

2005 Graphic Communication

Standard Grade – Foundation

Finalised Marking Instructions

These Marking Instructions have been prepared by Examination Teams for use by SQA Appointed Markers when marking External Course Assessments.

2005 Graphic Communication

Standard Grade – Foundation

1. (a) (i) Mouse/Keyboard
 (ii) Scanner **KI 2**
- (b) (i) Word Processing/DTP
 (ii) DTP
 (iii) Paint/Rendering
 (iv) CAD **KI 4**

Total KI 6

2. (a)

Centre	4
Hidden	3
Cutting plane	2
Dimension	5
Hatching	6
Outline	1

KI 6

- (b) Section, Sectional Elevation, Sectional End Elevation, Cross Section **KI 1**
- (c) Oblique **KI 1**
- (d) Any two other pictorials ie Isometric/Planometric/Perspective (any type) **KI 2**

Total KI 10

3. (a)

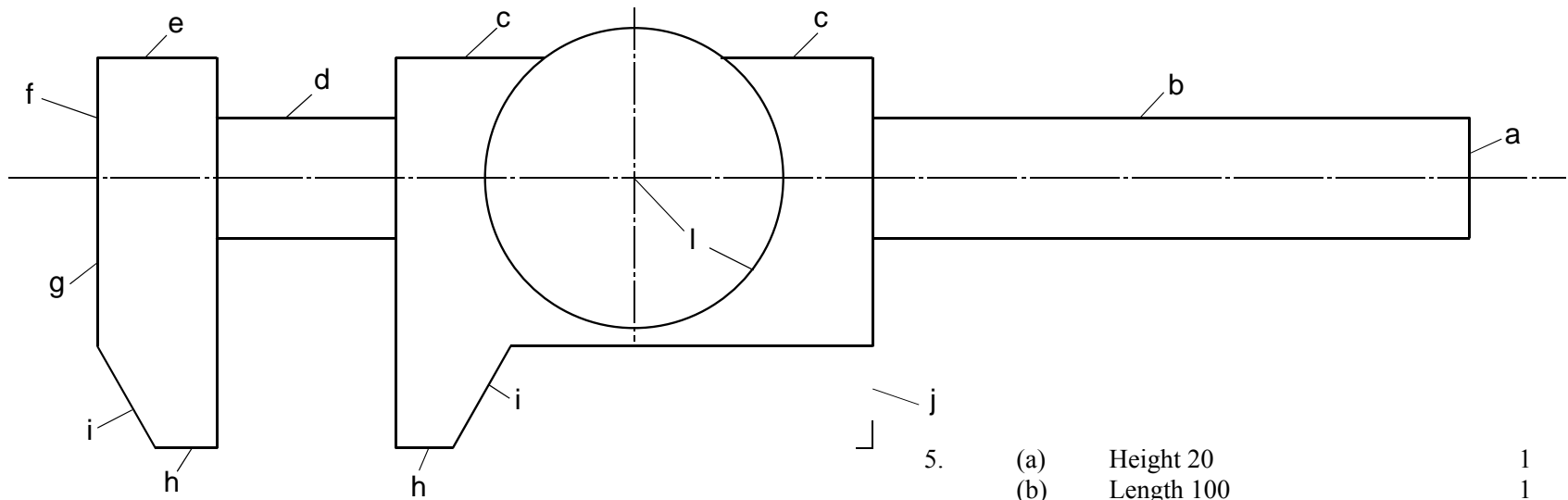
	Advantage	Disadvantage
Expensive new software would need to be purchased		✓
Designs could be produced faster	✓	
Changes could be easier to make	✓	
Costs for staff training would be higher		✓
Storage of designs would take less space	✓	
New hardware costs would be expensive		✓
System could be hacked		✓

KI 7

- (b) In case your work is lost, or any sensible answer **KI 1**

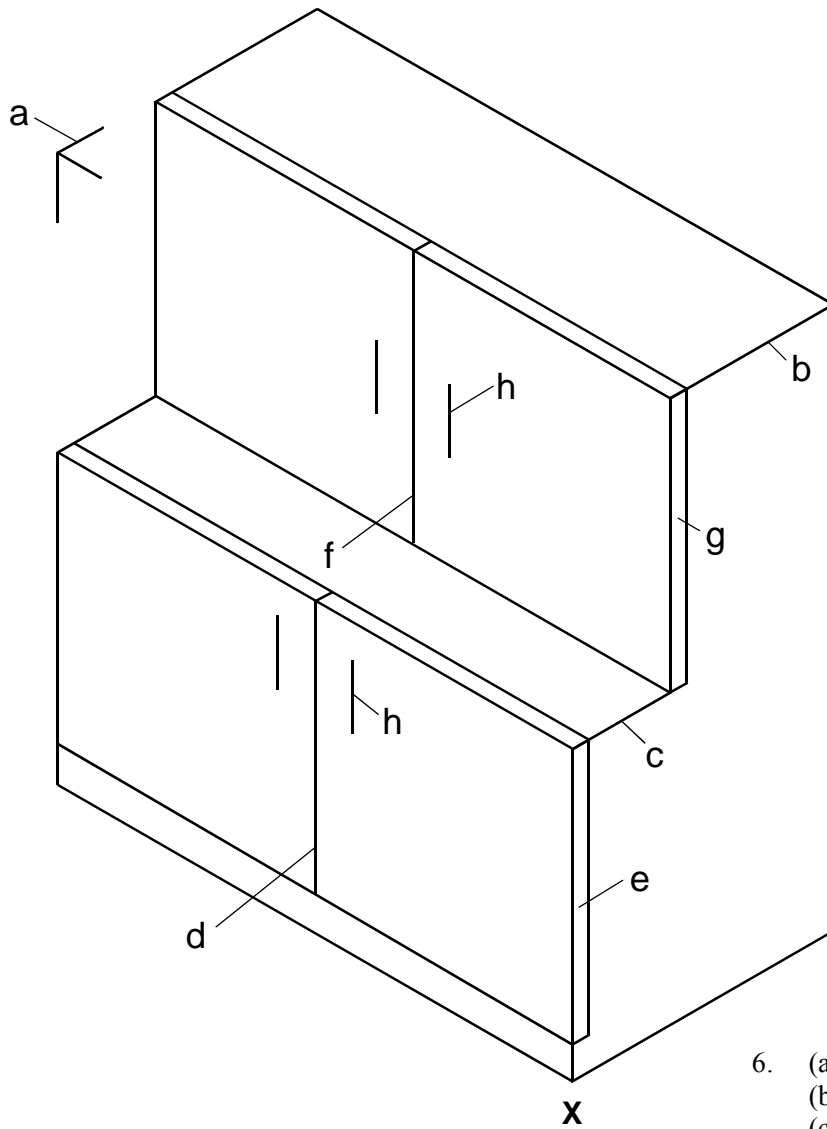
Total KI 8

4. (a)	December	KI 1
(b)	May	KI 1
(c)	June	KI 1
(d)	2 or July, August	KI 1
(e)	October	KI 1
(f)	December	KI 1
		Total KI 6



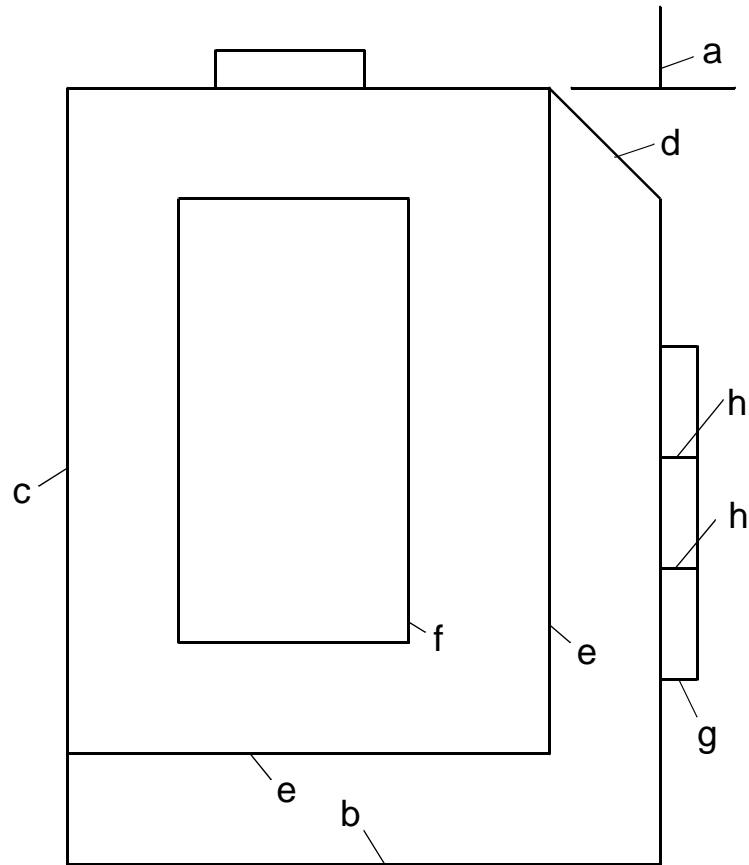
- 5.
- | | | |
|-----|---------------------------------|---|
| (a) | Height 20 | 1 |
| (b) | Length 100 | 1 |
| (c) | Length 80 (40 + 40) | 1 |
| (d) | Length 30 | 1 |
| (e) | Length 20 | 1 |
| (f) | Height 20 | 1 |
| (g) | Height 45 | 1 |
| (h) | Length 10 | 1 |
| (i) | Angled Lines 60° | 1 |
| (j) | Height 17 (15 ok) | 1 |
| (k) | Length 10 | 1 |
| (l) | Circle \varnothing + position | 1 |

Total DA 12



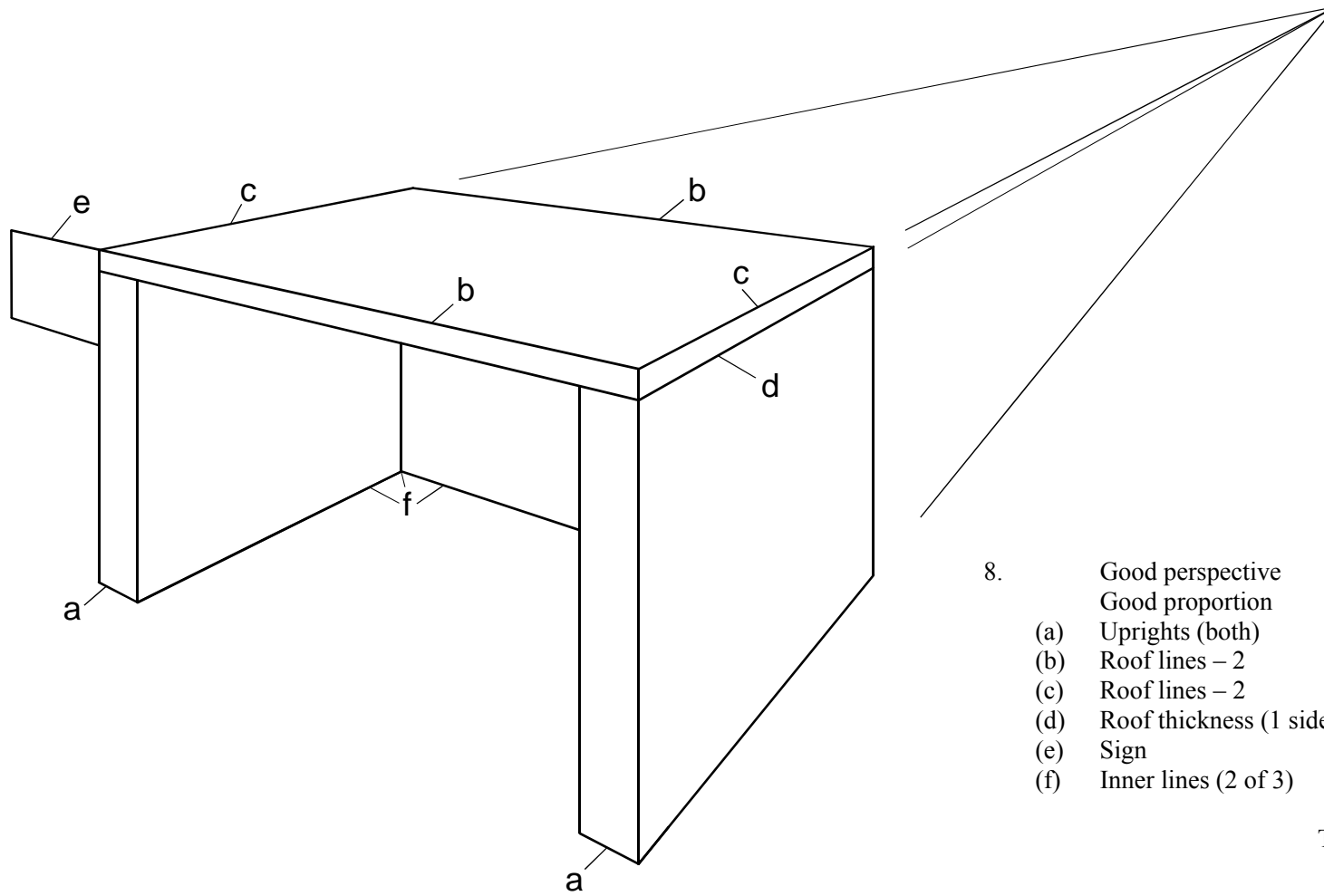
6. (a) iso crate outline l, b, h 3
 (b) Width of top 25 – 22 1
 (c) Width shown (both lines) 1
 (d) Doors shown (equal size) 1
 (e) Door thickness shown (end) 1
 (f) Doors shown (equal size) 1
 (g) Door thickness shown (end) 1
 (h) Handles shown (2 needed) 1

Total DA 10

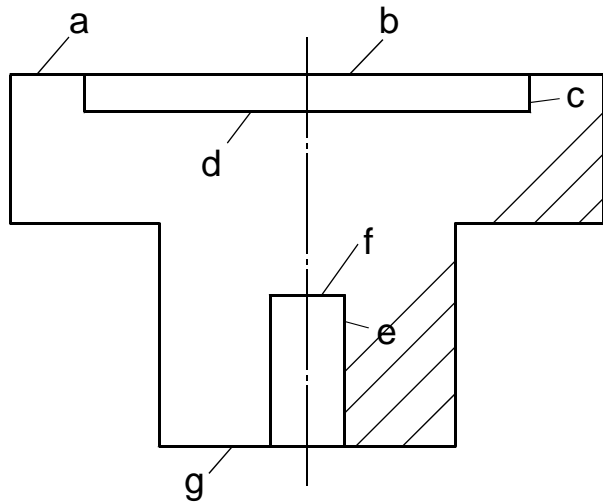


7. (a) Button (2 of L, B, position) 1
 (b) Length 80 1
 (c) Height 105 1
 (d) Slope 1
 (e) Lines (height 15 needed) 1
 (f) Rect. Position 1
 Size (both required) 1
 (g) Rect. Position 1
 Size (both required) 1
 (h) Lines (both) 1

Total DA 10



8.	Good perspective	1
	Good proportion	1
(a)	Uprights (both)	1
(b)	Roof lines – 2	1
(c)	Roof lines – 2	1
(d)	Roof thickness (1 side)	1
(e)	Sign	1
(f)	Inner lines (2 of 3)	1
	Total DA	8



9. (a) Diameter 80 1
 (b) Line shown (only if recess) 1
 (c) Line height 5 (full or broken) 1
 (d) Line (full or broken) 1
 (e) Line height 20 (full or broken) 1
 (f) Diameter 10 (full or broken) 1
 (g) Diameter 40 1
 (h) Hatching shown 1
 (i) Correct area hatched 1
 (j) Full lines shown (c, d, e and f) 1

Total DA 10

[END OF MARKING INSTRUCTIONS]