

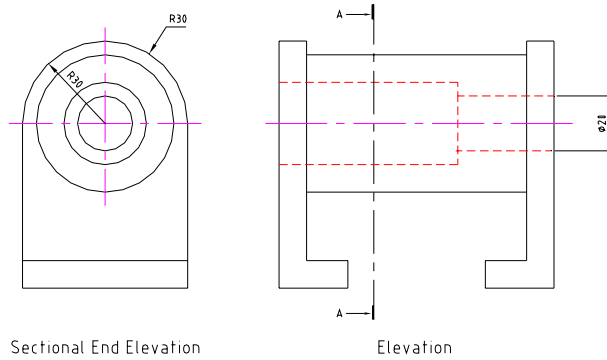
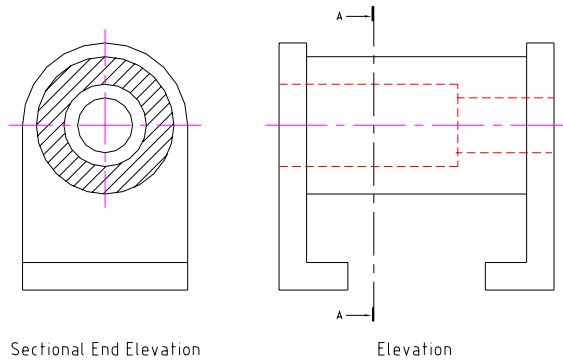
2005 Graphic Communication

Intermediate 2

Finalised Marking Instructions

These Marking Instructions have been prepared by Examination Teams for use by SQA Appointed Markers when marking External Course Assessments.

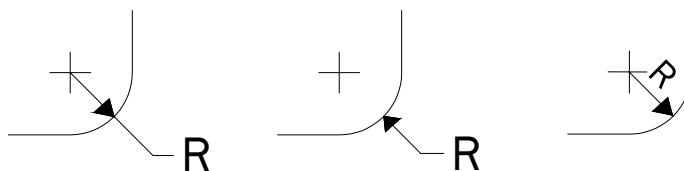
Question 1



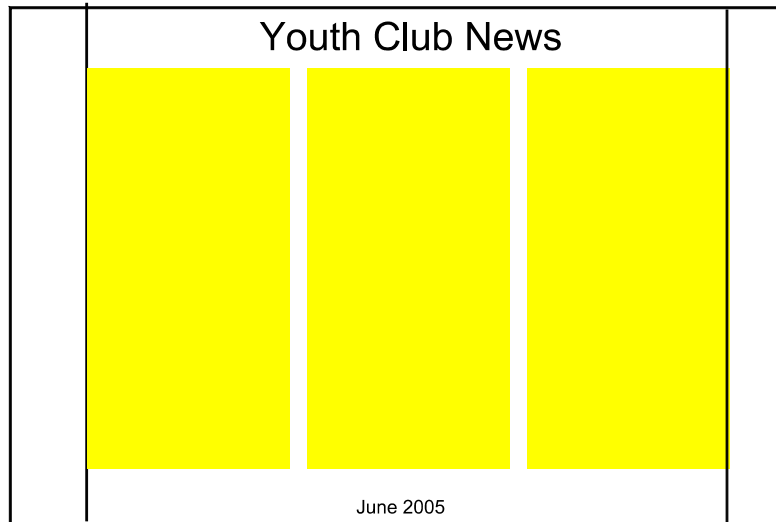
- a) i Three centre lines, as shown above, @ 1 **3 marks**
 ii Hatched area, as shown above **1 mark**
- b) i Diameter of smallest hole shown correctly (2 out of the 3 components – ½ mark) **1 mark**
 ii Radius of arc shown correctly (2 out of the 3 components – ½ mark) **1 mark**

Total 6 marks

NB Dimensioning components are: leader lines, dimension line with arrows and position of text.



Question 2



A good quality sketch to approximate scale showing the features listed below.

- | | | |
|-----------|--|---------------|
| a) | Landscape page orientation | 1 mark |
| b) | Left hand margin clearly shown | 1 mark |
| c) | Right hand margin clearly shown
(If margin is the same size as margin c , 0 marks) | 1 mark |
| d) | Header (Must be between margins and out with columns) | 1 mark |
| e) | Footer (Must be between margins and out with columns) | 1 mark |
| f) | 3 columns | 1 mark |
| g) | 2 gutters | 1 mark |

Total 7 marks

Question 3

- | | |
|---|--------|
| a) Fillet | 1 mark |
| b) Rectangular Array, Box Array, Array, Pattern | 1 mark |
| c) Rotate | 1 mark |
| d) Hatch | 1 mark |

Total 4 marks

Question 4

- | | |
|------------------------------------|--------|
| a) Sink, Basin | 1 mark |
| b) Bath | 1 mark |
| c) Shower | 1 mark |
| d) Light, Lamp (No marks for bulb) | 1 mark |
| e) Switch | 1 mark |
| f) Door | 1 mark |

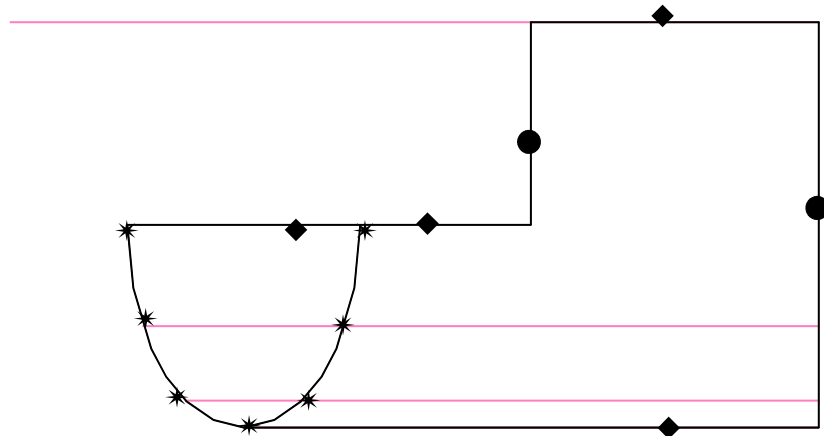
Total 6 marks

Notes for drawing questions:

- Tolerances for all drawings +/- 1mm
- When marking drawings, all markers must operate the “follow-on rule” and ensure that candidates are **not** penalised twice.
- Marks should be entered in the appropriate place and no other comments added to the candidates scripts.

Half marks should not be rounded up for each question, but when adding up the marks on the front cover, if the total mark has a half mark, this should be rounded up.

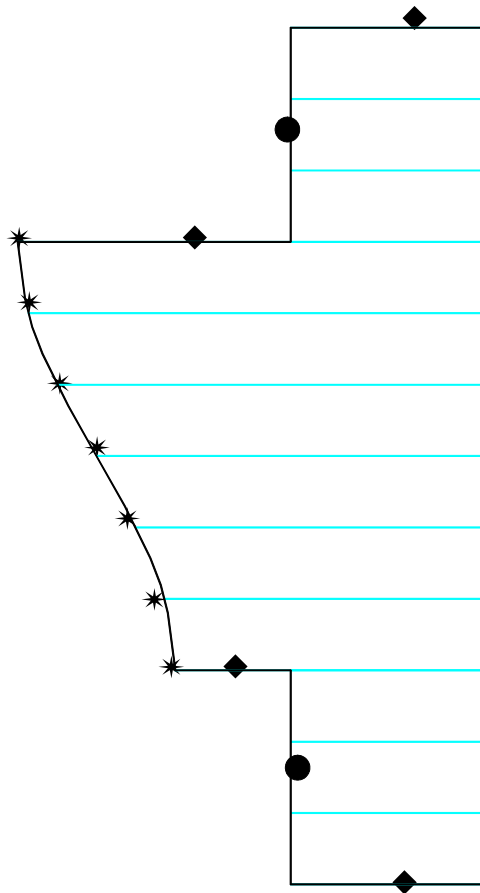
Question 5



Elevation

- a) 2 lines marked ● **1 mark**
 1 line $\frac{1}{2}$ mark
- b) 4 lines marked ◆ **1 mark**
 2 - 3 lines $\frac{1}{2}$ mark
- c) Points on curve marked * **2 marks**
 5 - 7 points **2 marks**
 2 - 4 points **1 mark**
- d) Quality of curve **1 mark**
 Good quality curve **1 mark**
 Poor quality curve $\frac{1}{2}$ mark

Question 5 (continued)

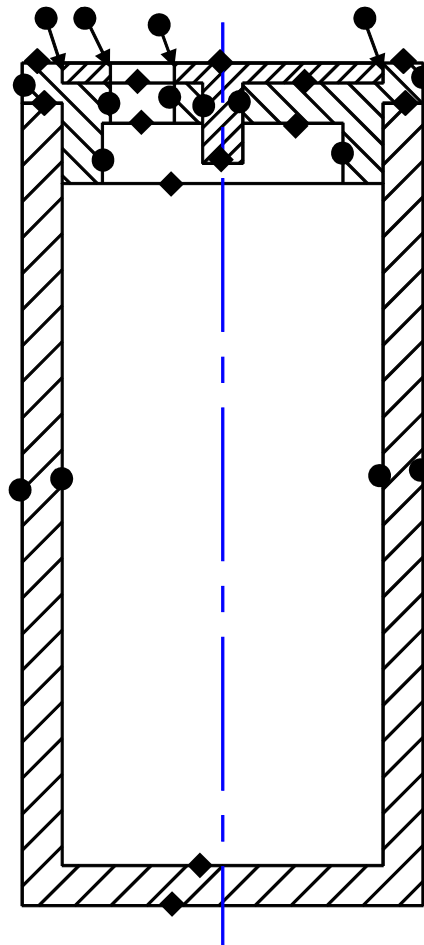


Development

- e) 12 evenly spaced generators **1 mark**
- f) Development opened correctly along seam A/A **½ mark**
- g) 4 lines marked **◆** **1½ marks**
 3 lines 1 mark
 2 lines ½ mark
- h) 2 lines marked **●** **1 mark**
 1 line ½ mark
- i) 7 Points on curve marked **★** **2 marks**
 6 – 7 points 2 marks
 4 – 5 points 1 mark
 1 – 3 points ½ mark
- j) Quality of curve **1 mark**
 Good quality curve 1 mark
 Poor quality curve ½ mark

Total 12 marks

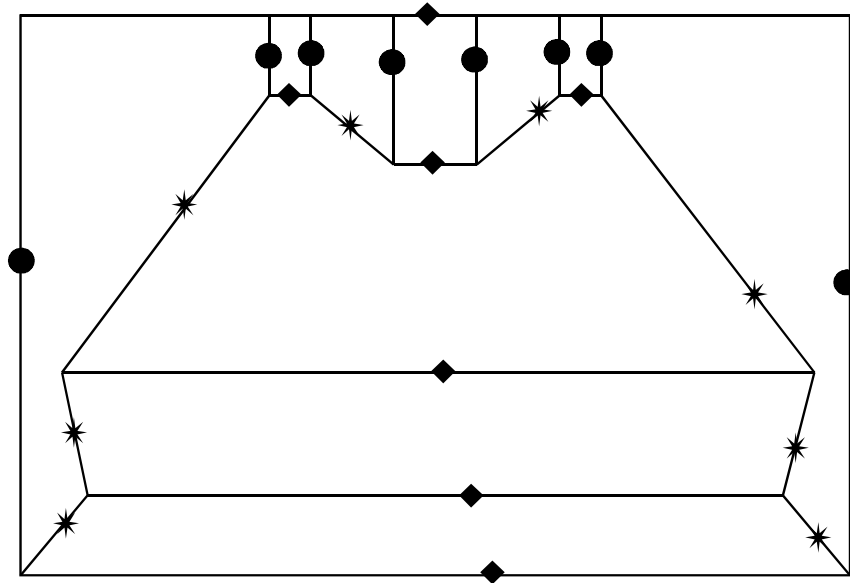
Question 6



- a) 13 Horizontal lines marked 2½ marks
 11-13 2½ marks
 8-10 2 marks
 5-7 1½ marks
 3-4 1 mark
 2 ½ mark
- b) 16 Vertical lines marked 3 marks
 14-16 3 marks
 11-13 2½ marks
 8-10 2 marks
 5-7 1½ marks
 3-4 1 mark
 2 ½ mark
- c) 3 parts treated correctly for Hatching 1½ marks
 3 parts @ ½ mark
- d) 45° angle used ½ mark
 e) Differentiation between sectioned surfaces ½ mark
 f) 3 parts assembled correctly 2 marks
 (2 parts assembled correctly – 1 mark)

Total 10 marks

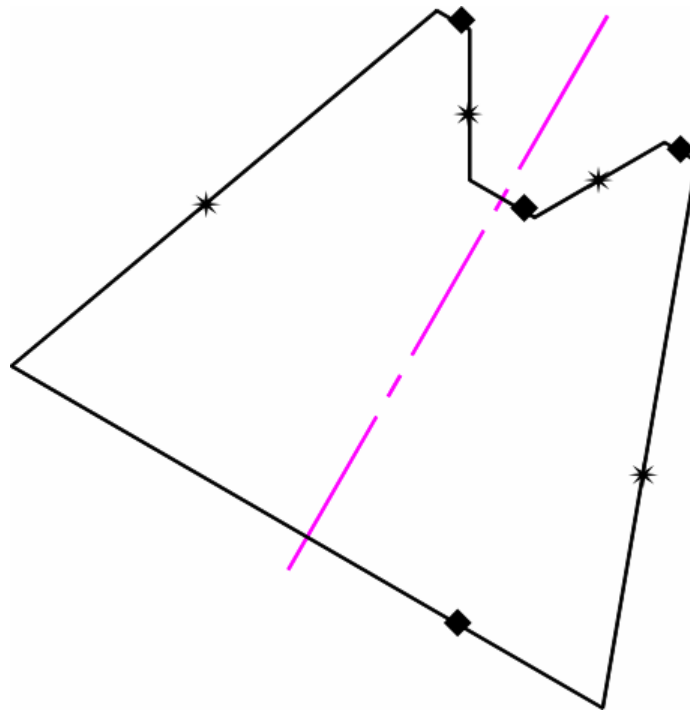
Question 8



Plan

- a) 8 vertical lines marked ● **3 marks**
- 7 – 8 lines **3 marks**
- 4 – 6 lines **2 marks**
- 2 – 3 lines **1 mark**
-
- b) 7 horizontal lines marked ◆ **3 marks**
- 6 – 7 lines **3 marks**
- 4 – 5 lines **2 marks**
- 2 – 3 lines **1 mark**
-
- c) 8 sloping lines marked * **3 marks**
- 7 – 8 lines **3 marks**
- 4 – 6 lines **2 marks**
- 2 – 3 lines **1 mark**

Question 8 (continued)



True Shape

- d)** 4 lines, at 30° , marked ◆ **2 marks**
3 – 4 lines **2 marks**
1 – 2 lines **1 mark**

- e)** 4 sloping lines marked * **2 marks**
3 – 4 lines **2 marks**
1 – 2 lines **1 mark**

Total 13 marks

[END OF MARKING INSTRUCTIONS]