

**2006 Graphic Communication**

**Standard Grade – Foundation**

**Finalised Marking Instructions**

© The Scottish Qualifications Authority 2006

The information in this publication may be reproduced to support SQA qualifications only on a non-commercial basis. If it is to be used for any other purposes written permission must be obtained from the Assessment Materials Team, Dalkeith.

Where the publication includes materials from sources other than SQA (secondary copyright), this material should only be reproduced for the purposes of examination or assessment. If it needs to be reproduced for any other purpose it is the centre's responsibility to obtain the necessary copyright clearance. SQA's Assessment Materials Team at Dalkeith may be able to direct you to the secondary sources.

These Marking Instructions have been prepared by Examination Teams for use by SQA Appointed Markers when marking External Course Assessments. This publication must not be reproduced for commercial or trade purposes.

**Foundation**

- 1 (a) Keyboard
- (b) Scanner
- (c) Floppy disc/ CD ROM
- (d) Printer
- (e) Mouse/ Keyboard
- (f) Plotter/ Printer

**TOTAL KI 6**

- 2 (a) P Chain line thick at ends/ Cutting plane/ Section line
- Q Continuous thick/ Visible outlines/ edges/ Outline
- R Dashed thin/ Hidden outlines and edges
- S Hatching line

KI 4

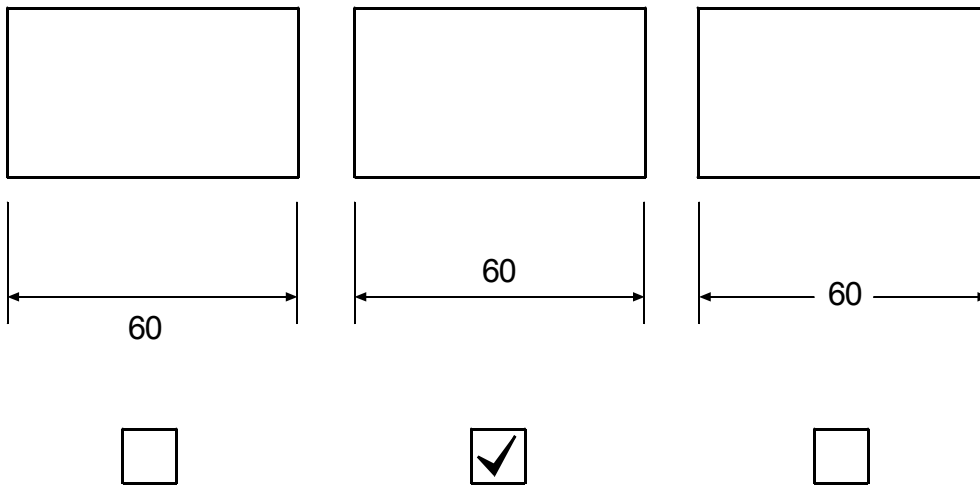
(b) Sectional Elevation/ Section

KI 1

(c) 45 Deg

KI 1

(d)



KI 1

**TOTAL KI 7**

- 3 (a) Blue, Blue-green, Green, Yellow-green, Yellow
- (b) Orange, Red-orange, Red-violet, Violet
- (c) White
- (d) (i) Yellow                      Blue
- (ii) Green                      Orange
- (iii) Blue-violet              Yellow-orange

KI 1

KI 1

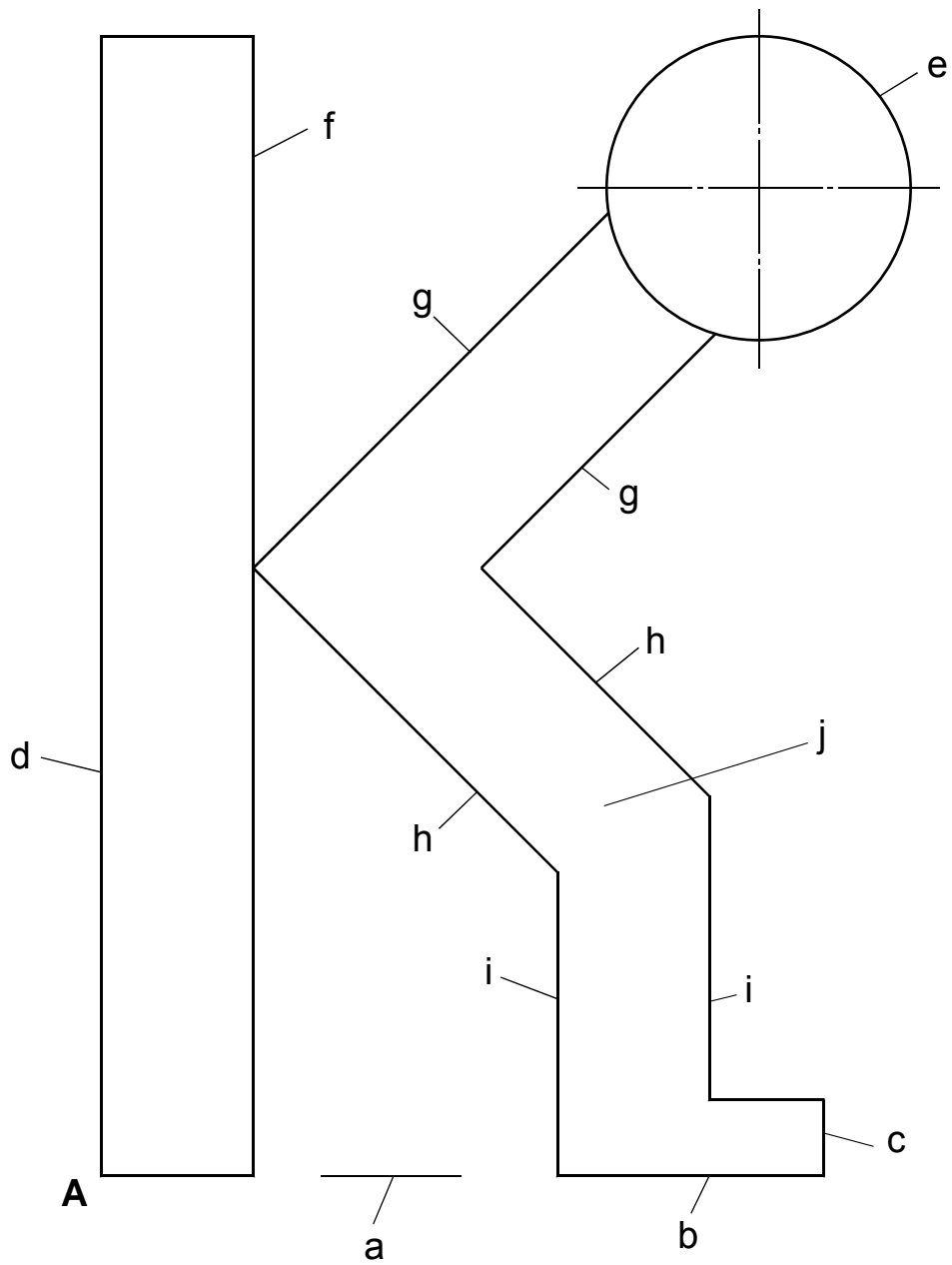
KI 1

KI 6

**TOTAL KI 9**

4	<b>Factors</b>	<b>Advantage</b>	<b>Disadvantage</b>
	The speed with which a designer produces drawings.	✓	
	The speed with which a designer can change mistakes.	✓	
	The cost of buying new computers.		✓
	The need to train staff in the use of computers.		✓
	A library of commonly used parts.	✓	
	Storage of drawings takes up less space.	✓	
	Possible data loss.		✓
	Greater accuracy of drawing.	✓	

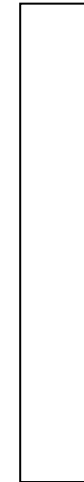
**TOTAL KI 8**

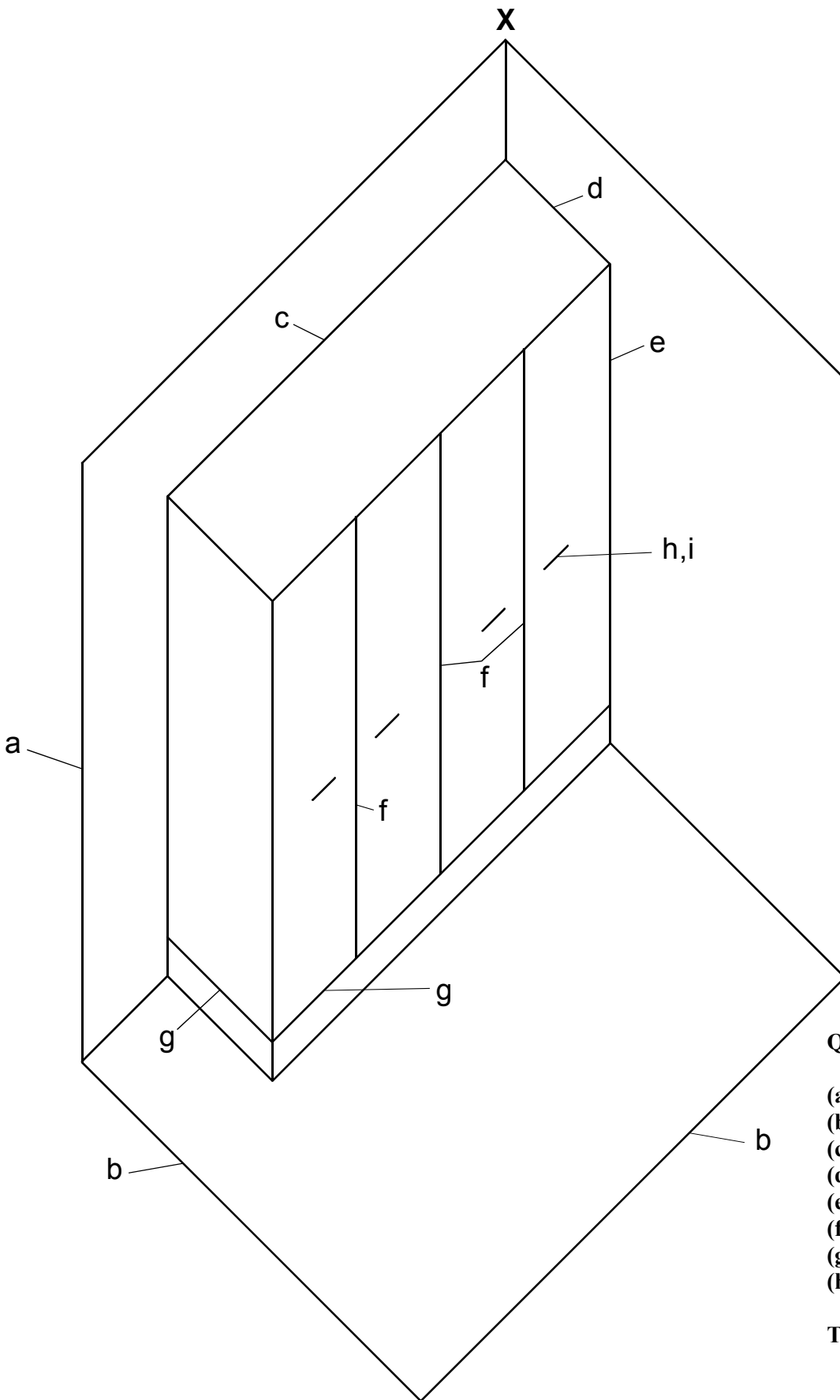


**Question 5**

- (a) Length 40            1
- (b) Length 35            1
- (c) Height 10            1
- (d) Height 150           1
- (e) Dia. 40               1
- (f) Height 70             1
- (g) Lines (correct angle) 1
- (h) Lines (correct angle) 1
- (i) Lines                    1
- (j) Width 20              1

**Total DA 10**

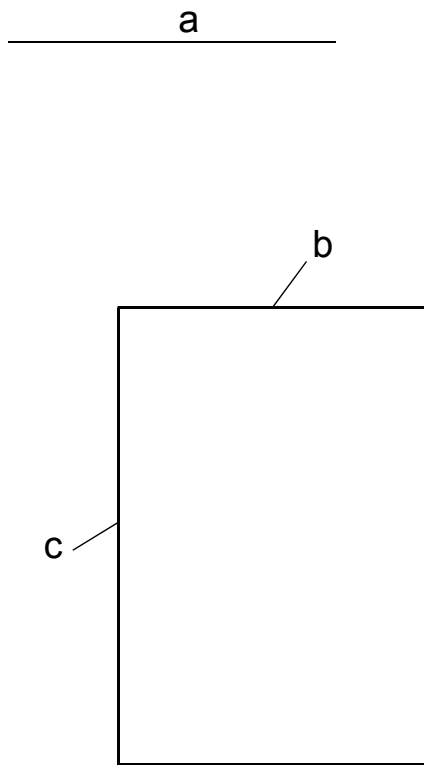




**Question 6**

- (a) Wall height 1
- (b) Floor shown 1
- (c) Length 1
- (d) Width 1
- (e) Height 1
- (f) Doors 3 lines + size 2
- (g) Plinth 2
- (h) Handles shown 1

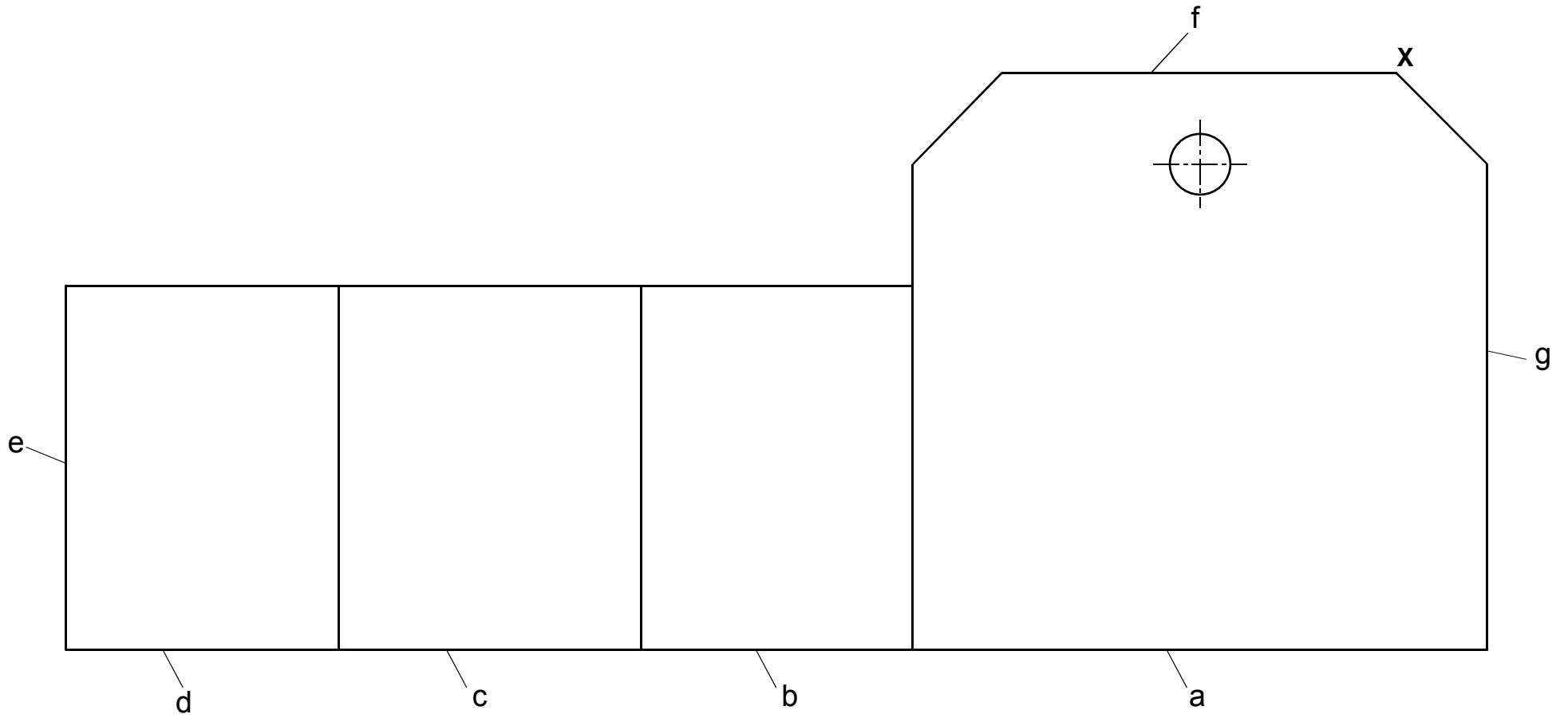
**Total DA 10**



**Question 7**  
**End elevation**

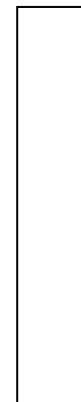
- (a) Correct projection 1**
- (b) Correct width 1**
- (c) Correct height 1**

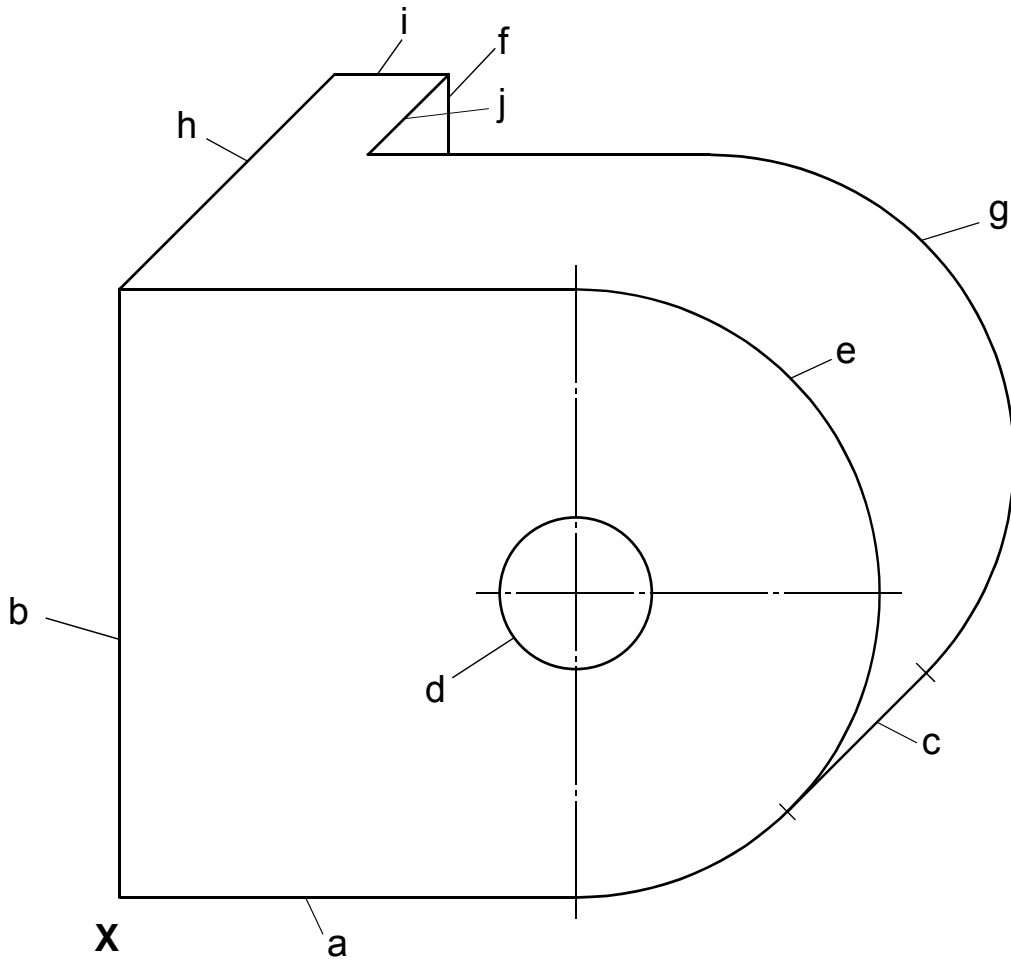




**Question 7**

- |                       |                 |   |
|-----------------------|-----------------|---|
| (a) Length 95         | } Correct order | 1 |
| (b) Length 45         |                 | 1 |
| (c) Length 50         |                 | 1 |
| (d) Length 45         |                 | 1 |
| (e) Height 60         |                 | 1 |
| (f) Length 65 + angle |                 | 1 |
| (g) Height 80         |                 | 1 |



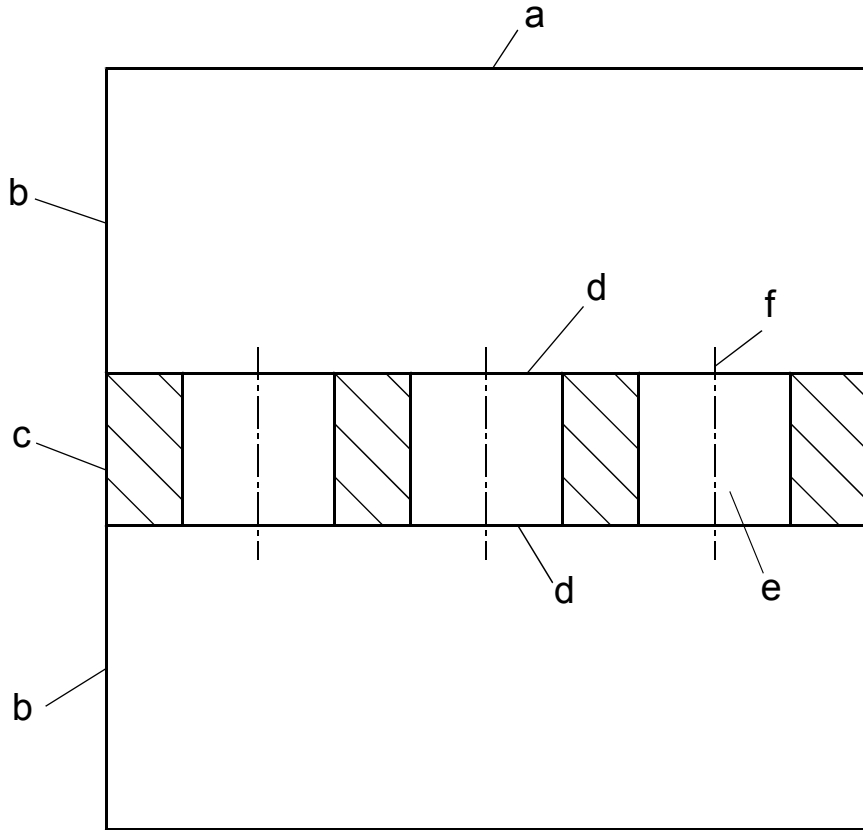


**Question 8**

- |                         |          |
|-------------------------|----------|
| <b>(a) Length 60</b>    | <b>1</b> |
| <b>(b) Height 80</b>    | <b>1</b> |
| <b>(c) Line</b>         | <b>1</b> |
| <b>(d) Circle</b>       | <b>1</b> |
| <b>(e) Radius front</b> | <b>1</b> |
| <b>(f) Line</b>         | <b>1</b> |
| <b>(g) Radius back</b>  | <b>1</b> |
| <b>(h) Depth line</b>   | <b>1</b> |
| <b>(i) Length 15</b>    | <b>1</b> |
| <b>(j) Line 15</b>      | <b>1</b> |

**Total DA 10**

**If not halved, marks lost at c, h and j.**



**Question 9**

- (a) Width 1
- (b) Height 1
- (c) Height 1
- (d) Horizontal lines (full/broken) 1
- (e) 3 holes shown 1
- (f) Hole diameters correct 1
- (g) Gap spacing correct 1
- (h) Full lines shown throughout 1
- (i) Hatching shown 1
- (j) Correct area hatched 1

**Total DA 10**

[END OF MARKING INSTRUCTIONS]