



2007 Graphic Communication

Intermediate 2

Finalised Marking Instructions

© Scottish Qualifications Authority 2007

The information in this publication may be reproduced to support SQA qualifications only on a non-commercial basis. If it is to be used for any other purposes written permission must be obtained from the Assessment Materials Team, Dalkeith.

Where the publication includes materials from sources other than SQA (secondary copyright), this material should only be reproduced for the purposes of examination or assessment. If it needs to be reproduced for any other purpose it is the centre's responsibility to obtain the necessary copyright clearance. SQA's Assessment Materials Team at Dalkeith may be able to direct you to the secondary sources.

These Marking Instructions have been prepared by Examination Teams for use by SQA Appointed Markers when marking External Course Assessments. This publication must not be reproduced for commercial or trade purposes.

Question 1

- a. Location Plan
- b. Location of plots, streets, roads, trees, shrubs, drainage, boundaries, buildings
- c. 1:1000, 1:1250
- d. North

1 mark each

4 marks

Question 2

- a. Uniformity between offices. Drawings can be understood right across Britain. Symbols such as doors, windows, etc are not mistaken in different offices. **2 marks**
- b. USB key, memory stick, flash drive, CD/DVD, Zip disk, floppy disk, external hard drive. **1 mark**
- c. Drawings can be exchanged between offices electronically.
Drawings can be edited or changed easily.
Drawings can be built up from existing ones to create new ones.
Drawings can be created quicker using libraries of common parts/symbols.
Less storage space required over paper drawings. **3 marks**

Total 6 marks

Question 3

- a.
 - i oblique **1 mark**
 - ii isometric **1 mark**
 - iii 2pt perspective **1 mark**
 - iv 1pt perspective **1 mark**
- b. 45 degrees **1 mark**
- c. 30 degrees **1 mark**

Total 6 marks

Question 4

- a. **Copy and Paste** **2 marks**
- b. Gradient, linear fill **1 mark**
- c. Group **1 mark**
- d. DTP/Desktop Publishing **1 mark**
- e. Computer could crash losing unsaved work. **1 mark**

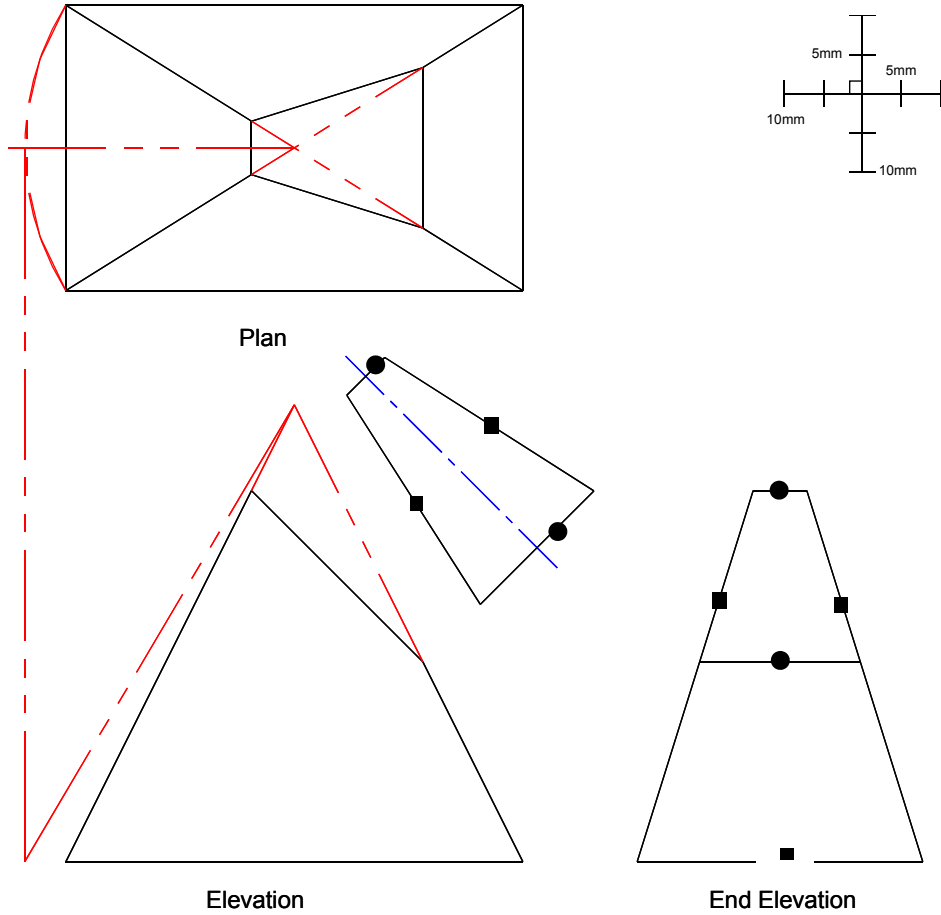
Total 6 marks

Notes for drawing questions:

- Tolerances for all drawings +/- 1mm
- When marking drawings, all markers must operate the “follow-on rule” and ensure that candidates are **not** penalised twice.
- Marks should be entered in the appropriate place and no other comments added to the candidates scripts.

Half marks should not be rounded up for each question, but when adding up the marks on the front cover, if the total mark has a half mark, this should be rounded up.

Question 5



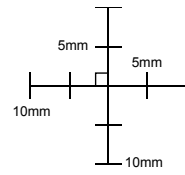
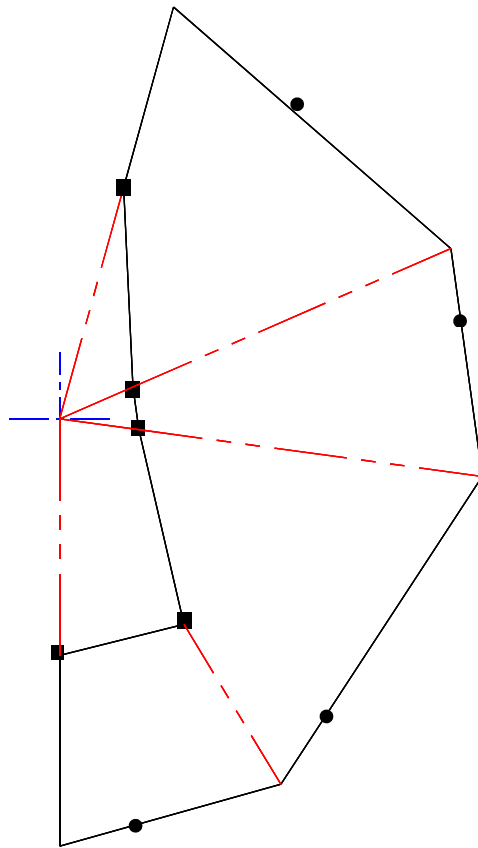
End Elevation

- a. Outline lines marked ■ **1 mark**
- b. 2 Horizontal lines marked ● **1 mark**
1 @ ½ mark each

True Shape

- c. 2 lines marked ● **1 mark**
2 1mark
1 ½ mark
- d. 2 lines marked ■ **1 mark**
2 1mark
1 ½ mark

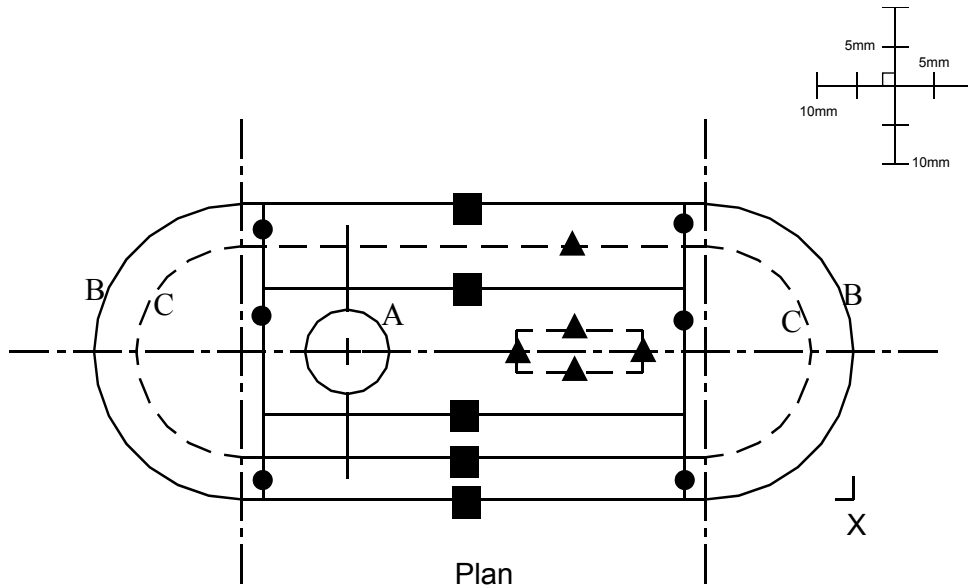
Development



- e. correct construction of true lengths **1 mark**
- f. True length used for arc **1 mark**
- g. 4 base lines marked ● **2 marks**
 3-4 2 marks
 1-2 1 mark
- h. 5 Heights marked ■ **1 mark**
 4-5 1 mark
 2-3 ½ mark
- i. 3 fold lines shown correctly **½ mark**
- j. open along seam x-x **½ mark**

Total 10 marks

Question 6



Plan

- a. 5 Horizontal lines marked ■ 1 mark
 4-5 1 mark
 2-3 ½ mark

- b. 6 Vertical lines marked ● 1 mark
 5-6 1 mark
 2-4 ½ mark

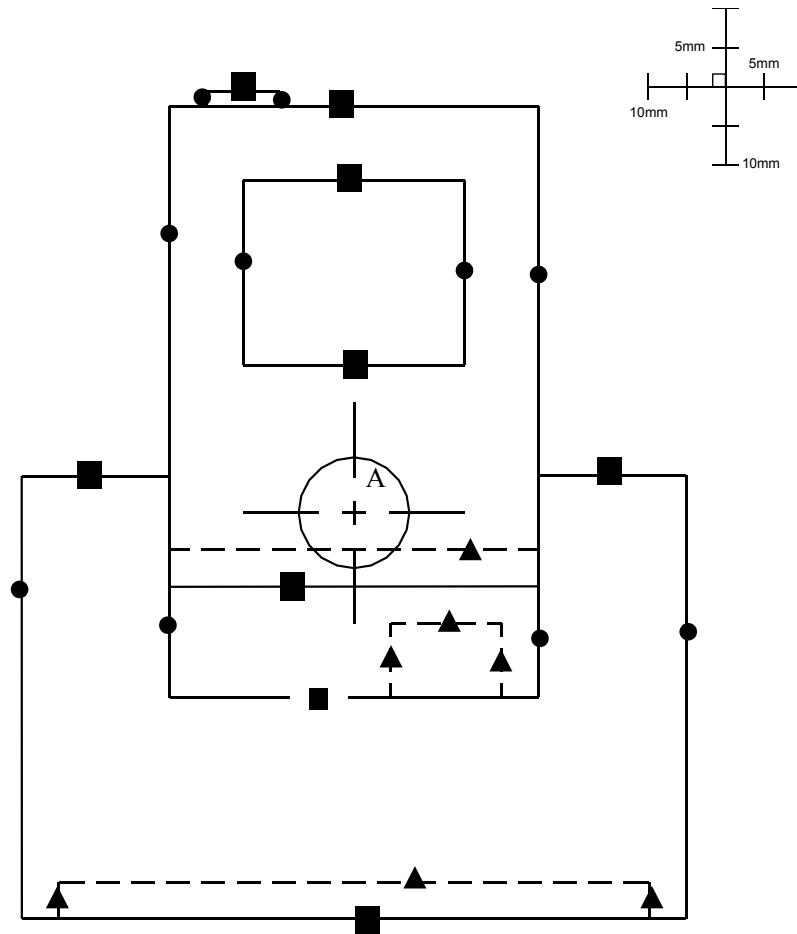
- c. 5 Hidden lines marked ▲ 1 mark
 4-5 1 mark
 2-3 ½ mark

- d. 1 circle drawn in position A ½ mark

- e. 2 semi circles B ½ mark

- f. 2 hidden semi circles C ½ mark

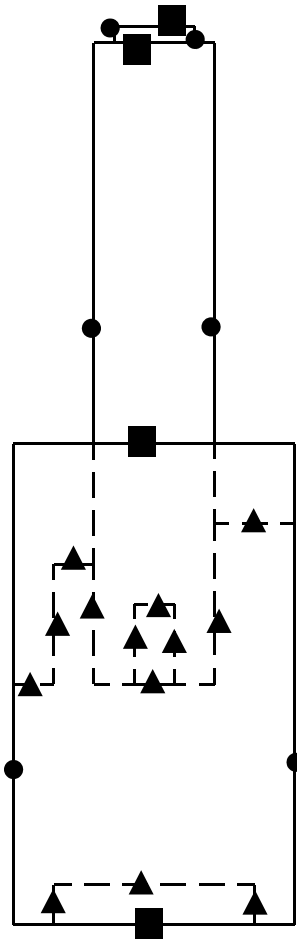
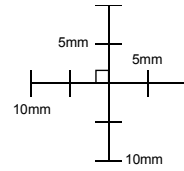
Elevation



Elevation

- g. 9 Horizontal lines marked **1 mark**
 7-9 lines 1 mark
 4-6 lines ½ mark
- h. 10 Vertical lines marked **1 mark**
 8-10 lines 1 mark
 4-7 lines ½ mark
- i. 7 hidden lines marked **1 mark**
 5-7 lines 1 mark
 3-4 lines ½ mark
- j. 1 circle marked A **½ mark**

End Elevation

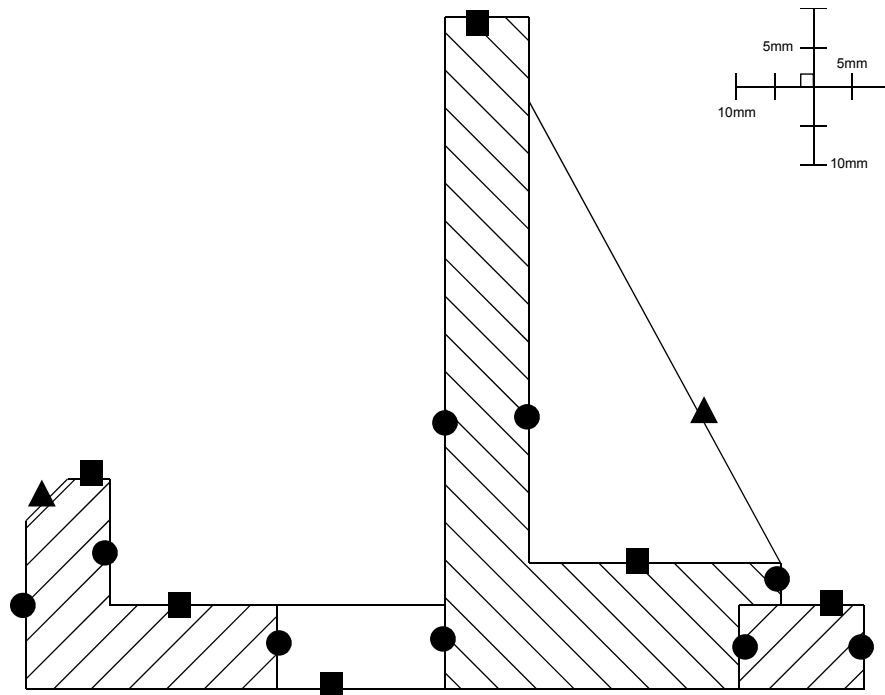


End Elevation

- k. 4 Horizontal lines marked ■ **½ mark**
 2-4 lines ½ mark
- l. 6 Vertical lines marked ● **1 mark**
 5-6 lines 1 mark
 2-4 lines ½ mark
- m. 13 Hidden lines marked ▲ **2 marks**
 11-13 lines 2 marks
 8-10 lines 1½ marks
 5-7 lines 1 mark
 2-4 lines ½ mark
- n. correct assembly shown in all views **½ mark**

Total 12 marks

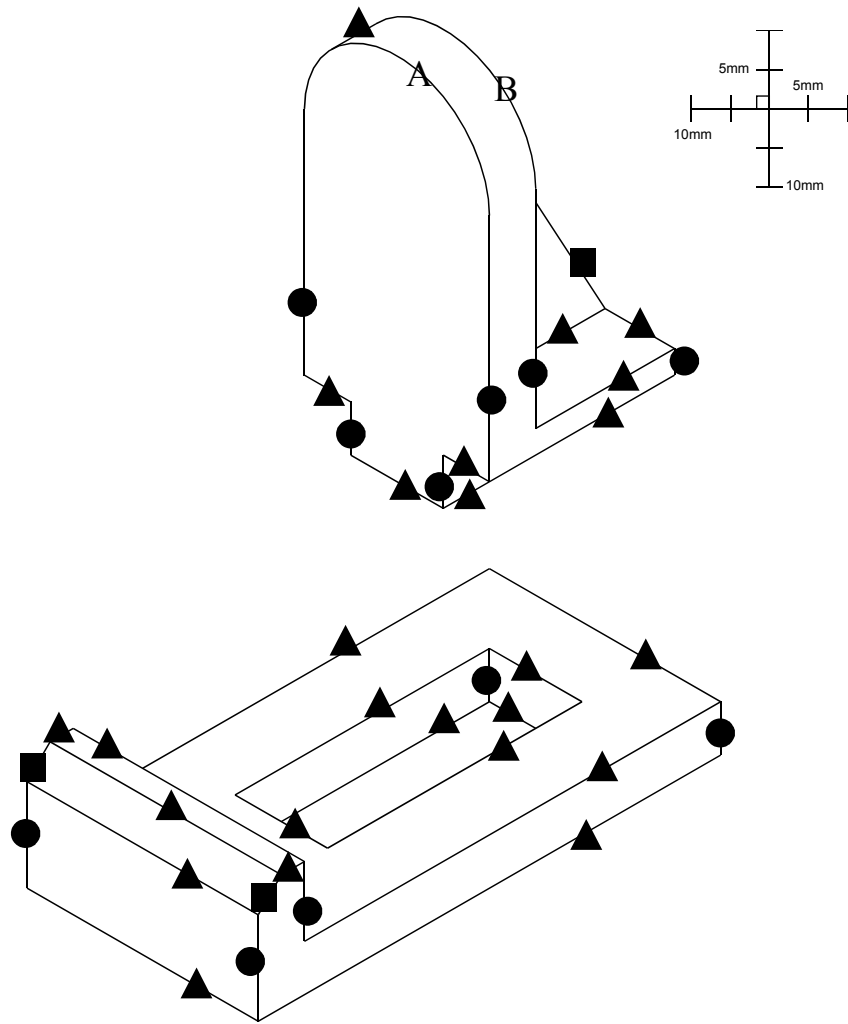
Question 7



Sectional Elevation

- | | | | |
|----|--|---|-----------------|
| a. | 6 Horizontal lines marked | ■ | 1 mark |
| | 5-6 lines | | 1 mark |
| | 2-4 lines | | ½ mark |
| b. | 9 Vertical lines marked | ● | 1 mark |
| | 6-9 lines | | 1 mark |
| | 2-5 lines | | ½ mark |
| c. | 2 sloping lines marked | ▲ | 1 mark |
| | ½ mark each | | |
| d. | Hatching | | 1½ marks |
| | 3 parts treated correctly for hatching | | ½ mark |
| | Hatching at 45° | | ½ mark |
| | Differentiation between parts | | ½ mark |

Isometric View



Base

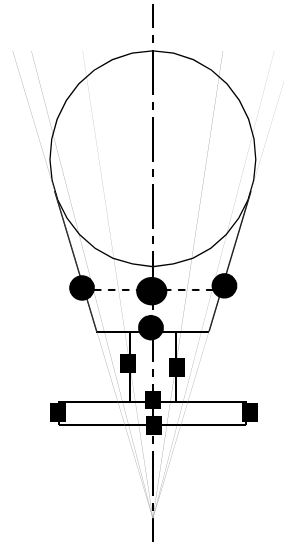
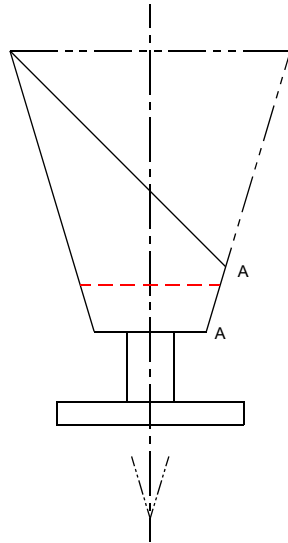
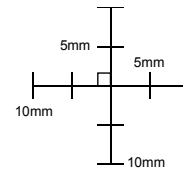
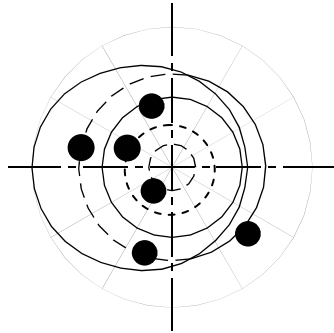
- | | | | |
|----|---------------------------|---|----------------|
| e. | 16 Isometric lines marked | ▲ | 2 marks |
| | 14-16 lines | | 2 marks |
| | 11-13 lines | | 1½ marks |
| | 8-10 lines | | 1 mark |
| | 5-7 lines | | ½ mark |
| f. | 5 Vertical lines marked | ● | 1 mark |
| | 4-5 lines | | 1 mark |
| | 2-3 lines | | ½ mark |
| g. | 2 chamfers marked | ■ | ½ mark |

Stand

- h. 9 Isometric lines marked ▲ **1½ marks**
8-9 lines 1½ marks
6-7 lines 1 mark
4-5 lines ½ mark
- i. 6 Vertical lines marked ● **1 mark**
5-6 lines 1 mark
3-4 lines ½ mark
- j. 1 sloping line marked ■ **½ mark**
- k. construction for isometric circle **½ mark**
- l. 7 points on semi circle A **1 mark**
5-7 points 1 mark
3-4 points ½ mark
- m. 5 points on semi circle B **½ mark**
4-5 points ½ mark
- n. exploded correctly **1 mark**
no overlap ½ mark
aligned correctly ½ mark

Total 14 marks

Question 8



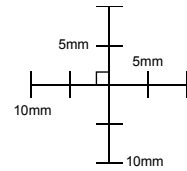
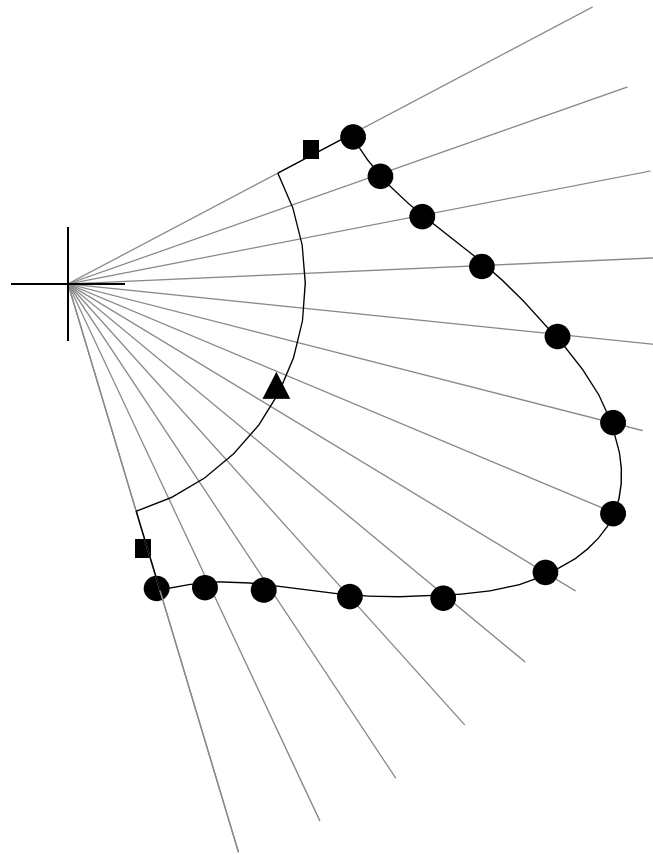
End Elevation

- a. 6 lines making up stand ■ ½ mark
 - b. construction outline of cone ½ mark
 - c. 4 lines that make up seat marked ● ½ mark
 - d. 12 points on ellipse 1 mark
- 9-12 1 mark
6-8 ½ mark

Plan

- e. 4 circles marked ● 2½ marks
- Stand - solid ½ mark
Stand - hidden ½ mark
Support - hidden ½ mark
Base of seat – solid ½ mark
 hidden ½ mark
- f. 12 points on ellipse 1 mark
- 9-12 1 mark
6-8 ½ mark

Development



- g. Correct radius (true length) used for arc **½ mark**
- h. 12 equal divisions **½ mark**
- i. Correct radius of circle ▲ **1 mark**
- j. 13 points on curve ● **2 marks**
 - 11-13 points 2 marks
 - 8-10 points 1½ marks
 - 5-7 points 1 mark
 - 2-4 points ½ mark
- k. 2 outlines marked ■ **½ mark**
- l. quality of curves **1 mark**
 - good 1 mark
 - fair ½ mark
- m. opened along seam A/A **½ mark**

Total 12 marks

[END OF MARKING INSTRUCTIONS]