



2007 Graphic Communication

Standard Grade – Foundation

Finalised Marking Instructions

© Scottish Qualifications Authority 2007

The information in this publication may be reproduced to support SQA qualifications only on a non-commercial basis. If it is to be used for any other purposes written permission must be obtained from the Assessment Materials Team, Dalkeith.

Where the publication includes materials from sources other than SQA (secondary copyright), this material should only be reproduced for the purposes of examination or assessment. If it needs to be reproduced for any other purpose it is the centre's responsibility to obtain the necessary copyright clearance. SQA's Assessment Materials Team at Dalkeith may be able to direct you to the secondary sources.

These Marking Instructions have been prepared by Examination Teams for use by SQA Appointed Markers when marking External Course Assessments. This publication must not be reproduced for commercial or trade purposes.

Foundation

1 (a)

Name	Input	Output	Storage
Keyboard	✓		
Printer		✓	
Scanner	✓		
Hard disc			✓

KI 4

(b) A paper copy/printout

KI 1

(c) In case the computer crashes/so that all data is not lost if you accidentally delete your work.

KI 1

TOTAL KI 6

2 (a)

Colour	Primary	Secondary	Tertiary
Red	✓		
Violet		✓	
Blue-Green			✓
Blue	✓		
Yellow-Orange			✓
Green		✓	

KI 6

(b) Green, Yellow-Green, Yellow-Orange, Orange

KI 2

(c) Blue, Blue-Violet, Violet, Red-Violet, Red

KI 2

TOTAL KI 10

3 (a) 2000

KI 1

(b) 1992

KI 1

(c) 1995

KI 1

(d) 1996

KI 1

(e) 1994

KI 1

(f) 3

KI 1

TOTAL KI 6

4 (a) Table of line types

Hatching	4
Dimension	5
Outline	1
Centre	6
Cutting plane	3
Hidden	2

KI 6

(b) Section/Sectional

KI 1

(c) Isometric

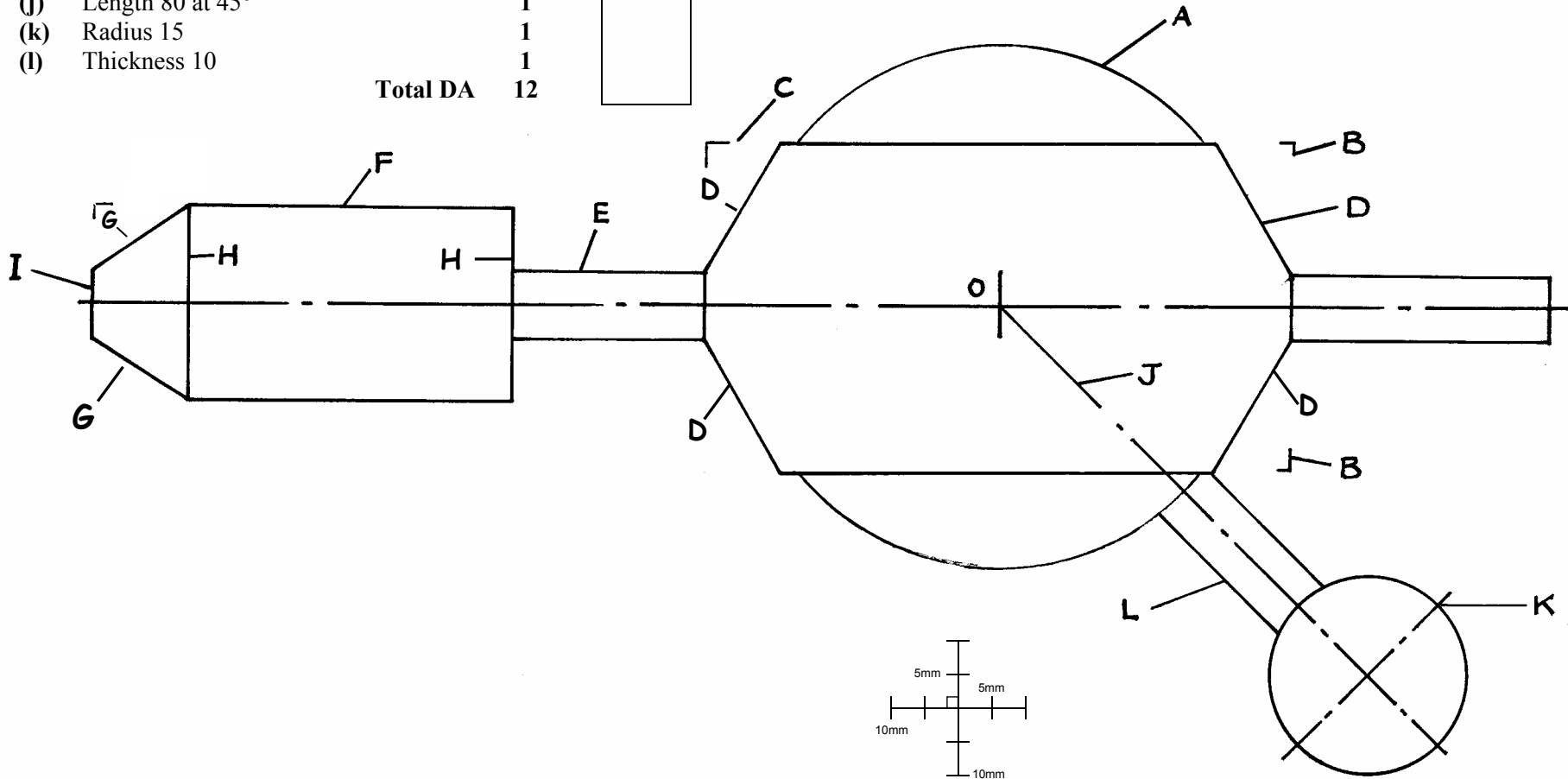
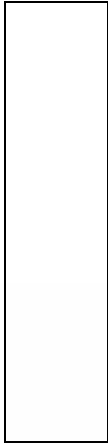
KI 1

TOTAL KI 8

Question 5

- (a) Radius 40 1
- (b) Heights 20 (above and below) 1
- (c) Length 90 1
- (d) Sloping lines (two from four) 1
- (e) Lines 30 long 1
- (f) Lines 50 long 1
- (g) Sloping lines 1
- (h) Lines 30 long (size and position) 1
- (i) Line 10 long (size and position) 1
- (j) Length 80 at 45° 1
- (k) Radius 15 1
- (l) Thickness 10 1

Total DA 12



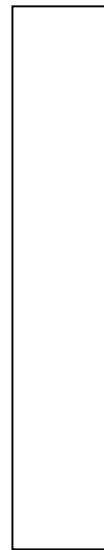
Question 6

Elevation

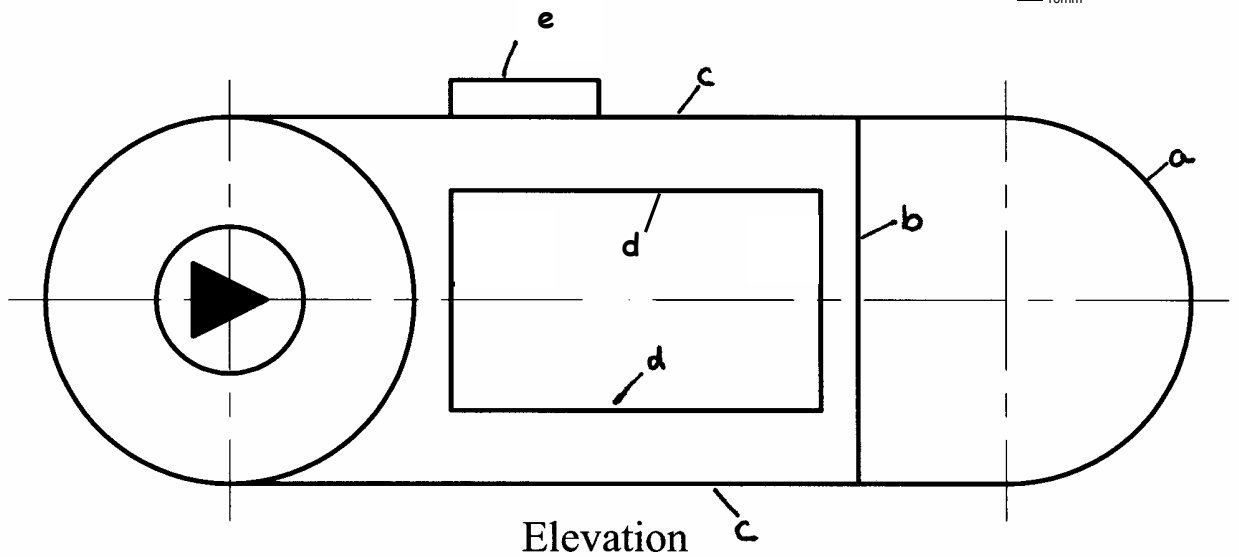
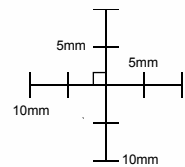
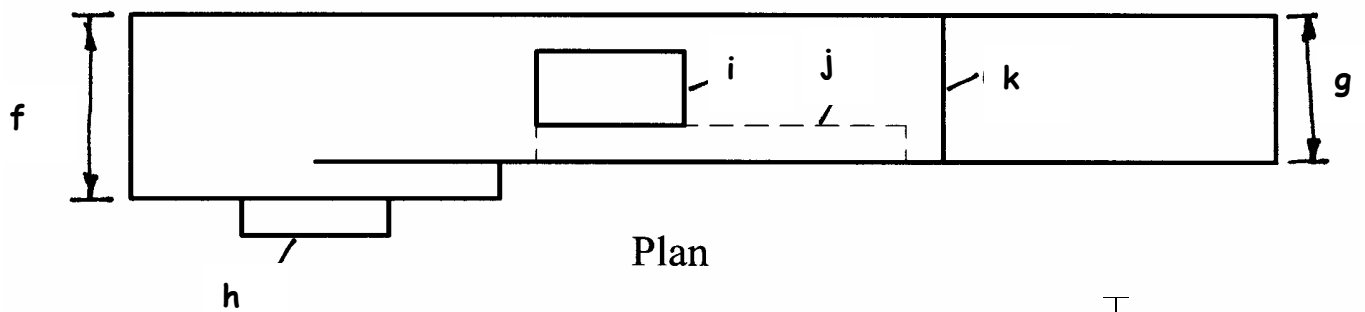
- (a) Semi-circle (R25) 1
- (b) Vertical line (correct position) 1
- (c) Lines (top and bottom) 1
- (d) Rectangle length and height 1
- (e) Button shown (l, h and pos – two of three) 1

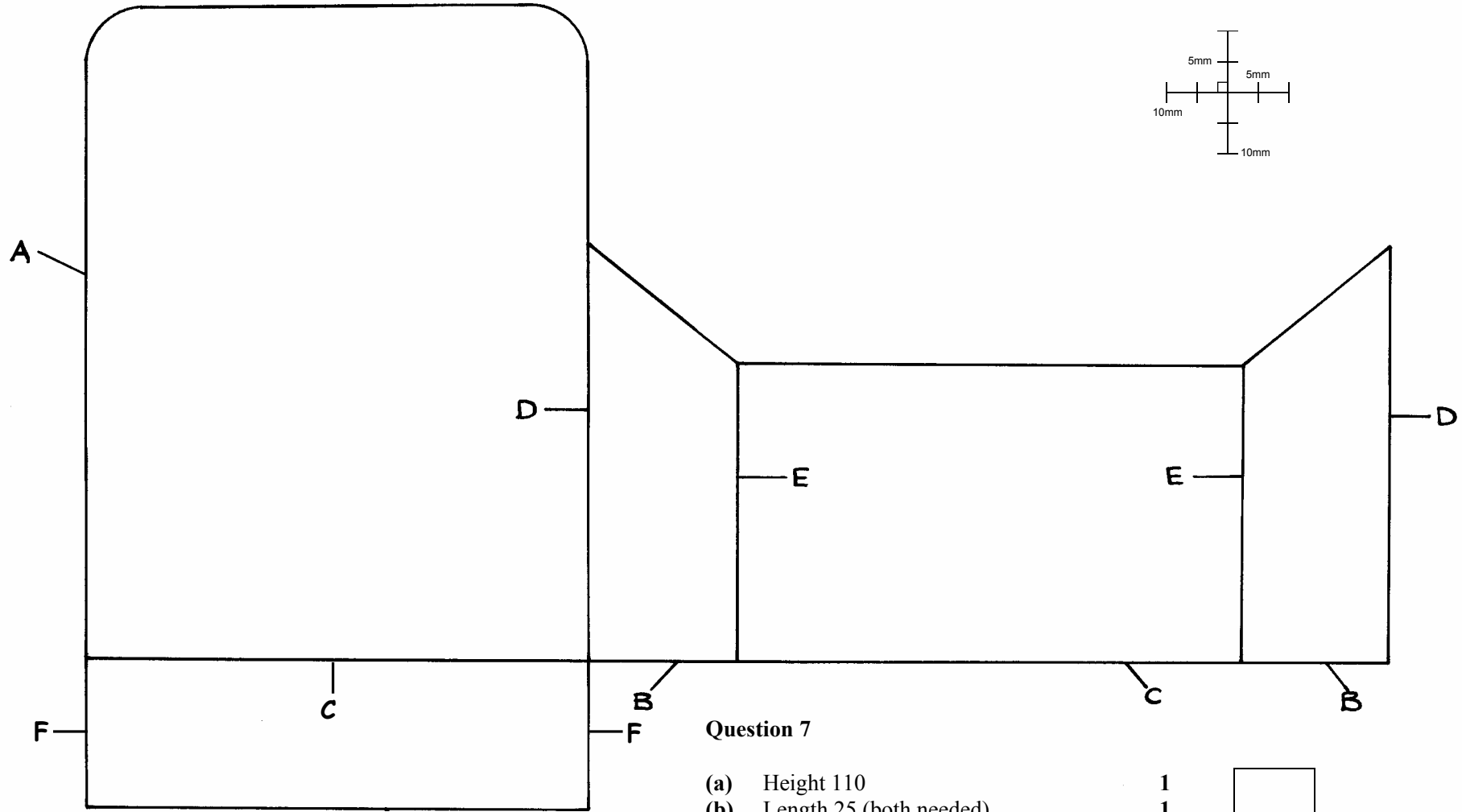
Plan

- (f) Breadth line 1
 - (g) Breadth line 1
 - (h) Button (breadth & position) 1
 - (i) Button (breadth & position) 1
 - (j) Recess (hidden) (breadth & position)
In hidden detail 2 marks, in outline 1 mark 2
 - (k) Line 1
- Total DA 12**



} Position relative to elevation





Question 7

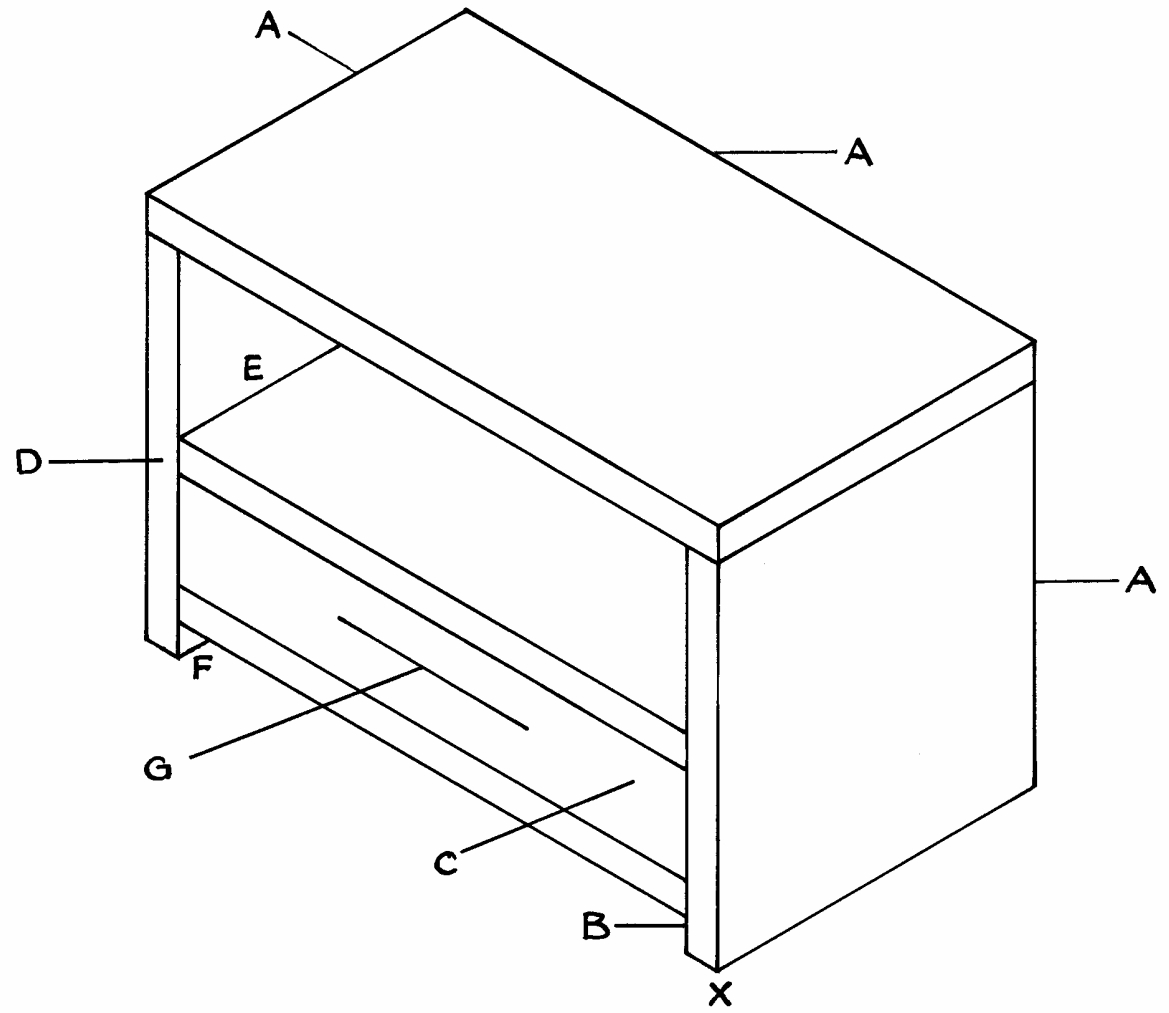
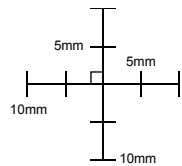
- | | |
|---|----------|
| (a) Height 110 | 1 |
| (b) Length 25 (both needed) | 1 |
| (c) Length 85 (both needed) | 1 |
| (d) Height 70 (both needed) | 1 |
| (e) Height 50 (both needed) | 1 |
| (f) Base
(must be correct size/correct to (b)) | 1 |
| Total DA | 6 |

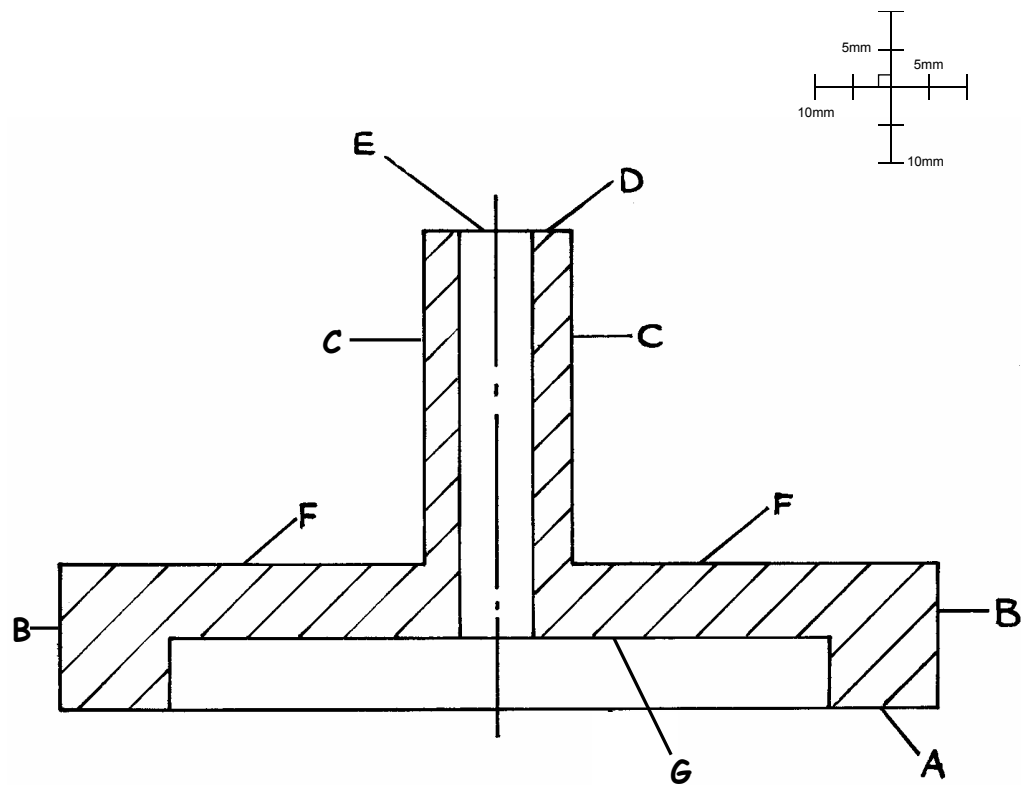
--

Question 8

- (a) Crate size lxbxh **3**
- (b) Gap 5 **1**
- (c) Drawer height 15 **1**
- (d) Thickness shown
(four from six – 1 mark)
(six from six – 2 marks) **2**
- (e) Line shown **1**
- (f) Line shown **1**
- (g) Handle (size + pos) **1**

Total DA 10





Question 9

- | | | |
|-----|-------------------------------------|---|
| (a) | Diameter 120 | 1 |
| (b) | Heights 20 | 1 |
| (c) | Heights 45 | 1 |
| (d) | Diameter 20 | 1 |
| (e) | Hole diameter 10 | 1 |
| (f) | Lines 50 | 1 |
| (g) | Line shown
(height and diameter) | 1 |
| (h) | Full lines shown | 1 |
| (i) | Hatching shown at 45° | 1 |
| (j) | Correct area hatched | 1 |

Total DA 10

[END OF MARKING INSTRUCTIONS]