



2008 Graphic Communication

Intermediate 1

Finalised Marking Instructions

© Scottish Qualifications Authority 2008

The information in this publication may be reproduced to support SQA qualifications only on a non-commercial basis. If it is to be used for any other purposes written permission must be obtained from the Assessment Materials Team, Dalkeith.

Where the publication includes materials from sources other than SQA (secondary copyright), this material should only be reproduced for the purposes of examination or assessment. If it needs to be reproduced for any other purpose it is the centre's responsibility to obtain the necessary copyright clearance. SQA's Assessment Materials Team at Dalkeith may be able to direct you to the secondary sources.

These Marking Instructions have been prepared by Examination Teams for use by SQA Appointed Markers when marking External Course Assessments. This publication must not be reproduced for commercial or trade purposes.

Question 1

- (a) A primary colour 1 mark
- (b) Any two from: orange
violet/purple
green 2 marks
- (c) (i) Any one from: red
yellow
orange 1 mark
- (ii) Any one from: red
yellow
yellow/orange
orange/red 1 mark
- (iii) Any one from: blue
green
violet/purple 1 mark

Total 6 marks

Question 2

- (a) Apple 1 mark
- (b) Banana and Orange 1 mark
- (c) 40,000 1 mark

Total 3 marks

Question 3

- A** Dimension line 1 mark
- B** Centre line 1 mark
- C** Hidden line 1 mark

Total 3 marks

Question 4

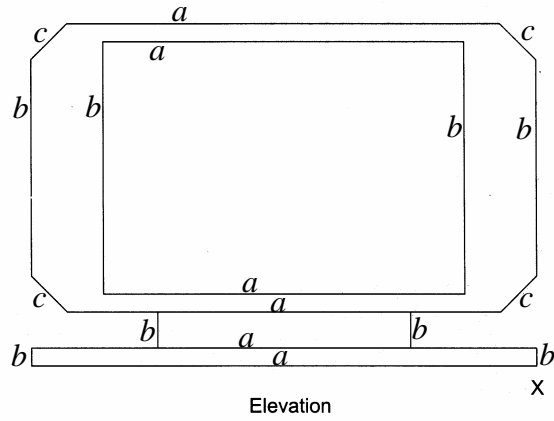
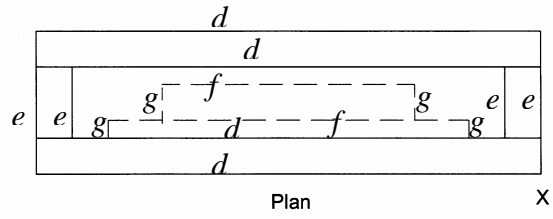
- A** Margin 1 mark
- B** Gutter 1 mark
- C** Column 1 mark
- D** Footer 1 mark

Total 4 marks

Notes for drawing questions:

- Tolerances for all drawings $\pm 1\text{ mm}$
- When marking drawings, all markers must operate the “follow-on rule” and ensure that candidates are **not** penalised twice.
- Marks should be entered in the appropriate place and no other comments added to the candidates scripts.

Question 5



Elevation

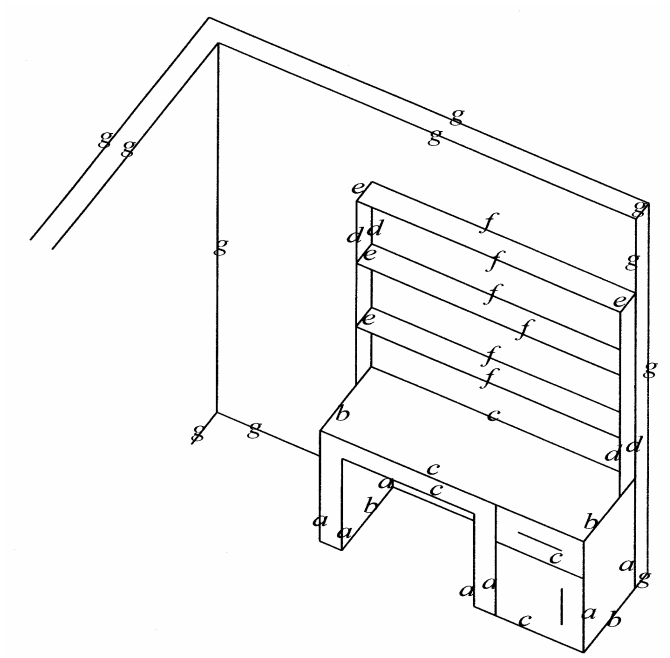
- | | | | |
|-----|---------------------------|----------|----------------|
| (a) | 6 horizontal lines marked | <i>a</i> | 2 marks |
| | 5 – 6 lines | 2 marks | |
| | 3 – 4 lines | 1 mark | |
| (b) | 8 vertical lines marked | <i>b</i> | 2 marks |
| | 7 – 8 lines | 2 marks | |
| | 4 – 6 lines | 1 mark | |
| (c) | 4 sloping lines marked | <i>c</i> | 1 mark |
| | 4 lines | 1 mark | |

Plan

- | | | | |
|-----|----------------------------------|----------|----------------|
| (d) | 4 horizontal lines marked | <i>d</i> | 1 mark |
| | 4 lines | 1 mark | |
| (e) | 4 vertical lines marked | <i>e</i> | 1 mark |
| | 4 lines | 1 mark | |
| (f) | 2 hidden horizontal lines marked | <i>f</i> | 1 mark |
| | 2 lines | 1 mark | |
| (g) | 4 hidden vertical lines marked | <i>g</i> | 2 marks |
| | 3 – 4 lines | 2 marks | |
| | 2 lines | 1 mark | |

Total 10 marks

Question 6



Desk

- | | | | |
|-----|----------------|----------|----------------|
| (a) | 7 lines marked | <i>a</i> | 2 marks |
| | 6 – 7 lines | | 2 marks |
| | 4 – 5 lines | | 1 mark |
| (b) | 4 lines marked | <i>b</i> | 1 mark |
| | 3 – 4 lines | | 1 mark |
| (c) | 5 lines marked | <i>c</i> | 2 marks |
| | 4 – 5 lines | | 2 marks |
| | 3 lines | | 1 mark |

Shelves

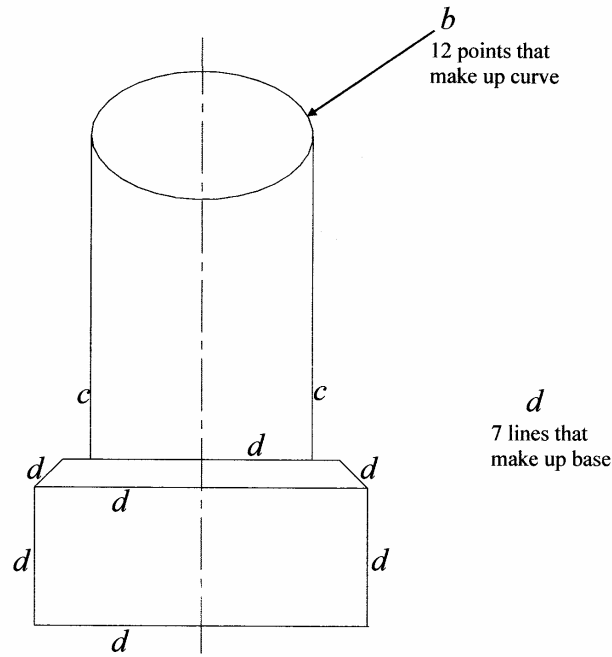
- (d) 4 lines marked *d* **1 mark**
4 lines 1 mark
- (e) 4 lines marked *e* **2 marks**
4 lines 2 marks
2 – 3 lines 1 mark
- (f) 6 lines marked *f* **2 marks**
5 – 6 lines 2 marks
3 – 4 lines 1 mark

Walls

- (g) 11 lines marked *g* **1 mark**
7 – 11 lines 1 mark

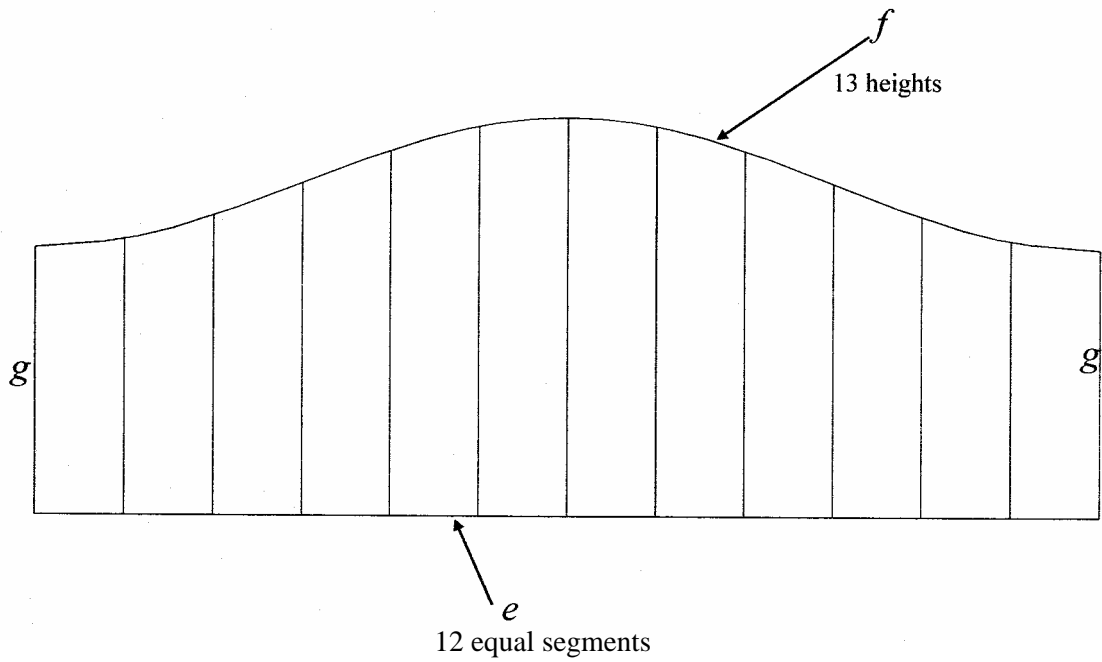
Total 11 marks

Question 7



End Elevation

- | | | | |
|-----|---------------------------|----------|----------------|
| (a) | Construction on plan | | 1 mark |
| (b) | 12 points on curve marked | <i>b</i> | 2 marks |
| | 9 – 12 points | 2 marks | |
| | 7 – 8 points | 1 mark | |
| (c) | 2 vertical lines marked | <i>c</i> | 1 mark |
| | 2 lines | 1 mark | |
| (d) | 7 lines marked | <i>d</i> | 2 marks |
| | 6 – 7 lines | 2 marks | |
| | 4 – 5 lines | 1 mark | |

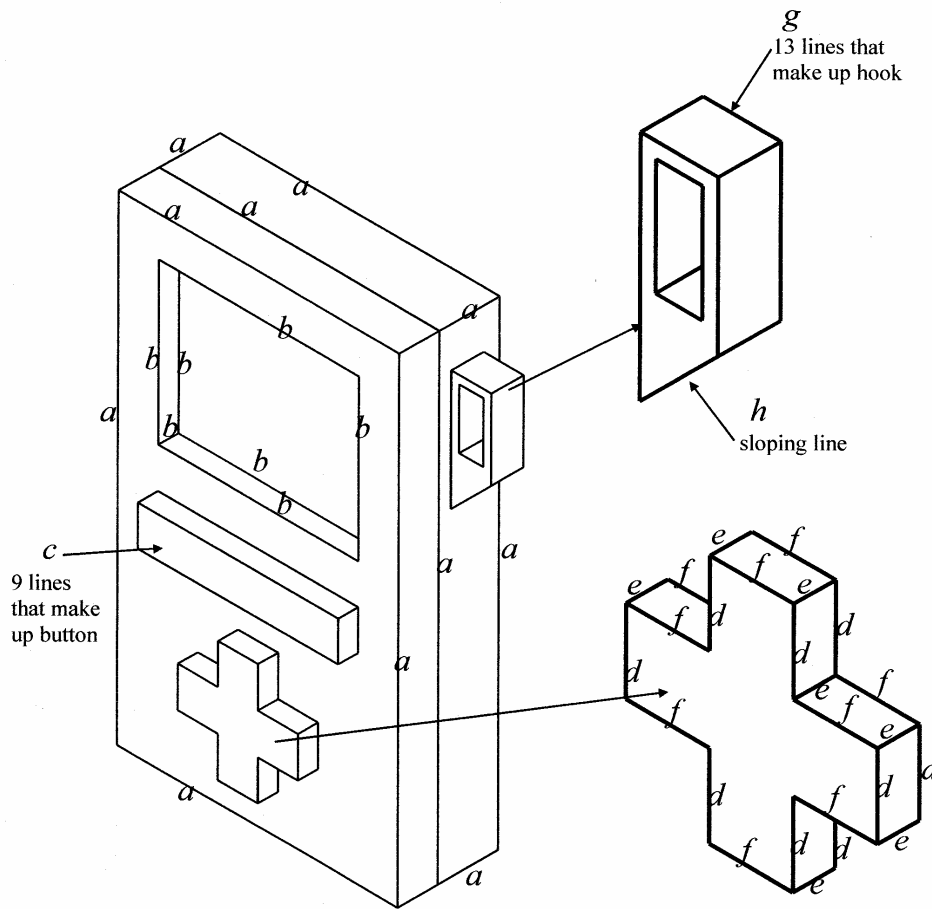


Development

- | | | | |
|-----|--------------------------------|----------|----------------|
| (e) | 12 equally spaced sides marked | <i>e</i> | 1 mark |
| (f) | 13 heights marked | <i>f</i> | 2 marks |
| | 9 – 13 points | | 2 marks |
| | 7 – 8 points | | 1 mark |
| (g) | 2 vertical lines marked | <i>g</i> | 1 mark |
| | 2 lines | | 1 mark |
| (h) | Opened along A-A | | 1 mark |
| (i) | Curve Quality | | 1 mark |

Total 12 marks

Question 8



Body

- (a) 11 lines marked *a* **2 marks**
- 10 – 11 lines 2 marks
- 7 – 9 lines 1 mark

Screen

- (b) 7 lines marked *b* **2 marks**
- 5 – 7 lines 2 marks
- 4 lines 1 mark

Button

- (c) 9 lines marked *c* **1 mark**
- 7 – 9 lines 1 mark

Cursor

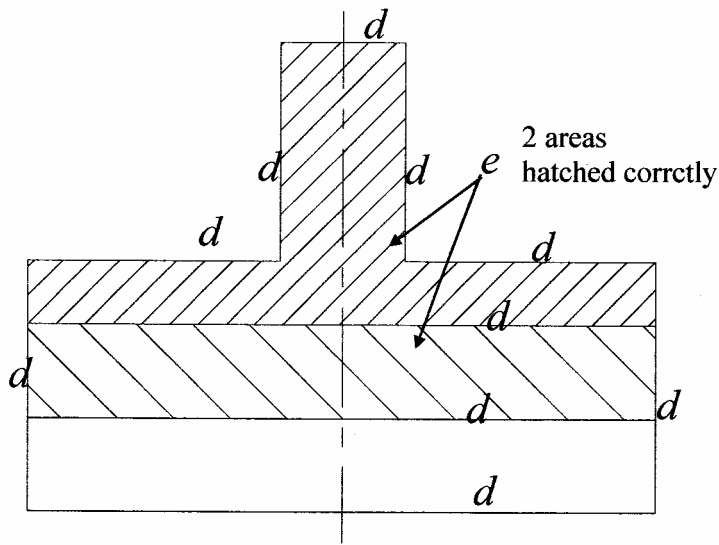
- (d) 9 lines marked *d* **1 mark**
6 – 9 lines 1 mark
- (e) 7 lines marked *e* **1 mark**
6 – 7 lines 1 mark
- (f) 9 lines marked *f* **1 mark**
6 – 9 lines 1 mark

Hook

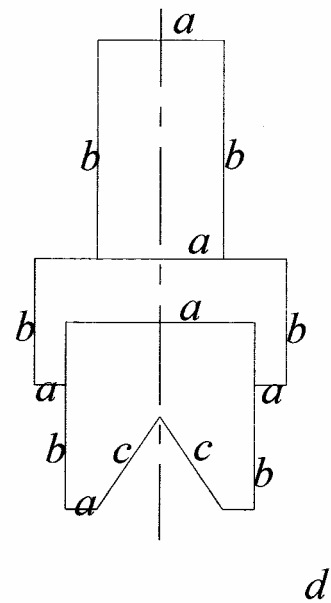
- (g) 13 lines marked *g* **2 marks**
10 – 13 lines 2 marks
7 – 9 lines 1 mark
- (h) 1 sloping line marked *h* **1 mark**

Total 11 marks

Question 9



Sectional Elevation A-A



End Elevation

End Elevation

- | | | | |
|-----|---------------------------|----------|----------------|
| (a) | 6 horizontal lines marked | <i>a</i> | 2 marks |
| | 5 – 6 lines | | 2 marks |
| | 3 – 4 lines | | 1 mark |
| (b) | 6 vertical lines marked | <i>b</i> | 2 marks |
| | 5 – 6 lines | | 2 marks |
| | 3 – 4 lines | | 1 mark |
| (c) | 2 sloping lines marked | <i>c</i> | 1 mark |

Sectional Elevation

- | | | | |
|-----|------------------------------------|----------|----------------|
| (d) | 10 lines marked | <i>d</i> | 3 marks |
| | 9 – 10 lines | | 3 marks |
| | 7 – 8 lines | | 2 marks |
| | 5 – 6 lines | | 1 mark |
| (e) | 2 areas hatched | | 1 mark |
| (f) | Hatching at 45° and differentiated | | 1 mark |

Total 10 marks

[END OF MARKING INSTRUCTIONS]