



2008 Graphic Communication

Intermediate 2

Finalised Marking Instructions

© Scottish Qualifications Authority 2008

The information in this publication may be reproduced to support SQA qualifications only on a non-commercial basis. If it is to be used for any other purposes written permission must be obtained from the Assessment Materials Team, Dalkeith.

Where the publication includes materials from sources other than SQA (secondary copyright), this material should only be reproduced for the purposes of examination or assessment. If it needs to be reproduced for any other purpose it is the centre's responsibility to obtain the necessary copyright clearance. SQA's Assessment Materials Team at Dalkeith may be able to direct you to the secondary sources.

These Marking Instructions have been prepared by Examination Teams for use by SQA Appointed Markers when marking External Course Assessments. This publication must not be reproduced for commercial or trade purposes.

Question 1

- (a) CAD, Computer Aided Drawing, Computer Aided Draughting **1 mark**
- (b) DTP, Desktop Publishing **1 mark**
- (c) Illustration **1 mark**
- (d) Any three from the following:
- quicker to produce (printing of many copies)
 - use of Internet to advertise
 - less storage space
 - more professional looking documents
 - ease of editing existing documents
 - use of document templates
 - easier to transfer drawings
 - easier to share drawings etc
 - environmentally friendly because
- 3 marks**

Total 6 marks

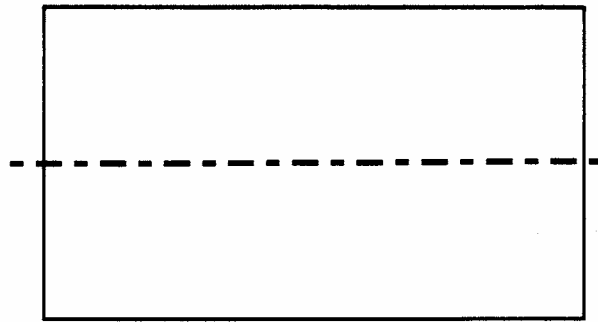
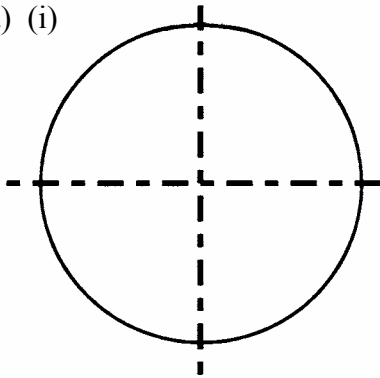
Question 2

- (a) (i) Fillet **1 mark**
- (ii) Ring/Polar Array **1 mark**
- (iii) Scale, Zoom **1 mark**
- (iv) Rectangular array **1 mark**
- (b) Library **1 mark**

Total 5 marks

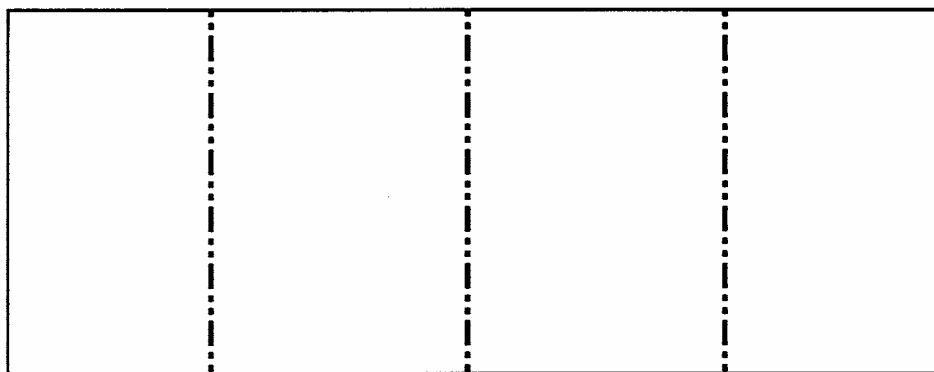
Question 3

(a) (i)



correct on one view minimum for 1 mark

(ii)



(b) (i) AC

(ii) AF

1 mark each

4 marks

Question 4

Any three from the following:

- header/heading
- footer
- column/body text
- gutter
- margin
- sub heading
- rule
- fully justified
- folio.

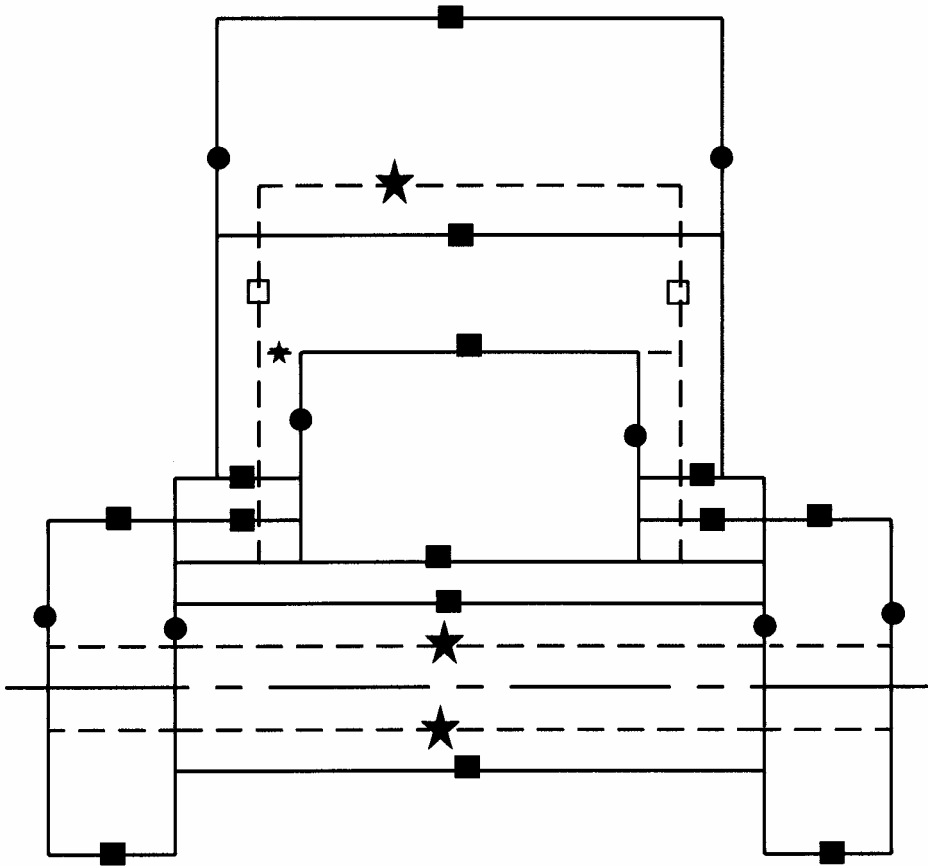
3 marks

Notes for drawing questions:

- Tolerances for all drawings +/- 1mm
- When marking drawings, all markers must operate the “**follow-on rule**” and ensure that candidates are **not** penalised twice.
- Marks should be entered in the appropriate place and no other comments added to the candidates scripts.

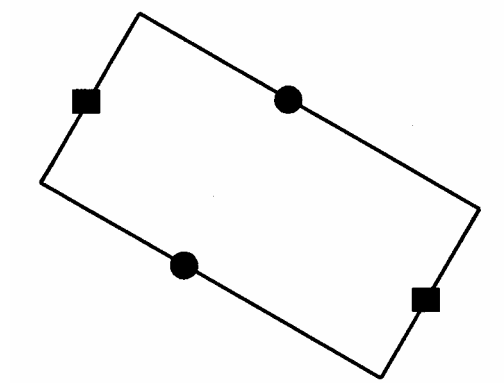
Question 5

End Elevation



- | | | | |
|-----|-----------------------|---|----------------|
| (a) | 14 lines marked | ■ | 4 marks |
| | 12 – 14 lines | | 4 marks |
| | 10 – 11 lines | | 3 marks |
| | 8 – 9 lines | | 2 marks |
| | 5 – 7 lines | | 1 mark |
| | | | |
| (b) | 8 lines marked | ● | 3 marks |
| | 7 – 8 lines | | 3 marks |
| | 5 – 6 lines | | 2 marks |
| | 3 – 4 lines | | 1 mark |
| | | | |
| (c) | 4 hidden lines marked | ★ | 2 marks |
| | 3 – 4 lines | | 2 marks |
| | 2 lines | | 1 mark |
| | | | |
| (d) | 2 hidden lines marked | □ | 1 mark |

True Shape



(e) 2 lines marked



1 mark

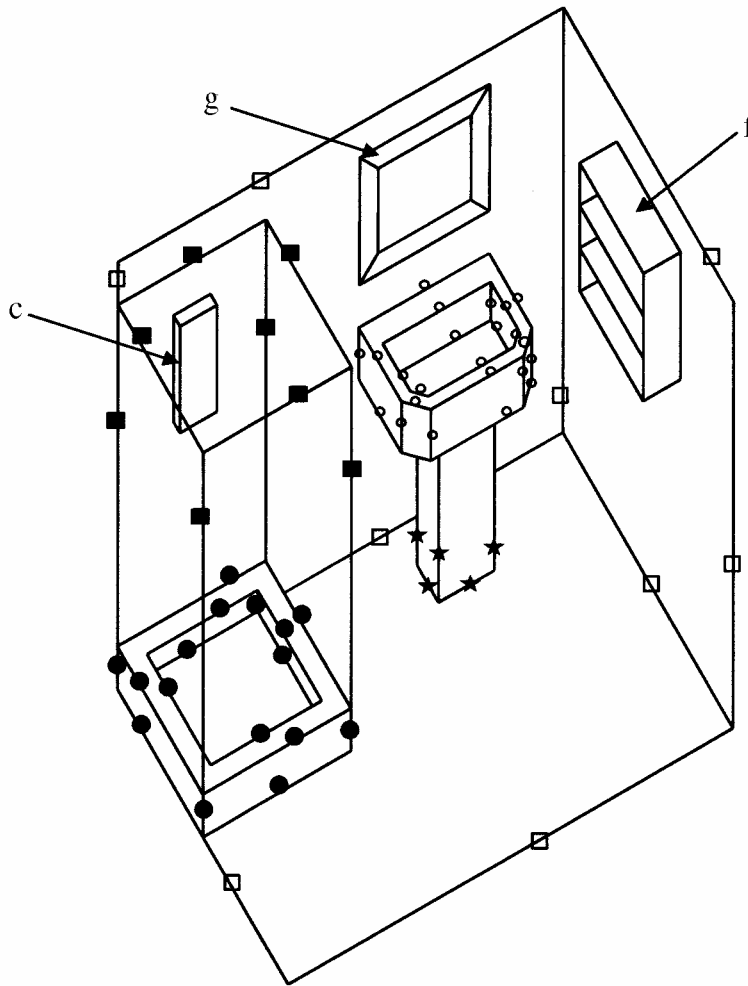
(f) 2 lines marked



1 mark

Total 12 marks

Question 6



Shower Base

- (a) 16 lines marked **2 marks**
 13 – 16 lines 2 marks
 7 – 12 lines 1 mark

Shower Screen

- (b) 8 lines marked **1 mark**
 6 – 8 lines 1 mark

Shower Unit

- (c) 9 lines as shown **1 mark**
 7 – 9 lines 1 mark

Sink Pedestal

- (d) 5 lines marked **1 mark**
 3 – 5 lines 1 mark

Sink

- (e) 24 lines marked **3 marks**
- | | |
|---------------|---------|
| 19 – 24 lines | 3 marks |
| 13 – 18 lines | 2 marks |
| 8 – 12 lines | 1 mark |

Shelves

- (f) 14 lines as shown **2 marks**
- | | |
|---------------|---------|
| 10 – 14 lines | 2 marks |
| 7 – 9 lines | 1 mark |

Mirror

- (g) 12 lines as shown **2 marks**
- | | |
|-------------|---------|
| 9– 12 lines | 2 marks |
| 6 – 8 lines | 1 mark |

Walls

- (h) 9 lines marked **1 mark**
- | | |
|-------------|--------|
| 7 – 9 lines | 1 mark |
|-------------|--------|

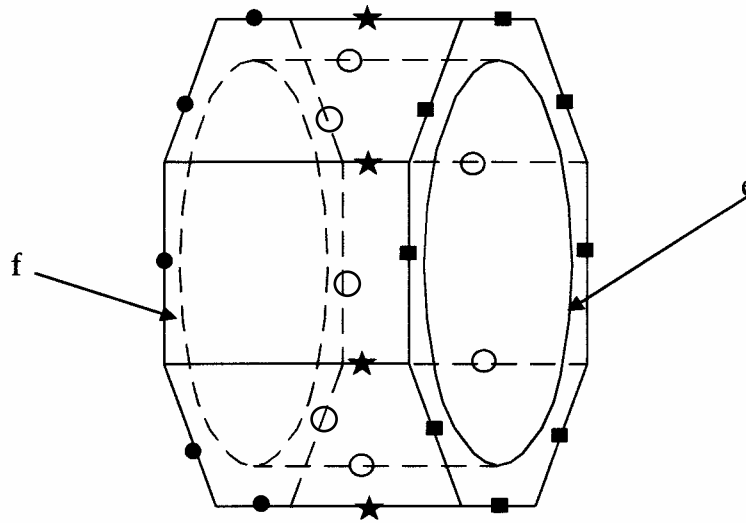
Position relative to 'X'

- (i) 3 out of 5 (excluding Shower Base and Shower Screen).
Using any corner for location on item. **1 mark**

Total 14 marks

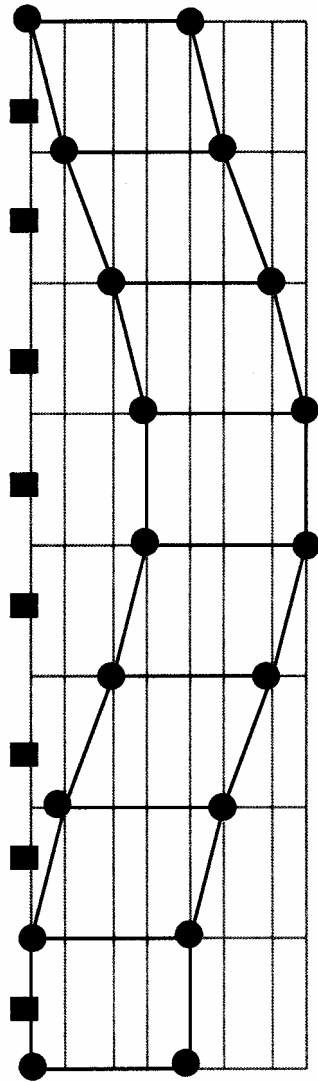
Question 7

Elevation



- | | | | |
|-----|---|---------|----------------|
| (a) | 8 lines RH octagon marked | ■ | 2 marks |
| | 6 – 8 lines | 2 marks | |
| | 4 – 5 lines | 1 mark | |
| (b) | 5 lines LH octagon marked | ● | 1 mark |
| | 3 – 5 lines | 1 mark | |
| (c) | 4 connecting lines marked | ★ | 1 mark |
| (d) | Construction for circles shown on given views | | 1 mark |
| (e) | Full circle as shown | | 1 mark |
| | 7 – 12 points | 1 mark | |
| (f) | Hidden circle as shown | | 2 marks |
| | 10 – 12 points | 2 marks | |
| | 7 – 9 points | 1 mark | |
| (g) | 7 hidden lines marked | ○ | 2 marks |
| | 5 – 7 lines | 2 marks | |
| | 3 – 4 lines | 1 mark | |

Development

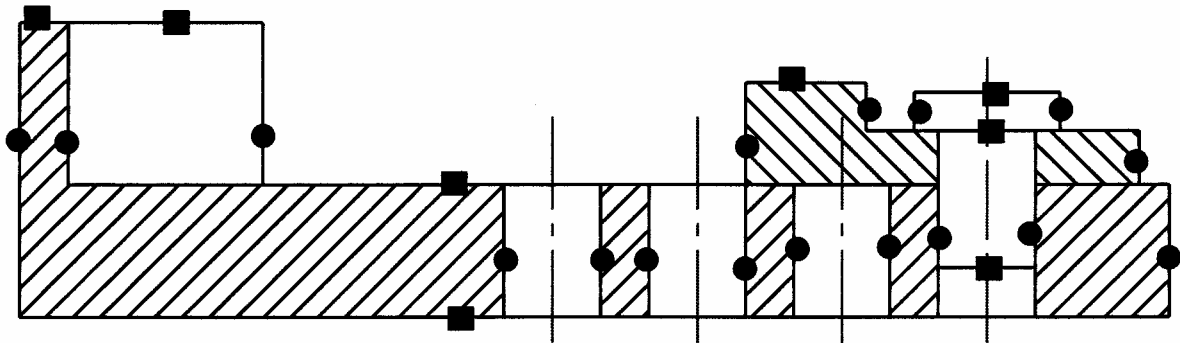


- | | | | |
|-----|-------------------------------|---|---------|
| (h) | 8 equally spaced sides marked | ■ | 1 mark |
| (i) | 18 heights marked | ● | 2 marks |
| | 13 – 18 heights | | 2 marks |
| | 7 – 12 heights | | 1 mark |
| (j) | opened along A-A | | 1 mark |

Total 14 marks

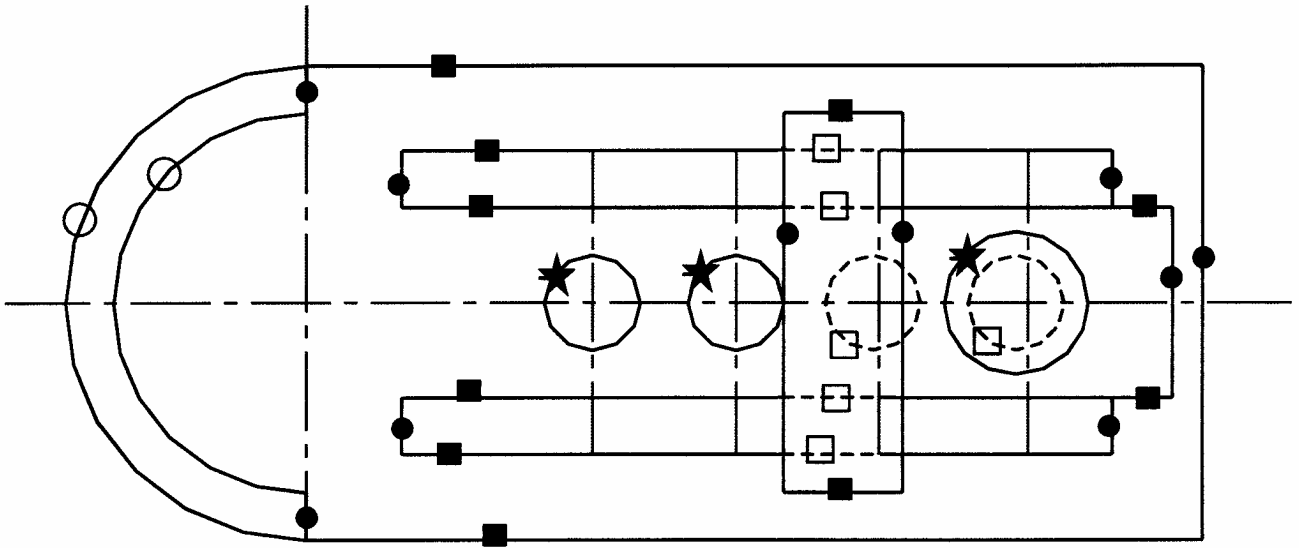
Question 8

Sectional Elevation



- (a) 17 vertical lines marked ● **3 marks**
- 14 – 17 lines 3 marks
 - 10 – 13 lines 2 marks
 - 7 – 9 lines 1 mark
- (b) 8 horizontal lines marked ■ **1 mark**
- 5 – 8 lines 1 mark
- (c) Hatching correct as shown for base only @ 45° (5 areas) **1 mark**
- (d) Block and pin hatched correctly @ 45° showing differentiation and pin not hatched. **1 mark**

Plan



- | | | | |
|-----|-------------------------------|---|---------|
| (e) | 10 lines marked | ■ | 2 marks |
| | 8 – 10 lines | | 2 marks |
| | 5 – 7 lines | | 1 mark |
| (f) | 10 lines marked | ● | 1 mark |
| (g) | 2 arcs marked | ○ | 1 mark |
| (h) | 6 hidden lines/circles marked | □ | 1 mark |
| | 4 – 6 hidden lines/circles | | 1 mark |
| (i) | 3 circles marked | ★ | 1 mark |

Total 12 marks

[END OF MARKING INSTRUCTIONS]