



2008 Graphic Communication

Standard Grade – Credit

Finalised Marking Instructions

© Scottish Qualifications Authority 2008

The information in this publication may be reproduced to support SQA qualifications only on a non-commercial basis. If it is to be used for any other purposes written permission must be obtained from the Assessment Materials Team, Dalkeith.

Where the publication includes materials from sources other than SQA (secondary copyright), this material should only be reproduced for the purposes of examination or assessment. If it needs to be reproduced for any other purpose it is the centre's responsibility to obtain the necessary copyright clearance. SQA's Assessment Materials Team at Dalkeith may be able to direct you to the secondary sources.

These Marking Instructions have been prepared by Examination Teams for use by SQA Appointed Markers when marking External Course Assessments. This publication must not be reproduced for commercial or trade purposes.

Credit

- 1 (a) Animations are watched and simulations are interactive/You can affect the outcome in a simulation, you can't in an animation. KI 1
- (b) It could be used to show how it is assembled/It could be used to show the doors and drawers opening. KI 1
- (c) 1. Many different and dangerous situations can be simulated
2. It is cheaper than flying a real plane.
Pilots can be trained to land in different airports/It is safer than flying a real plane KI 2
- (d) How the car will perform in a crash situation
The aerodynamics of the car can be tested KI 1

TOTAL KI 5

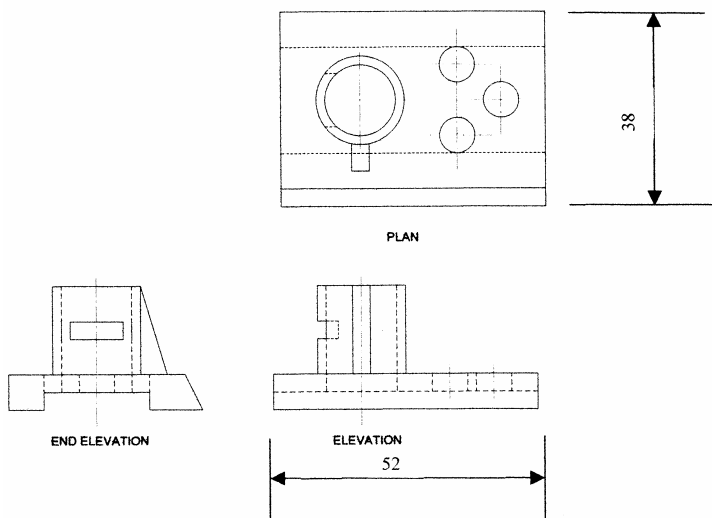
- 2 (a)
- | Area | Colour | Reason for Choice | |
|---|---|---|------|
| Interior walls | <i>Yellow</i> | Bright and cheerful/warm/highly visible/lively/sunny | |
| Checkout chairs and visible edges of the display cabinets | <i>Red</i> | Warm, exciting, active, in contrast with yellow | |
| Worktops at the tills | Green, Yellow-Green, Yellow-Orange, Orange | To be in harmony with the walls | |
| Floor | Blue, Blue-Violet, Violet, Red-Violet, Red | To be in contrast with the walls | |
| First Aid Room signs and door | Green | Associated with safety | KI 5 |
- (b) Bright and attractive/Visual excitement/Associated with children KI 1
- (c) Advancing KI 1
- (d) They would make the store logo and materials easily recognisable/ Company identity KI 1
- (e) Tone KI 1

TOTAL KI 9

- 3 (a) 1 Ease of editing/Storage and retrieval of work
 2 New designs from existing/Standardisation of drawings
 3 Library of commonly used parts/Shorter lead time KI 3
- (b) 1 Continual need for updating software or operating systems
 2 Possibility of system failure/System crash/Viruses
 3 Data loss/Security/Computer hacking KI 3
- (c) Device 1 Scanner
 Device 2 Digitiser/Graphics tablet/Digital camera KI 2
- (d) Wireframe KI 1
- (e) 1 Solid
 2 Surface/Surface rendered KI 2

TOTAL KI 11

- 4 (a) Answer 1 one
 Answer 2 five KI 2
- (b) Isometric KI 1
- (c) 1 Oblique
 2 1 Point Perspective
 3 2 Point Perspective KI 3
- (d) Answer 1 8
 Answer 2 14 KI 2
- (e) Overall Length of Elevation 52
 Overall Breadth of Plan 38 KI 2

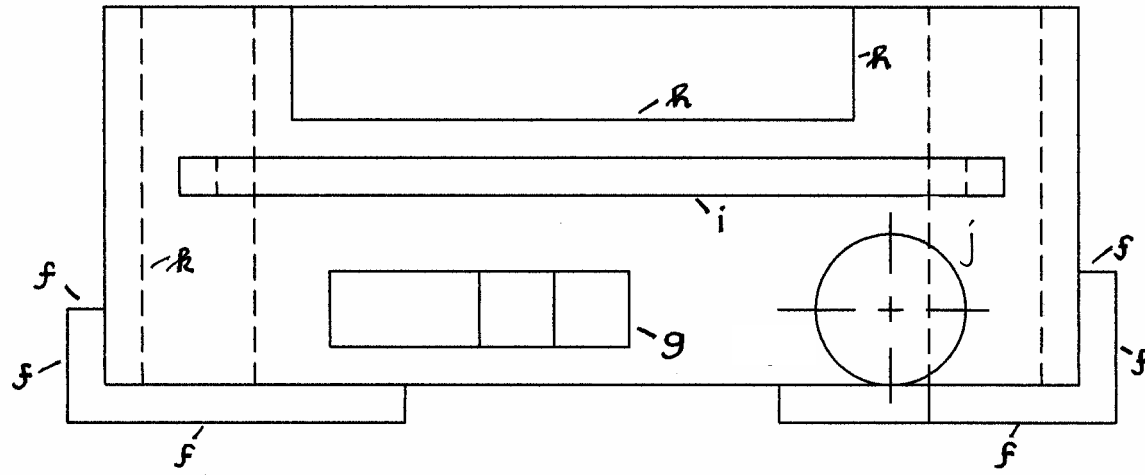


TOTAL KI 10

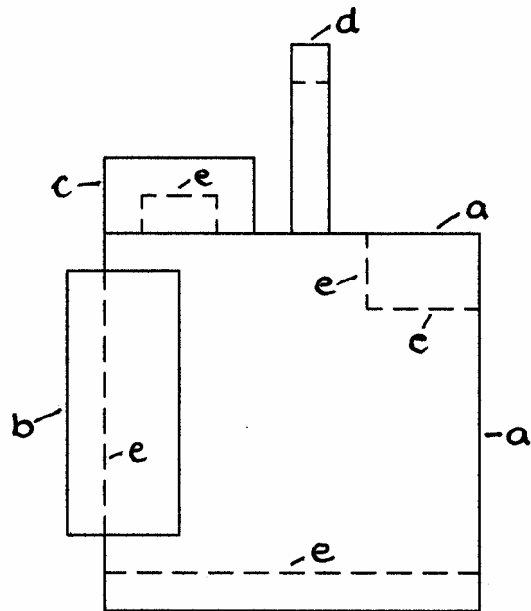
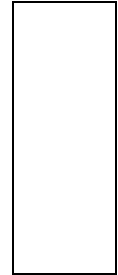
- 5 (a) (i) DTP
- (ii) CAD
- (iii) Illustration/Rendering KI 3
- (b) Device 1 Colour laser printer
- Device 2 Ink jet printer KI 2

TOTAL KI 5

Question 6



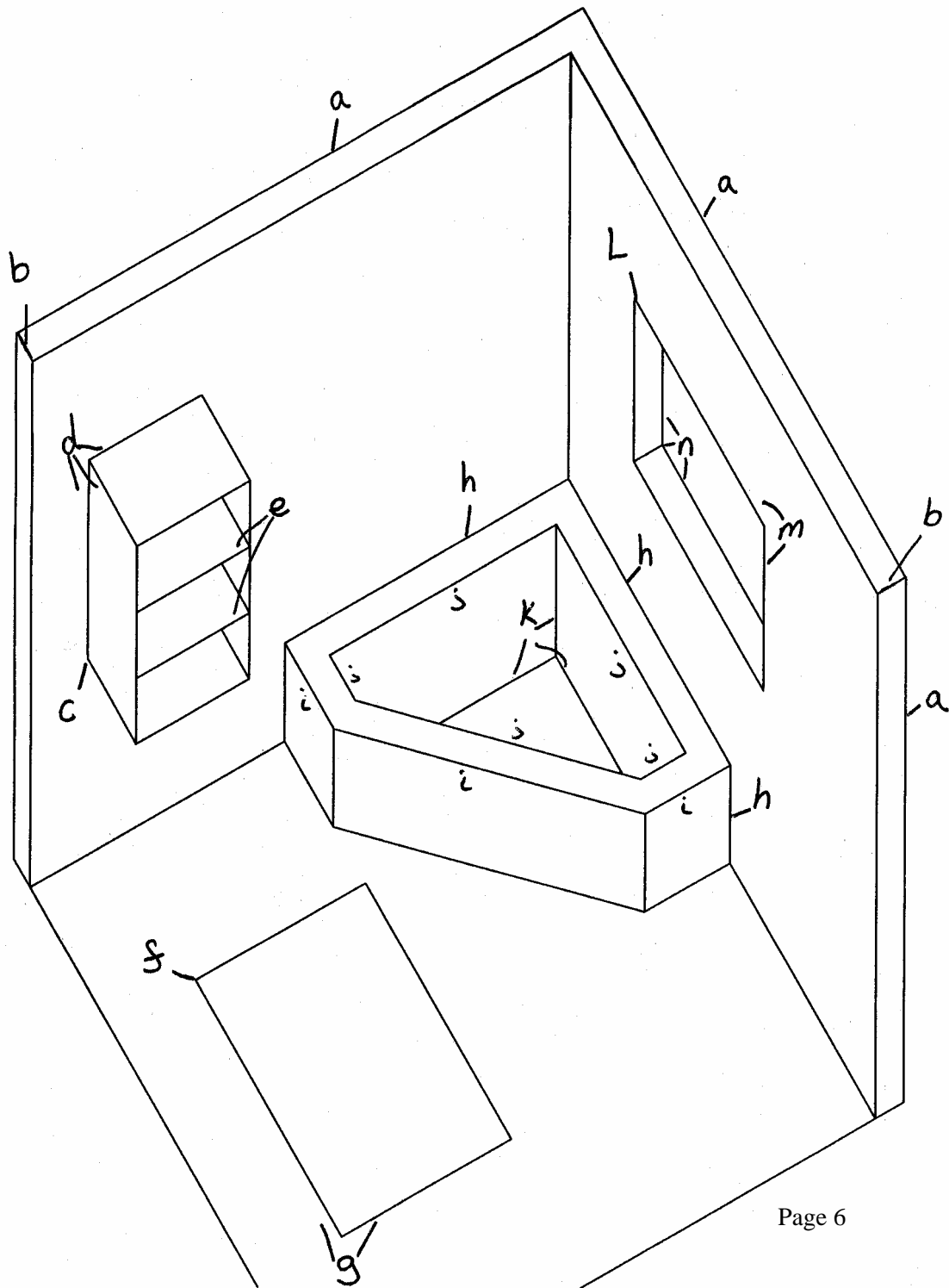
- | | | |
|-----|-----------------------------------|----------|
| (f) | Speakers length and breadth | 1 |
| (g) | Buttons position and width | 1 |
| (h) | Rectangle length and width | 1 |
| (i) | Handle position, length and width | 1 |
| (j) | Circle position and diameter | 1 |
| (k) | Hidden lines (4-6 for 1) | 1 |
| | DA | 6 |



- | | | |
|-----|-------------------------------------|----------|
| | Correct projection | 1 |
| (a) | Height and breadth | 1 |
| (b) | Rectangle height and breadth | 1 |
| (c) | Button height and diameter | 1 |
| (d) | Handle position, height and breadth | 1 |
| (e) | Hidden lines (5-8 for 1) | 1 |
| | DA | 6 |



Total DA 12

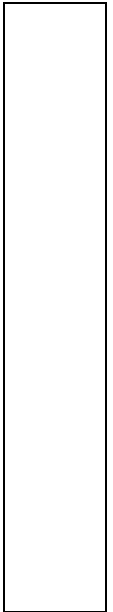


Question 7

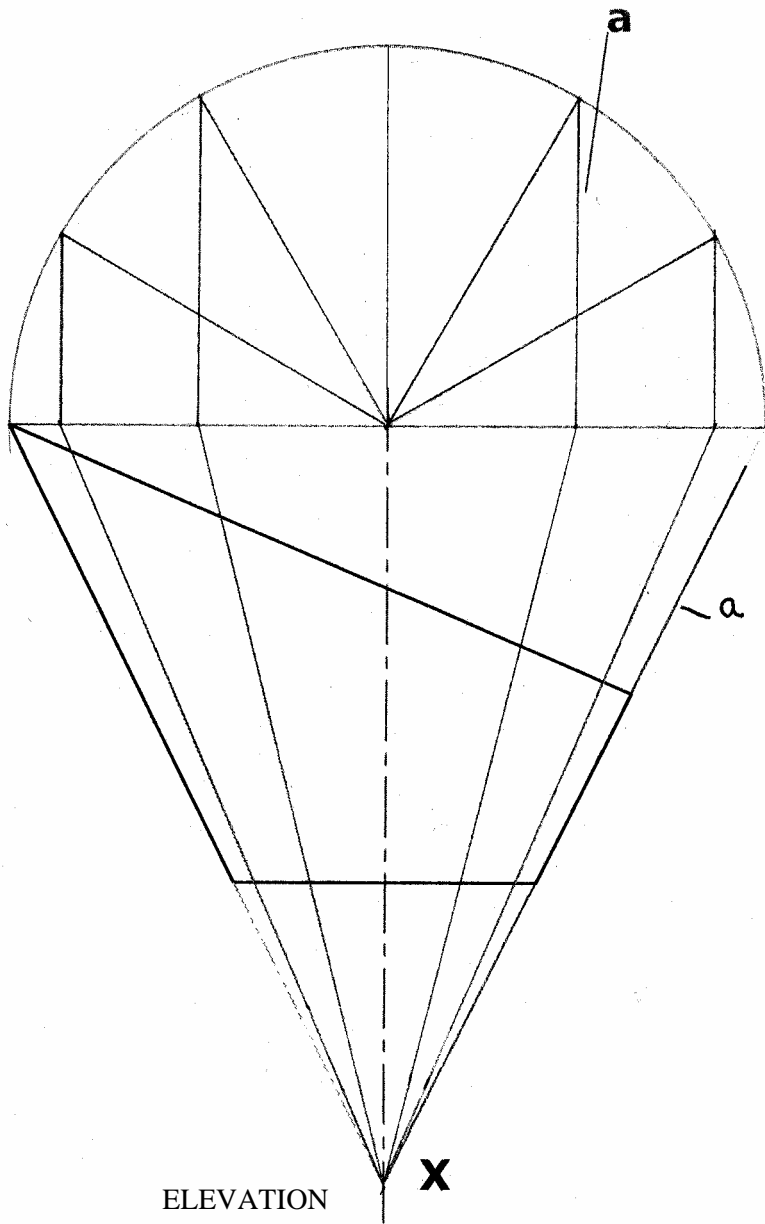
Planometric – Bathroom

- | | | |
|-----|-------------------------|---|
| (a) | Wall detail (l, b & h) | 1 |
| (b) | Wall thickness | 1 |
| (c) | Shelf unit position | 1 |
| (d) | Shelf unit (l, b & h) | 1 |
| (e) | Shelves and depth shown | 1 |
| (f) | Bath mat position | 1 |
| (g) | Bath mat (l & b) | 1 |
| (h) | Bath (l, b & h) | 1 |
| (i) | Bath angled lines | 1 |
| (j) | Bath inside edge | 1 |
| (k) | Bath depth (inside) | 1 |
| (l) | Window position | 1 |
| (m) | Window size (l & h) | 1 |
| (n) | Window depth | 1 |

TOTAL DA 14



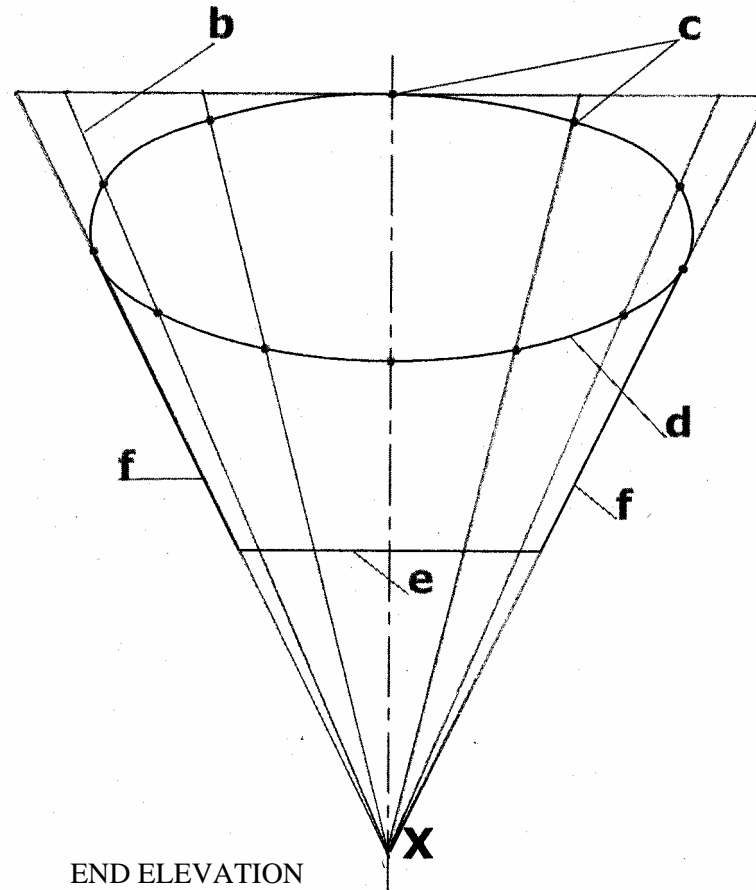
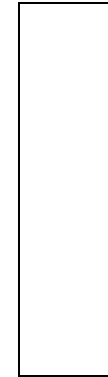
Question 8(a)



End Elevation

- (a) Divide circle/plan & project to Elev. 1
- (b) Project Div to End Elev 1
- (c) Establish curve points (5-8 = 1; >8 = 2 marks) 2
- (d) Good freehand curve 1
- (e) Horizontal line 1
- (f) Cone sides 1

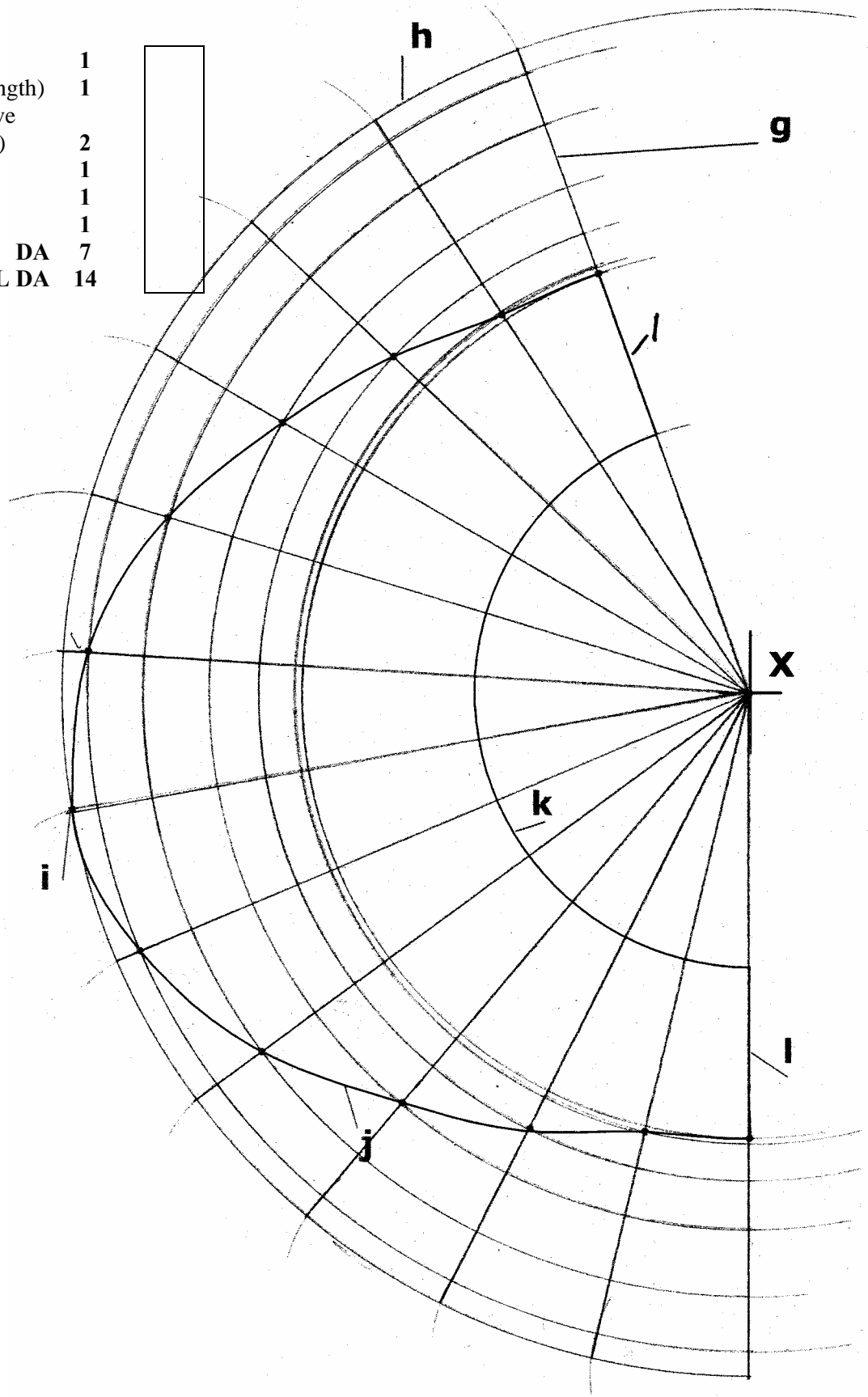
DA 7

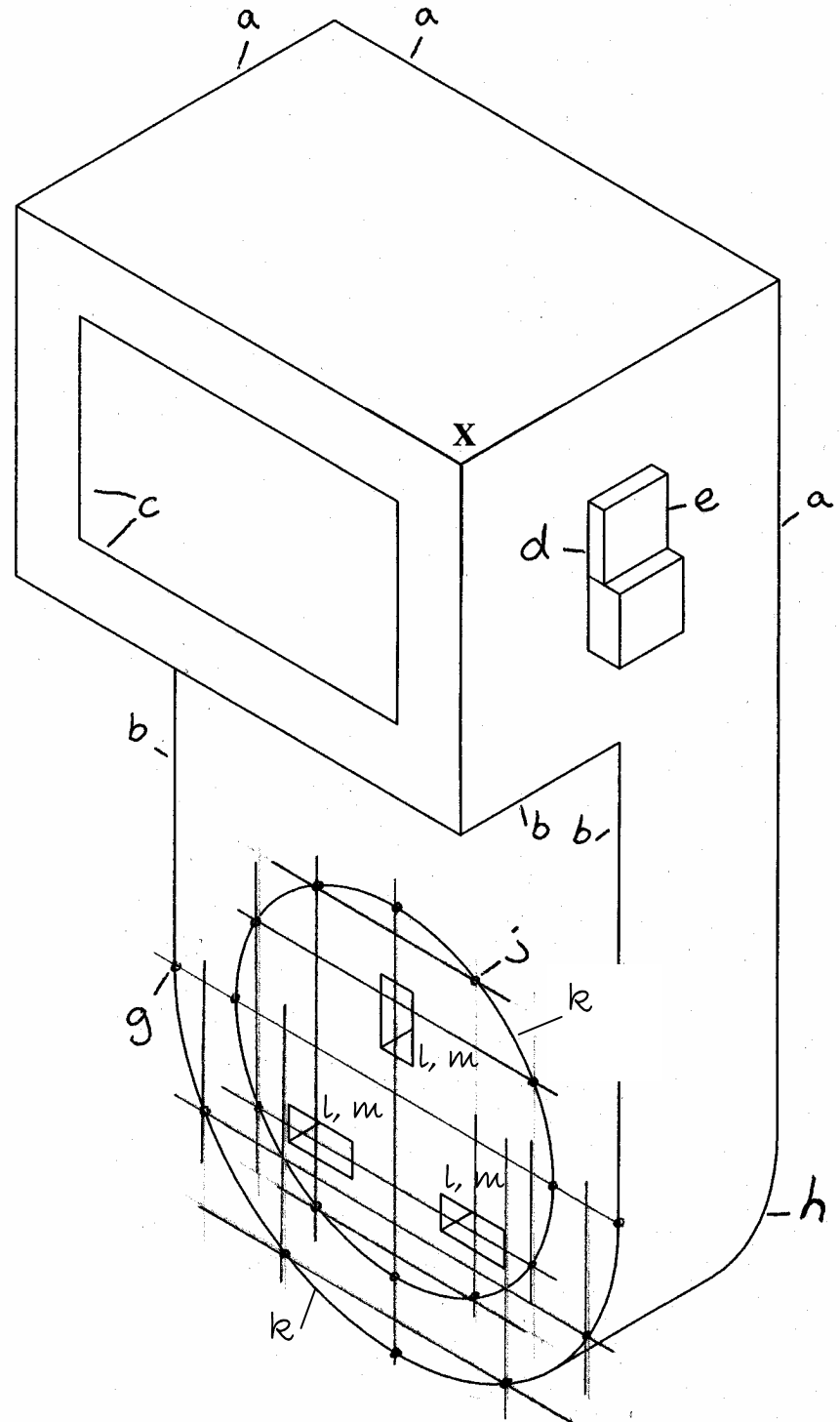
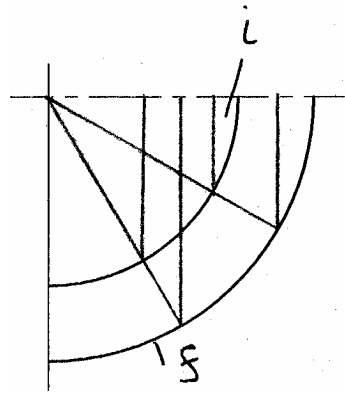


Question 8(b)

Surface Development

(g)	True length of edge	1
(h)	12 divisions (correct length)	1
(i)	Establish points on curve (4-8 = 1; > 8 = 2 marks)	2
(j)	Good freehand curve	1
(k)	Semi circle	1
(l)	Outline	1
	DA	7
	TOTAL DA	14

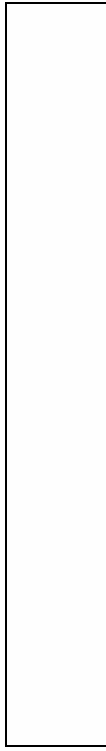




Question 9

- | | | |
|-----|----------------------------------|---|
| (a) | Crate (l, b & h) | 2 |
| | 2 from 3 = 1 mark | |
| (b) | Depth of cut out (3 lines) | 1 |
| (c) | Screen (l, h & position) | 1 |
| (d) | Side buttons (surface detail) | 1 |
| (e) | Side buttons (raised) (both) | 1 |
| (f) | Construction for semi circle | 1 |
| (g) | Establish points for semi circle | 1 |
| | Minimum 5 points | |
| (h) | Establish part curve | 1 |
| | Clear evidence | |
| (i) | Construction for full circle | 1 |
| (j) | Establish points for circle | 2 |
| | (12 = 2; 8 = 1) | |
| (k) | Good freehand curves | 2 |
| (l) | Pins holes (l, b & d) | 1 |
| | 2 from 3 | |
| (m) | Pins position | 1 |
| | 2 from 3 | |

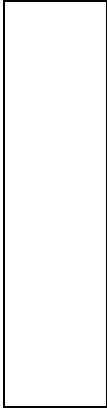
TOTAL DA 16



Question 10

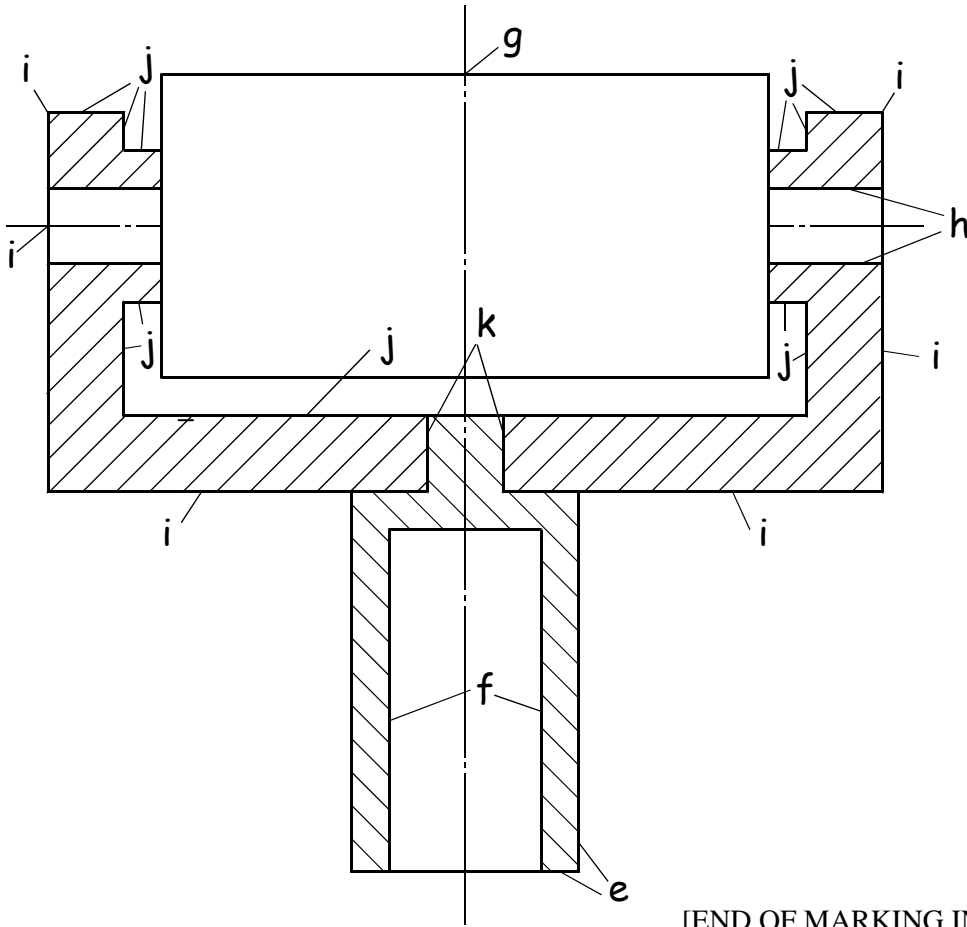
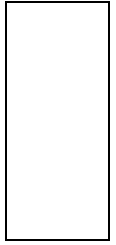
Sectional Elevation

- (e) Handle outline (1 & b) 1
 - (f) Handle inside (3 lines) 1
 - (g) Roller (size & position) 1
 - (h) Axle (diameter & position) both 1
 - (i) Cradle outside profile (6 lines) 1
 - (j) Cradle inside profile
(9 lines = 2; 5 lines = 1) 2
 - (k) Lines (both) 1
 - (l) Hatching shown 1
 - (m) Hatching to BS convention 1
- DA 10**



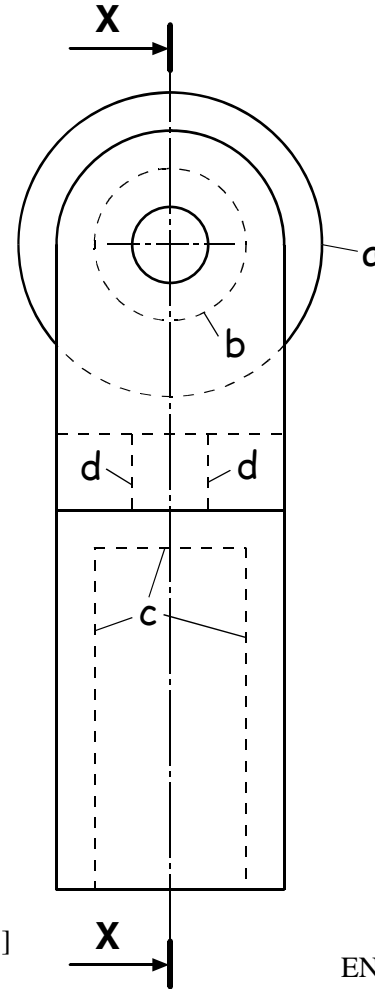
End Elevation

- (a) Circle diameter 40 (part hidden) 1
 - (b) Circle diameter 20 (hidden) 1
 - (c) Handle hidden lines (3 lines) 1
 - (d) Cradle hidden lines (3 lines) 1
- DA 4**
TOTAL DA 14



SECTIONAL ELEVATION

[END OF MARKING INSTRUCTIONS]



END ELEVATION