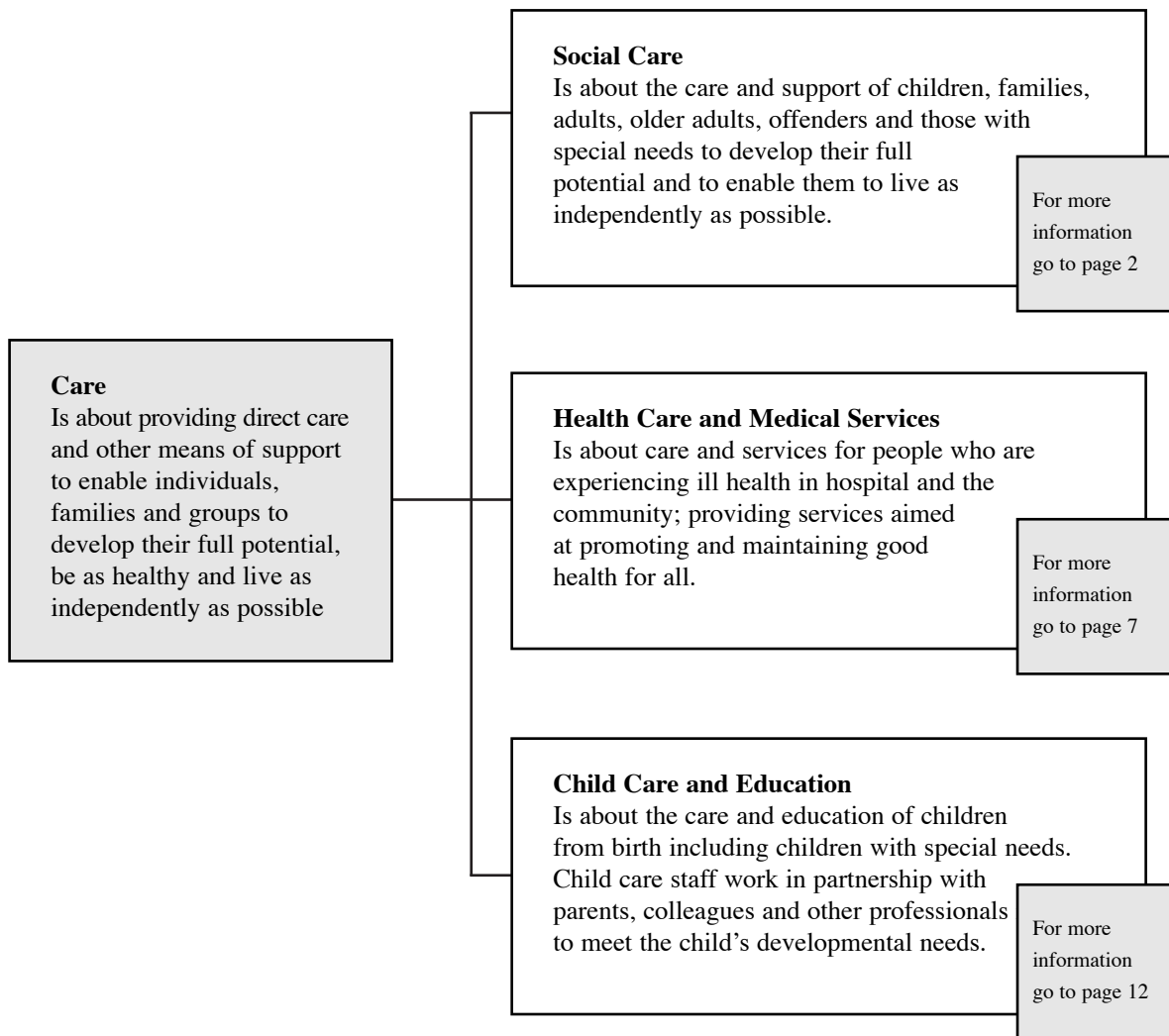


Care

1. career options

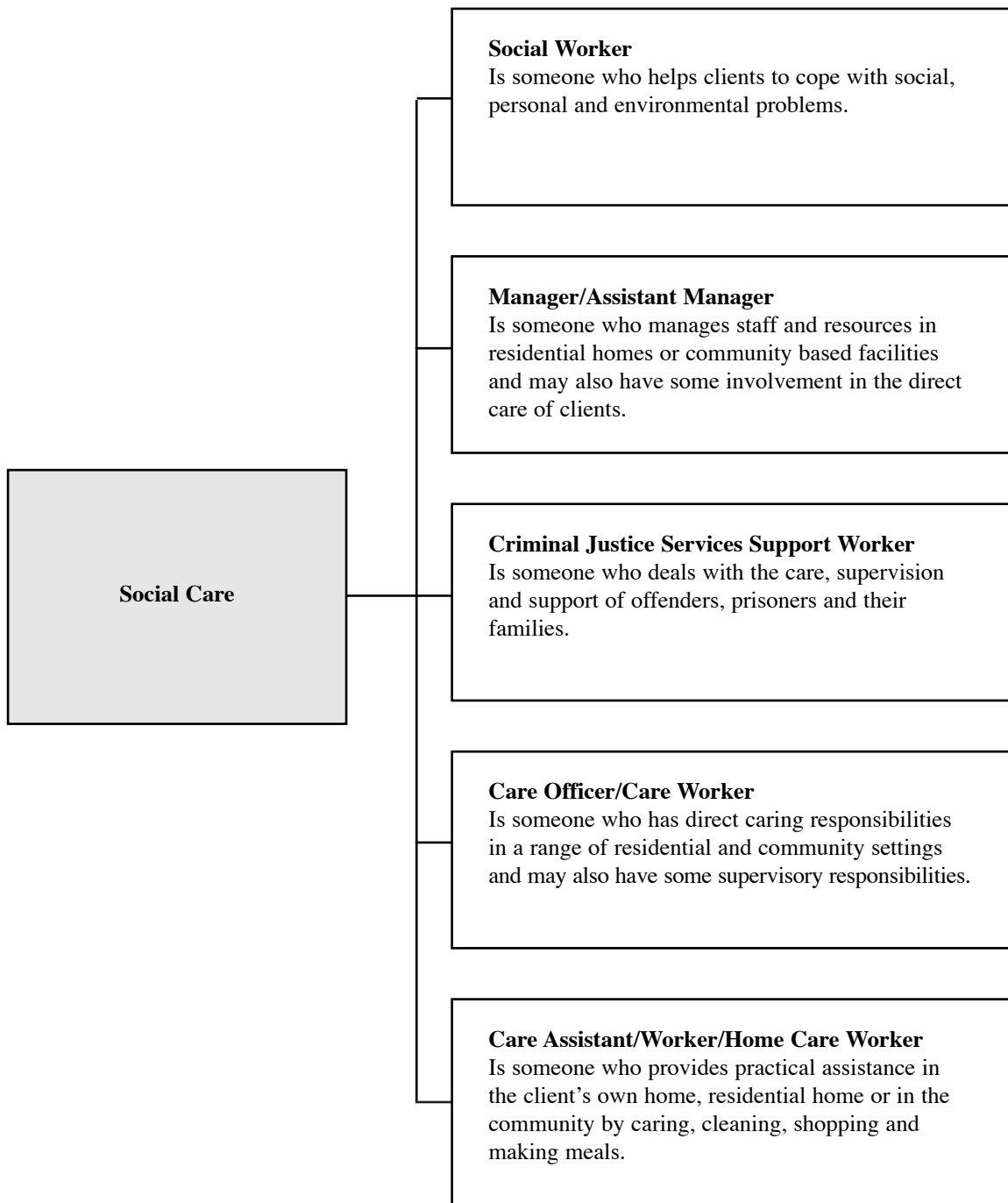


Other career areas related to Care, include:

- 2. Arts and Social Sciences
- 18. Science
- 18. Science (Laboratory Operations)

Social Care

2. jobs and careers



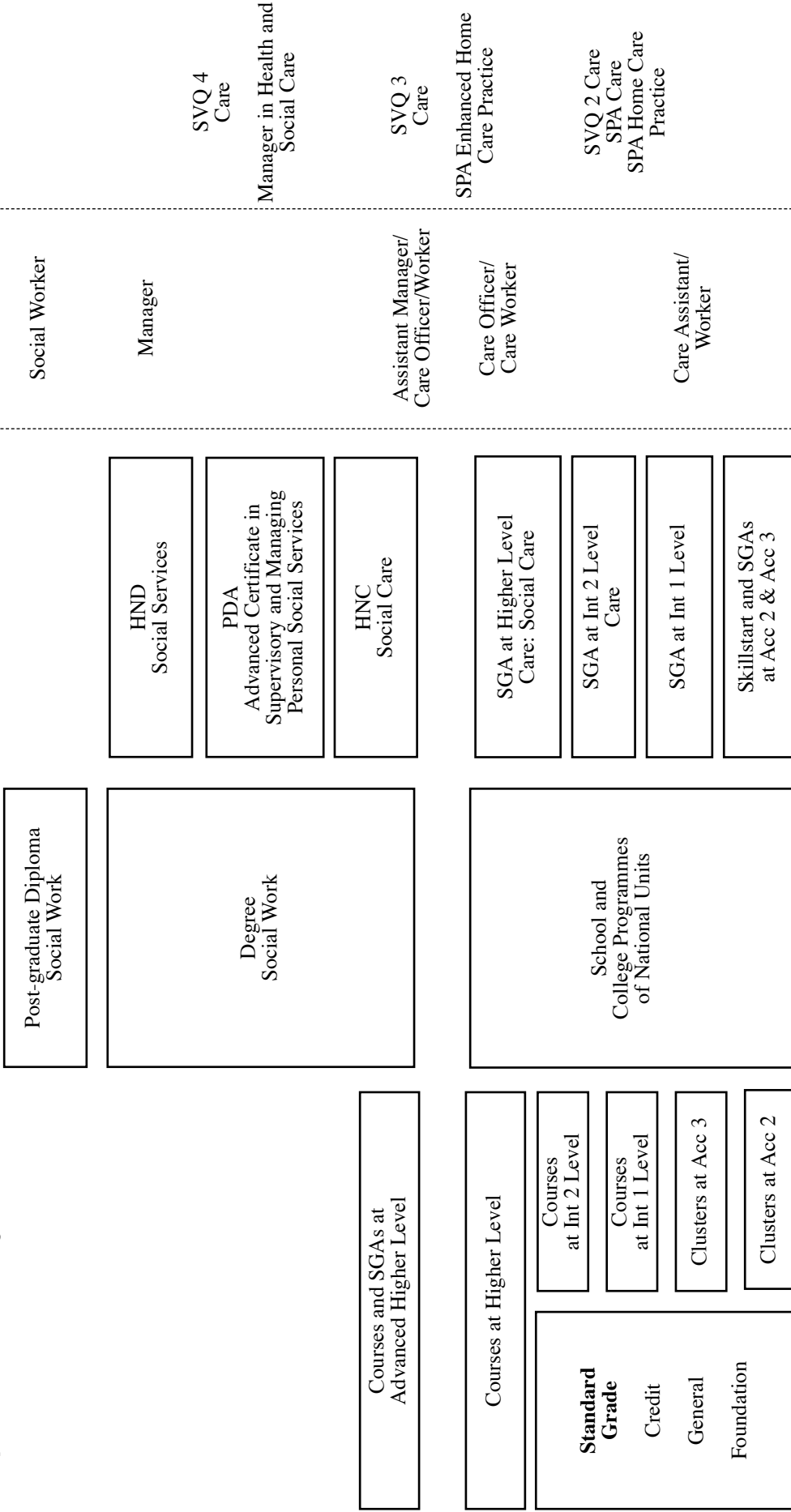
Social Care

3: qualifications and jobs

School, Further and Higher Education Qualification awards

Workbased Award

Type of job



This diagram outlines the main qualifications in the Social Care area. A full list of all SQA qualifications is on the following pages. People can progress vertically from one qualification to another, eg from a Course at Int 1 to a Course at Int 2. In addition people can progress diagonally from one level of Standard Grade to a higher level of Course or Scottish Group Award (SGA), eg from Standard Grade at General level to Courses or SGAs at Int 2 level.

In this diagram, SVQs and PDAs in the Vocational sector are placed according to current practice and usage in illustrating the relationships and pathways between qualifications, jobs and careers.

Social Care

4. qualifications

HND

Supporting Special Learning Needs

HNC

Counselling

Housing

Social Care

Social Care (incorporating SVQs at level III)

Social Welfare Supervision and Management

Supporting Special Learning Needs

Welfare Rights and Money Advice

Working with Communities

PDA

Diploma

Employment Specialists Working with Blind and Partially Sighted People

Advanced Certificate

Foundation Course in Gestalt Therapy Theory and Skills

Supervising and Managing Personal Social Services

SGA

Higher

Care: Social Care

Int 2

Care

GSVQ III

Care

Care: Social Care

GSVQ II

Care

NC Cluster

Caring for Yourself and Others (levels 2 and 3)

National Course

Higher

Care

Care Practice

Int 2

Care

Care Issues for Society

Health and Safety in Care Settings

Int 1

Care

SVQ 4

Care

Community Work

Community Justice (Work with Offending Behaviour)

Community Justice (Work with Victims, Survivors and Witnesses)

Registered Manager in Health and Social Care

SVQ 3

Care

Caring for Children and Young People

Community Justice (Work with Offending Behaviour)

Community Justice (Work with Victims, Survivors and Witnesses)

Community Work

Promoting Independence

Special Needs Housing

SVQ 2

Care

Community Work

Special Needs Housing

SPA

Care

Caring for Children and Young People

Home Care Practice

Enhanced Home Care Practice

Drivers and Escorts — Care

Supported Employment

Community Service Practice

Social Care

5. notes on entry to jobs and careers

Entry routes

- ◆ **School leavers** — training for care assistant posts for both school-leavers and adult returners is accessed through Further Education. Those who want to qualify as Social Workers can apply for the two year Diploma in Social Work, awarded by the professional body CCETSW, or a degree incorporating this. Students must be at least 22 on completion of the Diploma in Social Work.
- ◆ **Direct entry into employment** — there may be job opportunities as care assistants in the voluntary and private sectors both for young people (over 18) and for adults without relevant training. Employers may provide access to SVQs.
- ◆ **Adult entry** — is common with maturity and experience of life and work is important. There is no upper age limit for entry to Diploma in Social Work programmes. Entry requirements will depend on previous experience.

SVQ access

The most usual route to SVQs is through employment or through Skillseekers programmes.

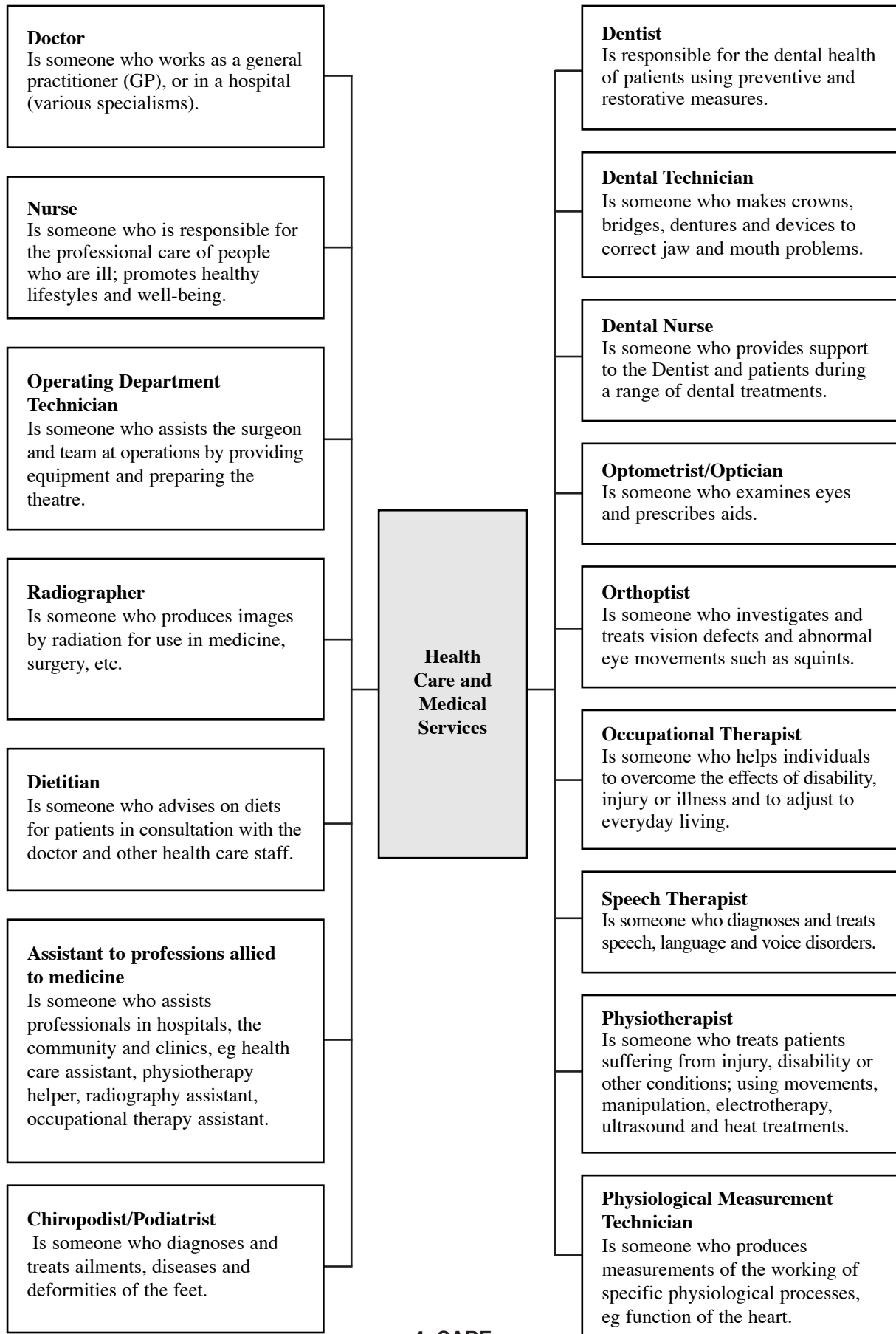
Entry requirements

- ◆ Entry straight from school usually requires no formal qualifications, although as the minimum age is often 18, many young people do a college course or training programme (eg Skillseekers).
- ◆ Entry to an SGA ranges from no formal qualifications to two to five Standard Grades (English and Maths required for some courses).
- ◆ HNCs usually require an appropriate SGA or one to three Highers preferably including English or a Social Subject plus two to three Standard Grades (English and Maths useful).
- ◆ Degrees/Diploma in Social Work usually require three or four Highers including English and two Standard Grades including Maths; or appropriate HNC.

Note — entry requirements vary between institutions. Check prospectuses before applying.

Health Care and Medical Services

2. jobs and careers



Health Care and Medical Services

4. qualifications

HND

Dental Technology

HNC

Counselling

Health Care

Health Care (incorporating SVQ Level III)

Occupational Therapy Support

Pharmaceutical Sciences

Physiological Measurement Dental Technology

PDA

Diploma

Health Promotion

Advanced Certificate

Health Care: Leadership and Management

Supervising and Managing Personal Social Services

Reflexology

Certificate

Care Support Practice

Counselling

SGA

Higher

Care: Health Care

Int 2

Care

GSVQ III

Care: Health Care

GSVQ II

Care

NC Cluster

Caring for Yourself and Others (levels 2 and 3)

National Course

Higher

Care

Care Practice

Mental Health Care

Int 2

Care

Care Issues for Society

Health and Safety in Care Settings

Int 1

Care

SVQ 4

Care: Counselling

SVQ 3

Counselling

Diagnostic Therapeutic Support

Dialysis Support

Operating Department Practice

Oral Health Care: Dental Nursing

Health Care: Operating Department Practice

Health Care — Physiological Measurement: Audiology

Health Care — Physiological Measurement: Neurophysiology

Health Care — Physiological Measurement: Respiratory Physiology

SVQ 2

Care: Blood Donor Support

Care: Operating Department Support

Oral Health Care Support

Health Care: Operating Department Support

Health Care and Medical Services

5. notes on entry to jobs and careers

Entry routes

- ◆ **School leavers**— the professional employment areas, ie medicine, dentistry, nursing, physiotherapy are most commonly accessed through higher education but there are opportunities for progression from FE into HE and professional training. For many professions entry is very competitive.

Training for employment in other health-related areas is provided by further education.

- ◆ **Direct entry into employment** — opportunities for direct entry into employment for school leavers are limited.
- ◆ **Adult entry** — the typical entry route for mature entrants in this field is through further education. Some Access programmes provide entry to nurse training and to training for other health care professionals (eg occupational therapist, physiotherapist, radiographer, dietitian).

SVQ access

SVQs are normally accessed through employment with experience in the relevant Health Care area. School leavers may be able to link into SVQs through Skillseekers programmes.

List of assistants to professions allied to medicine

Health Care Assistant
Occupational Therapy Assistant
Physiotherapist Helper
Podiatry Assistant
Radiography Assistant
Speech Therapy Assistant

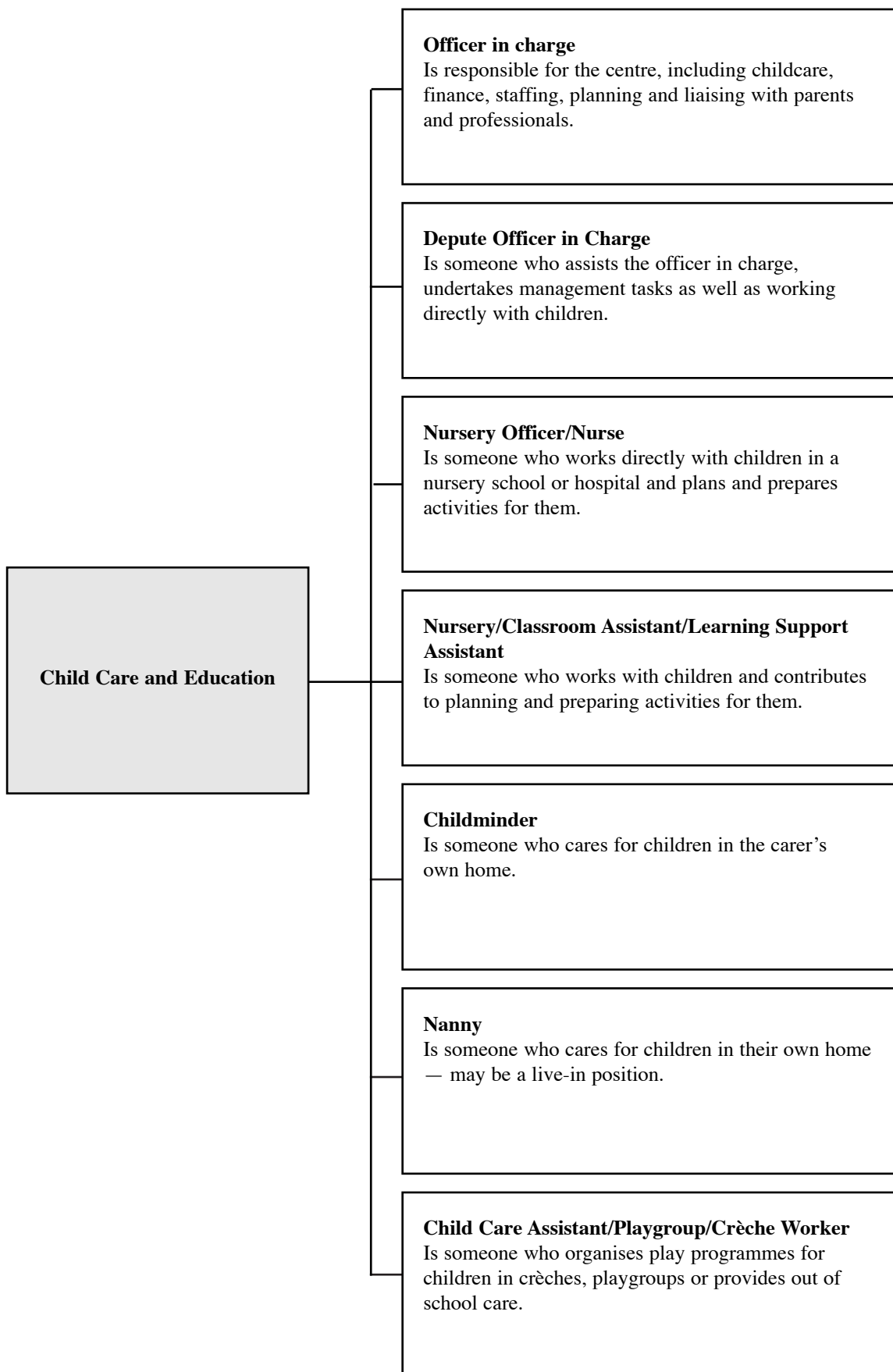
Entry requirements

- ◆ Entry to an SGA ranges from no formal qualifications to two to five Standard Grades (English and Maths or a Science required for some courses).
- ◆ HNCs/HNDs usually require an appropriate SGA or one to three Highers (preferably including English) and two Standard Grades. Higher English and Biology usually required for Dental Technology.
- ◆ Degree courses usually require 3 to 5 Highers and appropriate Standard Grades. Science subjects at Higher are essential for most courses. Entry is extremely competitive for most medical and paramedical courses — A and B grades will usually be necessary at Higher. Appropriate HNC/HND may be accepted for some courses.

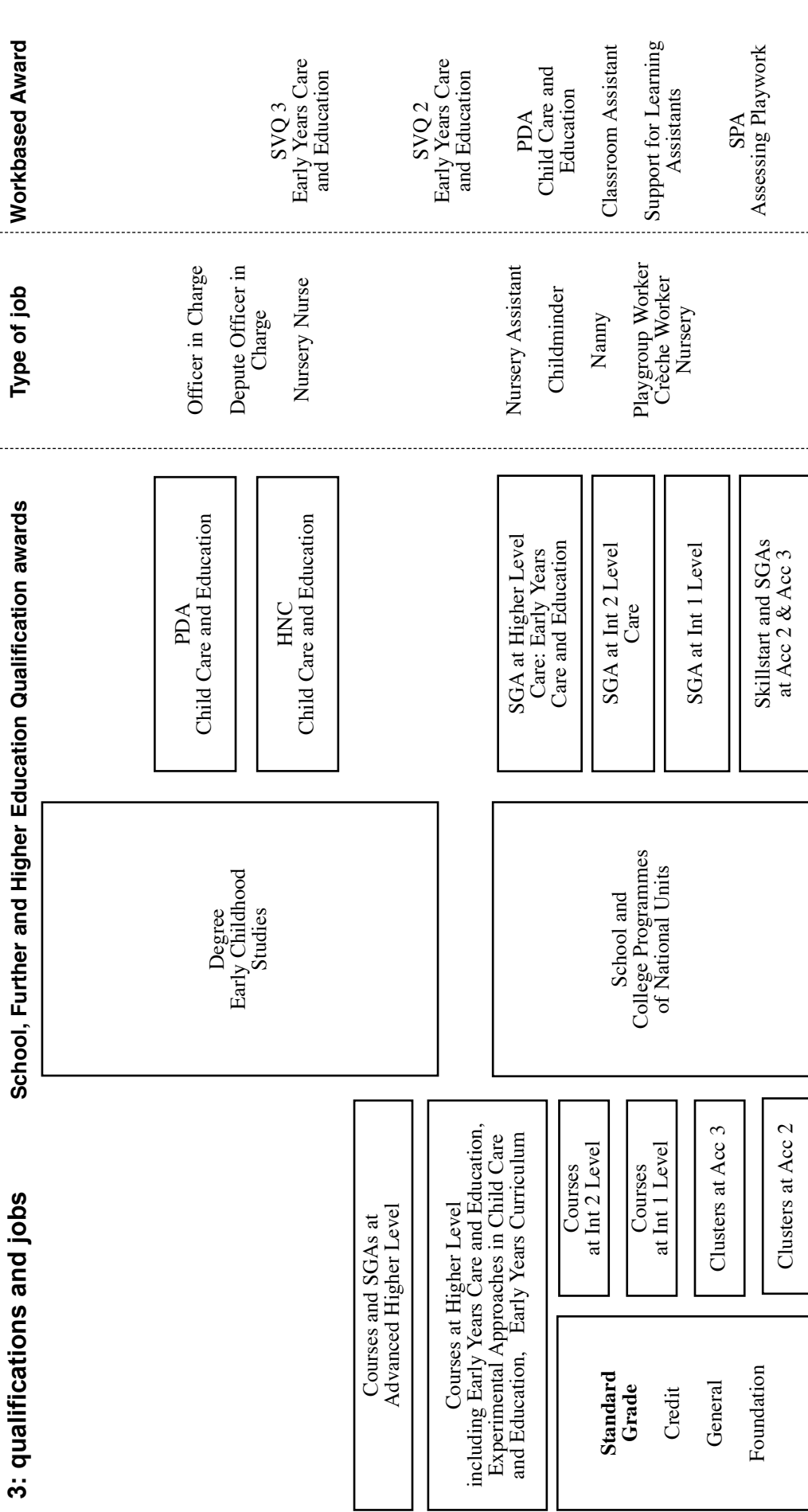
Note — entry requirements vary between institutions. Check prospectuses before applying.

Child Care and Education

2. jobs and careers



Child Care and Education



This diagram outlines the main qualifications in the Child Care and Education area. A full list of all SQA qualifications is on the following pages. People can progress vertically from one qualification to another, eg from a Course at Int 1 to a Course at Int 2. In addition people can progress diagonally from one level of Standard Grade to a higher level of Course or Scottish Group Award (SGA), eg from Standard Grade at General level to Courses or SGAs at Int 2 level.

In this diagram, SVQs and PDAs in the Vocational sector are placed according to current practice and usage in illustrating the relationships and pathways between qualifications, jobs and careers.

Child Care and Education

4. qualifications

HND

Supporting and Managing Learning Needs

HNC

Child Care and Education
Supporting Learning Needs

PDA

Certificate

Child Care and Education
Classroom Assistants
Support for Learning Assistants

SGA

Higher

Care: Early Years and Education

Int 2

Care

GSVQ III

Care: Child Care and Education

Care

GSVQ II

Care

(Programmes of NC Modules in Child Care and Education offered in FE)

National Course

Higher

Care

Early Years Care and Education

Early Years Curriculum

Experimental Approaches to Early Years Care and Education

Int 2

Care: Care Issues for Society

Int 1

Care

SVQ 4

Early Years Care and Education

SVQ 3

Early Years Care and Education

Playwork: Classroom Assistants

SVQ 2

Early Years Care and Education

Playwork: Classroom Assistants

NC Cluster

Caring for Yourself and Others (level II and III)

Child Care and Education

5. notes on entry to jobs and careers

Entry routes

- ♦ **School leavers** — the typical entry route to employment in child care and education for school leavers is through further education. It may be possible for school leavers to find employment in private establishments as helpers. Training as nursery nurses may then be possible through the SVQ programme.
- ♦ **Adult entry** — the typical entry route into jobs and careers in this area is through further education programmes.

Registration with the Scottish Child Care and Education Board (formerly SNNB) is voluntary but may be a pre-requisite for employment by some local authorities. There are two levels of registration.

Pre-registration for nursery assistants; the National Certificate programme of modules for Child Care and Education or an SVQ level 2 plus additional modules are appropriate. For full registration with the SCCEB, candidates must have the HNC in Early Years Care and Education or the SVQ level 3 — both supplemented with additional modules.

SVQ access

SVQs are normally accessed through employment or Skillseekers.

Entry requirements

- ♦ Entry to an SGA ranges from no formal qualifications to two to four Standard Grades (English preferred).
- ♦ HNCs usually require an appropriate SGA or two Highers and Standard Grade English.
- ♦ Degree course usually requires appropriate HNC or SVQ.

Note — entry requirements vary between institutions. Check prospectuses before applying.