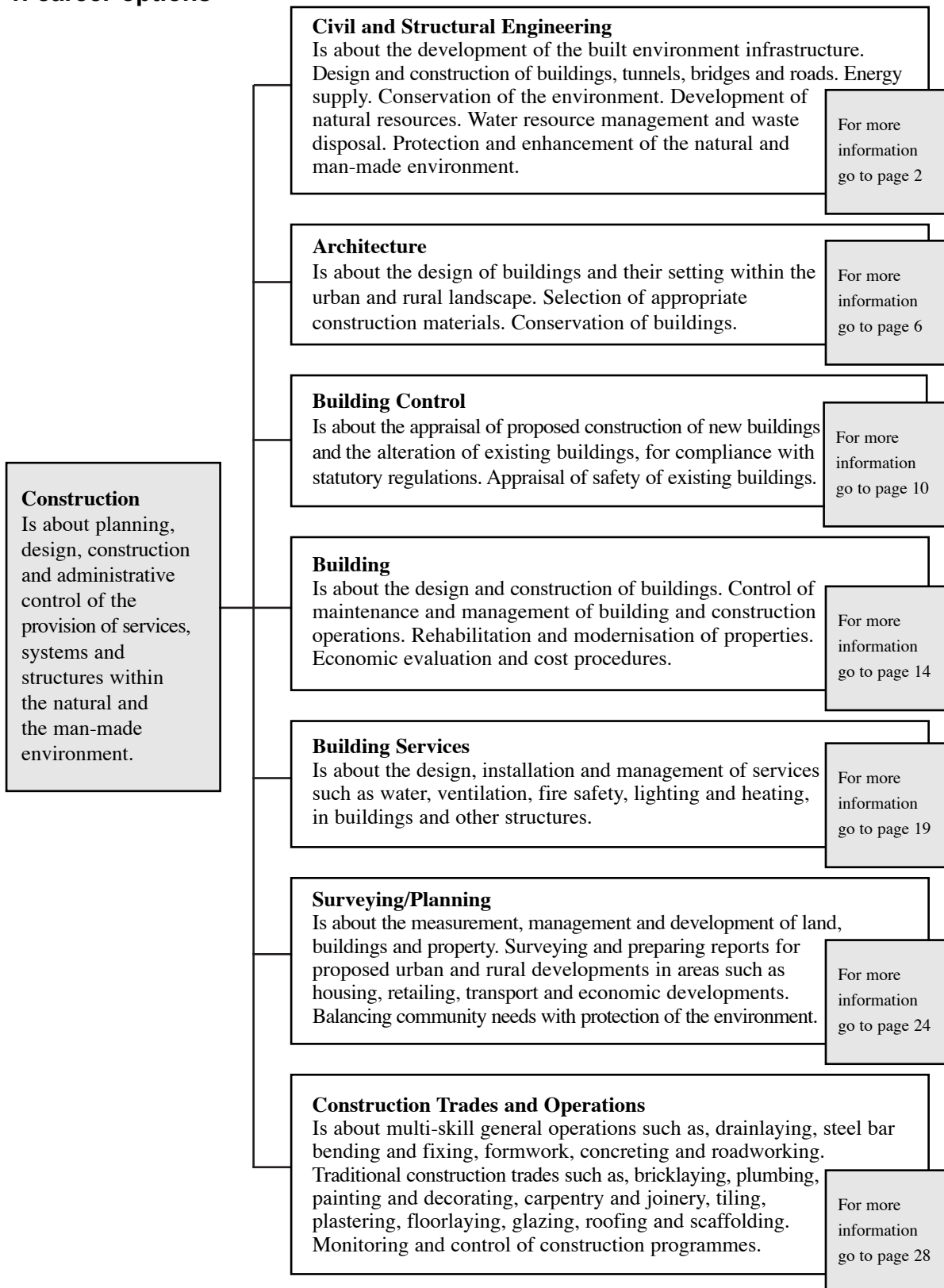


Construction

1. career options

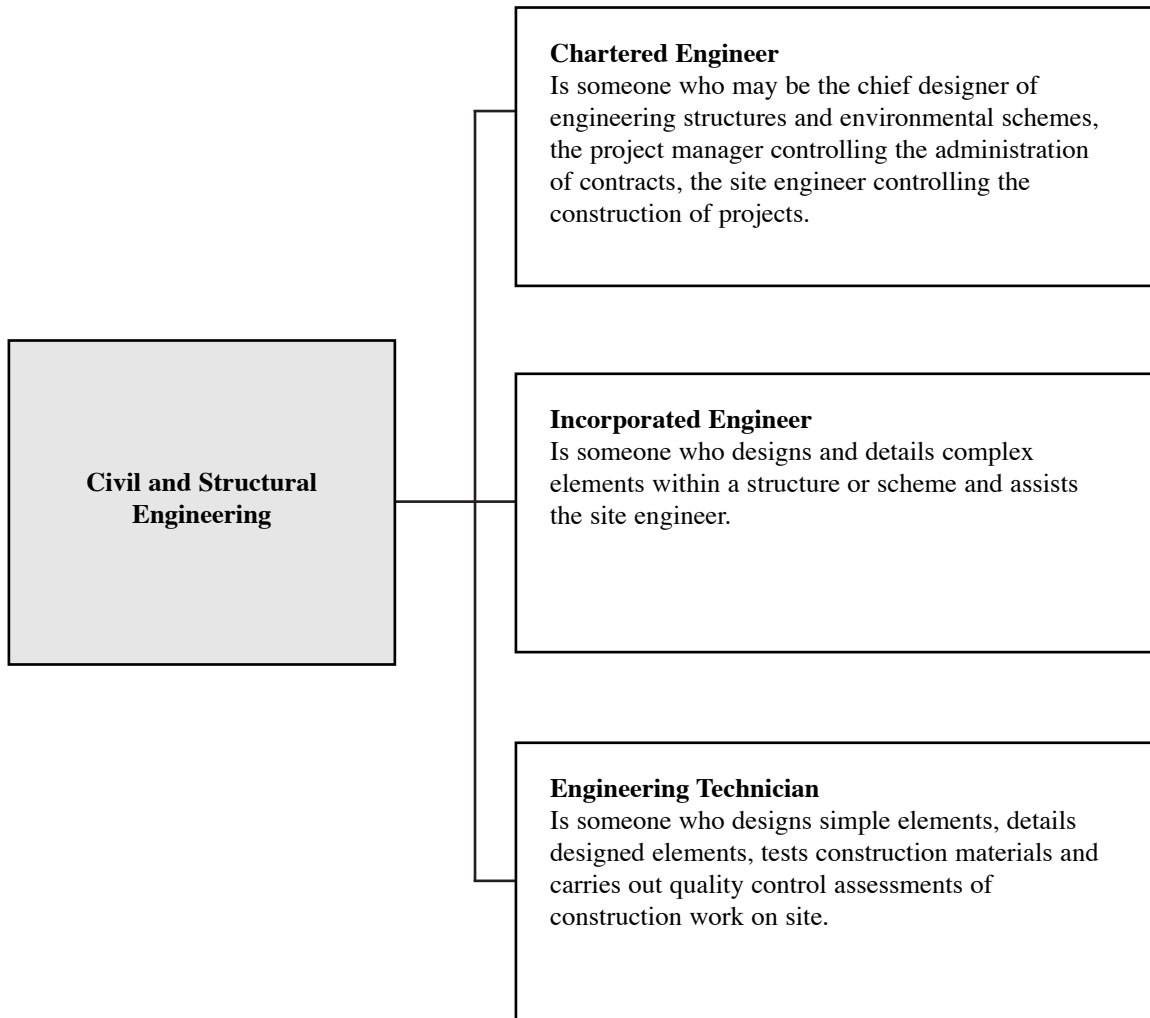


Other career areas related to Construction include:

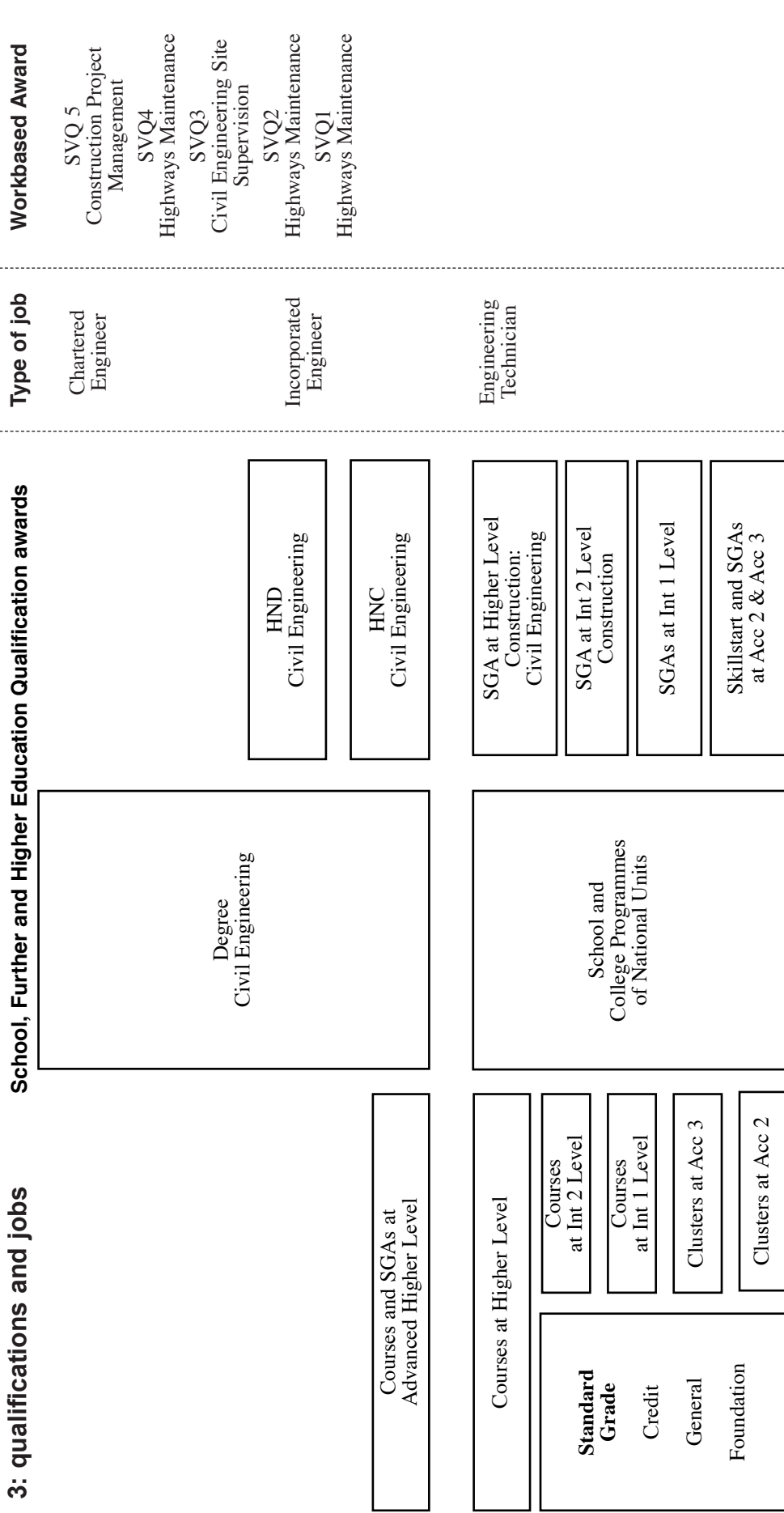
1. Art and Design
10. Engineering
15. Manufacturing

Civil and Structural Engineering

2. jobs and careers



Civil and Structural Engineering



This diagram outlines the main qualifications in the Civil and Structural Engineering area. A full list of all SQA qualifications is on the following pages. People can progress vertically from one qualification to another, eg from a Course at Int 1 to a Course at Int 2. In addition people can progress diagonally from one level of Standard Grade to a higher level of Course or Scottish Group Award (SGA), eg from Standard Grade at General level to Courses or SGAs at Int 2 level.

The GSVQ III provides underpinning knowledge for the SVQ 3. However, as substantial work experience would be required to achieve the SVQ this has been placed at a higher level than GSVQ.

In this diagram, SVQs and PDAs in the Vocational sector are placed according to current practice and usage in illustrating the relationships and pathways between qualifications, jobs and careers.

Civil and Structural Engineering

4. qualifications

HND

Civil Engineering
Water Resources Technology

HNC

Civil Engineering
Water Operations with Management

SGA

Higher

Construction
Construction: Civil Engineering

Int 2

Construction

GSVQ III

Construction
Construction: Built Environment
Construction: Civil Engineering

GSVQ II

Construction

National Course

Adv Higher

Civil Engineering

Higher

Civil Engineering
Construction
Structural Engineering

Int 2

Structures

SVQ 5

Construction Project Management
Transport Planning

SVQ 4

Civil Engineering Site Management
Construction Contracting
Construction Plant and Equipment Management
Engineering Design (Civil and Structural)
Highways Maintenance
Traffic Management and Systems Engineering

SVQ 3

Civil Engineering Site Supervision
Construction Contracting
Highways Maintenance
Construction Plant and Equipment Supervision

SVQ 2

Highways Maintenance

SVQ 1

Highways Maintenance

Civil and Structural Engineering

5. notes on entry to jobs and careers

Entry Routes

- ♦ **School leavers** — with appropriate Higher Grades, will usually enter at HND or Degree level. School leavers, with appropriate Standard Grades, will usually enter at level III of GSVQ Construction. School leavers may enter employment directly, with Standard Grades, and progress through GSVQ and HNC, on a part-time route.
- ♦ **Adult entry** — adults seeking employment in this occupational area would usually undertake an Access Programme to enable them to enter a full-time HND or Degree course.

A Chartered Engineer requires a Degree and Post-Graduate practical experience.

SVQ access

SVQs would normally be undertaken whilst in employment during or after an HNC, HND or Degree.

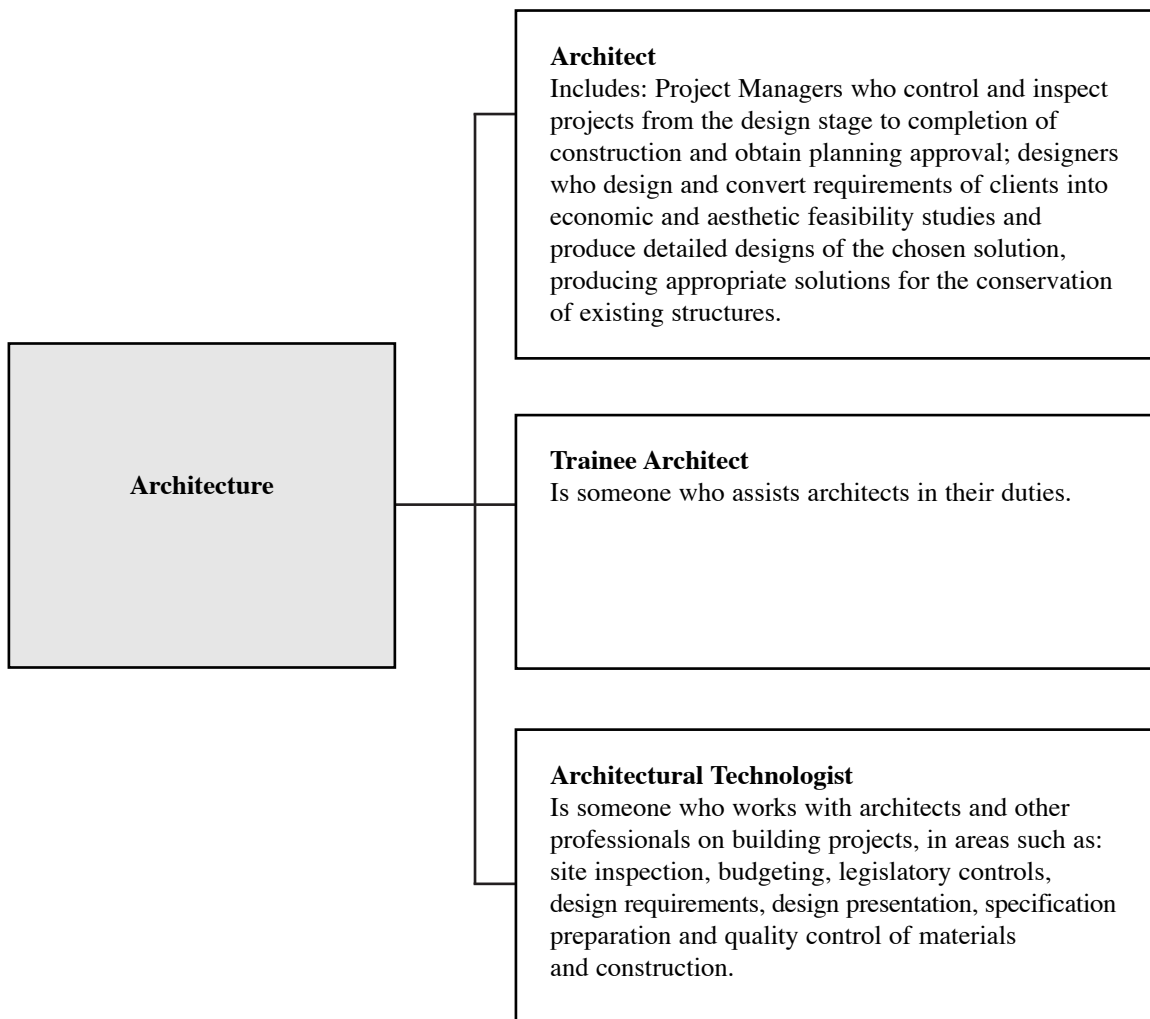
Entry requirements

- ♦ Entry to an SGA ranges from no formal qualifications to three or four Standard Grades (Maths, English and a Science are required for some courses; Craft and Design is also useful.)
- ♦ HNCs/HNDs usually require an appropriate SGA or one to three Highers (Maths and Physics preferred) and appropriate Standard Grades (English, Maths and Physics or Technological Studies are usually required).
- ♦ Degree courses usually require three or four Highers including Maths and a Science (Physics or Technological Studies preferred) plus appropriate Standard Grades; or appropriate HNC/HND.

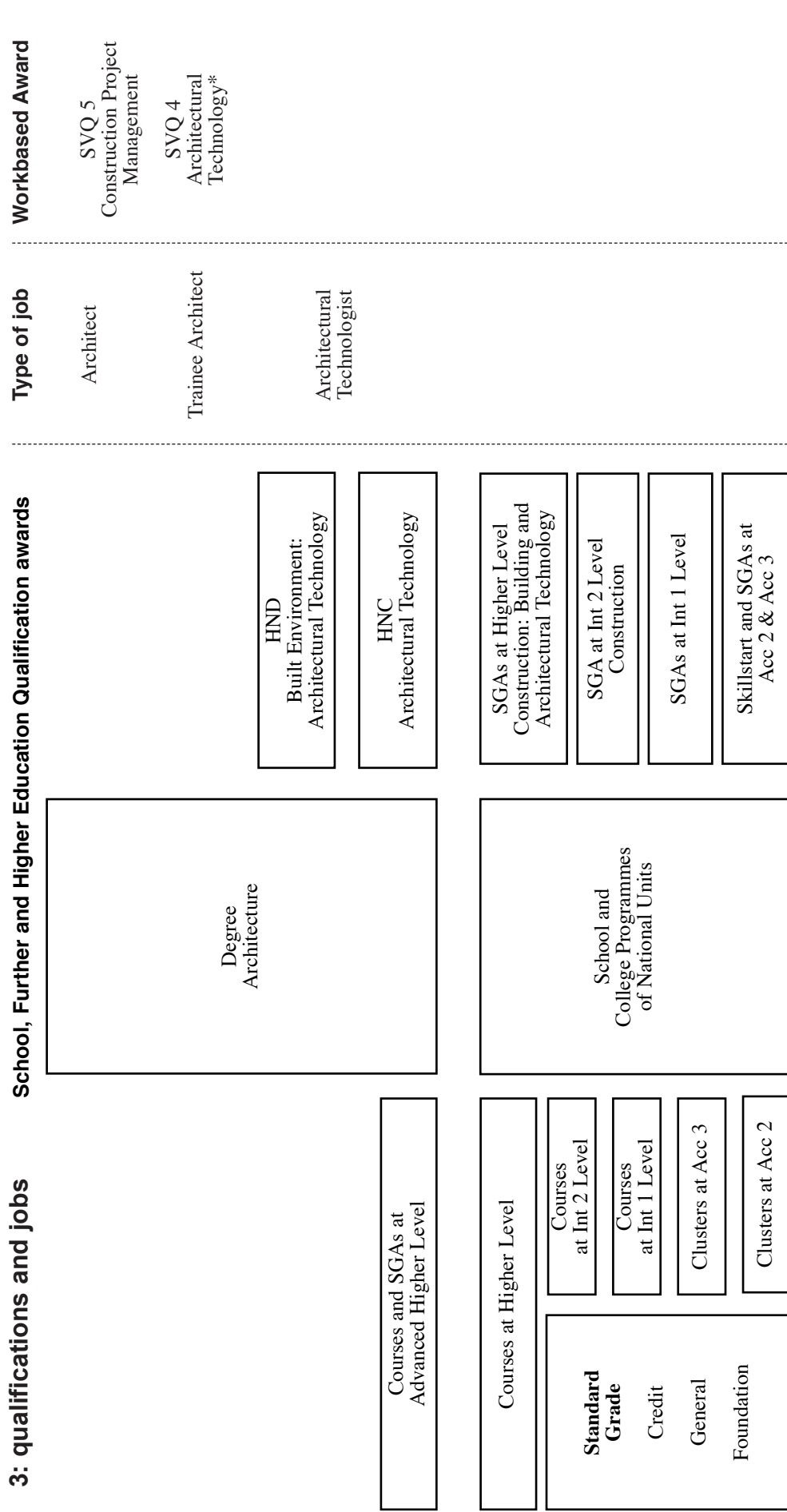
Note — entry requirements vary between institutions. Check prospectuses before applying.

Architecture

2. jobs and careers



Architecture



This diagram outlines the main qualifications in the Architecture area. A full list of all SQA qualifications is on the following pages. People can progress vertically from one qualification to another, eg from a Course at Int 1 to a Course at Int 2. In addition people can progress diagonally from one level of Standard Grade to a higher level of Course or Scottish Group Award (SGA), eg from Standard Grade at General level to Courses or SGAs at Int 2 level.

*SVQs under development

In this diagram, SVQs and PDAs in the Vocational sector are placed according to current practice and usage in illustrating the relationships and pathways between qualifications, jobs and careers.

Architecture

4. qualifications

HND

Architectural Conservation
Architectural Technology
Architectural Technology with CAD
Built Environment: Architectural Technology

HNC

Architectural Conservation
Architectural Technology
Architectural Technology with CAD

SGA

Higher

Construction: Building and Architectural Technology

Int 2

Construction

GSVQ III

Construction
Construction: Built Environment

GSVQ II

Construction

National Course

Adv Higher

DET Construction: Building and Architectural Technology

Higher

DET Construction: Building and Architectural Technology

SVQ 5

Conservation Advice
Construction Project Management

SVQ 4

Architectural Technology

Architecture

5. notes on entry to jobs and careers

Entry Routes

- ◆ **School leavers** — with appropriate Higher Grades, will usually enter at HND or Degree level. School leavers, with appropriate Standard Grades, will usually enter at level III of GSVQ Construction. School leavers may enter employment directly, with Standard Grades, and progress through GSVQ and HNC, on a part-time route.
- ◆ **Adult entry** — adults seeking employment in this occupational area would usually undertake an Access Programme to enable them to enter a full-time HND or Degree course.

Qualification as an architect (registration with the Architect Registration Council) usually requires completion of a first degree followed by practical experience and further academic study.

SVQ access

At present, there are few relevant SVQs specifically in the Architecture area, although one is pending at level 4 in Architectural Technology. It would be expected that any existing or proposed SVQ, in this area would be undertaken whilst in employment after completing an HNC, HND or degree.

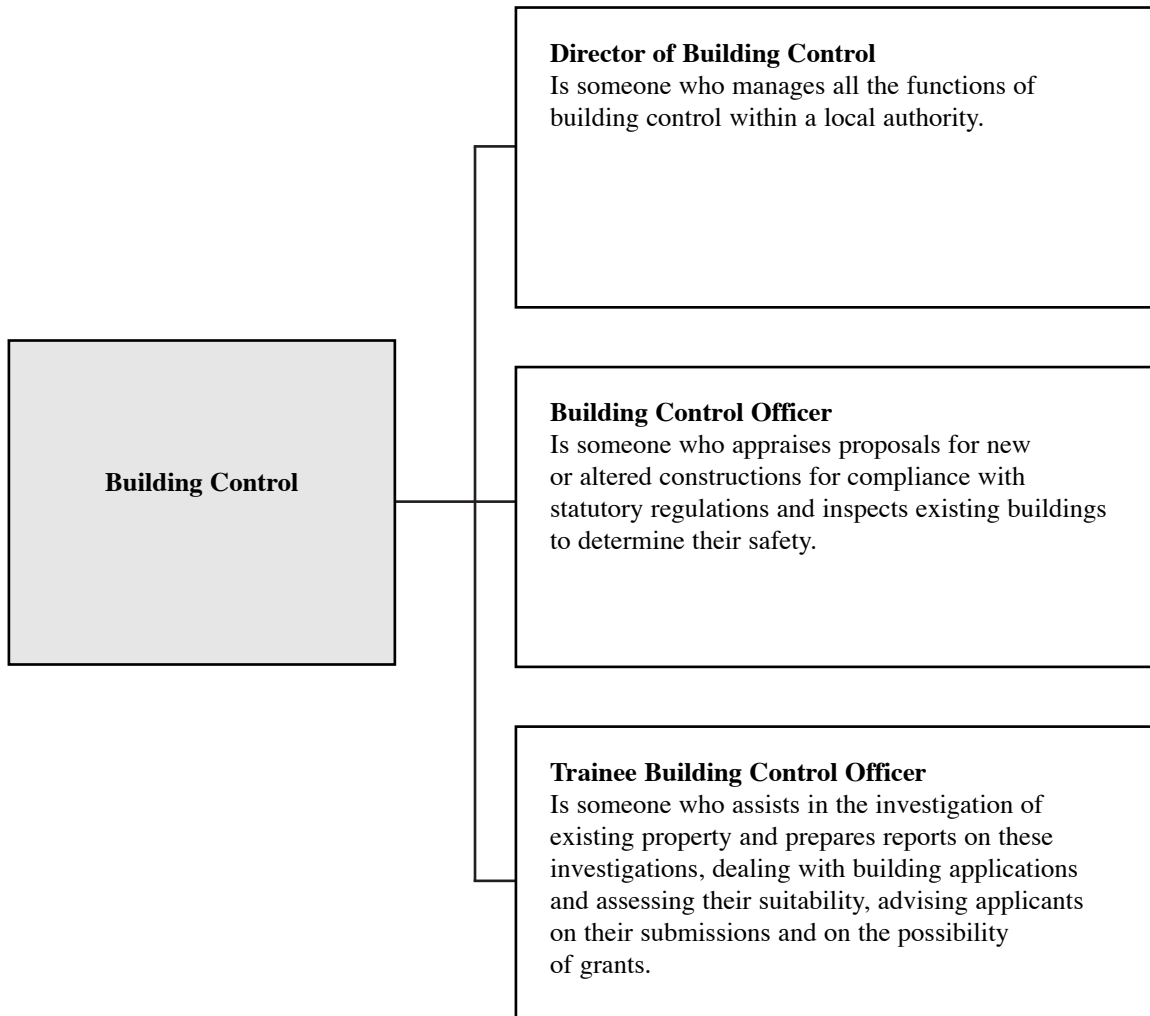
Entry requirements

- ◆ Entry to an SGA ranges from no formal qualifications to three or four Standard Grades (Maths, English and a Science — preferably Physics or Technological Studies are required for some courses).
- ◆ HNCs/HNDs usually require an appropriate SGA or two or three Highers and appropriate Standard Grades (English, Maths and a Science).
- ◆ Degree courses usually require three or four Highers including English, Maths and/or Physics (or Technological Studies). Art Design required for some courses (Graphic Communication may be acceptable), or a portfolio of art work; or appropriate HNC/HND.

Note — entry requirements vary between institutions. Check prospectuses before applying.

Building Control

2. jobs and careers



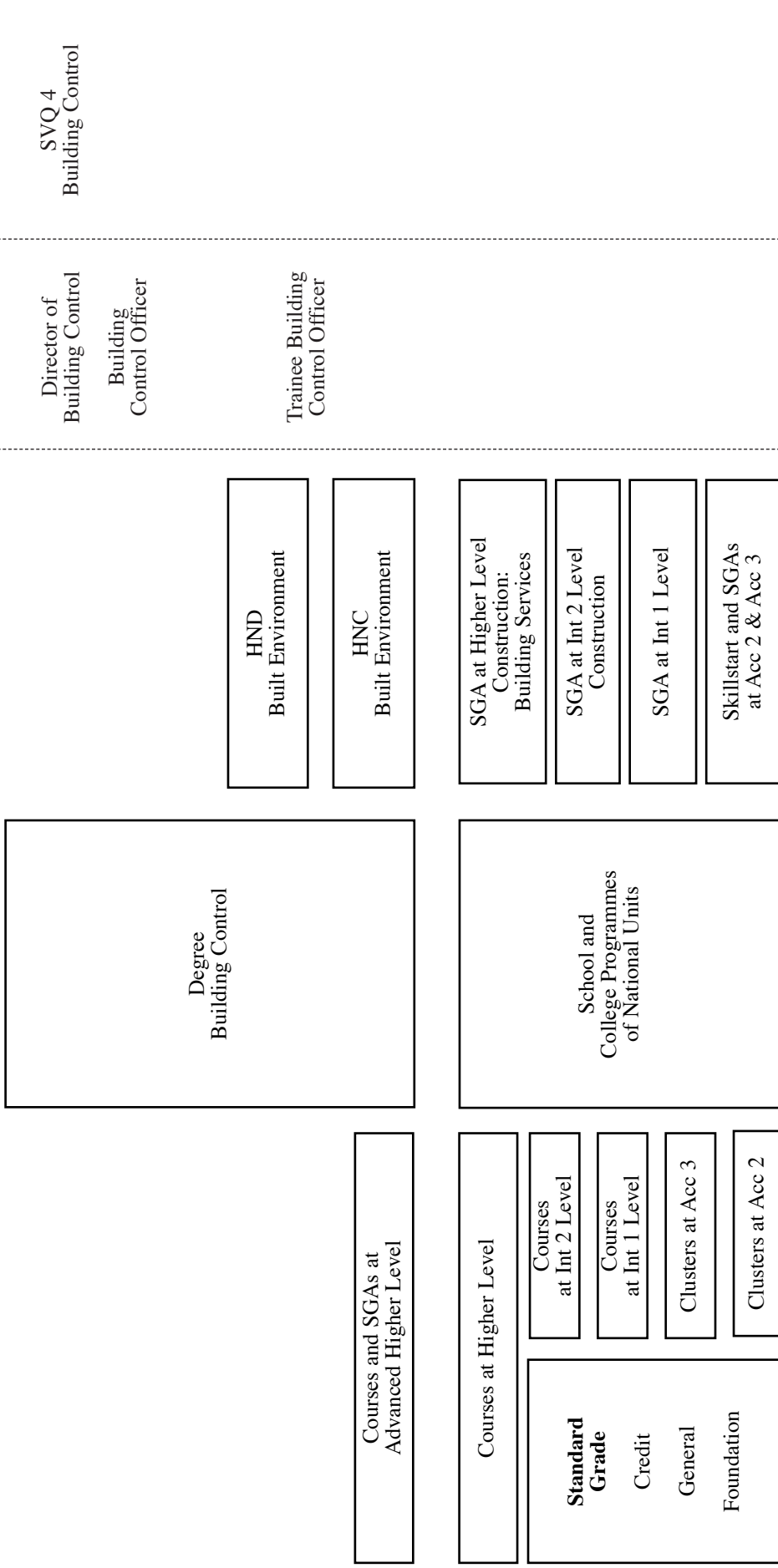
Building Control

3: qualifications and jobs

School, Further and Higher Education Qualification awards

Workbased Award

Type of job



This diagram outlines the main qualifications in the Building Control area. A full list of all SQA qualifications is on the following pages. People can progress vertically from one qualification to another, eg from a Course at Int 1 to a Course at Int 2. In addition people can progress diagonally from one level of Standard Grade to a higher level of Course or Scottish Group Award (SGA), eg from Standard Grade at General level to Courses or SGAs at Int 2 level.

In this diagram, SVQs and PDAs in the Vocational sector are placed according to current practice and usage in illustrating the relationships and pathways between qualifications, jobs and careers.

Building Control

4. qualifications

HND

Building Control

Built Environment

Built Environment: Building Control

Built Environment: Building Inspection and Supervision

Built Environment: General

HNC

Building Control

SGA

Higher

Construction

Construction: Building Services

Int 2

Construction

GSVQ III

Construction

Construction: Built Environment

GSVQ II

Construction

SVQ 4

Building Control

Building Control

5. notes on entry to jobs and careers

Entry routes

- ◆ **School leavers** — with appropriate Higher Grades, will usually enter at HND or Degree level. School leavers, with appropriate Standard Grades, will usually enter at level III of GSVQ Construction.
- ◆ **Direct entry into employment** — school leavers may enter employment directly, with Standard Grades, and progress through GSVQ and HNC, on a part-time route.
- ◆ **Adult entry** — adults seeking employment in this occupational area would usually undertake an Access Programme to enable them to enter a full-time HND or Degree course.

SVQ access

At present, there are few relevant SVQs specifically in the Building Control area. It would be expected that any existing or proposed SVQ, in this area would be undertaken whilst in employment after completing an HNC, HND or degree.

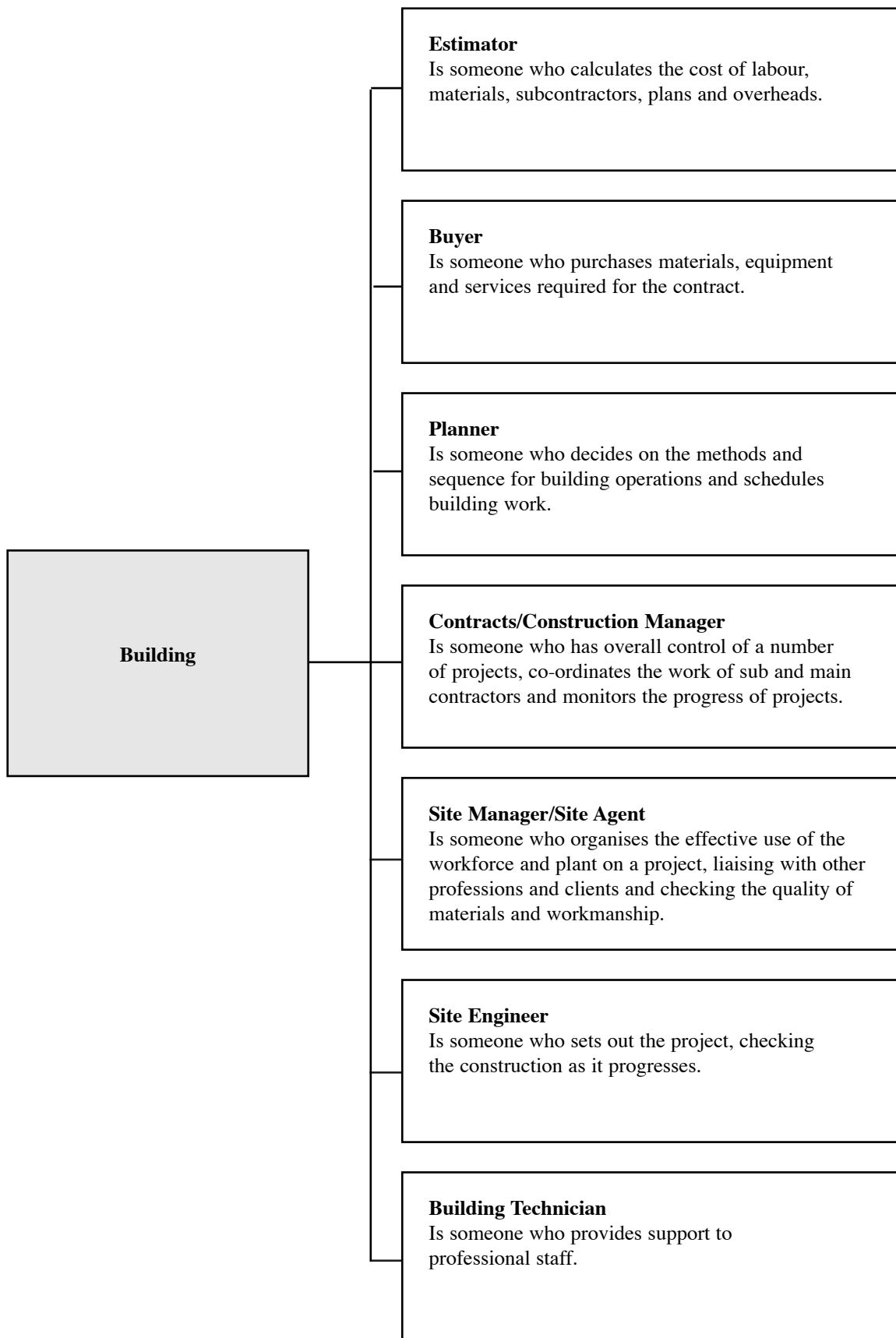
Entry requirements

- ◆ Entry to an SGA ranges from no formal qualifications to three or four Standard grades (English, Maths and a Science — preferably Physics or Technological Studies are required for some courses).
- ◆ HNCs/HNDs usually require an appropriate SGA or two Highers and appropriate Standard Grades (English, Maths and a Science preferred).
- ◆ Degree courses usually require three or four Highers (English, Maths and Physics or Technological Studies preferred), plus Standard Grades (English, Maths and Physics or Technological Studies). Geography, History and Modern Studies are also useful; or appropriate HNC/HND.

Note — entry requirements vary between institutions. Check prospectuses before applying.

Building

2. jobs and careers

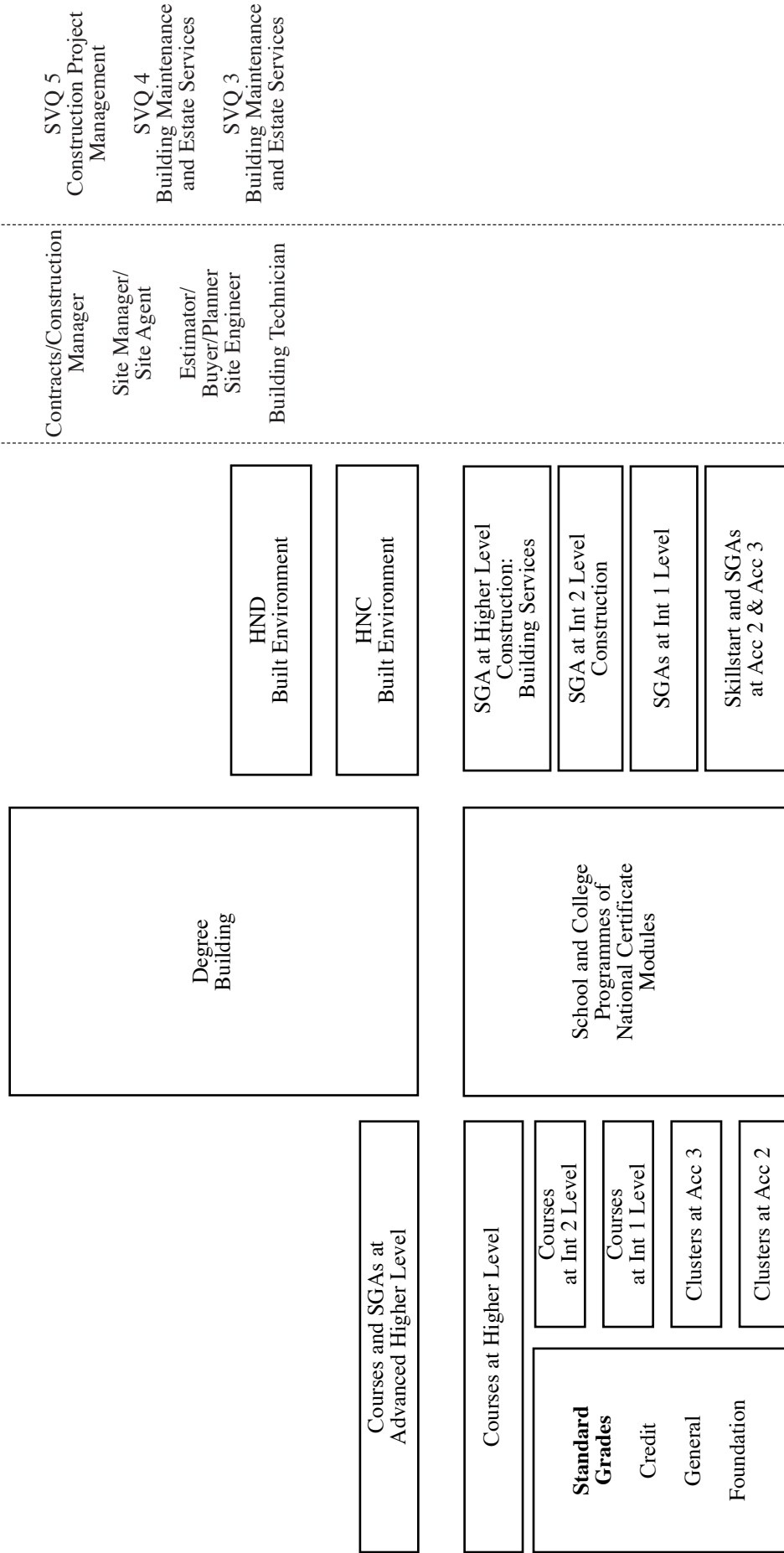


Building

3: qualifications and jobs

School, Further and Higher Education Qualification awards

Workbased Award



This diagram outlines the main qualifications in the Building area. A full list of all SQA qualifications is on the following pages. People can progress vertically from one qualification to another, eg from a Course at Int 1 to a Course at Int 2. In addition people can progress diagonally from one level of Standard Grade to a higher level of Course or Scottish Group Award (SGA), eg from Standard Grade at General level to Courses or SGAs at Int 2 level.

The GSVQ III provides underpinning knowledge for the SVQ 3. However, as substantial work experience would be required to achieve the SVQ this has been placed at a higher level than GSVQ.

In this diagram, SVQs and PDAs in the Vocational sector are placed according to current practice and usage in illustrating the relationships and pathways between qualifications, jobs and careers.

Building

4. qualifications

HND

Building Surveying
Built Environment: Building Maintenance Management
Built Environment: Construction Management
Built Environment: General
Construction Management

HNC

Building Inspection and Supervision
Construction
Construction Management
Construction Practice
Contracting Management
General Practice Surveying

SGA

Higher

Construction
Construction: Building Services

Int 2

Construction

GSVQ III

Construction
Construction: Built Environment

GSVQ II

Construction

National Course

Adv Higher

Building and Architectural Technology

Higher

Building and Architectural Technology

SVQ 5

Construction Project Management

SVQ 4

Building Maintenance and Estate Services

Building Site Management

Construction Contracting

Property Management

Valuation

SVQ 3

Building Maintenance and Estates Services

Building Site Supervision

Construction Contracting

Site Inspection

Building

5. notes on entry to jobs and careers

Entry routes

- ◆ **School leavers** — with appropriate Higher Grades, will usually enter at HND or Degree level. School leavers, with appropriate Standard Grades, will usually enter at level II of GSVQ (Construction).
- ◆ **Direct entry into employment** — school leavers may enter employment directly, with Standard Grades, and progress through GSVQ and HNC, on a part-time route.
- ◆ **Adult entry** — adults seeking employment in this occupational area would usually undertake an Access Programme to enable them to enter a full-time HND or Degree course.

A Degree or HND followed by practical experience is normally required for membership of the Chartered Institute of Builders.

SVQ access

School leavers may access SVQs at levels 2 and 3 through training schemes such as Skillseekers or Modern Apprenticeships. However many SVQs will be undertaken whilst in employment during or after an HNC, HND or Degree.

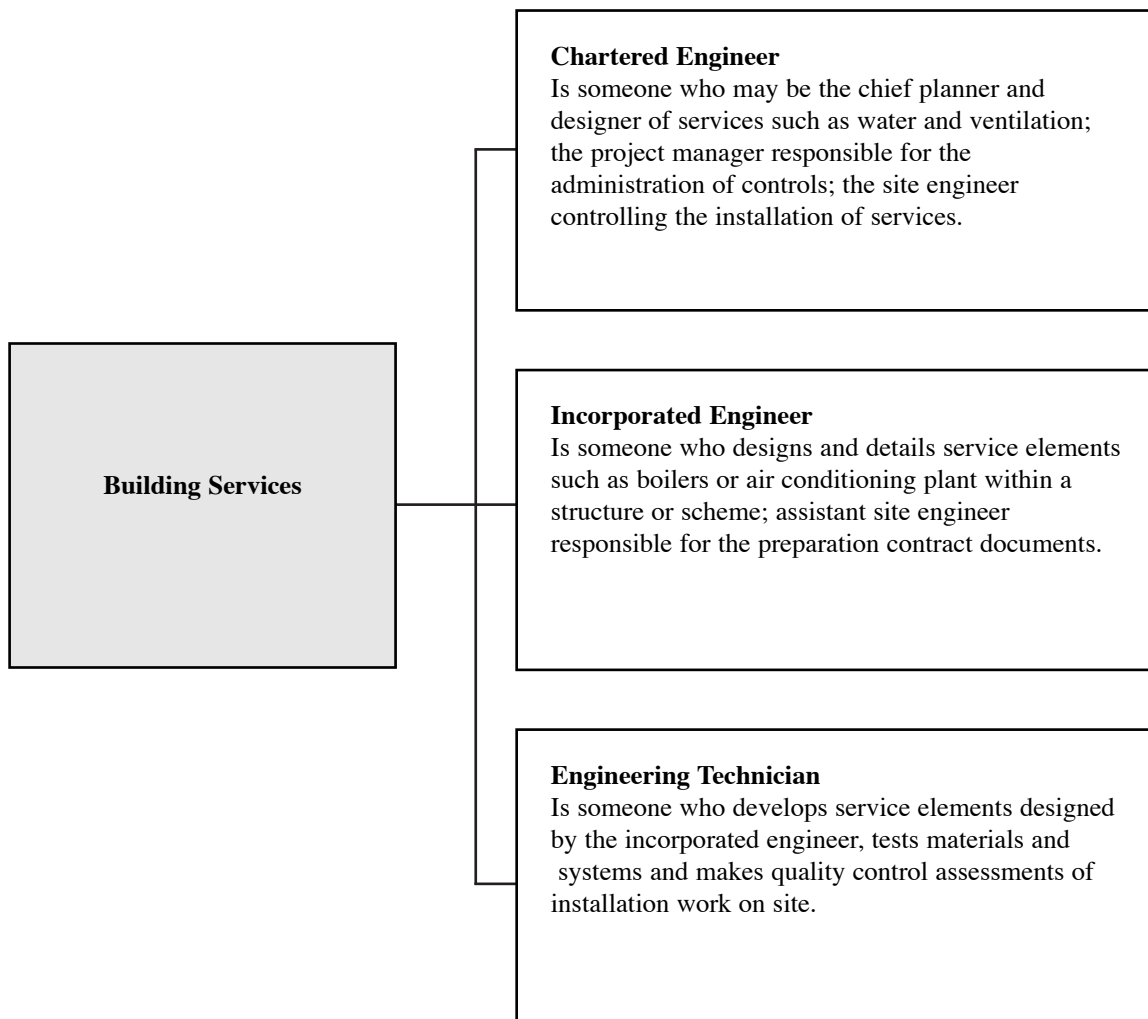
Entry requirements

- ◆ Entry to an SGA ranges from no formal qualifications to three or four Standard Grades (English, Maths and a Science preferred).
- ◆ HNCs/HNDs usually require an appropriate SGA or two Highers, and appropriate Standard Grades (English, Maths and a Science); or appropriate HNC/HND.
- ◆ Degree courses usually require three or four Highers (preferably including English and Maths) and appropriate Standards Grades (English, Maths and a Science); or appropriate HNC/HND.

Note — entry requirements vary between institutions. Check prospectuses before applying.

Building Services

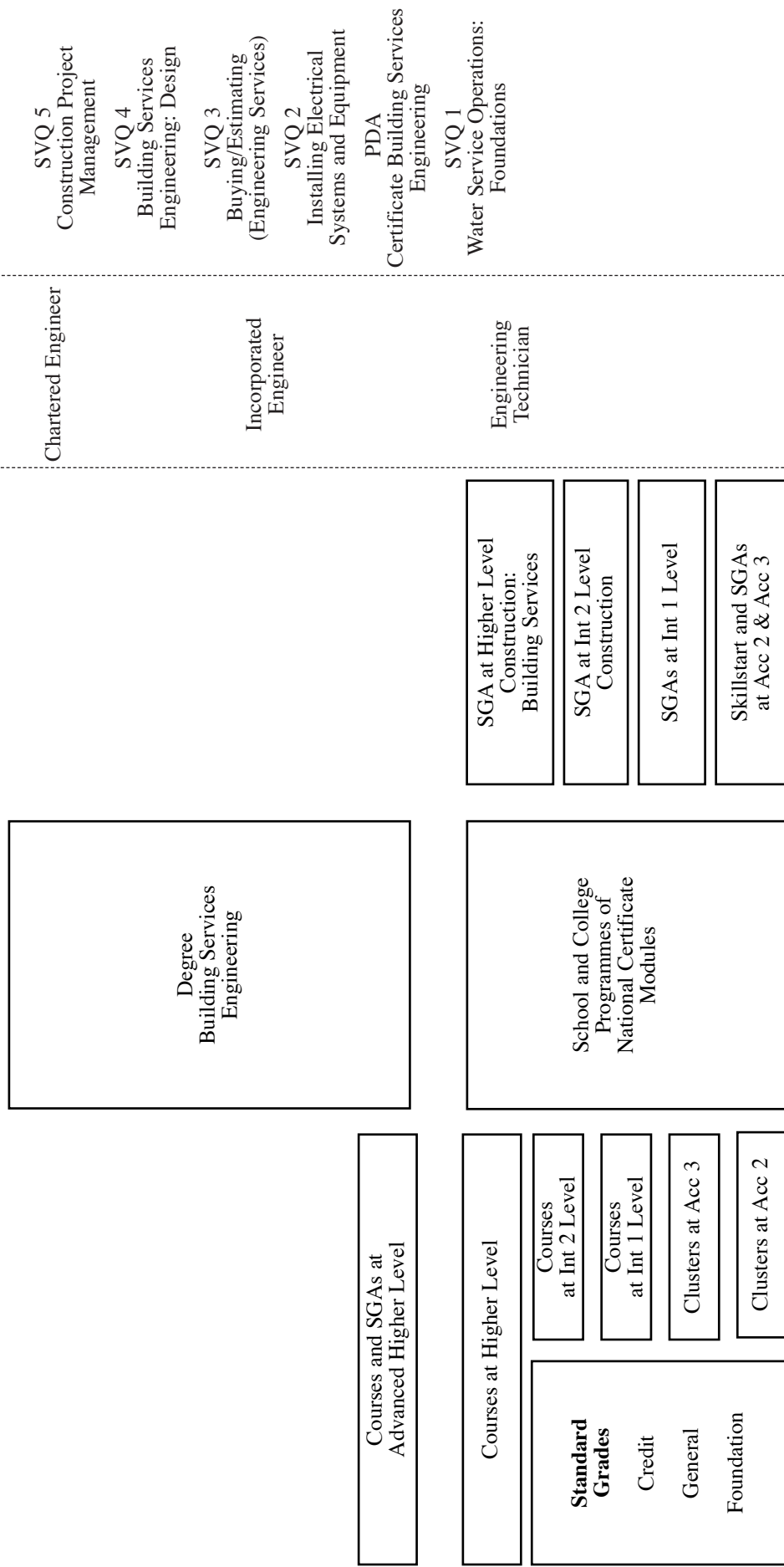
2. jobs and careers



Building Services

3: qualifications and jobs

School, Further and Higher Education Qualification awards



This diagram outlines the main qualifications in the Building Services area. A full list of all SQA qualifications is on the following pages. People can progress vertically from one qualification to another, eg from a Course at Int 1 to a Course at Int 2. In addition people can progress diagonally from one level of Standard Grade to a higher level of Course or Scottish Group Award (SGA), eg from Standard Grade at General level to Courses or SGAs at Int 2 level.

The GSVQ III provides underpinning knowledge for the SVQ 3. However, as substantial work experience would be required to achieve the SVQ this has been placed at a higher level than GSVQ.

In this diagram, SVQs and PDAs in the Vocational sector are placed according to current practice and usage in illustrating the relationships and pathways between qualifications, jobs and careers.

Building Services

4. qualifications

HND

Built Environment: General

HNC

Building Services Plant Engineering
Heating, Ventilation and Air Conditioning

PDA

Certificate

Building Services Engineering

SGA

Higher

Construction: Building Services

Int 2

Construction

GSVQ III

Construction

Construction: Building Services

GSVQ II

Construction

National Course

Higher

Building Services

SVQ 5

Construction Project Management

SVQ 4

Building Services Engineering: Design
Building Services Engineering: Site Management

SVQ 3

Buying/Estimating (Engineering Services)

Installing and Commissioning Electrical Systems and Equipment

Mechanical Engineering Services — Heating and Ventilating: Ductwork Installation

Mechanical Engineering Services — Heating and Ventilating Installation

Mechanical Engineering Services — Heating and Ventilating: Service and Maintenance: Rectification of Systems

Mechanical Engineering Services: Plumbing

Supervision (Engineering Services)

Surveying (Engineering Services)

SVQ 2

Installing Electrical Systems and Equipment

Mechanical Engineering Services — Heating and Ventilating Installation: Industrial and Commercial

Mechanical Engineering Services — Heating and Ventilation Installation: Domestic

Mechanical Engineering Services — Plumbing

Mechanical Engineering Services — Service and Maintenance of System Components

Mechanical Engineering Services — Thermal Insulation

Water Distribution: Mains Laying

Water Distribution: Service Laying

Water Service Operations: Distribution Control

Building Services

5. notes on entry to jobs and careers

Entry routes

- ◆ **School leavers** — with appropriate Higher Grades, will usually enter at HND or Degree level. School leavers, with appropriate Standard Grades, will usually enter at level III of GSVQ Construction.
- ◆ **Direct entry into employment** — school leavers may enter employment directly, with Standard Grades, and progress through GSVQ and HNC, on a part-time route.
- ◆ **Adult entry** — adults seeking employment in this occupational area would usually undertake an Access Programme to enable them to enter a full-time HND or degree course.

Membership of the Chartered Institute of Building Services Engineers requires an HND or Degree followed by practical experience.

SVQ access

School leavers may access SVQs at levels 2 and 3 through training schemes such as Skillseekers or Modern Apprenticeships. However many SVQs will be undertaken whilst in employment during or after an HNC, HND or degree.

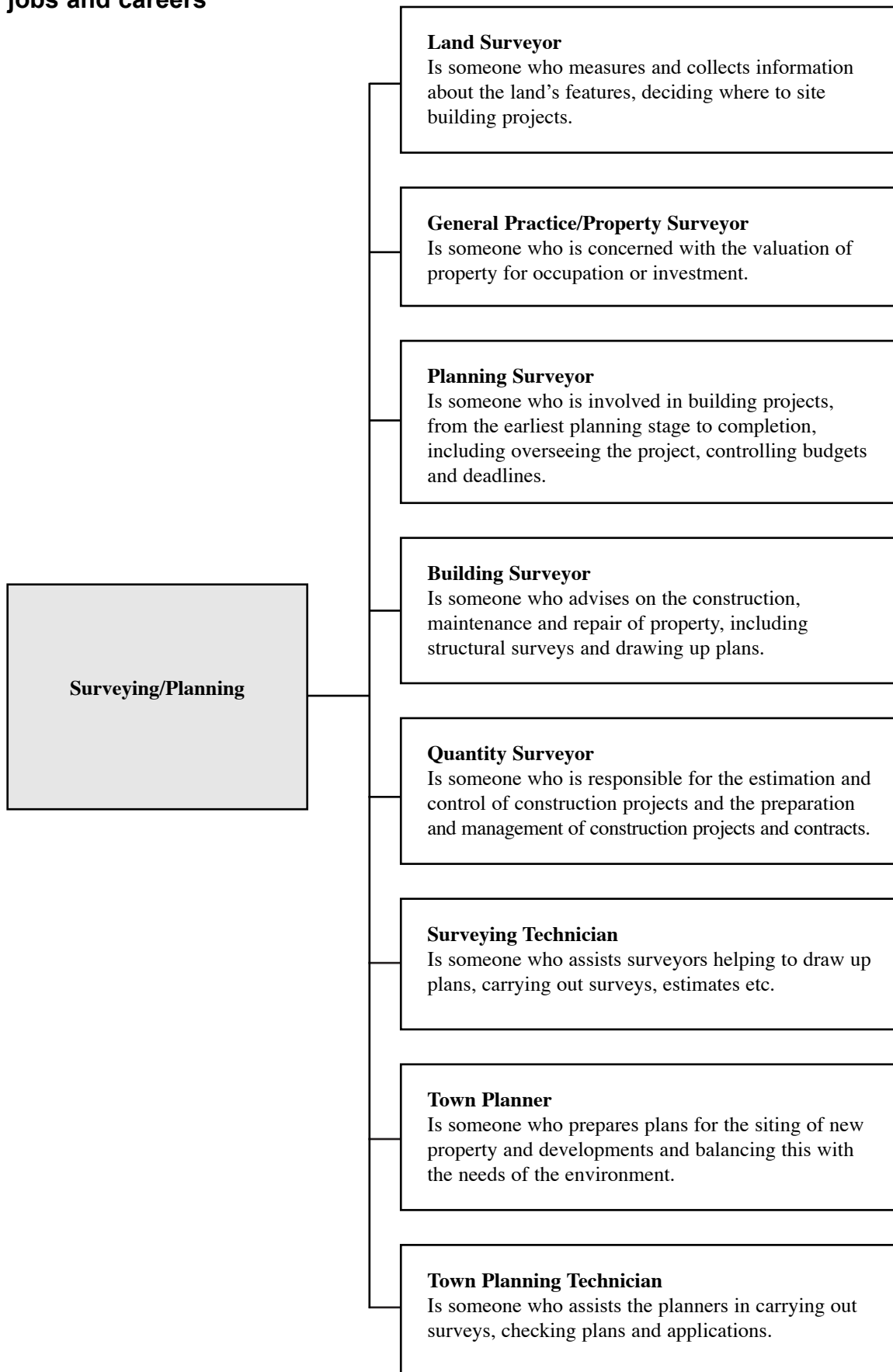
Entry requirements

- ◆ Entry to an SGA ranges from no formal qualifications to three or four Standard Grades (English, Maths and a Science required for some courses).
- ◆ HNCs/HNDs usually require an appropriate SGA or one or two Highers (Physics or Technological Studies preferred) and appropriate Standard Grades (English, Maths and a Science).
- ◆ Degree courses usually require three or four Highers (Maths and a Science preferred) and Standard Grades (English and Maths); or appropriate HNC/HND.

Note — entry requirements vary between institutions. Check prospectuses before applying.

Surveying/Planning

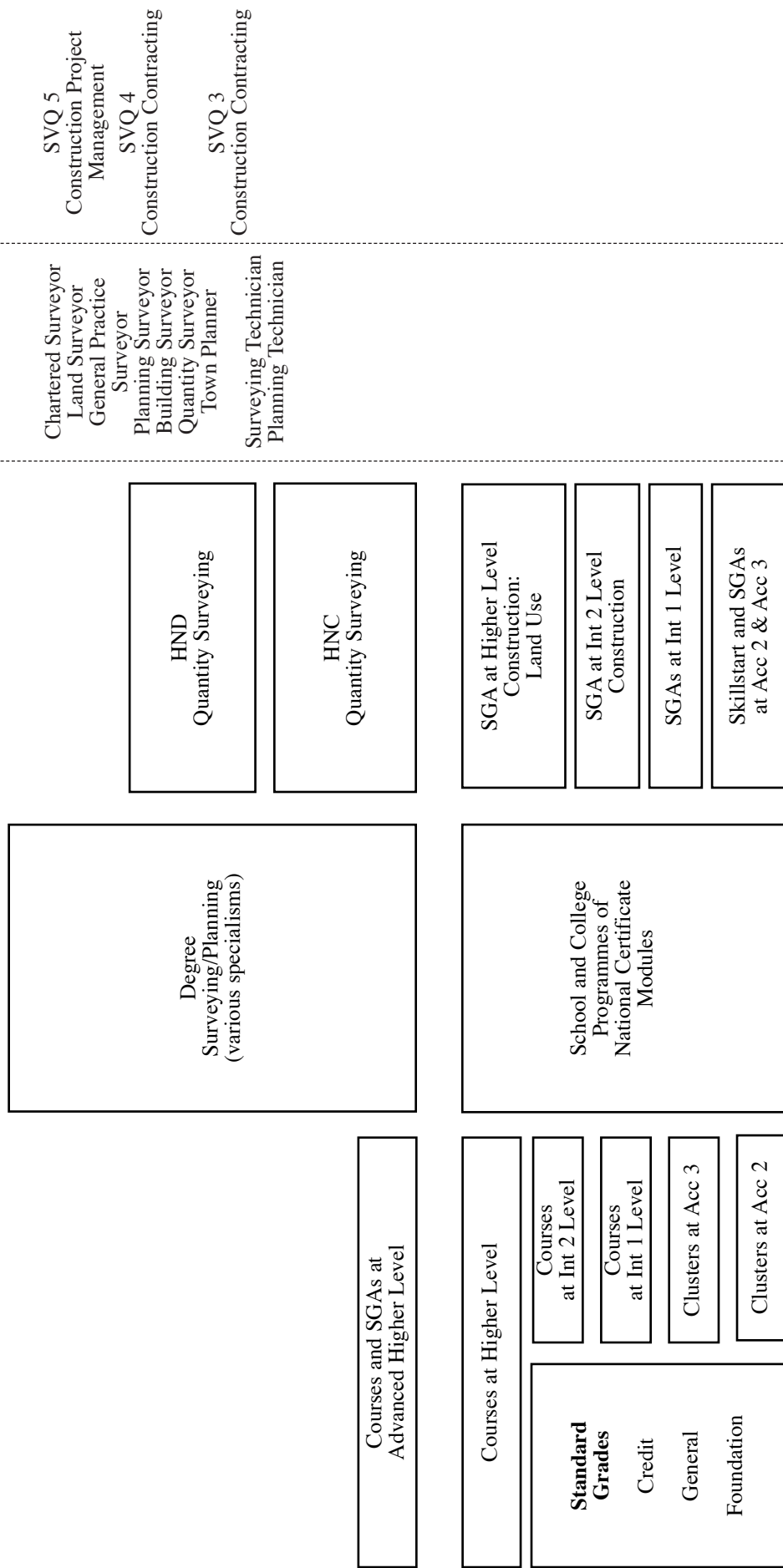
2. jobs and careers



Surveying/Planning

3: qualifications and jobs

School, Further and Higher Education Qualification awards



This diagram outlines the main qualifications in the Surveying and Planning area. A full list of all SQA qualifications is on the following pages. People can progress vertically from one qualification to another, eg from a Course at Int 1 to a Course at Int 2. In addition people can progress diagonally from one level of Standard Grade to a higher level of Course or Scottish Group Award (SGA), eg from Standard Grade at General level to Courses or SGAs at Int 2 level.

The GSVQ III provides underpinning knowledge for the SVQ 3. However, as substantial work experience would be required to achieve the SVQ this has been placed at a higher level than GSVQ.

In this diagram, SVQs and PDAs in the Vocational sector are placed according to current practice and usage in illustrating the relationships and pathways between qualifications, jobs and careers.

Surveying/Planning

4. qualifications

HND

Built Environment: Quantity Surveying
Landscape Design and Construction Management
Managing Urban Environments
Planning and General Practice Surveying
Quantity Surveying

HNC

Landscape Design and Construction Technology
Planning
Quantity Surveying
Topographic Studies

SGA

Higher

Construction: Land Use

Int 2

Construction

GSVQ III

Construction: Land Use
Construction
Construction: Built Environment

GSVQ II

Construction

National Course

Higher

Land Use (Built Environment)
Quantity Surveying

SVQ 5

Construction Project Management

SVQ 4

Construction Contracting
Town Planning Support

SVQ 3

Construction Contracting
Town Planning Support

Surveying/Planning

5. notes on entry to jobs and careers

Entry routes

- ◆ **School leavers** — with appropriate Higher Grades, will usually enter at HND or Degree level. School leavers, with appropriate Standard Grades, will usually enter at level III of GSVQ Construction.
- ◆ **Direct entry into employment** — school leavers may enter employment directly, with Standard Grades, and progress through GSVQ and HNC, on a part-time route.
- ◆ **Adult entry** — adults seeking employment in this occupational area would usually undertake an Access Programme to enable them to enter a full-time HND or degree course.

SVQ access

At present, there are few relevant SVQs specifically in the Quantity Surveying area. It would be expected that any existing or proposed SVQ in this area would be undertaken whilst in employment, during or after an HNC, HND or degree.

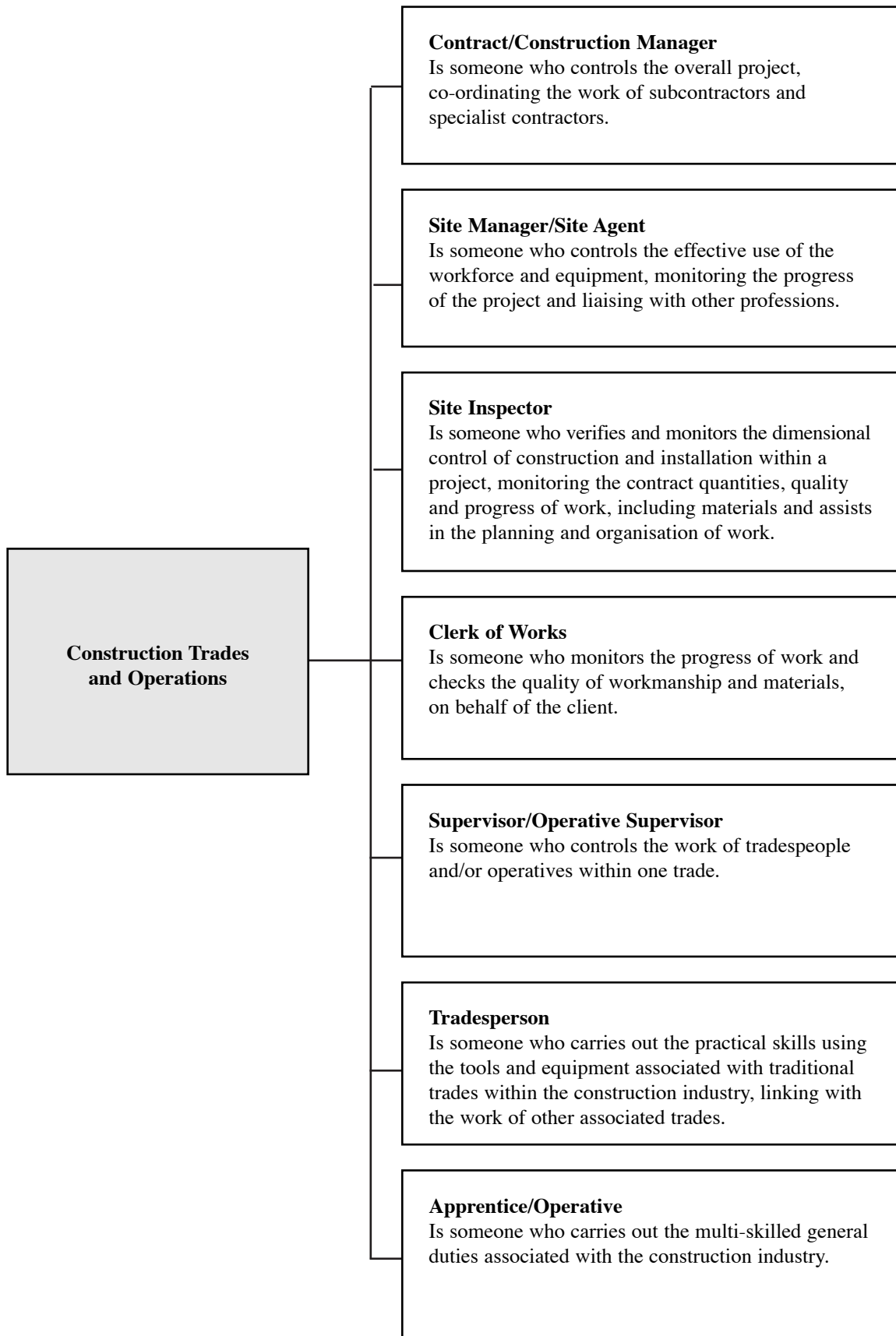
Entry requirements

- ◆ Entry to an SGA ranges from no formal qualifications to three or four Standard Grades (English, Maths and a Science).
- ◆ HNCs/HNDs usually require an appropriate SGA or two or three Highers and appropriate Standard Grades (English, Maths and a Science).
- ◆ Degree courses usually require three or four Highers including Maths and English (Physics preferred for some courses) and appropriate Standard Grades (English, Maths and a Science — preferably Physics). Geography is useful for Town Planning.

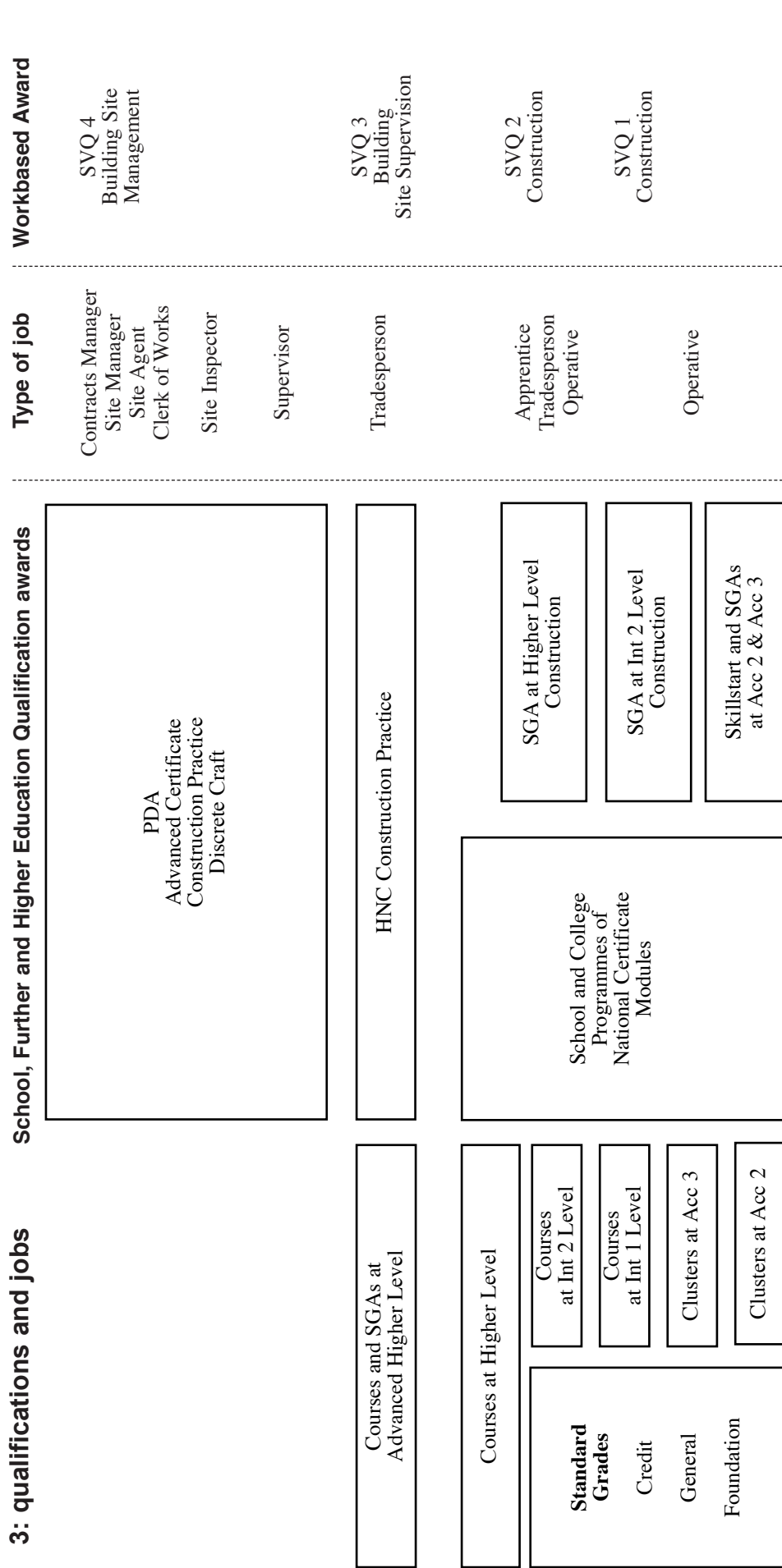
Note — entry requirements vary between institutions. Check prospectuses before applying.

Construction Trades and Operations

2. jobs and careers



Construction Trades and Operations



This diagram outlines the main qualifications in the Construction Trades and Operations area. A full list of all SQA qualifications is on the following pages. People can progress vertically from one qualification to another, eg from a Course at Int 1 to a Course at Int 2. In addition people can progress diagonally from one level of Standard Grade to a higher level of Course or Scottish Group Award (SGA), eg from Standard Grade at General level to Courses or SGAs at Int 2 level.

Colleges deliver NC training programmes which lead to the award of SVQs at levels 1 and 2 in Construction and which cover most of the knowledge and skills required for an SVQ 3. Note — Plumbing is covered in construction (Building Services).

In this diagram, SVQs and PDAs in the Vocational sector are placed according to current practice and usage in illustrating the relationships and pathways between qualifications, jobs and careers.

Construction Trades and Operations

4. qualifications

HNC

Construction Practice
Painting and Decorating: Supervision

PDA

Adv Certificate

Brickwork
Carpentry and Joinery
Construction Practice
Machine Woodworking
Painting and Decorating
Plasterwork
Roof Slating, Tiling and Cement Work
Stonemasonry

Certificate

Excavating Backfilling and Reinstatement of Construction Layers with a Cold-Lay Bituminous Surface
Excavating in the Highway
Monitoring Excavation Backfilling and Reinstatement of Construction Layers with Bituminous Materials
Monitoring Excavation in the Highway
Monitoring Reinstatement of Concrete Slabs
Monitoring Reinstatement of Construction Layers in Bituminous Materials
Monitoring Reinstatement of Modular Surfaces and Concrete Slabs
Reinstatement of Concrete Slabs
Reinstatement of Construction Layers in Hot-Lay and Cold-Lay Bituminous Materials
Reinstatement of Modular Surfaces and Concrete Footways

SGA

Higher

Construction
Int 2
Construction

GSVQ II

Construction

NC Group Awards

Advanced Roadworking
Excavation and Backfilling
Excavation in the Highway
Hotlay and Coldlay Bituminous
Monitoring Concrete Slabs
Monitoring Construction Layers
Monitoring Excavation and Backfilling
Monitoring Excavation in the Highway
Monitoring Surfaces and Concrete Footways
Reinstatement of Concrete Slabs
Reinstatement of Modular Services
Roadworking

National Course

Int 2

Construction Craft Skills
Construction Industry Practice

SVQ 4

Building Site Management
Construction Plant and Equipment Management
Highways Maintenance

SVQ 3

Building Site Supervision
Civil Engineering Site Supervision
Construction Plant and Equipment Supervision
Construction: Bricklaying
Construction: Carpentry and Joinery
Construction: Ceiling Fixing
Construction: Formworking
Construction: General Construction Operations
Construction: Glazing
Construction: Industrial Painting
Construction: Mason Pavior
Construction: Painting and Decorating
Construction: Plant Maintenance
Construction: Plant Operations
Construction: Plastering
Construction: Roof Slating and Tiling and Cement Work
Construction: Scaffolding
Construction: Shopfitting
Construction: Stonemasonry
Construction: Wall and Floor Tiling
Construction: Wood Machining
Highways Maintenance
Site Inspection
Woodmachining

SVQ 2

Construction: Applied Waterproof Membrane
Construction: Bricklaying
Construction: Carpentry and Joinery
Construction: Ceiling Fixing
Construction: Construction Operations
Construction: Floorcovering Occupations
Construction: Formworking
Construction: Glazing
Construction: Industrial Painting
Construction: Mastic Asphaltting
Construction: Plant Operations — Bored or Driven Works
Construction: Plant Operations — Earthmoving
Construction: Plant Operations — Lifting
Construction: Scaffolding
Fence Erection
Furniture Production: Assembled Furniture Production
Highways Maintenance
Water Distribution: Mains Laying
Water Distribution: Service Laying
Water Service Operations: Distribution Control
Wood Machining
Construction: Facade Maintenance
Construction: General Building Operations
Construction: General Building Operations (Workplace)
Construction: General Construction Operations
Construction: Painting and Decorating
Construction: Plant Maintenance
Construction: Plastering
Construction: Roof Sheeting and Cladding
Construction: Roof Slating and Tiling and Cement Work
Construction: Scaffolding
Construction: Shopfitting
Construction: Stonemasonry
Construction: Thatching
Construction: Wall and Floor Tiling
Construction: Wood Machining

SVQ 1

Construction: Accessing Occupations
Construction: Decorative Occupations
Construction: Fabricated Finishing Occupations
Construction: Floorcovering Occupations
Construction: General Building Operations
Construction: General Building Operations (Workplace)
Construction: General Construction Operations
Construction: Glazing
Construction: Plant Occupations
Construction: Roofing Occupations
Construction: Trowel Occupations
Construction: Wood Machining
Construction: Wood Occupations
Fixing Cable Supports
Fixing Cables
Highways Maintenance
Water Service Operations: Foundation

Construction Trades and Operations

5. notes on entry to jobs and careers

Tradesmen and operatives include bricklayer, carpenter and joiner, ceiling fixer, glazier, formworker, painter and decorator, plasterer, roofslater and tiler, shopfitter, stonemason, scaffolder, mastic, asphalter, plant mechanic.

Entry routes

- ◆ **School leavers** — usually with some Standard Grades, (although this is not essential), will enter employment directly and receive training via SVQ 2 and SVQ 3, through training schemes such as Skillseekers or Modern Apprenticeships in the appropriate trade.

School leavers without Standard Grades may be employed as operatives and undertake appropriate training via SVQ I.

SVQ access

SVQ at level 3 in Construction is required for registration as a tradesperson with the appropriate body.

Entry requirements

- ◆ Entry for school leavers usually requires no formal entry qualifications. Applicants may be asked to sit a test.
- ◆ Entry to an SGA ranges from no formal qualifications although some Standard Grades may be helpful. Useful subjects include English, Maths and Craft and Design.
- ◆ Entry to HNC is usually with appropriate NC or Advanced Certificate.

Note — entry requirements vary between institutions. Check prospectuses before applying.