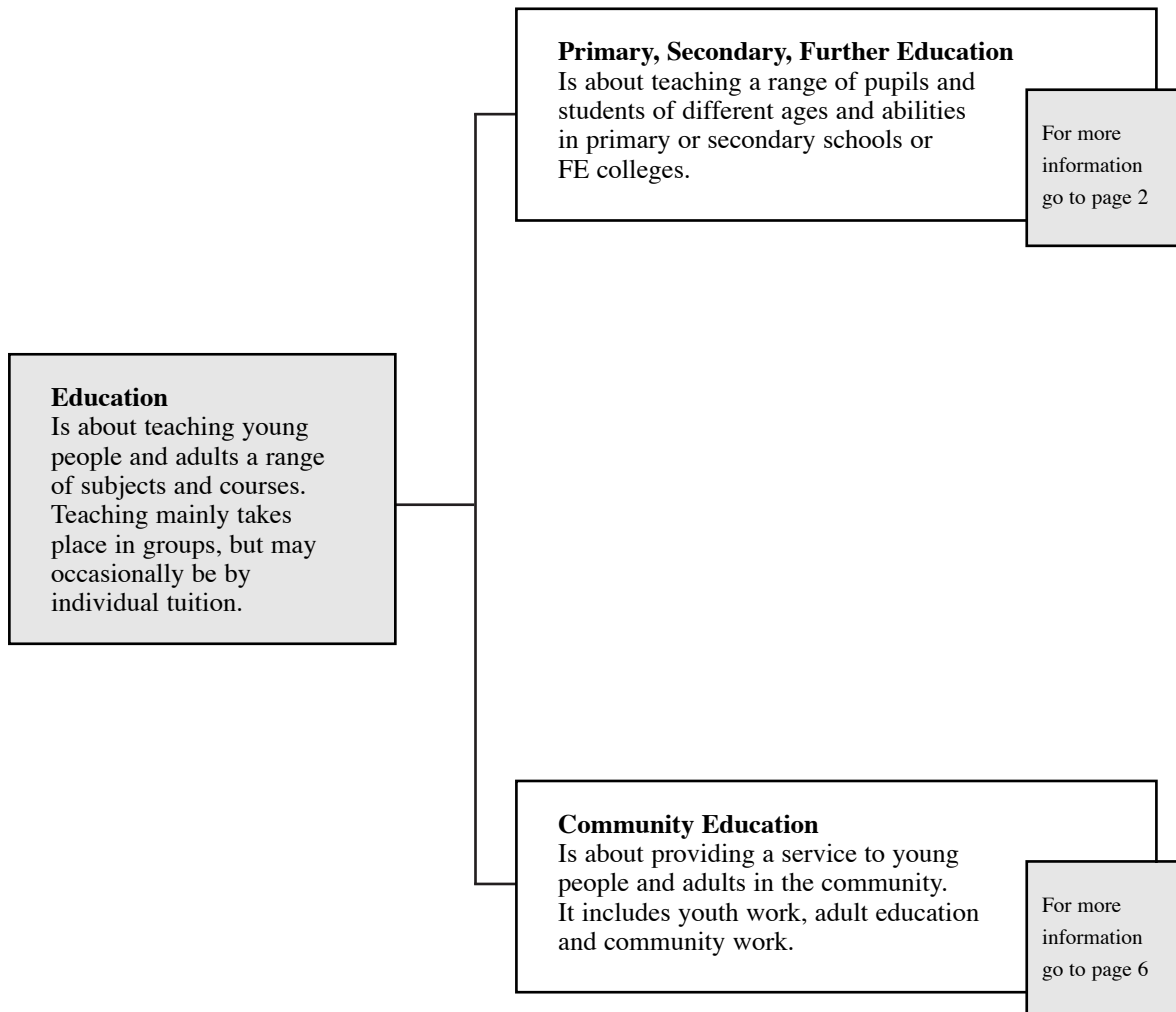


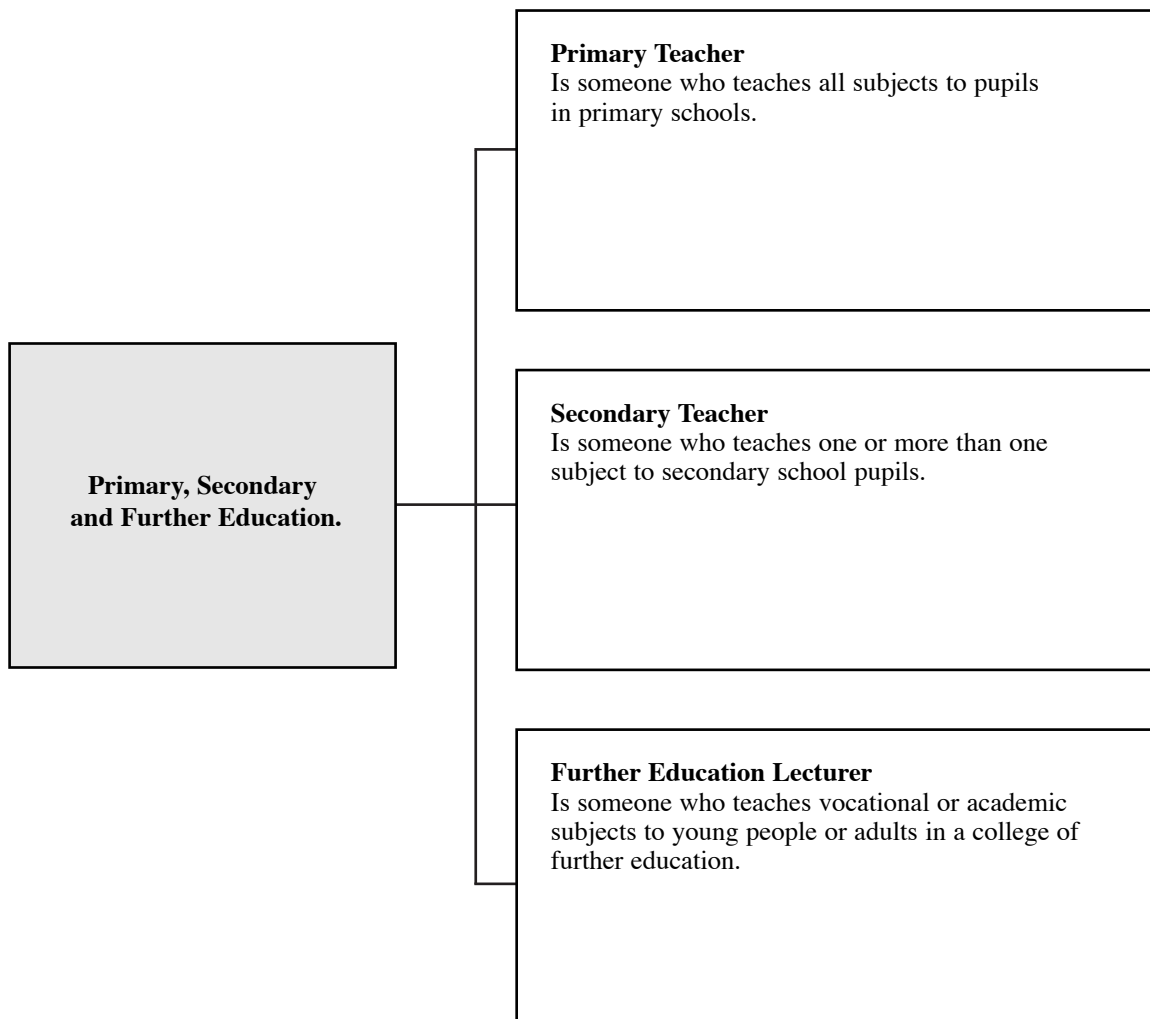
Education

1. career options

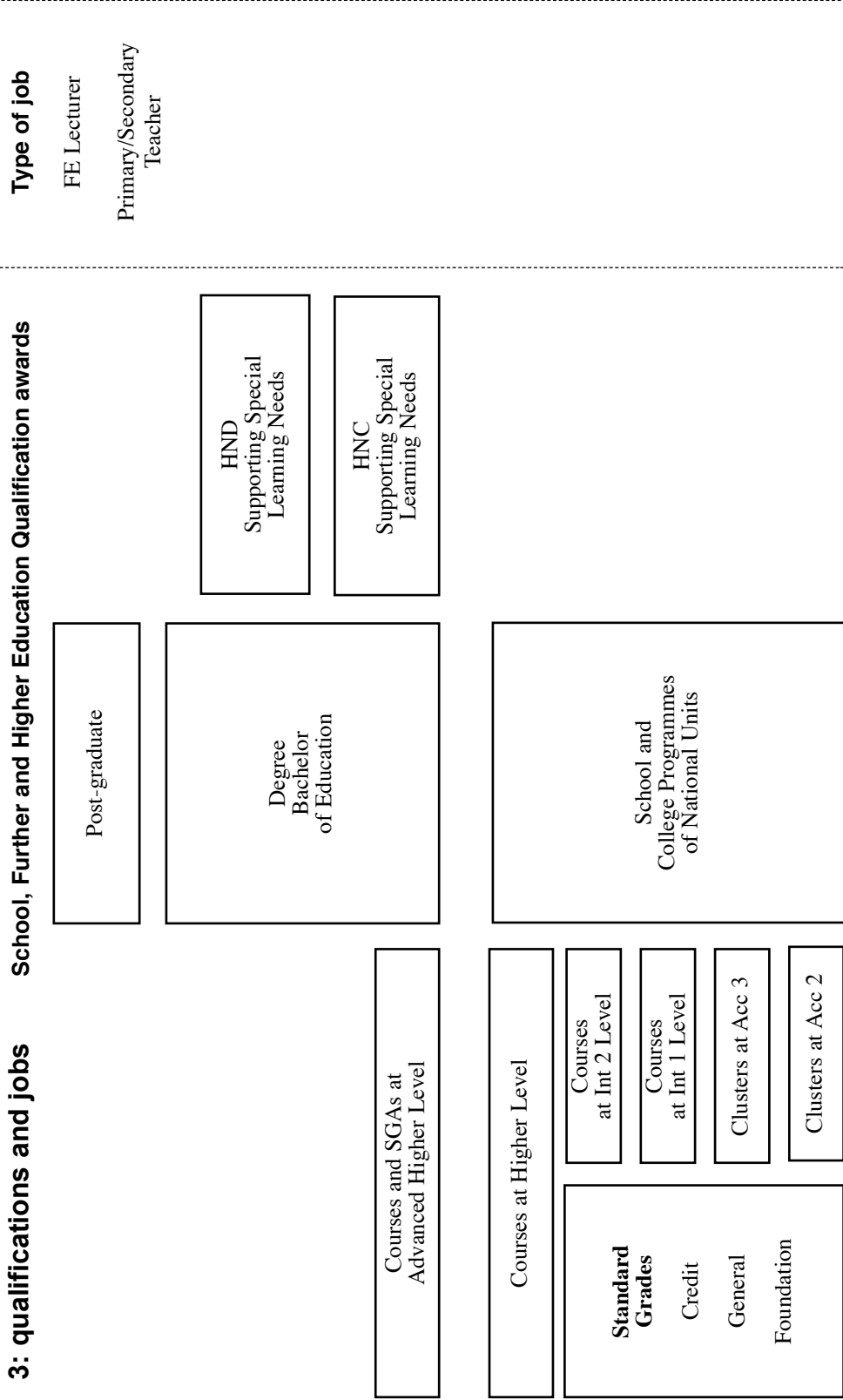


Primary, Secondary and Further Education

2. jobs and careers



Primary, Secondary and Further Education



This diagram outlines the main qualifications in the Primary, Secondary and Further Education area. A full list of all SQA qualifications is on the following pages. People can progress vertically from one qualification to another, eg from a Course at Int 1 to a Course at Int 2. In addition people can progress diagonally from one level of Standard Grade to a higher level of Course or Scottish Group Award (SGA), eg from Standard Grade at General level to Courses or SGAs at Int 2 level.

Primary, Secondary and Further Education

4. qualifications

HND

Supporting Special Learning Needs

HNC

Supporting Special Learning Needs

PDA

Diploma

Tutoring British Sign Language

Teaching in Further Education

Adv Certificate

Teaching in Further Education

Certificate

Introduction to Teaching in Further Education

Primary, Secondary and Further Education

5. notes on entry to jobs and careers

Entry routes

The teaching qualification for primary teachers is the four year Bachelor of Education B.Ed (Hons) or the one year Postgraduate Certificate in Education (PGCE) following a degree. For secondary teachers the teaching qualification is:

- 1 one-year PGCE after a degree in the subject(s) to be taught or
- 2 a four-year B.Ed in PE, Music or Technological Studies or
- 3 a combined degree which offers the study of education concurrently with an appropriate teaching subject

In Scotland teachers must be registered with the General Teaching Council. A two-year probationary period is required after obtaining qualifications before full registration.

Further education lecturers of academic subjects must be graduates and those teaching vocational subjects must have a degree or appropriate technical qualifications. There is a Further Education Teaching Qualification offered by the Scottish School of Further Education, Strathclyde University. Although this is not compulsory it is strongly recommended for FE lecturers.

- ◆ **School leavers** — the standard qualification is the B.Ed. HE courses provide the major routes into employment. There are few opportunities available in FE for progression.
- ◆ **Direct entry into employment** — there are no opportunities for direct entry to employment.
- ◆ **Adult entry** — there is no upper age limit for entry to teacher training. Mature applicants are welcomed.

Access course are available in some subjects.

SVQ access

There are no SVQs in this occupational area.

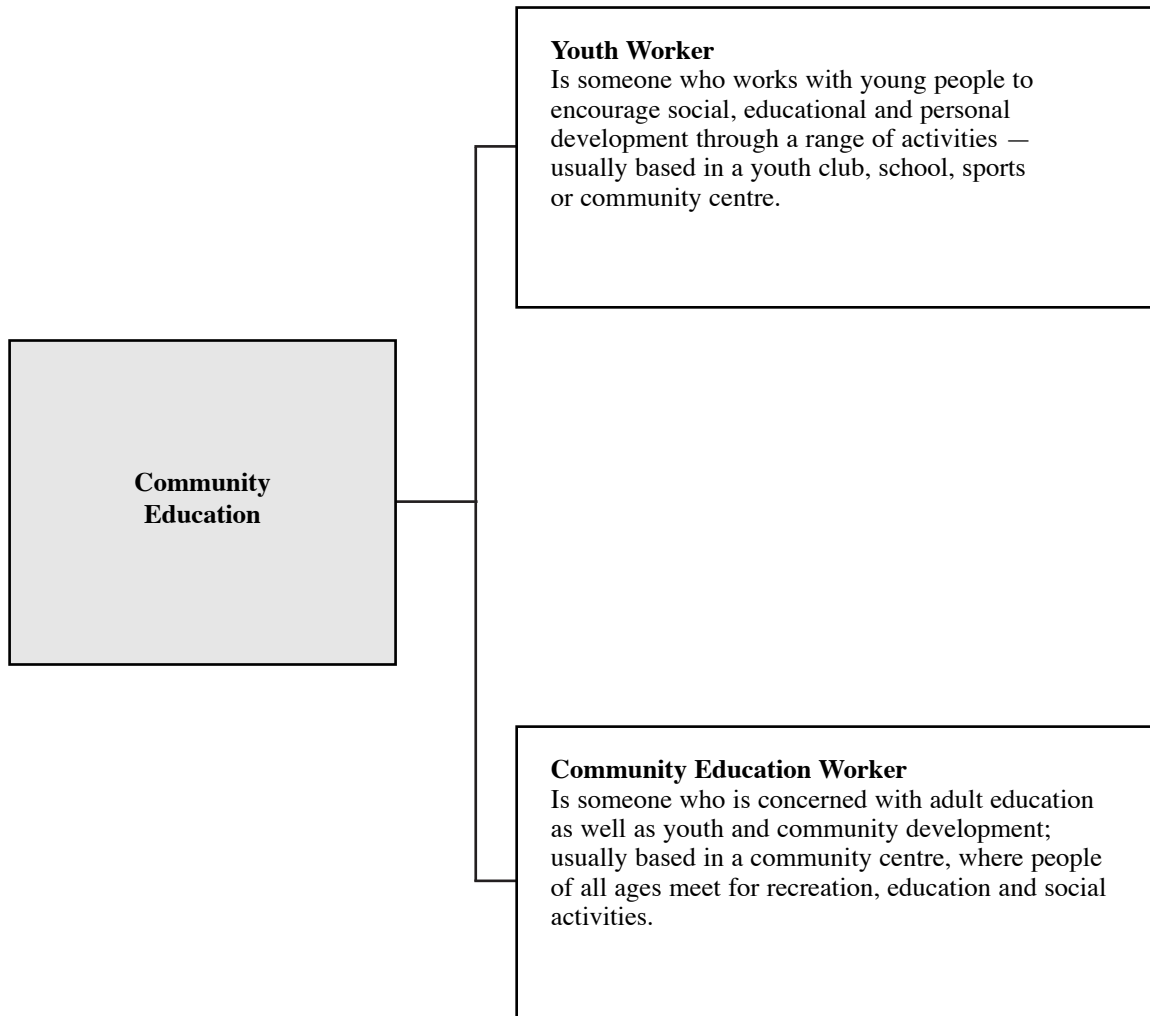
Entry requirements

- ◆ Entry to B.Ed is three or four Highers including English and Standard Grade Maths.
- ◆ Entry to PGCE is a degree in subject(s) to be taught plus Higher English and Standard Grade Maths.

Note — entry requirements vary between institutions. Check prospectuses before applying.

Community Education

2. jobs and careers



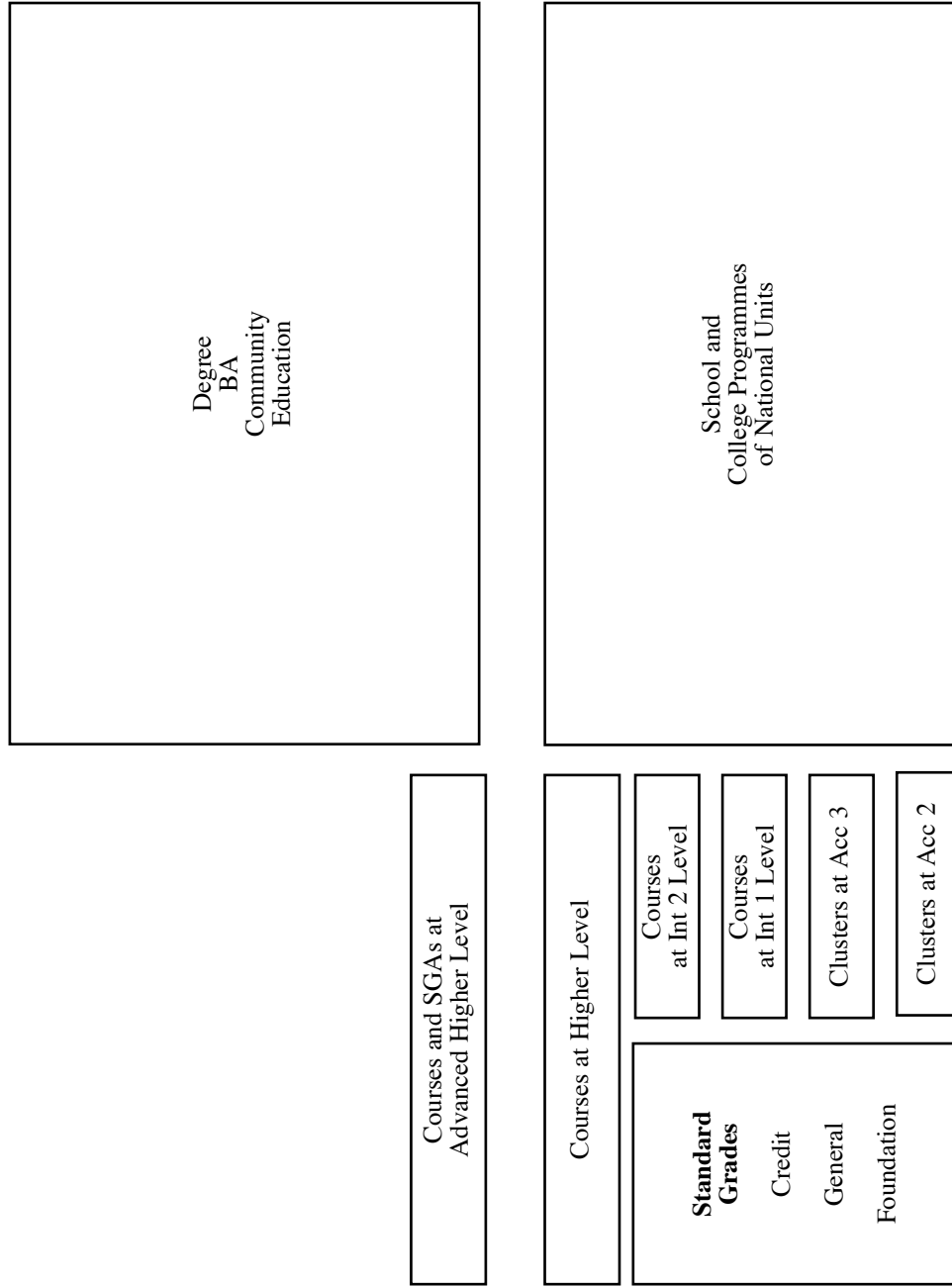
Community Education

3: qualifications and jobs

School, Further and Higher Education Qualification awards

Workbased Award

Type of job



This diagram outlines the main qualifications in the Community Education area. A full list of all SQA qualifications is on the following pages. People can progress vertically from one qualification to another, eg from a Course at Int 1 to a Course at Int 2. In addition people can progress diagonally from one level of Standard Grade to a higher level of Course or Scottish Group Award (SGA), eg from Standard Grade at General level to Courses or SGAs at Int 2 level.

In this diagram, SVQs and PDAs in the Vocational sector are placed according to current practice and usage in illustrating the relationships and pathways between qualifications, jobs and careers.

Community Education

4. qualifications

SVQ 4

Community Work

SVQ 3

Community Work

SVQ 2

Community Work

SPA

Advice and Guidance: Deliver Group Sessions

Advice and Guidance: Design and Deliver Group Sessions

Advice and Guidance: Developing Client Contact

Advice and Guidance: In-Depth Advice and Guidance Interviewing

Advice and Guidance: Managing Information

Advice and Guidance: Professional Practice

Advice and Guidance: Providing Information and Support to Clients

Advice and Guidance: Supporting Clients Through the Medium of Telecommunications

Advice and Guidance: Working within a Network to Support Clients

Community Education

5. notes on entry to jobs and careers

Entry routes

- ♦ **School leavers** — the standard qualification is the BA Community Education. A one-year Postgraduate Certificate/Diploma is also available for those with a degree in another subject, or equivalent qualifications.
- ♦ **Adult entry** — mature applicants are encouraged, especially for people with experience in paid or voluntary youth and community work. A number of ‘apprenticeship’ routes are also available, aimed mainly at those with significant experience of community work, allowing access to a part-time BA in Community Education. For details of these contact the Scottish Community Education Council.

SVQ access

SVQs are normally accessed through employment.

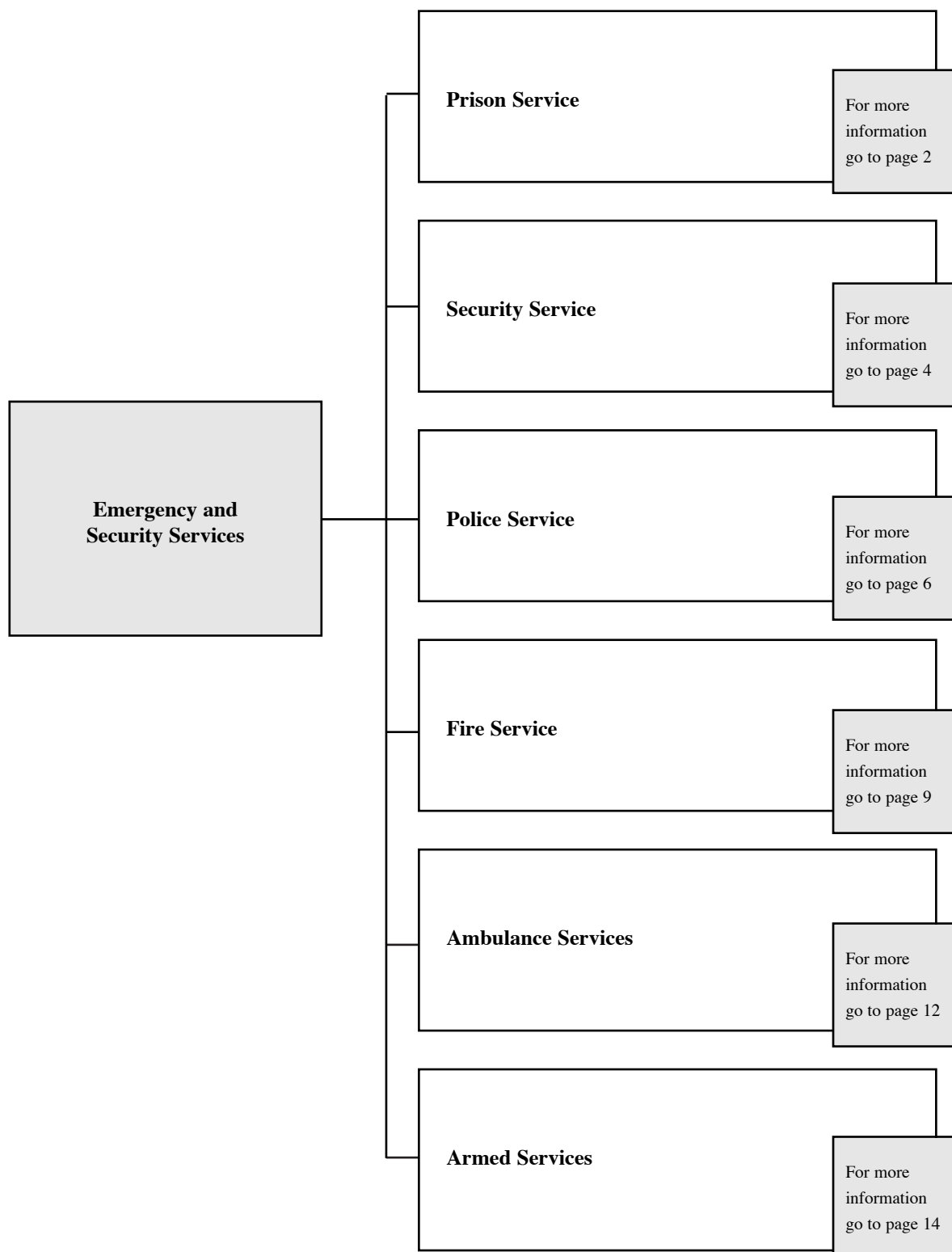
Entry requirements

- ♦ Degree courses usually require three or four Highers including Standard Grade Maths; or appropriate HNC/HND.

Note — entry requirements vary between institutions. Check prospectuses before applying.

Emergency and Security Services

1. career options



SQA offers a small number of qualifications in this area which are mainly workbased awards, accessed through employment.

Brief information on entry to the services and useful contact addresses and telephone numbers for the public services is included.

Prison Service

2. jobs and career sources

To enter the Prison Service there are no formal educational requirements but applicants have to pass an aptitude test and medical examination.

Contact address

Scottish Prison Service
Central Recruitment Board
Calton House
5 Redheughs Rigg
EDINBURGH
EH12 9HW

Tel: 0131-244 8591