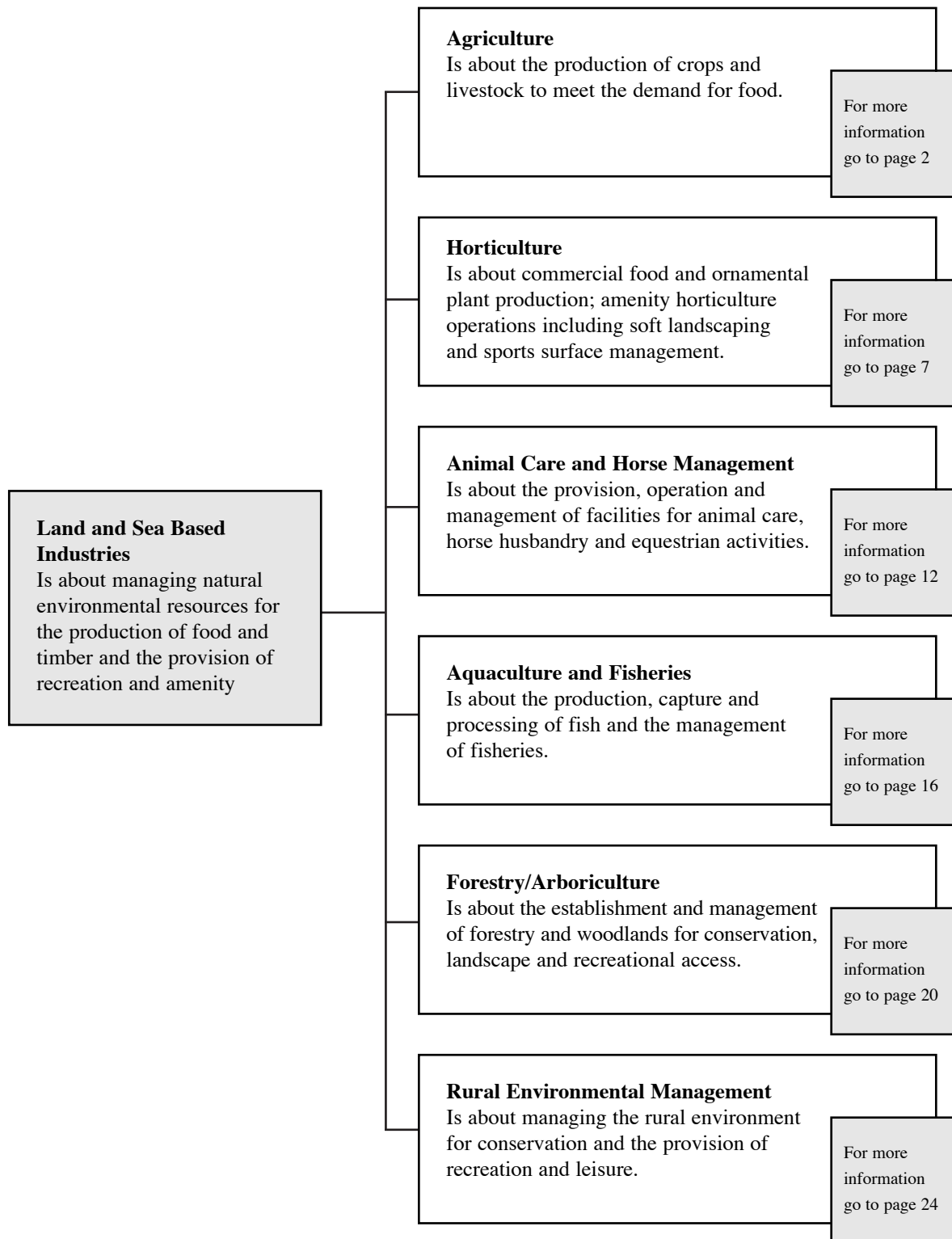


# Land and sea based industries

## 1. career options

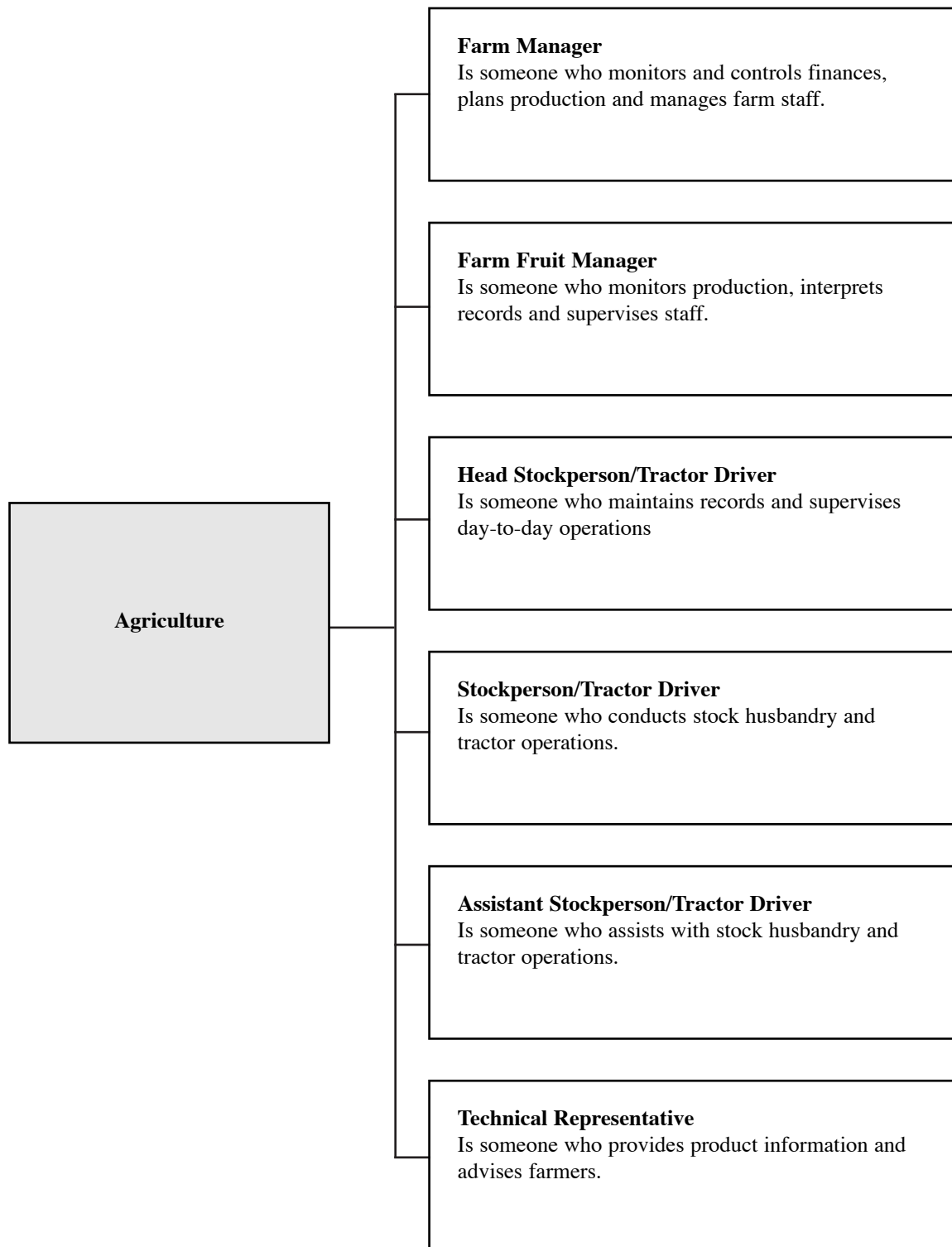


Other career areas related to Land and Sea Based Industries include:

- 7. Construction (Built Environment)
- 7. Construction (Construction Trades and Operations)

# Agriculture

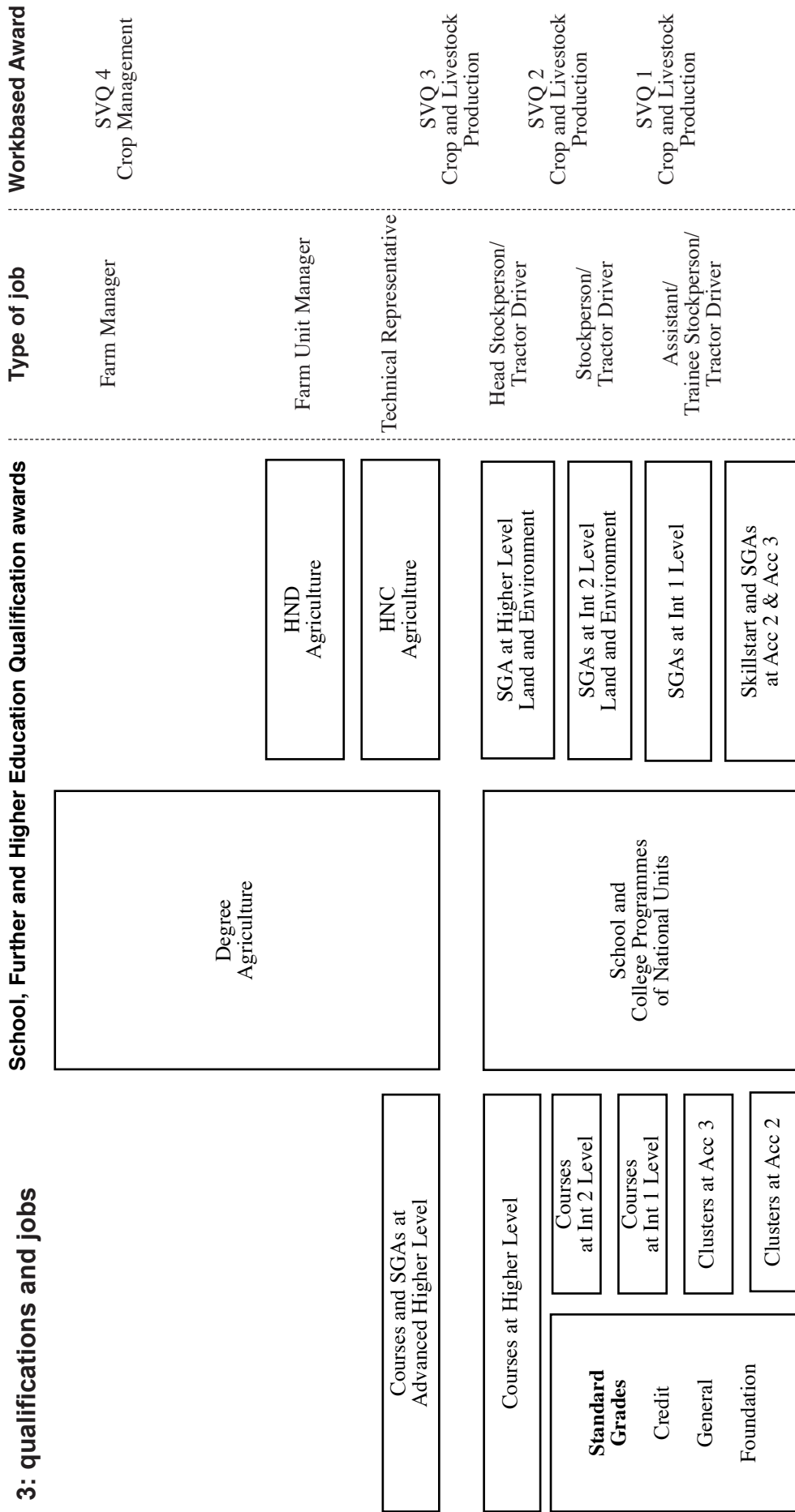
## 2. jobs and careers



In many cases, jobs at any one level may in practice involve carrying out the activities indicated for lower level/levels since one or a small number of people may be involved in a particular enterprise. A small number of jobs are also available for well qualified graduates in the research and advisory services.

# Agriculture

## 3: qualifications and jobs



This diagram outlines the main qualifications in the Agriculture area. A full list of all SQA qualifications is on the following pages. People can progress vertically from one qualification to another, eg from a Course at Int 1 to a Course at Int 2. In addition people can progress diagonally from one level of Standard Grade to a higher level of Course or Scottish Group Award (SGA), eg from Standard Grade at General level to Courses or SGAs at Int 2 level.

In this diagram, SVQs and PDAs in the Vocational sector are placed according to current practice and usage in illustrating the relationships and pathways between qualifications, jobs and careers.

# Agriculture

## 4. qualifications

### **HND**

Agricultural Science  
Agriculture  
Pig Enterprise Management  
Poultry Production and Management

### **HNC**

Agriculture  
Poultry Production

### **SGA**

#### **Higher**

Land and Environment

#### **Int 2**

Land and Environment

### **GSVQ III**

Land-Based Industries

### **GSVQ II**

Land-Based Industries

### **SVQ 4**

Crop Management: Context of Agriculture  
Livestock Management

### **SVQ 3**

Crop and Livestock Production  
Extensive Crop Production  
Estate Maintenance  
Intensive Crop Production  
Intensive Crop Production: Context of Intensive Vegetable Crops  
Livestock Production  
Livestock Production: Context of Beef Production  
Livestock Production: Context of Dairy Production  
Livestock Production: Context of Pig Production  
Livestock Production: Context of Poultry Production  
Livestock Production: Context of Sheep Production  
Mechanised Field Crop Production  
Mechanised Field Crop Production: Context of Combinable Crop Production  
Mechanised Field Crop Production: Context of Field Scale Root and Vegetable Crops  
Mechanised Field Crop Production: Context of Grass and Fodder Crops  
Mechanised Field Crop Production: Context of Potato Crop Production  
Mixed Farming

**SVQ 2**

Crop and Livestock Production

Estate Maintenance

Extensive Crop Production

Intensive Crop Production

Livestock Production

Livestock Production: Context of Beef Production

Livestock Production: Context of Dairy Production

Livestock Production: Context of Pig Production

Livestock Production: Context of Poultry Production

Livestock Production: Context of Sheep Production

Mechanised Field Crop Production

Mechanised Field Crop Production: Context of Combinable Crop Production

Mechanised Field Crop Production: Context of Field Scale Root and Vegetable Crops

Mechanised Field Crop Production: Context of Grass and Fodder Crops

Mechanised Field Crop Production: Context of Potato Crop Production

Mixed Farming

**SVQ 1**

Crop and Livestock Production

General Agriculture

Intensive Crop Production

Livestock Production

Mechanised Field Crop Production

**National Course****Int 2**

Crop Establishment

# Agriculture

## 5. notes on entry to jobs and careers

### Entry routes

There are various ways into jobs and careers in agriculture:

- ◆ **School leavers** — the entry route for school-leavers depends on qualifications and individual career ideas: it may be direct from school, after FE or HE
- ◆ **Adult entry** — mature entrants may enter directly or after FE depending on practical experience.

### SVQ access

SVQs are usually accessed through employment.

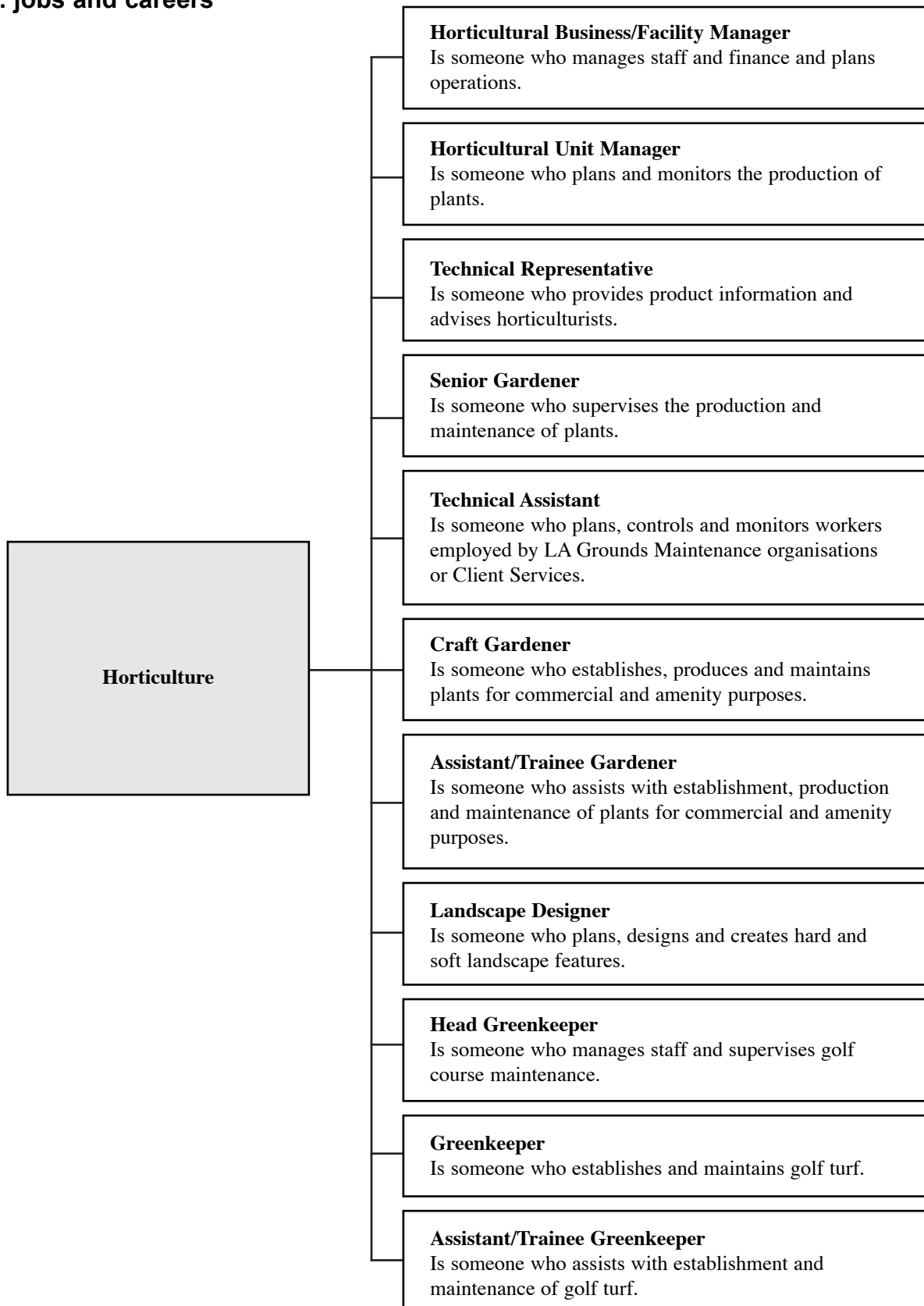
### Entry requirements

- ◆ Entry to an SGA ranges from no formal qualifications to three or four Standard Grades including English and Maths (a science is sometimes required)
- ◆ HNCs/HNDs usually require an appropriate SGA or two Highers and three Standard Grades (Biology or Chemistry preferred)
- ◆ Degree courses usually require three or four Highers including two Maths/Science subjects plus Standard Grade Maths, English and preferably Chemistry and Biology; or appropriate HNC/HND

**Note** — entry requirements vary between institutions. Check prospectuses before applying

# Horticulture

## 2. jobs and careers



This is a diverse area with jobs including nursery work, propagation, landscaping, grounds maintenance and greenkeeping. A small number of jobs are also available for well qualified graduates in the research and advisory services.



# Horticulture

## 4. qualifications

### **HND**

Amenity Horticulture  
Garden Design  
Golf Course Management  
Golf Facility Management  
Horticultural Science  
Horticulture  
Horticulture with Plantsmanship  
Production Horticulture

### **HNC**

Garden Design  
Golf Course Management  
Horticulture  
Landscape Management

### **PDA**

#### **Diploma**

Horticultural Therapy  
Sports Ground Staff: Cricket  
Sports Ground Staff: Football  
Sports Ground Staff: Rugby

#### **Adv Certificate**

Golf Facility Management  
International Golf Course Management  
Sports Ground Staff: Cricket  
Sports Ground Staff: Football  
Sports Ground Staff: Rugby

#### **Certificate**

Garden Centre Operation  
Sports Ground Staff: Cricket  
Sports Ground Staff: Football  
Sports Ground Staff: Rugby

### **SGA**

#### **Higher**

Land and Environment

#### **Int 2**

Land and Environment

### **GSVQ III**

Land-Based Industries

### **GSVQ II**

Land-Based Industries

### **NC Group Award**

Greenkeeping

### **National Course**

#### **Higher**

Amenity Horticulture

#### **Int 2**

Plant Propagation

#### **SVQ 4**

Amenity Horticulture  
Crop Management: Context of Horticulture  
Designing Landscapes and Planning their Management  
Managing Landscape Construction and Maintenance

#### **SVQ 3**

Amenity Horticulture  
Amenity Horticulture: Sports Turf Maintenance  
Commercial Horticulture: Garden Centre Operation  
Constructing and Restoring Landscapes  
Designing and Specifying Landscape Designs  
Floristry  
Fruit Crop Production  
Intensive Crop Production: Intensive Vegetable Crops  
Intensive Crop Production: Protected Crops: Food Crops  
Intensive Crop Production: Protected Crops: Ornamental Crops  
Maintaining Sports Turf  
Managing Trees and Woodlands  
Mushroom Crop Production  
Nursery Stock Production  
Service Engineering: Garden Machinery

#### **SVQ 2**

Amenity Horticulture  
Amenity Horticulture: Sports Turf  
Amenity Horticulture: Arboriculture  
Amenity Horticulture: Greenkeeping — Sports-Turf Grounds Maintenance  
Amenity Horticulture: Hard Landscaping  
Amenity Horticulture: Nursery-Interior Soft Landscape Maintenance  
Commercial Horticulture: Garden Centre Operation  
Floristry  
Fruit Crop Production  
Intensive Crop Production: Context of Nursery Crop Production  
Intensive Crop Production: Context of Protected Crops: Food Crops  
Intensive Crop Production: Context of Protected Crops: Ornamental Crops  
Mushroom Crop Production  
Service Engineering: Garden Machinery

#### **SVQ 1**

Amenity Horticulture  
Commercial Horticulture  
Floristry  
Fruit Crop Production  
Intensive Crop Production  
Mushroom Crop Production

# Horticulture

## 5. notes on entry to jobs and careers

### Entry routes

- ♦ **School leavers** — the entry route for school-leavers depends on qualifications and individual career ideas: it may be direct from school, after FE or HE.
- ♦ **Adult entry** — mature entrants may enter directly or after FE depending on practical experience.

### SVQ access

SVQs are usually accessed via employment.

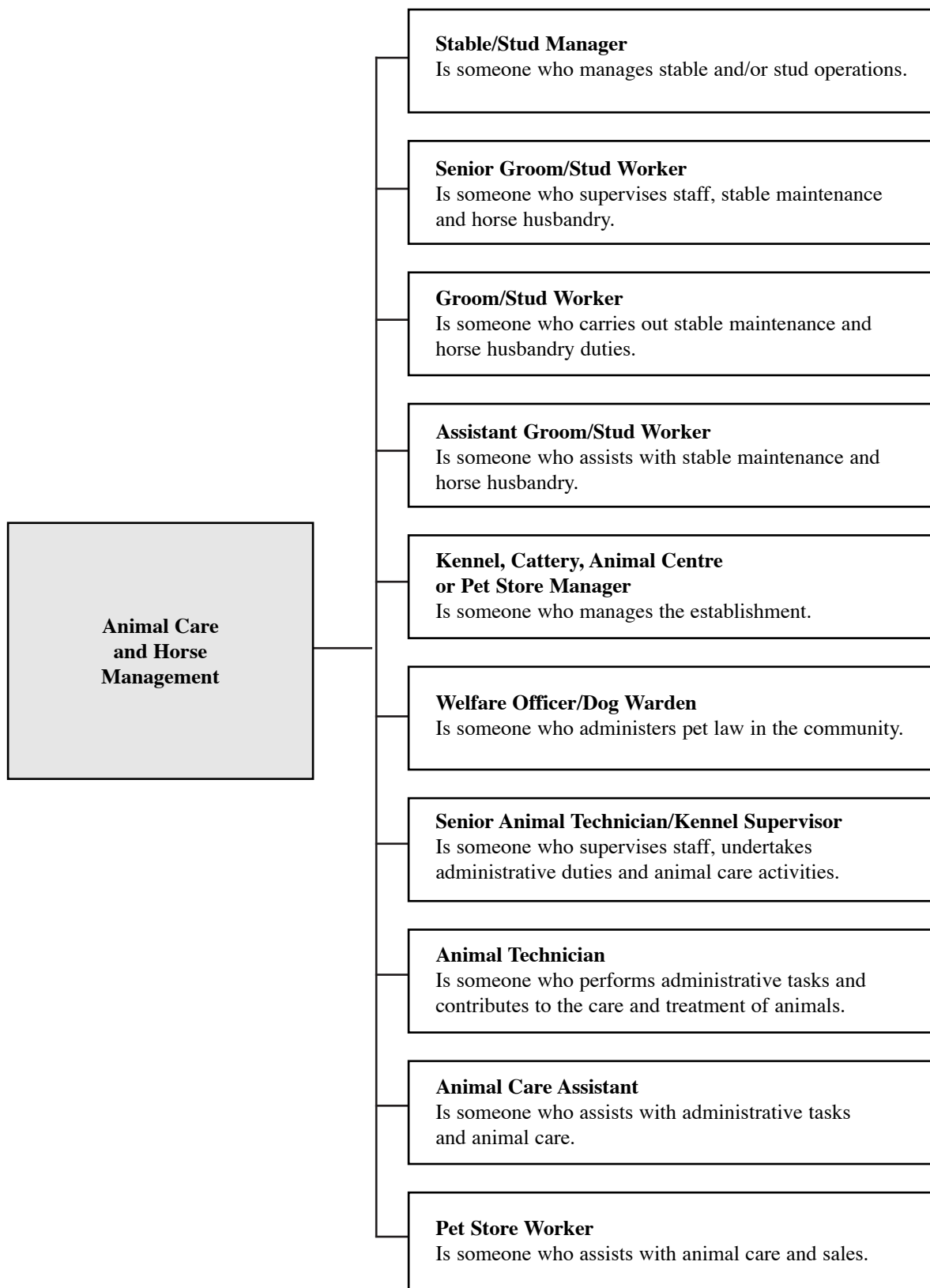
### Entry requirements

- ♦ Entry at an SGA ranges from no formal qualifications to four Standard Grades (English and Maths preferred). Previous experience sometimes required.
- ♦ HNCs/HNDs usually require an appropriate SGA or one or two Highers (Biology or Chemistry preferred) plus Standard Grade English and Maths
- ♦ Degree courses usually require three or four Highers including Chemistry and another Maths/Science subject (Economics or Geography accepted) plus Standard Grade English and Maths; or appropriate HNC/HND

**Note** — entry requirements vary between institutions. Check prospectuses before applying.

# Animal Care and Horse Management

## 2. jobs and careers

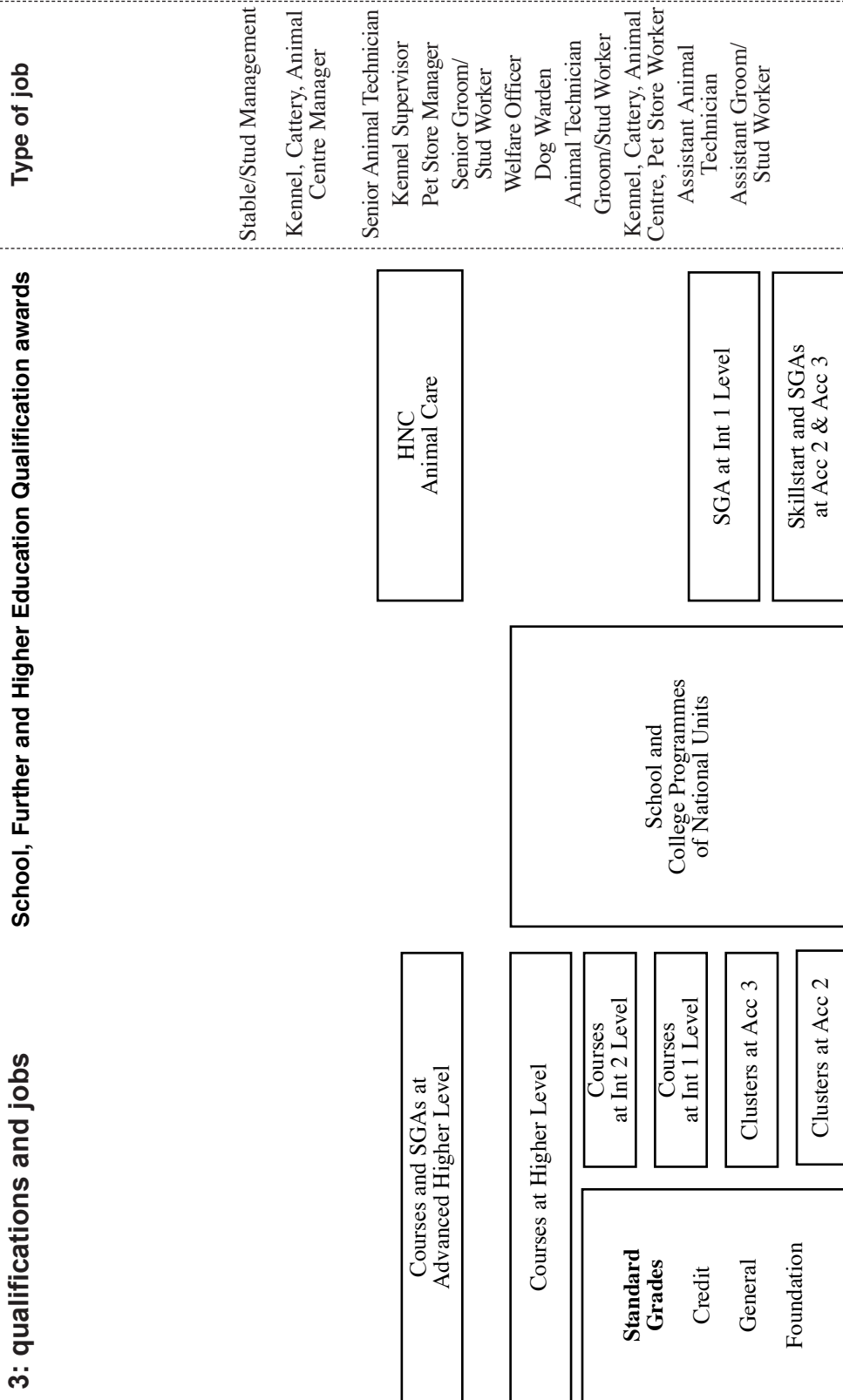


# Animal Care and Horse Management

3: qualifications and jobs

School, Further and Higher Education Qualification awards

Workbased Award



This diagram outlines the main qualifications in the Animal Care and Horse Management area. A full list of all SQA qualifications is on the following pages. People can progress vertically from one qualification to another, eg from a Course at Int 1 to a Course at Int 2. In addition people can progress diagonally from one level of Standard Grade to a higher level of Course or Scottish Group Award (SGA), eg from Standard Grade at General level to Courses or SGAs at Int 2 level.

In this diagram, SVQs and PDAs in the Vocational sector are placed according to current practice and usage in illustrating the relationships and pathways between qualifications, jobs and careers.

# Animal Care and Horse Management

## 4. qualifications

### **HND**

Animal Care and Management  
Horse Management

### **HNC**

Animal Care  
Horse Management  
Kennel, Cattery and Animal Centre Management

### **SVQ 3**

Animal Training  
Animal Welfare and Management  
Horse Care and Management  
Pet Care and Supply  
Racehorse Care and Management

### **SVQ 2**

Caring for Animals  
Horse Care  
Racehorse Care  
Saddlery

### **SVQ 1**

Animal Care  
Horse Care

### **National Course**

**Int 2**  
Livestock Production

# Animal Care and Horse Management

## 5. notes on entry to jobs and careers

Jobs relate to animal care work in veterinary practices, animal centres, and equestrian centres from assistant to senior grades, managers and owners, and to the manufacture of equestrian equipment.

### Entry routes

There are various ways into animal care and horse management jobs and careers:

- ◆ **School leavers** — the entry route for school-leavers depends on qualifications and individual career ideas: it may be direct from school, after FE or HE.
- ◆ **Adult entry** — mature entrants may enter directly or after FE, depending on practical experience.

### SVQ access

SVQs are usually accessed through employment.

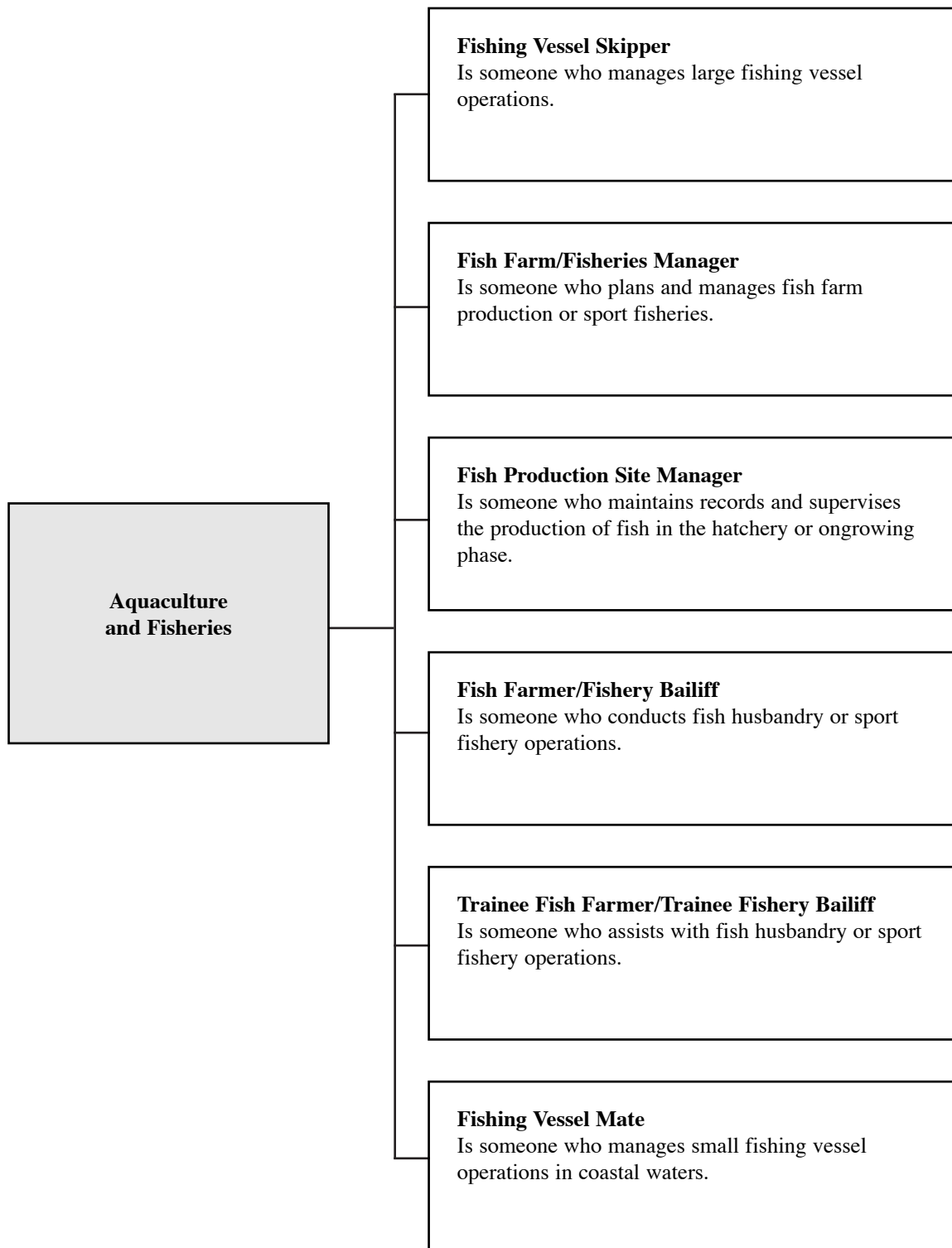
### Entry requirements

- ◆ Entry to an SGA ranges from no formal qualifications to four Standard Grades (English, Maths and a numeracy subject preferred). Previous experience sometimes required
- ◆ HNCs/HNDs usually require an appropriate SGA or one or two Highers and two Standard Grades including English

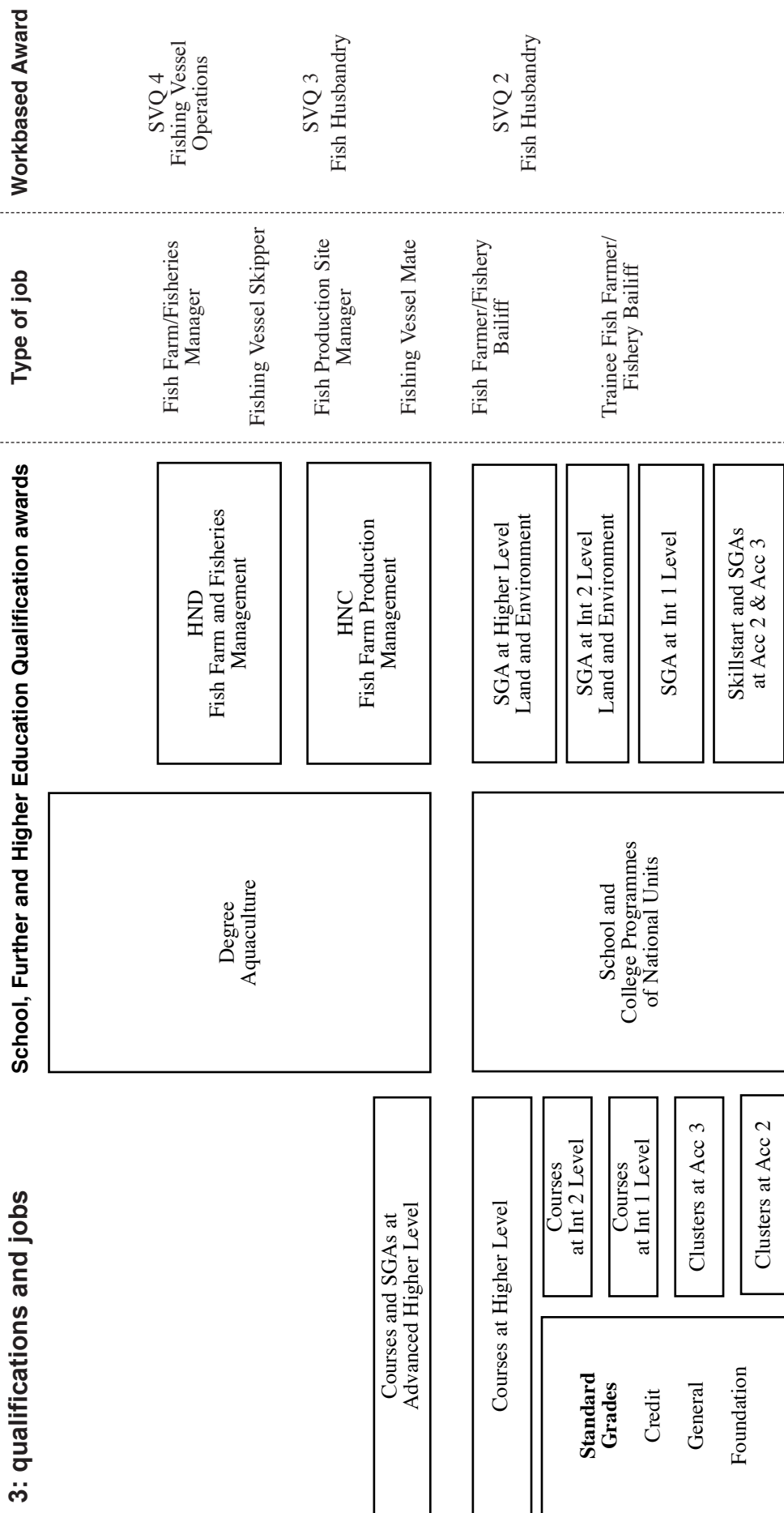
**Note** — entry requirements vary between institutions. Check prospectuses before applying.

# Aquaculture and Fisheries

## 2. jobs and careers



# Aquaculture and Fisheries



This diagram outlines the main qualifications in the Aquaculture and Fisheries area. A full list of all SQA qualifications is on the following pages. People can progress vertically from one qualification to another, eg from a Course at Int 1 to a Course at Int 2. In addition people can progress diagonally from one level of Standard Grade to a higher level of Course or Scottish Group Award (SGA), eg from Standard Grade at General level to Courses or SGAs at Int 2 level.

In this diagram, SVQs and PDAs in the Vocational sector are placed according to current practice and usage in illustrating the relationships and pathways between qualifications, jobs and careers.

# Aquaculture and Fisheries

## 4. qualifications

### **HND**

Fish Farm and Fisheries Management

### **HNC**

Fish Farm Production Management  
Seafood Science and Technology

### **SGA**

#### **Higher**

Land and Environment

#### **Int 2**

Land and Environment

### **GSVQ III**

Land-Based Industries

### **GSVQ II**

Land-Based Industries

### **SVQ 4**

Fishing Vessel Operations: Limited Area  
Fishing Vessel Operations: Unlimited Area  
Fishing Vessel Engineering

### **SVQ 3**

Fish Husbandry  
Fishing Vessel Engineering  
Fishing Vessel Operations: Inshore Area  
Fishing Vessel Operations: Unlimited Area

### **SVQ 2**

Fish Husbandry  
Fish Processing: Primary  
Fish Processing: Secondary  
Fish Processing: Smoking  
Fishing Vessel Operations  
Fishing Vessel Engineering  
Shellfish Processing  
Shellfish Processing: Scampi

### **National Course**

#### **Int 2**

Fish Husbandry  
Investigating Fish Rearing Systems

# Aquaculture and Fisheries

## 5. notes on entry to jobs and careers

Jobs relate to, fish farming, sport fisheries, fish processing and fishing vessel operation and maintenance at various levels from assistant to senior grades, managers and owners.

### Entry routes

There are various ways into jobs and careers in aquaculture and fisheries:

- ◆ **School leavers** — the entry route for school-leavers depends on qualifications and individual career ideas: it may be direct from school, after FE or HE.
- ◆ **Adult entry** — mature entrants may enter directly or after FE

### SVQ access

SVQs are usually accessed via employment.

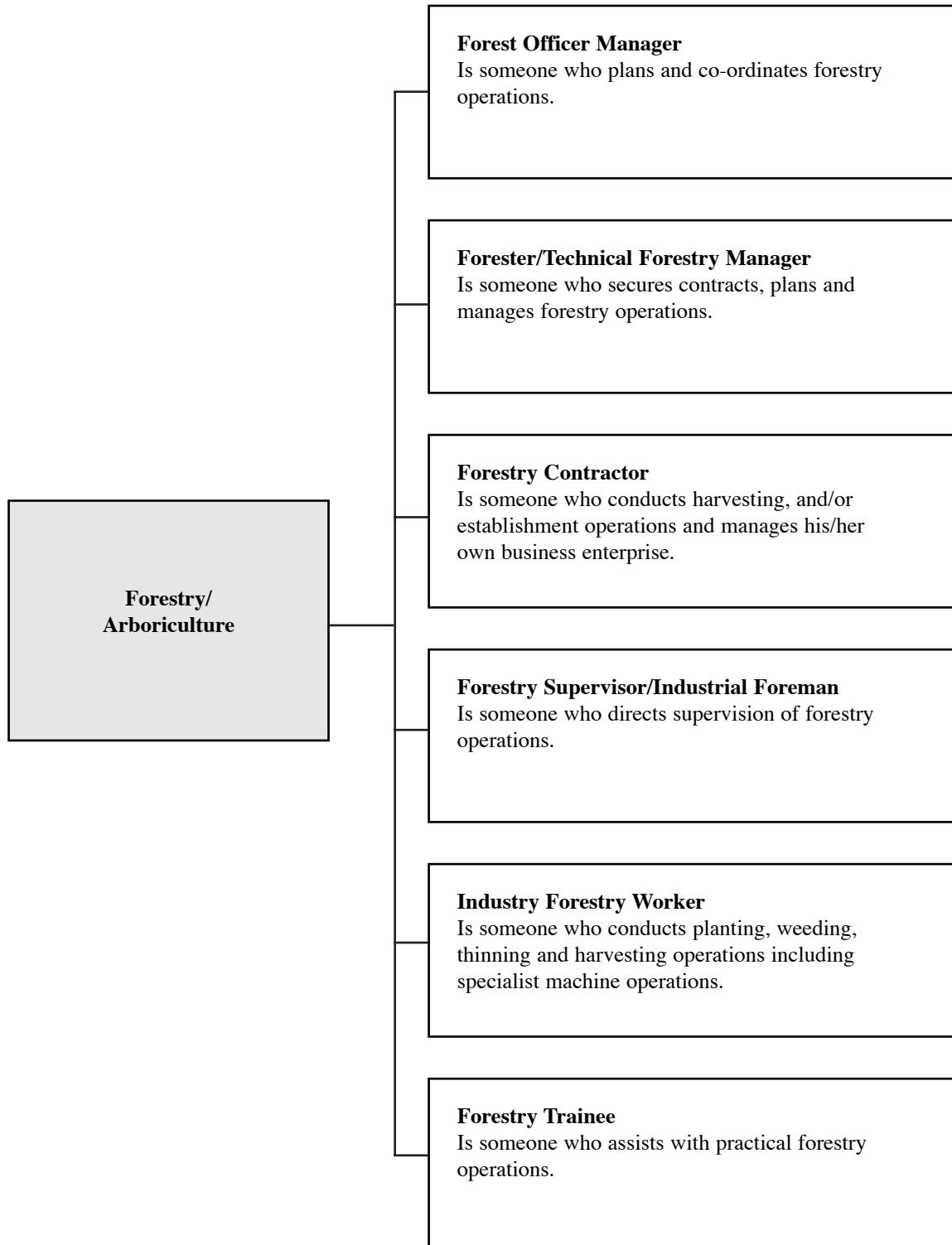
### Entry requirements

- ◆ Entry to an SGA ranges from no formal qualifications to three Standard Grades including English and Maths
- ◆ HNCs/HNDs usually require an appropriate SGA or two Highers and three Standard Grades including Maths and English
- ◆ Degree courses usually require three or four Highers including one or two Maths/Science subjects plus Standard Grade Maths, English and Chemistry or Physics; or appropriate HNC/HND

**Note** — entry requirements vary between institutions. Check prospectuses before applying.

# Forestry/Arboriculture

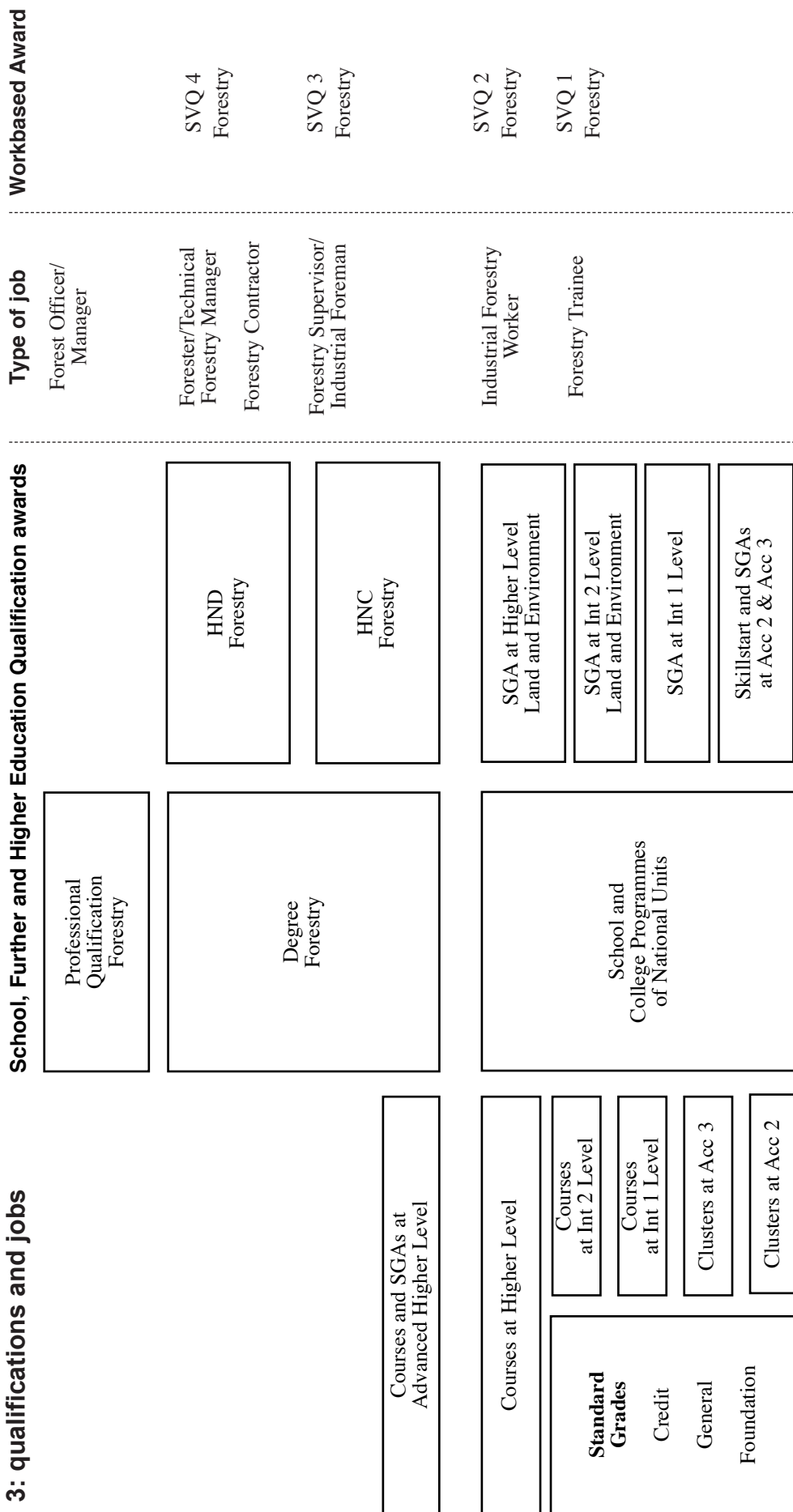
## 2. jobs and careers



In many cases, jobs at any one level may in practice involve carrying out the activities indicated for lower level/levels since one or a small number of people may be involved in a particular enterprise.

# Forestry/Arboriculture

## 3: qualifications and jobs



This diagram outlines the main qualifications in the Forestry/Arboriculture area. A full list of all SQA qualifications is on the following pages. People can progress vertically from one qualification to another, eg from a Course at Int 1 to a Course at Int 2. In addition people can progress diagonally from one level of Standard Grade to a higher level of Course or Scottish Group Award (SGA), eg from Standard Grade at General level to Courses or SGAs at Int 2 level.

In this diagram, SVQs and PDAs in the Vocational sector are placed according to current practice and usage in illustrating the relationships and pathways between qualifications, jobs and careers.

# Forestry/Arboriculture

## 4. qualifications

### **HND**

Arboriculture and Urban Forestry  
Forestry

### **HNC**

Arboriculture  
Arboriculture and Urban Forestry  
Forestry

### **SGA**

#### **Higher**

Land and Environment

#### **Int 2**

Land and Environment

### **GSVQ III**

Land-Based Industries

### **GSVQ II**

Land-Based Industries

### **SVQ 4**

Forestry

### **SVQ 3**

Estate Maintenance

Forestry: Contracting

Forestry: Supervising and Operating

Managing Trees and Woodlands

### **SVQ 2**

Amenity Horticulture: Arboriculture

Estate Maintenance

Forestry: Establishment and Maintenance

Forestry: Harvesting

### **SVQ I**

Forestry

### **National Course**

#### **Higher**

Interpreting the Natural Environment

Natural Environment

#### **Int 2**

Forest Industry

Forestry Practice

Investigating the Natural Environment

# Forestry/Arboriculture

## 5. notes on entry to jobs and careers

### Entry routes

- ◆ **School leavers** — the entry route for school-leavers depends on qualifications and individual career ideas: it may be direct from school, after FE or HE
- ◆ **Adult entry** — mature entrants may enter directly or after FE

### SVQ access

SVQs are usually accessed through employment or through government training such as Skillseekers.

The professional qualification in this area is corporate membership of the Institute of Chartered Foresters.

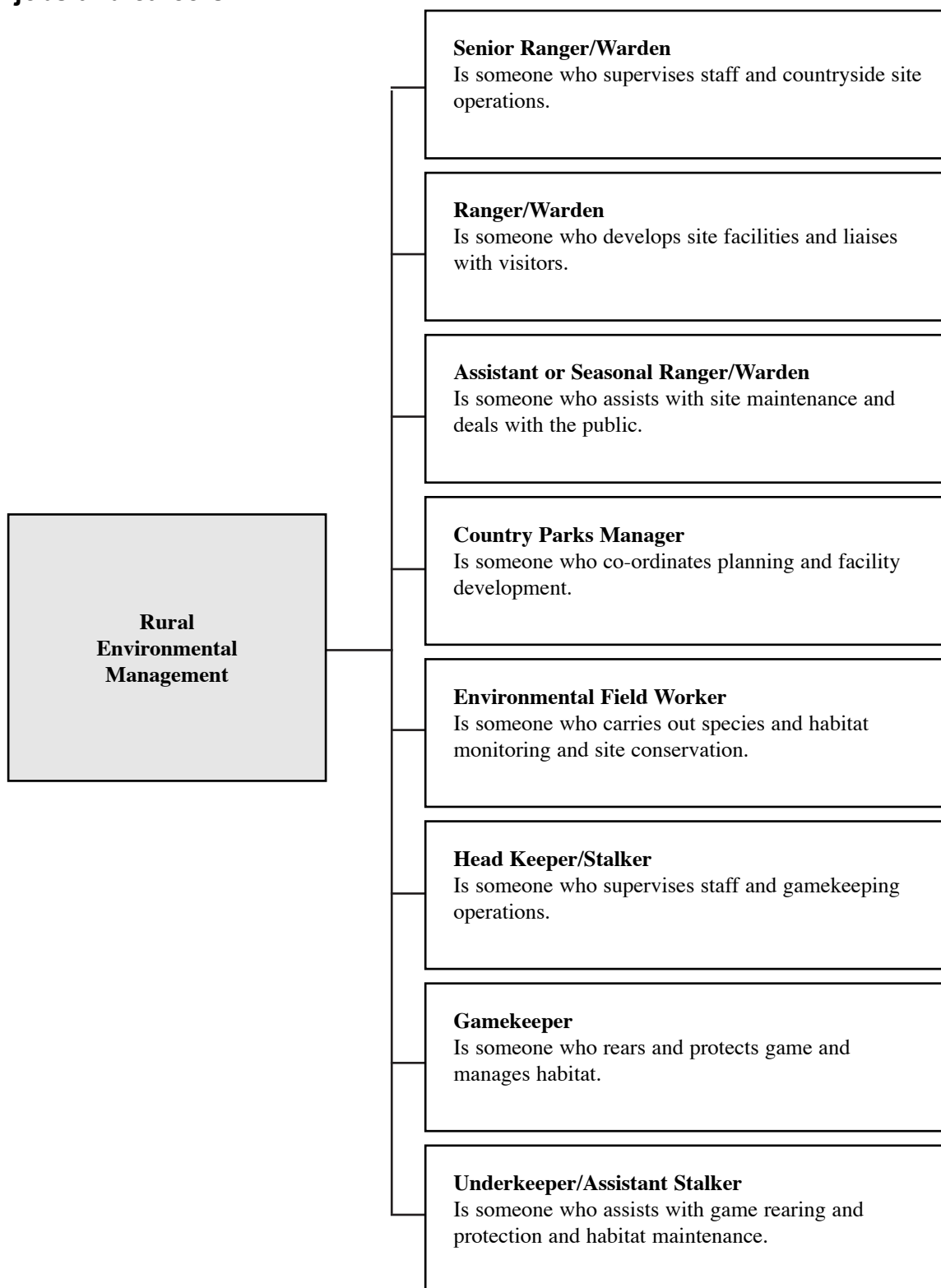
### Entry requirements

- ◆ Entry to an SGA ranges from no formal qualifications to Standard Grades (English and Maths preferred). Previous experience may be required.
- ◆ HNCs/HNDs usually require an appropriate SGA or one or two Highers including Biology or Chemistry and three or four Standard Grades including English, Maths and a Science
- ◆ Degree courses usually require three or four Highers including two or three Maths/Science subjects (Economics or Geography may be accepted), plus Standard Grade English and Maths; or appropriate HNC/HND

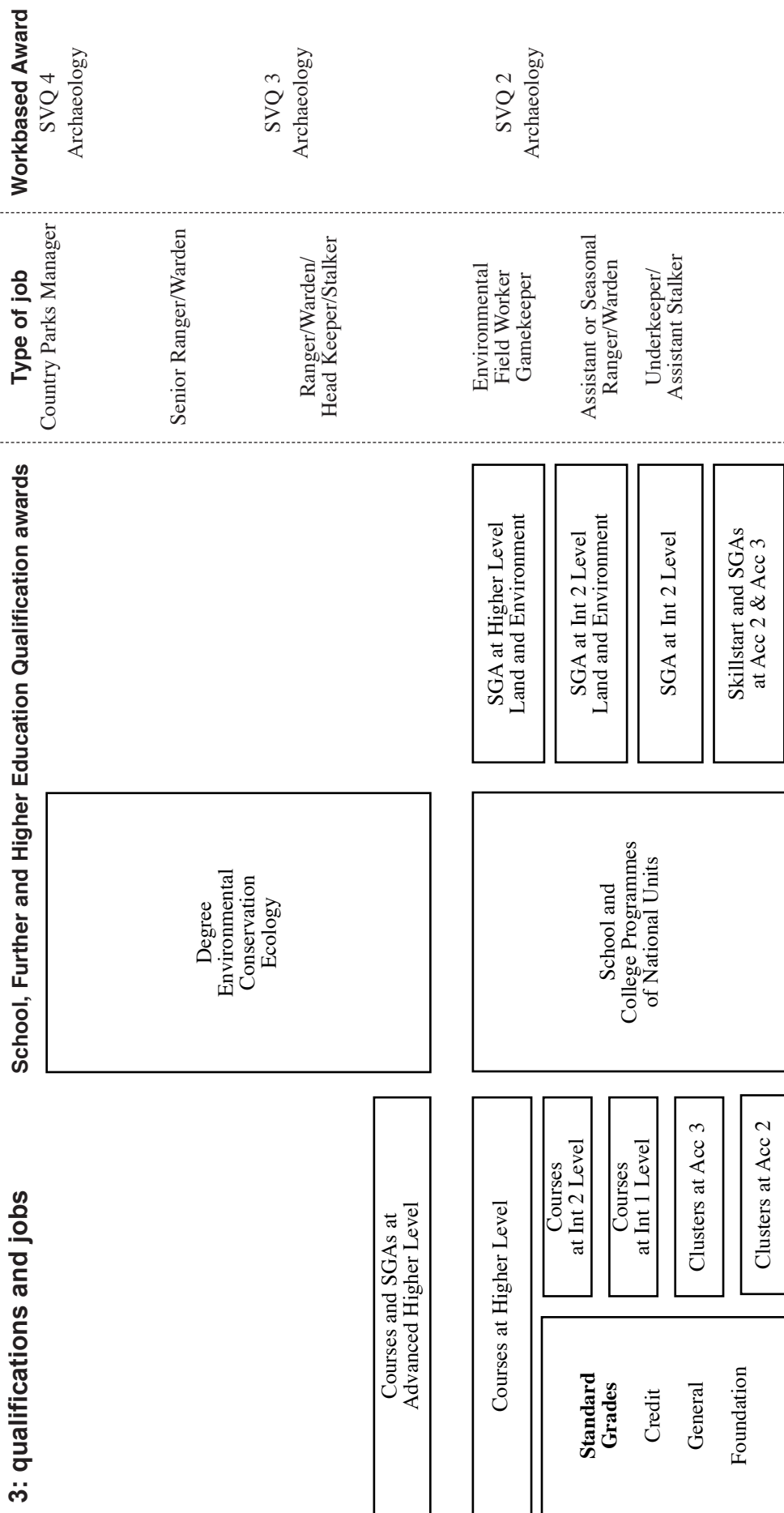
**Note** — entry requirements vary between institutions. Check prospectuses before applying.

# Rural Environmental Management

## 2. jobs and careers



# Rural Environmental Management



This diagram outlines the main qualifications in the Rural Environmental Management area. A full list of all SQA qualifications is on the following pages. People can progress vertically from one qualification to another, eg from a Course at Int 1 to a Course at Int 2. In addition people can progress diagonally from one level of Standard Grade to a higher level of Course or Scottish Group Award (SGA), eg from Standard Grade at General level to Courses or SGAs at Int 2 level.

In this diagram, SVQs and PDAs in the Vocational sector are placed according to current practice and usage in illustrating the relationships and pathways between qualifications, jobs and careers.

# Rural Environmental Management

## 4. qualifications

### **HND**

Applied Environmental Science  
Conservation and Ecology  
Countryside Management  
Countryside Recreation and Conservation Management  
Landscape Management  
Leisure and Recreation Management  
Rural Recreation and Tourism  
Rural Resource Management

### **HNC**

Applied Environmental Science  
Conservation and Ecology  
Countryside Management  
Countryside Recreation and Conservation Management  
Gamekeeping with Wildlife Management  
Habitat Surveying for Nature Conservation  
Landscape Management  
Leisure and Recreation Management  
Rural Recreation and Tourism  
Science and the Environment

### **SGA**

#### **Higher**

Land and Environment

#### **Int 2**

Land and Environment

### **GSVQ III**

Land-Based Industries

### **GSVQ II**

Land-Based Industries

### **National Course**

#### **Adv Higher**

Managing Environmental Resources

#### **Higher**

Interpreting the Natural Environment

Managing Environmental Resources

Natural Environment

#### **Int 2**

Investigating the Natural Environment

Managing Environmental Resources

#### **Int 1**

Managing Environmental Resources

#### **Acc 3**

Managing Environmental Resources Cluster

#### **Acc 2**

Managing Environmental Resources Cluster

**SVQ 4**

Archaeology

Environmental Conservation: Landscapes and Ecosystems

Environmental Management

**SVQ 3**

Archaeology

Environmental Conservation: Landscapes and Ecosystems

Gamekeeping

**SVQ 2**

Archaeology

Environmental Conservation: Landscapes and Ecosystems

Gamekeeping

# Rural Environmental Management

## 5. notes on entry to jobs and careers

### Entry routes

- ◆ **School leavers** — are most likely to obtain full-time employment in gamekeeping by obtaining a Skillseekers position on an estate along with a college course.

Voluntary work to gain experience is vital for jobs as rangers or assistant rangers, even for degree holders. The most likely route would be a National Certificate or HNC course along with voluntary work, leading to a seasonal job and then to full-time employment.

- ◆ **Direct entry into employment** — is unlikely for school leavers although they may be able to get employment and training via Skillseekers.
- ◆ **Adult entry** — the most likely route for mature entrants is a college course, either National Certificate or HNC and relevant voluntary work experience

### SVQ access

SVQs are usually accessed through employment.

### Entry requirements

- ◆ Entry to an SGA ranges from no formal qualifications to three or four Standard Grades including English; Maths and a Science preferred; Geography useful.
- ◆ HNCs/HNDs usually require an appropriate SGA or one or two Highers including a Science (or Geography) and appropriate Standard Grades
- ◆ Degree courses usually require three or four Highers including two Maths/Science subjects (Geography, Geology, Economics and Computing Studies may be accepted as a second Science), and Standard Grades; or appropriate HNC/HND.

**Note** — entry requirements vary between institutions. Check prospectuses before applying.