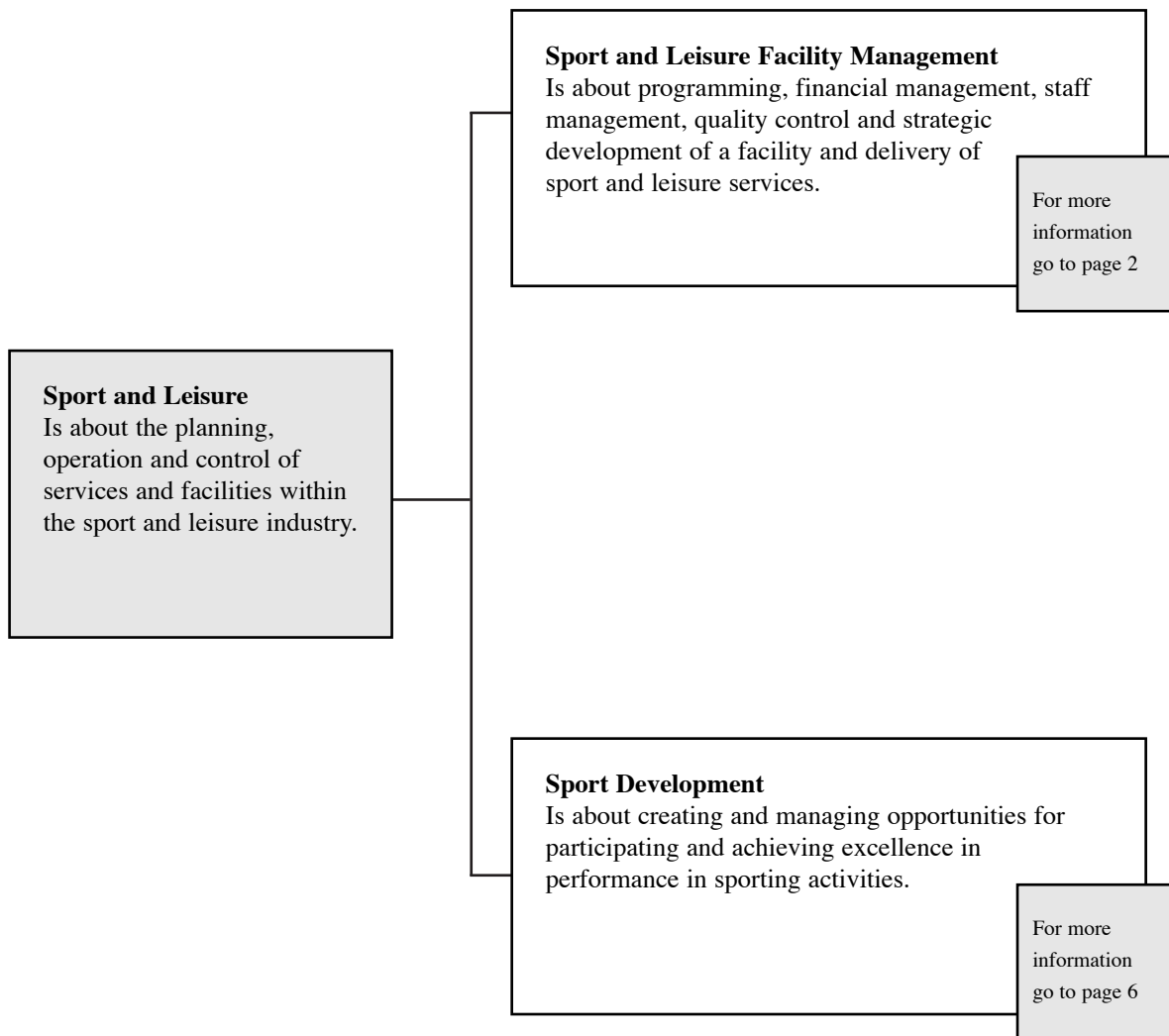


# Sport and Leisure

## 1. career options

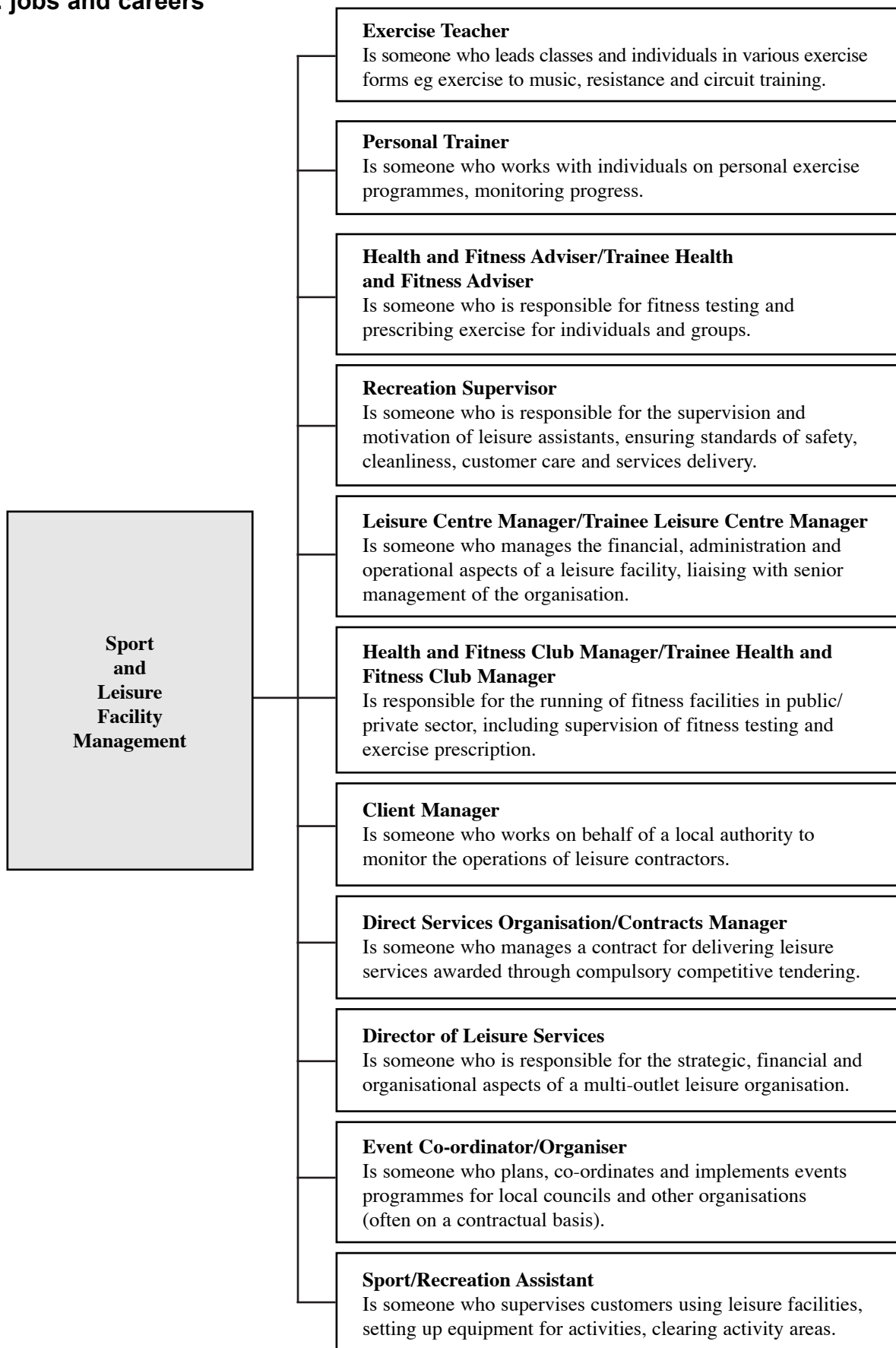


Other career areas related to Sport and Leisure include:

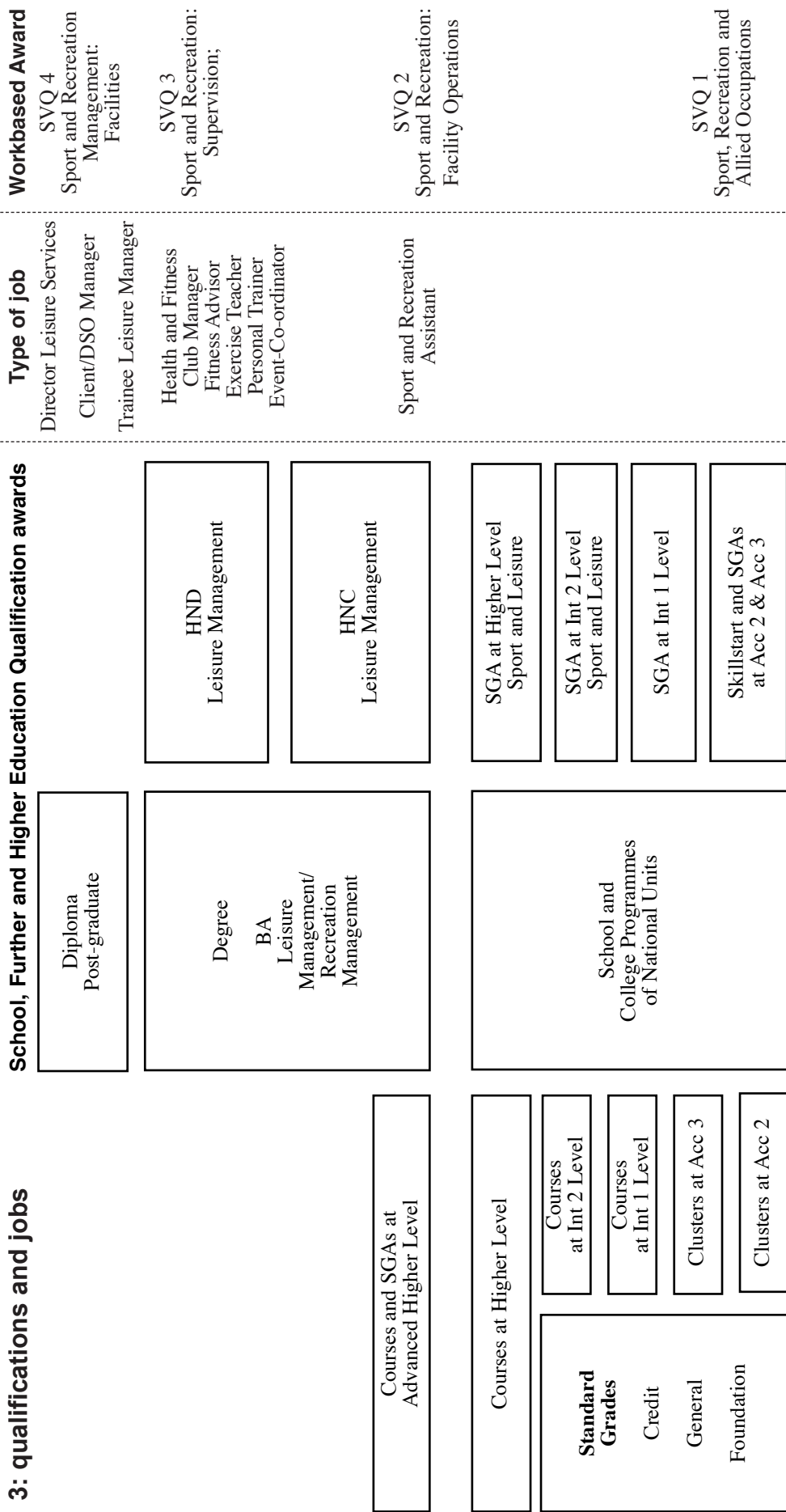
- 16. Performing Arts (Arts Administration and Management)
- 21. Travel and Tourism (Tourism)
- 13. Land and Sea-based Industries (Rural Environmental Management)

# Sport and Leisure Facility Management

## 2. jobs and careers



# Sport and Leisure Facility Management



This diagram outlines the main qualifications in the Sport and Leisure Facility Management area. A full list of all SQA qualifications is on the following pages. People can progress vertically from one qualification to another, eg from a Course at Int 1 to a Course at Int 2. In addition people can progress diagonally from one level of Standard Grade to a higher level of Course or Scottish Group Award (SGA), eg from Standard Grade at General level to Courses or SGAs at Int 2 level.

In this diagram, SVQs and PDAs in the Vocational sector are placed according to current practice and usage in illustrating the relationships and pathways between qualifications, jobs and careers.

# Sport and Leisure Facility Management

## 4: qualifications

### **HND**

Fitness Health and Exercise  
Health and Fitness  
Leisure Management  
Leisure and Recreation Management  
Promotions and Events Management  
Sport and Hospitality Management  
Sports Therapy

### **HNC**

Fitness, Health and Exercise  
Golf Course Management  
Golf Facility Management  
Leisure Management  
Leisure and Recreational Management  
Sport and Health  
Sport and Hospitality

### **SGA**

#### **Higher**

Sport and Leisure

#### **Int 2**

Sport and Leisure

### **GSVQ III**

Leisure and Recreation

### **GSVQ II**

Leisure and Recreation

### **NC Cluster**

Health and Fitness levels 1, 2 and 3

### **National Course**

#### **Higher**

Fitness and Exercise

Sports Organisation

#### **Int 2**

Fitness and Exercise

### **SVQ 4**

Sport and Recreation Management: Facilities

### **SVQ 3**

Sport and Recreation: Coaching Adults (in the context of exercise and fitness)1

Sport and Recreation: Coaching Children (in the context of exercise and fitness)1

Sport and Recreation: Participants with Disabilities (in the context of exercise and fitness)

Sport and Recreation: Supervision

Sport, Recreation and Allied Occupations: Operations and Development

### **SVQ 2**

Sport and Recreation: Coaching and Activity Delivery, Adults (in the context of exercise and fitness)

Sport and Recreation: Coaching and Activity Delivery, Children (in the context of exercise and fitness)

Sport and Recreation: Facility Operations

Sport and Recreation: Sport and Play Installations

Sport, Recreation and Allied Occupations: Activity Leadership

Sport, Recreation and Allied Occupations: Coaching, Teaching and Instruction

Sport, Recreation and Allied Occupations: Operational Services

**SVQ 1**

Sport and Recreation

Sport, Recreation and Allied Occupations

<sup>1</sup> SVQs in Sport and Recreation: Coaching are available in particular contexts e.g. football, rowing, exercise and fitness (6 sub-contexts).

# Sport and Leisure Facility Management

## 5: notes on entry to jobs and careers

### Entry routes

- ◆ **School leavers** — both FE and HE are recognised routes. Applicants completing HNC/HND Leisure Management may be able to enter the second year of degree programmes. Some local authorities leisure services departments offer Skillseeker programmes often leading to employment. Alternative routes may be found through the qualifications of the Institute of Sport and Recreation Management.
- ◆ **Direct entry into employment** — opportunities for direct entry into the industry are rapidly decreasing. Chances of being employed directly will be improved if applicants possess a Royal Life Saving Society Bronze Medallion and a First Aid Certificate. These qualifications are available through short courses run by the RLSS, St Andrew's Ambulance Association, British Red Cross or any Health and Safety Executive Accredited First Aid Trainers' Centre.

Information about job vacancies is published weekly by the Institute of Sport and Recreation Management and the Institute of Baths and Recreation Management.

- ◆ **Adult entry** — very few opportunities exist for adults without some form of recognised training.

### SVQ access

SVQs in Facility Management are all workplace assessed.

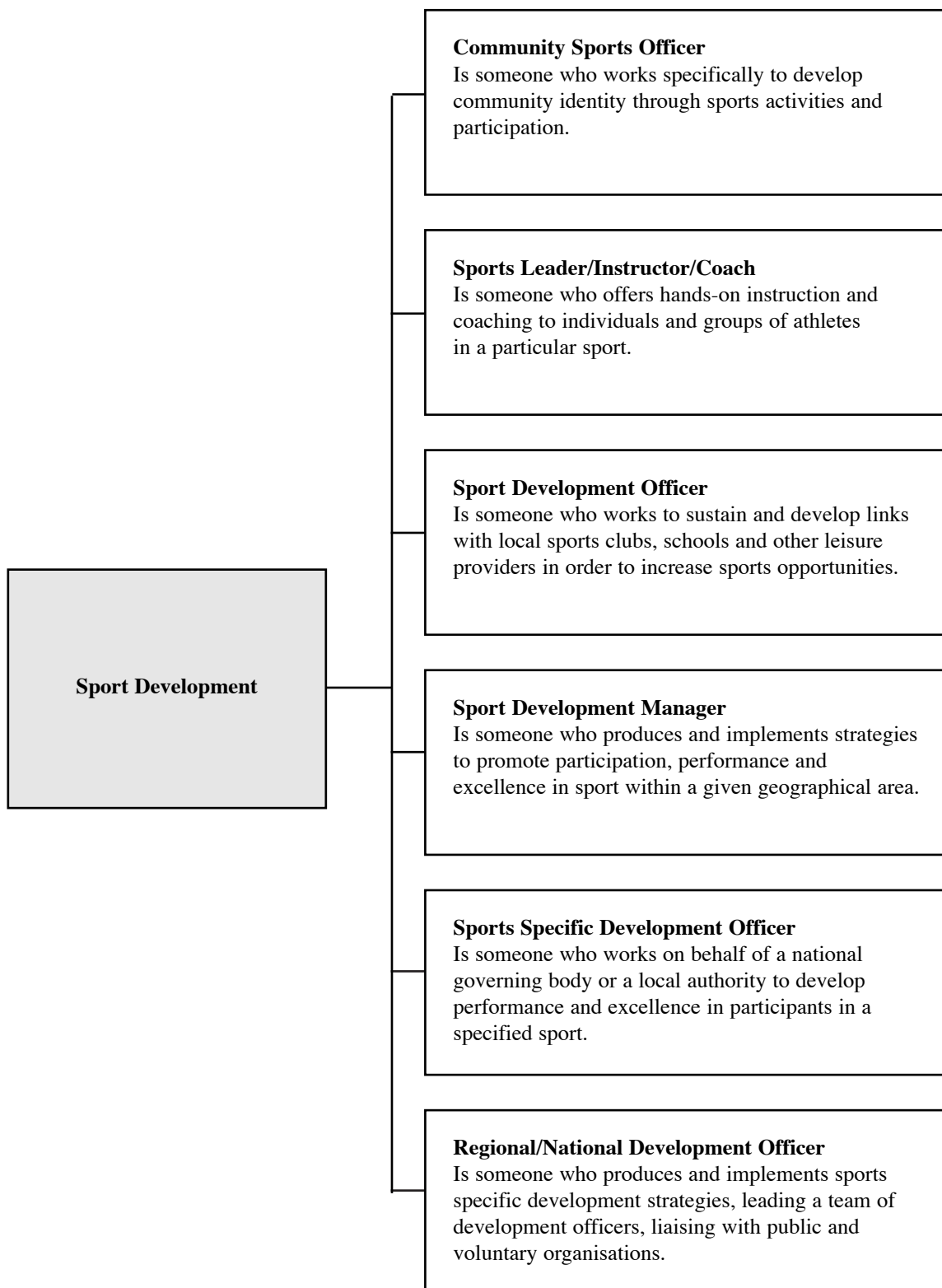
### Entry requirements

- ◆ Entry to an SGA ranges from no formal qualifications to two to four Standard Grades (English and PE useful).
- ◆ HNCs/HNDs usually require an appropriate SGA or two or three Highers preferably including English (a Science and PE required for some courses), and Standard Grades, English and Maths preferred (plus Sciences for some courses).
- ◆ Degree courses usually require three or four Highers including English (Maths and Sciences required for some courses), and Standard Grade English and Maths (plus Physics or Chemistry for some course); or appropriate HNC/HND.

**Note** — entry requirements vary between institutions. Check prospectuses before applying.

# Sport Development

## 2. jobs and careers



# Sport Development

## 3: qualifications and jobs

## School, Further and Higher Education Qualification awards

Post-graduate MSc Sport Coaching

Degree  
BA Sport in the Community  
Sport and Exercise Science

Courses and SGAs at Advanced Higher Level

Courses at Higher Level

**Standard Grades**  
Credit  
General  
Foundation

Courses at Int 2 Level  
Courses at Int 1 Level  
Clusters at Acc 3  
Clusters at Acc 2

HND  
Sports Coaching with Sports Development

HNC  
Sports Coaching with Sports Development

SGA at Higher Level Sport and Leisure

SGA at Int 2 Level Sport and Leisure

SGA at Int 1 Level

Skillstart and SGAs at Acc 2 & Acc 3

## Type of job

Regional/National Development Officer

Sport Development Manager

Sport Development Officer

Community Sports Officer

Sport leader/Instructor/Coach

## Workbased Award

SVQ 4

Sport and Recreation Management: Sports Development

SVQ 3

Sport and Recreation: Development

SVQ 2

Sport and Recreation: Coaching and Activity Delivery

SVQ 1

Sport and Recreation

This diagram outlines the main qualifications in the Sport Development area. A full list of all SQA qualifications is on the following pages. People can progress vertically from one qualification to another, eg from a Course at Int 1 to a Course at Int 2. In addition people can progress diagonally from one level of Standard Grade to a higher level of Course or Scottish Group Award (SGA), eg from Standard Grade at General level to Courses or SGAs at Int 2 level.

In this diagram, SVQs and PDAs in the Vocational sector are placed according to current practice and usage in illustrating the relationships and pathways between qualifications, jobs and careers.

# Sport Development

## 4: qualifications

### **HND**

Health and Fitness  
Leisure Management  
Sport and Exercise Sciences  
Sports Coaching with Sports Development

### **HNC**

Leisure Management  
Sports Coaching with Sports Development  
Sport and Exercise Sciences

### **SGA**

#### **Higher**

Sport and Leisure

#### **Int 2**

Sport and Leisure

### **GSVQ III**

Leisure and Recreation

### **GSVQ II**

Leisure and Recreation

### **NC Cluster**

Health and Fitness levels 1, 2 and 3

### **National Course**

#### **Higher**

Sports Coaching Studies

#### **Int 2**

Leading Sports Activities

### **SVQ 4**

Sport and Recreation Management: Sports Development

### **SVQ 3**

Sport and Recreation: Coaching Adults  
Sport and Recreation: Coaching Children  
Sport and Recreation: Coaching Participants with Disabilities  
Sport and Recreation: Outdoor Education  
Sport and Recreation: Development  
Sport, Recreation and Allied Occupations: Operations and Development

### **SVQ 2**

Sport and Recreation: Coaching and Activity Delivery, Adults  
Sport and Recreation: Coaching and Activity Delivery, Children  
Sport and Recreation: Sport and Play Installations  
Sport, Recreation and Allied Occupations: Activity Leadership  
Sport, Recreation and Allied Occupations: Coaching, Teaching and Instruction  
Sport, Recreation and Allied Occupations: Operational Services

### **SVQ 1**

Sport and Recreation  
Sport, Recreation and Allied Occupations

# Sport Development

## 5: notes on entry to jobs and careers

### Entry routes

- ◆ **School leavers** — both FE and HE are recognised routes. The HNC/HND in Sport Coaching with Sport Development which specifically prepares for this occupational area is a relatively new qualification. Many people currently in employment have come from leisure management and physical education courses. Candidates will often have an interest in a particular sport and have been involved in a sports club in the voluntary sector. Degree level courses related to Sport Development are currently being developed in Scotland.
- ◆ **Direct entry into employment** — there are few opportunities for direct entry into employment. Those who can enter directly will have National Governing Body qualifications and be involved in coaching and administration of voluntary clubs.

Information about job vacancies are published weekly by the Institute of Leisure and Amenity Management.

- ◆ **Adult entry** — very few opportunities exist for adults without some form of recognised training.

### SVQ access

SVQs in Sport Development are assessed in the workplace.

SVQs in Coaching may be gained by working with voluntary organisations such as sports clubs. Further information can be gained from the Scottish Sports Council or National Coaching Foundation.

### Entry requirements

- ◆ Entry to an SGA ranges from no formal qualifications to two to four Standard Grades (English and PE useful).
- ◆ HNCs/HNDs usually require an appropriate SGA or two or three Highers preferably including English (a Science and PE required for some courses), and Standard Grades, English and Maths preferred (plus Sciences for some courses).
- ◆ Degree courses usually require three or four Highers including English (Maths and Sciences required for some courses), and Standard Grade English and Maths (plus Physics or Chemistry for some course); or appropriate HNC/HND.

**Note** — entry requirements vary between institutions. Check prospectuses before applying.