

FOR OFFICIAL USE

--	--	--	--	--	--

X231/13/01

Total
Mark

--

NATIONAL
QUALIFICATIONS
2014

TUESDAY, 13 MAY
3.00 PM – 4.00 PM

MUSIC
ADVANCED HIGHER

Fill in these boxes and read what is printed below.

Full name of centre

--

Town

--

Forename(s)

--

Surname

--

Date of birth

Day Month Year

--	--	--	--	--	--

Scottish candidate number

--	--	--	--	--	--	--	--	--	--

Number of seat

--

The Examination which you are about to sit is based upon a recording of excerpts of music. The text of the questions you will hear is to be found in this answer book and you can follow what the speaker says. Listen carefully to the questions and to the musical excerpts upon which the questions are set.

The number of times each excerpt is played is indicated in each question.

Answer all questions.

Write your answers clearly, in ink, in the spaces provided.

Before leaving the examination room you must give this book to the Invigilator. If you do not, you may lose all the marks for this paper.

Use blue or black ink.



Question 1

Tick **four** features which are present in the music. You will hear the music **twice** with a pause of 10 seconds between playings and a pause of 15 seconds before the next question starts.

You now have 15 seconds to read through the list of features.

Galliard

Harmonics

4
4

Time changes

Ballett

Col legno

Concertino

Polytonality

Modulation

Renaissance

Here is the music for the first time.

Here is the music for the second time.

Total marks Question 1: (4)

Question 2

Listen to the following excerpt and, in the space provided, write the concept which describes this musical form.

Here is the music.

Total marks Question 2: (1)

[Turn over for Question 3 on *Page four*

Question 3

Marks

This question is based on an excerpt from a song.

Listen to the excerpt and follow the rough guide score which is printed on the next page.

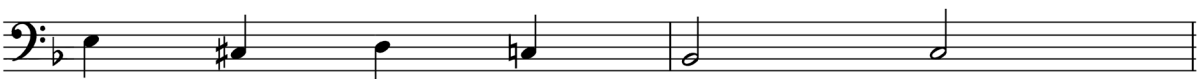
You now have **2 minutes** to read through the questions.

You should write all of your answers on the next page.

- (a) The song is in the key of F major. Describe the first chord by indicating the chord number and position (root position or first or second inversion). 1
- (b) Give the value of the tied note 'A' in bar 7. 1
- (c) Time signatures have been omitted from two places in the score. Correct the score by inserting time signatures in the appropriate places. 1
- (d) Complete bar 14 by inserting the appropriate rest on the staff. 1
- (e) Give a full description of the second chord in bar 22. 1
- (f) Name the cadence in bar 8. 1
- (g) Write 'P' above the bar where this pattern begins for the first time. 1



- (h) Write 'C' above the bar where this cello pattern is heard for the first time. 1



You will now hear the music three more times, with 20 seconds between playings and a pause of 2 minutes before the next question begins.

Here is the music for the first time.

Here is the music for the second time.

Here is the music for the third time.

Question 3 (continued)

WHEN SHE LOVED ME

Randy Newman

(a) Chord: _____

2 3 4

5 6 7

(b) Value: _____

8 9 10

(f) Cadence: _____

11 12 13 14

(d) Rest _____

15 16 17

18 19 20 21

(e) Chord: _____

22 23

Total marks Question 3: (8)

Question 4

Tick **four** features which are present in the music. You will hear the music **twice** with a pause of 10 seconds between playings and a pause of 15 seconds before the next question starts.

You now have 15 seconds to read through the list of features.

- | | | | |
|--------------------------|------------|--------------------------|--------------|
| <input type="checkbox"/> | Plainchant | <input type="checkbox"/> | Hemiola |
| <input type="checkbox"/> | Antiphony | <input type="checkbox"/> | Sprechgesang |
| <input type="checkbox"/> | Air | <input type="checkbox"/> | Diminution |
| <input type="checkbox"/> | Anthem | <input type="checkbox"/> | Mass |
| <input type="checkbox"/> | Suspension | <input type="checkbox"/> | Madrigal |

Here is the music for the first time.

Here is the music for the second time.

Total marks Question 4: (4)

[Turn over for Question 5 on *Page eight*

Question 5

You are asked to compare two excerpts of music. In the column on the left of the answer pages musical concepts are listed. You should select from that column features which are present in the excerpts and identify them with a tick in the appropriate columns (**EXCERPT 1, EXCERPT 2, COMMON TO BOTH EXCERPTS**). The number of marks listed at the foot of each column in **[GRID 2] FINAL ANSWER** indicates the maximum number of concepts to be identified in each column; **marks will be deducted if you exceed that number**.

Both excerpts will be played **three** times, with a pause of 10 seconds between playings.

As you listen, tick the musical concepts used by the composer under the headings given in **[GRID 1]**. The number of ticks required for each excerpt is indicated at the foot of each column. **This grid is for rough work and will not be marked.**

After the three playings of the music you will be given **2 minutes** to copy/re-arrange your answers in **[GRID 2]** and to select and tick the concepts common to both excerpts in the **COMMON** column. **Remember that the total number of concepts for each column is indicated by the marks at the foot of each column.**

You now have **1 minute** to read through the question.

Here is Excerpt 1 for the first time. **Remember to write in [GRID 1].**

Here is Excerpt 2 for the first time.

Here is Excerpt 1 for the second time.

Here is Excerpt 2 for the second time.

Here is Excerpt 1 for the third time.

Here is Excerpt 2 for the third time.

You now have **2 minutes** to complete your answers in **[GRID 2]**.

A warning tone will sound 30 seconds before the start of the next question.

[Question 5—Grids 1 and 2 are on fold-out Pages nine and ten

Question 5 (continued)

[GRID 1] ROUGH WORKING ONLY

CONCEPTS	EXCERPT 1	EXCERPT 2	COMMON TO BOTH EXCERPTS
MELODIC/HARMONIC			
Dominant 7th			
Modal			
Mordent			
Turn			
TIMBRE			
Chamber music			
Consort			
Ripieno			
STRUCTURAL			
Basso continuo			
Pedal			
Ritornello			
Unison/Octave			
STYLES/FORMS			
Classical			
Fugue			
Passacaglia			
Romantic			
	5 ticks	6 ticks	

Question 5 (continued)

[GRID 2] FINAL ANSWER

CONCEPTS	EXCERPT 1	EXCERPT 2	COMMON TO BOTH EXCERPTS
MELODIC/HARMONIC Dominant 7th			
Modal			
Mordent			
Turn			
TIMBRE Chamber music			
Consort			
Ripieno			
STRUCTURAL Basso continuo			
Pedal			
Ritornello			
Unison/Octave			
STYLES/FORMS Classical			
Fugue			
Passacaglia			
Romantic			
	2 MARKS	3 MARKS	3 MARKS

Total marks Question 5: (8)

[Question 6 is on Page twelve

[OPEN OUT]

Question 6

In this question you will hear music for voices and orchestra.

A musical map of the excerpt has been laid out on *Page thirteen*.

You will see that further information is required and should be inserted in the highlighted areas **1 to 5**.

There will now be a pause of 20 seconds to allow you to read through this question.

The music will be played **three times**, with a pause of 15 seconds between playings. You will then have a further 20 seconds to complete your answer.

In the first two playings a voice will guide you through the music. The voice will be heard immediately before the music for each of the highlighted areas is heard. It is not included in the third playing.

Here is the music for the first time.

Here is the music for the second time.

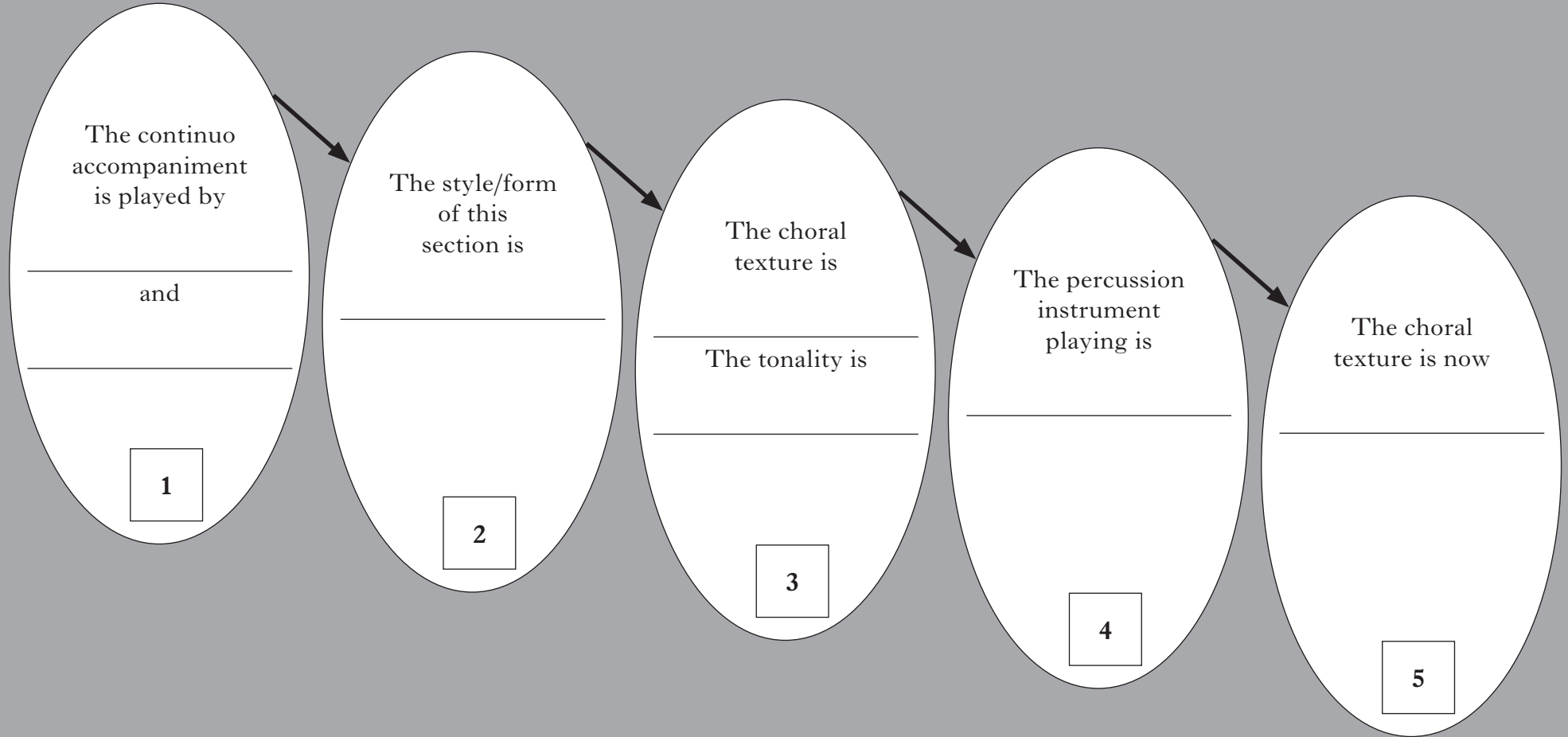
Here is the music for the third time.

Total marks Question 6: (5)

Question 6 (continued)

[X231/13/01]

Excerpt opens



Page thirteen

[Turn over

1 mark	1 mark	1 mark	1 mark	1 mark
--------	--------	--------	--------	--------

Question 8 (continued)

[FINAL ANSWER]

Total marks Question 8: (5)

[END OF QUESTION PAPER]

ACKNOWLEDGEMENT

Question 3 – Graphical music is taken from “*When She Loved Me*” by Randy Newman.
Published by Disney. Reproduced by kind permission of Faber Music Ltd.