



**Arrangements for:
National Progression Award (NPA) in
Formwork**

at SCQF level 5

Group Award Code: GF2W 45

Validation date: January 2012

Date of original publication: May 2012

Version: 01

Acknowledgement

SQA acknowledges the valuable contribution that Scotland's colleges have made to the development of National Qualification Group Awards.

Contents

1	Introduction	1
2	Rationale for the development of the Group Award	2
2.1	Progression diagram.....	3
2.2	Objectives.....	4
2.3	National Progression Award	4
2.4	National Occupational Standards.....	5
2.5	Development	5
2.6	Sector Skills Council — ConstructionSkills	6
3	Aims of the Group Award	7
3.1	Principal aims of the Group Award.....	7
3.2	General aims of the Group Award.....	7
3.3	Target groups	8
3.4	Employment opportunities	8
4	Access to the Group Award.....	9
5	Group Award structure	10
5.1	Framework.....	10
5.2	How the NPA Units map against the NOS	11
5.3	Articulation, professional recognition and credit transfer	11
6	Approaches to delivery and assessment	12
6.1	Content and context.....	12
6.2	Delivery	12
6.3	Core Skills	13
6.4	Assessment.....	13
7	General information for centres	13
8	General information for candidates.....	14
9	Glossary of terms	15

1 Introduction

This is the Arrangements Document for the National Progression Award (NPA) at SCQF level 5 in Formwork, which was originally validated in March 2009 and updated in January 2012 to reflect changes to the National Occupational Standards. This document includes: background information on the development of the Group Award, its aims, guidance on access, details of the Group Award structure, and guidance on delivery.

The National Progression Award (NPA) in Formwork at SCQF level 5 is designed as a stand-alone qualification to equip candidates with the knowledge, understanding and skills required for employment, or for progression to further academic and/or professional qualifications.

The award is aimed at candidates who are interested in pursuing a career in construction related occupations, but who do not necessarily have any prior experience in the construction environment. The diagram on page 3 shows how the NPA in Formwork sits with other qualifications for the sector.

It is also intended that the NPA will become a component of the level 2 Modern Apprenticeship (MA) in Scotland. As indicated by ConstructionSkills¹, the Modern Apprenticeship will consist of three elements:

- ◆ a relevant SVQ
- ◆ Core Skills
- ◆ industry specific training

It is intended that the Award will satisfy the industry specific training requirement of the MA.

The NPA in Formwork has been designed to fit with the new Scottish Qualifications and Credit Framework (SCQF) and, by including it in the MA framework, contributes towards embedding the SCQF into the MA programme.

As part of the MA programme, this Award also supports the goal of providing ‘...security of employment for the trainee whilst developing skills that are relevant within the workplace.’²

¹ Modern Apprenticeship in Construction, Framework Qualifications and Registration Requirements Guidance Document for Training Providers/Modern Apprenticeship Centres in Scotland, January 2009 (update), p.2

² Scottish Government, Skills for Scotland A Lifelong Skills Strategy, September 2007, p. 35

2 Rationale for the development of the Group Award

Construction is a labour-intensive industry that relies heavily on the skills of its workforce to constantly adapt to different projects, teams and changing site conditions, so attracting and retaining a high-quality, qualified workforce is essential.

As the majority of workers lack formal qualifications, the introduction of the Modern Apprenticeship, of which the NPA is a component part, will aim to bridge that gap by contributing to the up-skilling of the sector. Gaining an SVQ also enables workers to obtain a Construction Skills Certification Scheme (CSCS) card or one from any other affiliated scheme; these are the recognised competency-based registration schemes within the industry.

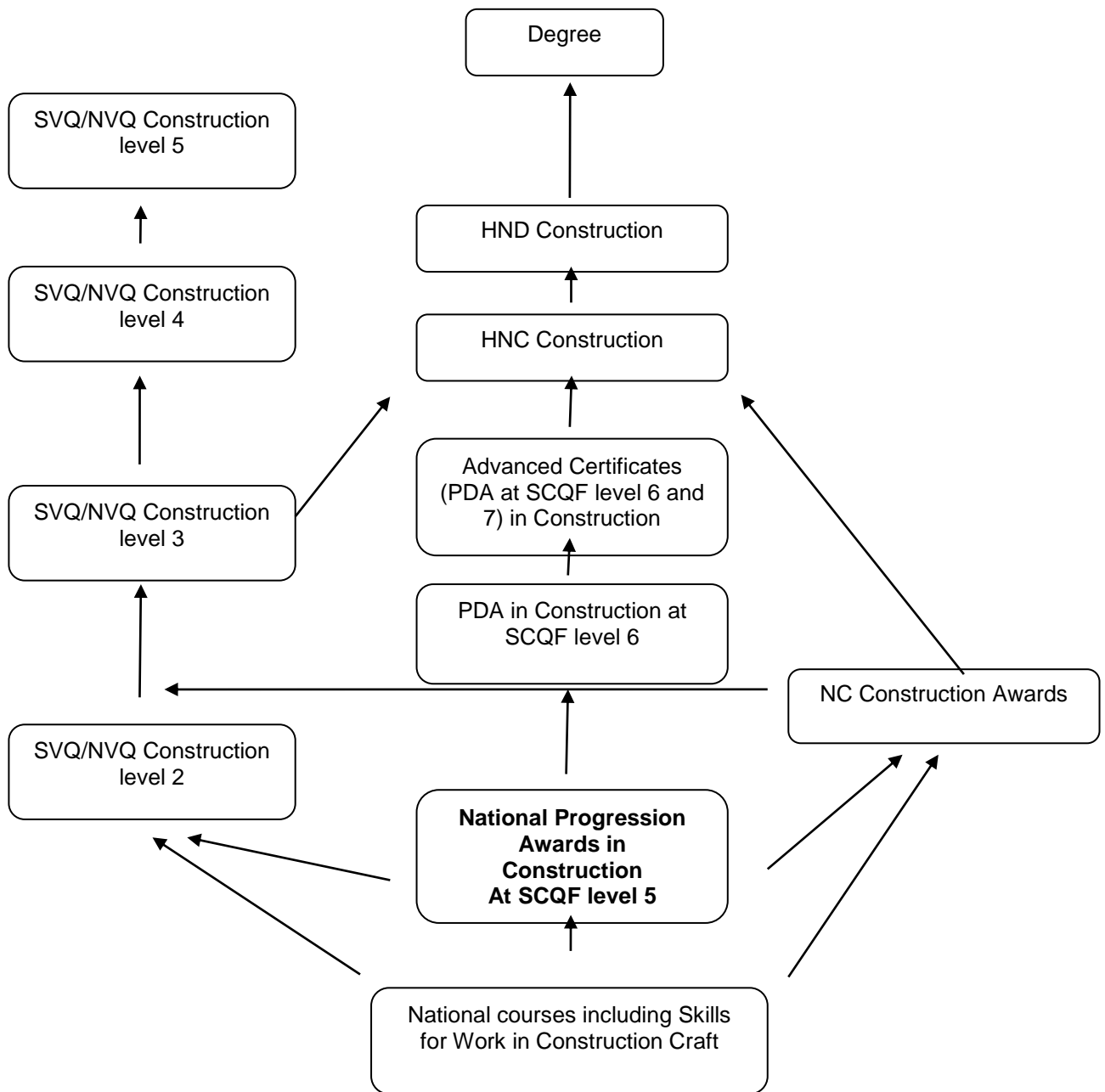
The NPA is not designed to train people to full industry competence. The NPA is aimed at those who do not necessarily have any prior experience of the construction industry and are therefore classed as 'new entrants'. Candidates can then build on the skills and knowledge gained from achievement of the NPA when working towards achieving an SVQ, should they wish to do so. This approach aligns with the goal of the sector qualification strategy to ensure there is a clear differentiation between training for experienced workers and new entrants³.

It is intended that the NPA in Formwork will each allow candidates to develop a broad appreciation of topics based on accepted and recognised industry practices. The award will provide a sound basis for working in the construction industry for a range of potential candidates (please see section 3.3 on target candidate groups)

The diagram on page 3 illustrates how the NPA fits within other, existing qualifications for the Construction industry at a range of levels. Progression routes between qualifications are also identified.

³ ConstructionSkills, Construction Qualification Strategy (CQS) Action Plan – Scotland, February 2007, p. 3

2.1 Progression diagram



Note: The term 'construction' is used here in a general context.

2.2 Objectives

The NPA in Formwork at SCQF level 5 will provide structured opportunities for candidates to experience the world of work and enterprise activity while still enjoying the benefits of close contact with their training/education provider.

The NPA in Formwork is designed to provide:

- ◆ National Construction Qualifications with detailed common standards and learning Outcomes which are recognisable to centres, candidates, employers and professional bodies
- ◆ common mandatory elements of study for various vocational pathways
- ◆ choices of optional Units appropriate to the main career disciplines of each occupation
- ◆ flexible approaches within a national framework
- ◆ the opportunity to preserve and build upon existing good practice
- ◆ compatibility with feeder qualifications, in particular Skills for Work (SfW)
- ◆ compatibility with progression qualifications, eg Scottish Vocational Qualifications (SVQ) in Formwork
- ◆ a response to changing training and educational needs
- ◆ preparation for employment
- ◆ a contribution to the skills, knowledge and understanding required to underpin relevant National Occupational Standards (NOS)
- ◆ a focus on the development of candidates' practical skills, knowledge and understanding which underpins performance in the workplace

2.3 National Progression Award

NPAs are vocational qualifications which provide practical opportunities for developing real skills that are valid and relevant to the world of work.

The NPA in Formwork has been developed at Scottish Credit and Qualifications Framework (SCQF) level 5. This means it is comparable with Credit level Standard Grade and SVQ level 2 in terms of the demand it makes on candidates and the effort required to achieve the Award. It also means that activity and attainment outwith traditional qualifications can now be recorded and awarded.

The NPA in Formwork is composed of National Units which vary in their numbers of guided learning hours, depending on the subject area. The NPA in Formwork stipulates a minimum of 280 guided learning hours to be achieved by completing all mandatory Units.

The mandatory Units introduce the candidate to Workplace Health, Safety and Welfare, Productive Work Practices along with other skills such as moving materials; fabricating, erecting and striking timber; slinging and signaling and operating powered tools and equipment.

This Award has been designed for candidates to gain or develop their skills within the Formwork environment by demonstrating their knowledge of the respective principles, legislation and specifications as well as developing their ability to carry out given practical tasks in specialised construction areas.

2.4 National Occupational Standards

The National Occupational Standards (NOS) for all construction trades are developed and owned by ConstructionSkills SSC. They detail the standards of knowledge and performance that practitioners are expected to meet to be considered competent in their job role. They form the basis of SVQs, which have in turn been used as a foundation for the development of this Award.

The NPA has been revised to take into account recent updates to the NOS — most specifically in relation to recent changes to the ‘core mandatory’ Units concerned with Health and Safety and Productive Working Practices.

The NOS therefore act as a useful benchmark against which to measure occupational competence and for the assembly of a range of development tools, including qualifications.

The NPA Units have been set at a slightly lower level than the SVQ Units — and by association the NOS — to allow for progression to the full SVQ, and are designed to develop and assess defined sets of skills and knowledge in each subject area.

2.5 Development

The procedures involved in the original development of this Award included the writing, vetting and editing of Unit specifications followed by the validation of the Units and Group Award.

A number of organisations were contacted as part of the development process, some providing training materials, and/or reviewing the NPA Units and qualification structures in their respective specialist subject areas. The organisations included private training providers and Further Education colleges who deliver and assess construction related programmes; employers, trade bodies and the Sector Skills Council.

Following the drafting of the Units and structures the proposed documentation was circulated to the above organisations for review and comment. A brief questionnaire was developed to capture feedback on the drafts. The centres contacted offer a mixture of taught and assessed provision, with respondents drawing on their industry experience and knowledge of delivery.

The findings were overall positive, revealing that the Outcomes, Performance Criteria and Evidence Requirements were clear, achievable and appropriate.

Since this NPA was first developed, the relevant NOS on which it is based have been updated by ConstructionSkills. For the English market SQA has also recently developed QCF qualifications, based on these NOS.

The NPA has therefore been reviewed against these two sources to ensure that they are up to date with the latest NOS and associated revisions to recommended qualification structures. In general very few aspects of the structure, or the detail of the NOS, have changed; the most notable differences however are the replacement of the 'generic core mandatory' Units.

These have been updated in terms of content, to reflect greater detail on productive working practices, welfare, sustainability and low/zero carbon. The Unit titles have also changed as a consequence, as follows:

Old NOS reference	Old NOS title	Old NPA/PDA Title
VR01	Conform to general workplace safety	Construction Safety Practices: An Introduction
VR02	Conform to efficient work practices	Efficient Construction Practices: An Introduction
VR03	Move and Handle Resources	Moving and Handling Materials: An Introduction

New NOS reference	New NOS title	New NPA/PDA Title
VR641	Conform to general workplace health, safety and welfare	Workplace Health, Safety and Welfare
VR642	Conform to productive work practices	Conform to Productive Work Practices
VR643	Move, handle or store resources	Move, Handle and Store Resources

The previous Award required candidates to achieve 5 credits (200 hours) from seven mandatory Units. The new Award contains the same mandatory Units updated based on the latest NOS. In each Unit the credit value has been increased to reflect the latest changes to the NOS.

2.6 Sector Skills Council — ConstructionSkills

ConstructionSkills is the Sector Skills Council with strategic responsibilities for education and training in the construction industry. They have been strong supporters of the development of recognised construction vocational and pre-vocational qualifications and have endorsed the development of the NPA in Formwork at SCQF level 5.

ConstructionSkills is an employer-led organisation, which means it identifies and responds to the needs of the industry, acting as an employer voice. ConstructionSkills is leading the way in the development of the Level 2 MAs for the Construction industry in Scotland, having identified a clear requirement and demand from the sector for their introduction.

Industry experts at the Sector Skills Council have contributed to the development of this NPA, ensuring that they meet the needs of the industry and that it is aligned with the corresponding SVQs.

3 Aims of the Group Award

The NPA in Formwork at SCQF level 5 is a vocationally-related qualification which will provide practical opportunities for developing real skills that are valid and relevant to the world of work.

This NPA has been developed at SCQF level 5 in order to fill identified gaps in the qualifications framework for the sector, to link to the appropriate SVQs and form a component part of the respective Modern Apprenticeships.

This means it is comparable with other provision on the SCQF at the same level in terms of the demands made on candidates and the effort required to achieve the Award.

3.1 Principal aims of the Group Award

The NPA in Formwork at SCQF level 5 will develop candidates':

- ◆ practical skills
- ◆ ability to solve problems
- ◆ transferable skills, eg employability skills, work ethic
- ◆ ability to be flexible and work cooperatively with others
- ◆ responsibility for own learning
- ◆ planning, organisational and evaluation skills
- ◆ basic technical skills
- ◆ oral, written and communication skills
- ◆ numerical and graphical skills
- ◆ resource management ability
- ◆ flexibility, knowledge, skills and motivation as a basis for progression

3.2 General aims of the Group Award

The NPA in Formwork at SCQF level 5 will:

- ◆ prepare candidates for careers in the construction civil engineering sector eg site preparation, general construction, alteration and extensions, dismantling work replacements and refurbishments.
- ◆ provide introductory knowledge and skills which are directly relevant to general building operations and construction operations jobs, eg checking and preparing machinery/small plant for use, operating powered tools and equipment, erecting and striking timber systems, fabricating and maintaining formwork systems.
- ◆ enable candidates to make an immediate contribution in employment in the construction environment they are training at the same time as being employed
- ◆ provide opportunities for progression within the SCQF (please refer to the diagram in section 2)
- ◆ form a component part of the Level 2 Modern Apprenticeship in Formwork.

3.3 Target groups

The NPA in Formwork at level 5 is suitable for a wide range of candidates, including:

- ◆ S5 and S6 candidates
- ◆ school-leavers
- ◆ progression candidates (eg Skills for Work)
- ◆ adults returning to education
- ◆ employed candidates who wish to enhance their career prospects
- ◆ unemployed candidates who wish to enhance their job prospects (this includes those currently in the NEET group — ie Not in Education, Employment or Training)

3.4 Employment opportunities

The NPA in Formwork at SCQF level 5 can lead to employment within the construction industry, particularly through Modern Apprenticeships. There are a large number of Modern Apprentices in the construction sector and each year brings a significant increase in the number of apprentice registrations. All available research and projections indicate that this trend will continue in the foreseeable future.

As well as the traditional crafts, this NPA will provide invaluable practical experience and knowledge to candidates who aspire to the more technical professions which exist in construction, such as Civil Engineering and Management.

The NPA in Formwork at SCQF Level 5 is suitable for those returning to work or transferring from other sectors and could be delivered on a full-time or part-time basis.

This Award is based on existing standards and has been developed in order to ensure that UK-wide companies can access suitable and appropriate provision in Scotland.

4 Access to the Group Award

Access to the NPA in Formwork is at the discretion of the centre. There are no specific requirements for prior qualifications, knowledge and skills and/or previous experience. It is assumed that the level of experience of those undertaking the NPAs is that of a 'new entrant'.

However, when the Award is taken as a component of the Modern Apprenticeship the candidate must be in active employment.

The assessments for the NPA in Formwork will be challenging and meaningful, but nonetheless still achievable for all candidates who are prepared to work to gain the award. It is designed to familiarise candidates with a culture of attainment where assessments will challenge them, but do not put unreasonable obstacles between them and real achievement.

For all Units, assessment is based primarily on practical activities and, where possible, holistic assessment is encouraged — particularly the integration of assessment for the Units covering Health & Safety and Efficient Working Practices with those covering craft activities.

Core Skills Entry Level

<i>Numeracy</i>	SCQF 3
<i>Communication</i>	SCQF 3
<i>Working with Others</i>	SCQF 3
<i>Problem Solving</i>	SCQF 3
<i>Information and Communication Technology (ICT)</i>	SCQF 3

SCQF level 3 is the minimum exit level as stated by ConstructionSkills; however, upon commencement of the NPA, the entry level of candidates may be lower than this.

5 Group Award structure

5.1 Framework

To achieve the full award, learners must gain 7 credits (280 hours). All Units are mandatory (M).

Unit title	Status	SCQF level	SCQF credit points	SQA credit value	SQA Unit Code
Mandatory Units — 7 credits required					
Workplace health, safety and welfare	M	5	6	1	H0TD 11
Conform to Productive Work practices	M	5	6	1	H0T4 11
Move, Handle or Store Resources	M	5	6	1	H0T3 11
Erecting and Striking Timber and Proprietary Formwork Systems: An Introduction	M	5	6	1	H0V6 11
Fabricate and Maintain Timber and Proprietary Formwork Systems	M	5	6	1	H0VH 11
Sling and Signal the Movement of Loads	M	5	9	1.5	H0SJ 11
Operate a Powered Tool and Equipment	M	5	3	0.5	H0R5 11

All Units have been subject to the validation process using standard SQA procedures, including review by a representative external to the Steering Group.

5.2 How the NPA Units map against the NOS

NPA Unit	Status in NPA	SVQ Unit title	Construction Skills NOS reference
Workplace Health, Safety and Welfare	M	Conform to General Workplace Health, Safety and Welfare	VR 641
Conform to Productive Work Practices	M	Conform to Productive Work Practices	VR 642
Move, Handle or Store Resources	M	Move, Handle or Store Resources	VR643
Erecting and Striking Timber and Proprietary Formwork Systems: An Introduction	M	Erect and Strike Timber and Proprietary Formwork	VR 510
Fabricating and Maintaining Timber and Proprietary Formwork Systems: An Introduction	M	Fabricate and Maintain Timber and Proprietary Formwork Systems	VR 509
Sling and Signal the Movement of Loads	M	Slinging and Signalling the Movement of Loads	VR 402
Operate a Powered Tool and Equipment	M	Operate Specialised Powered Tools and Equipment	VR 400

5.3 Articulation, professional recognition and credit transfer

Articulation

The NPA in Formwork at SCQF level 5 has been designed as a progression route to the full range of Construction SVQs, particularly SVQ level 2 in Formwork. It was also designed as an articulation route from the Skills for Work Construction awards. This is the first time there has been a clearly-defined pre-vocational/ vocational route for candidates to follow, and for centres to deliver within this construction area.

Credit transfer

There are no current National Units against which credit transfer might be considered.

6 Approaches to delivery and assessment

6.1 Content and context

The NPA in Formwork at SCQF level 5 is designed to equip students with the knowledge, understanding and skills required for success in employment within the construction industry. It is mainly aimed at candidates who are interested in pursuing a career in Formwork.

This award is not designed to train people to full industrial competence. There is an emphasis on developing the basic skills normally taught to an apprentice at the very early stages of time-serving and these basic skills will be very attractive to employers. Candidates can then build on these skills when working towards achieving an SVQ.

The programme should be delivered in the context of familiarisation with terminology, basic concepts and working practices and disciplines, including Health and Safety and Sustainability. It is intended that the NPA in Formwork at SCQF level 5 will develop a broad appreciation of topics based on accepted construction practices.

Candidates may go on to work as carpenters, joiners or formworkers. They will require skills and knowledge in, among others, practical ability, health and safety, interpreting information and working to time scales.

6.2 Delivery

The structure of this qualification allows for a high degree of flexibility in its delivery. Owing to the very practical nature of the award, it is recommended that each teaching/training session should be of a reasonable duration — perhaps three hours.

This award could be offered full-time, part-time, block-release, day-release or evening. Combination of delivery is also a possibility. Such combined study may enable candidates to complete the award within a shorter time period.

There are many opportunities for integrated delivery of Units within the award. Teaching and learning for Workplace Health, Safety and Welfare, Productive Work Practices and Move, Handle or Store Resources should always be integrated with technical/practical Units as much as possible, and assessment should be encouraged to be within the application of these technical/practical Units. The Unit Specifications will identify specific opportunities for integration with other Units.

It is recognised that the NPA in Formwork at SCQF level 5 focuses on the development of the candidates' hand skills and use of tools. Nevertheless, there may be opportunities for the introduction of e-learning during the teaching and delivery of the award. The learning and assessments of the knowledge-based Outcomes can be conducted by either using e-learning methods, or by traditional teaching techniques. For example, formal assessments may make use of IT systems and facilities when available, or alternatively can also use the standard mode of supervising candidates during classroom paper-based assessments.

It is further recognised that health and safety considerations and the age-profile of candidates may present a challenge to centres. However, in order that the quality and integrity of assessments are maintained, centres are reminded that all practical assessments should take place in a realistic working environment with appropriate use of simulation where health and safety considerations are key.

6.3 Core Skills

There are opportunities to integrate Core Skills into the delivery and assessment processes. These opportunities are identified in each of the Unit specifications.

6.4 Assessment

The assessment strategy for the NPA Formwork is designed to ensure an appropriate level of rigour whilst not imposing excessive demands on centres or candidates. The design principles for the award encourage an holistic approach to assessment and this has been adopted in each Unit specification for the award.

Each Unit Specification includes guidance on delivery and assessment and, where appropriate, any potential opportunities for integrated delivery and assessment with other Units.

Centres can decide the order in which Units are delivered, based on candidate recruitment patterns, mode of delivery, resource issues and logical progression dictated by topics and Unit content and level.

Throughout all Units emphasis should be placed where appropriate on the application of Health and Safety. Safe working practices should be looked at in accordance with current safety codes of practice and regulations.

7 General information for centres

Disabled candidates and/or those with additional support needs

The additional support needs of individual candidates should be taken into account when planning learning experiences, selecting assessment instruments, or considering whether any reasonable adjustments may be required. Further advice can be found on our website www.sqa.org.uk/assessmentarrangements.

Internal and external verification

All instruments of assessment used within this Group Award should be internally verified, using the appropriate policy within the centre and the guidelines set by SQA.

External verification will be carried out by SQA to ensure that internal assessment is within the national guidelines for these qualifications.

Further information on internal and external verification can be found in *SQA's Guide to Assessment* (www.sqa.org.uk).

8 General information for candidates

The NPA in Formwork at SCQF level 5 is a practical-based qualification that requires you to spend the majority of your time in a training environment.

The NPA in Formwork at SCQF level 5 is designed to give you the knowledge, understanding and skills to gain employment in the construction industry, or to move onto further qualifications such as to the SVQ in Formwork at SCQF level 5.

It will provide you with the introductory knowledge and skills to be able to erect temporary boarding or sheeting to contain freshly placed and compacted concrete until it has gained sufficient strength to be self-supporting. The appearance of the finished concrete depends on the face texture and stiffness of the formwork.

Occupations are available with a wide variety of construction companies within the building industry. If you wish to investigate career opportunities in the building industry you can contact ConstructionSkills at www.citb.org.uk.

In order to complete the NPA in Formwork at SCQF level 5 you must achieve a minimum of 7 Credits. The Award framework details the Units that you must take to complete the NPA.

You will be assessed on your knowledge and skills developed in each Unit. The assessment may take a number of forms, including multiple choice questions, practical tasks with checklists, and other practical activities when working in teams.

9 Glossary of terms

SCQF: This stands for the Scottish Credit and Qualification Framework, which is a new way of speaking about qualifications and how they inter-relate. We use SCQF terminology throughout this guide to refer to credits and levels. For further information on the SCQF visit the SCQF website at www.scqf.org.uk

SCQF credit points: One SCQF credit point equates to 10 hours of learning. NQ Units at SCQF levels 2–6 are worth 6 SCQF credit points, NQ Units at level 7 are worth 8 SCQF points.

SCQF levels: The SCQF covers 12 levels of learning. National Qualification Group Awards are available at SCQF levels 2–6 and will normally be made up of National Units which are available from SCQF levels 2–7.

Dedicated Unit to cover Core Skills: This is a non-subject Unit that is written to cover one or more particular Core Skills.

Embedded Core Skills: This is where the development of a Core Skill is incorporated into the Unit and where the Unit assessment also covers the requirements of Core Skill assessment at a particular level.

Signposted Core Skills: This refers to the opportunities to develop a particular Core Skill at a specified level that lie outwith automatic certification.

Qualification Design Team: The QDT works in conjunction with a Qualification Manager/Development Manager to steer the development of the National Certificate/National Progression Award from its inception/revision through to validation. The group is made up of key stakeholders representing the interests of centres, employers, universities and other relevant organisations.

Consortium-devised National Certificates/National Progression Awards are those developments or revisions undertaken by a group of centres in partnership with SQA.