



National
Qualifications
SPECIMEN ONLY

S828/76/11

**Fashion and Textile
Technology**

Date — Not applicable

Duration — 1 hour 30 minutes

Total marks — 45

SECTION 1— 15 marks

Attempt the question.

SECTION 2 — 30 marks

Attempt ALL questions.

Write your answers clearly in the answer booklet provided. In the answer booklet you must clearly identify the question number you are attempting.

Use **blue** or **black** ink.

Before leaving the examination room you must give your answer booklet to the Invigilator; if you do not, you may lose all the marks for this paper.



SECTION 1 — 15 marks

Attempt the question

Question 1

A fashion designer is creating a summer collection using these images for inspiration.



- (a) Select **three** key features from the images. Discuss how **each** of these can inspire fashion items designed for this collection. 10
- (b) Evaluate the suitability of using social media to promote this collection. 3
- (c) Describe **two** factors that a clothing manufacturer would need to consider when developing items from this collection for mass production. 2

SECTION 2 — 30 marks

Attempt ALL questions

Question 2

The management of a fast food chain has commissioned new uniforms for all staff in its outlets.

The following design is being considered.

**Fibre content**

Jacket 100% polyester

Apron 100% cotton

Analyse the impact of the properties and characteristics of the textiles and the construction techniques used in this design.

Your analysis should include reference to:

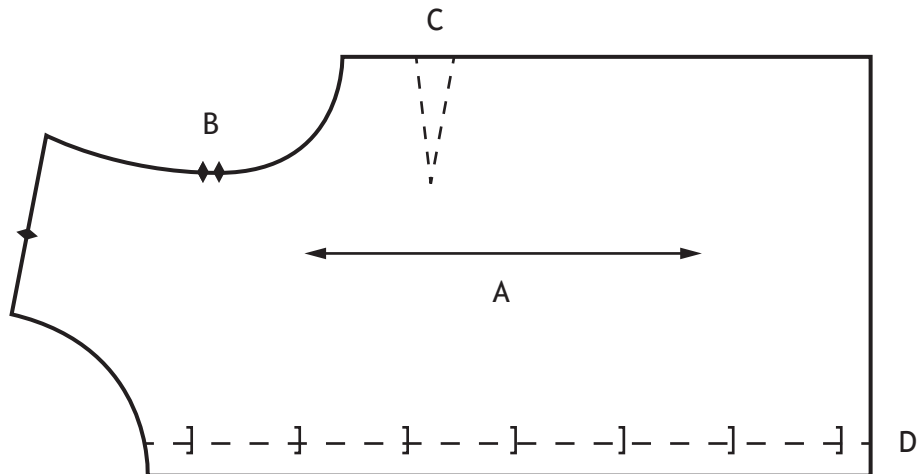
- a minimum of **four** properties and characteristics of textiles used in the manufacture of the uniform
- a minimum of **four** construction techniques used in the manufacture of the uniform.

10

Question 3

A textile manufacturer is making fabrics for a designer of school clothing.
The designer is planning to use the fabric to make school shirts.

- (a) The following paper pattern is to be used for the front of the school shirt.



Explain the importance of each of the symbols on the pattern piece.

4

- (b) Evaluate the suitability of using a woven fabric for the school shirt.

4

- (c) The manufacturer is considering applying the following finishes to the school shirt fabric:

- shrink resistant
- colourfast.

Explain **one** benefit of using **each** finish for the school shirt.

2

Question 4

- (a) Describe and explain **four** principles of design which would need to be considered by the designer when developing an outdoor playsuit for a toddler. 8
- (b) Describe **two** benefits for consumers of including information about the fabric content on the label of the playsuit. 2

[END OF SPECIMEN QUESTION PAPER]

Acknowledgement of Copyright

- Question 1 Jacek Fulawka/shutterstock.com
pogonici/shutterstock.com
pixelliebe/shutterstock.com
vetkit/shutterstock.com
- Question 2 Pat Poseh/shutterstock.com
Yevhen Vitte/shutterstock.com



National
Qualifications
SPECIMEN ONLY

S828/76/11

**Fashion and Textile
Technology**

Marking Instructions

These marking instructions have been provided to show how SQA would mark this specimen question paper.

The information in this publication may be reproduced to support SQA qualifications only on a non-commercial basis. If it is reproduced, SQA should be clearly acknowledged as the source. If it is to be used for any other purpose, written permission must be obtained from permissions@sqa.org.uk.

Where the publication includes materials from sources other than SQA (ie secondary copyright), this material should only be reproduced for the purposes of examination or assessment. If it needs to be reproduced for any other purpose it is the user's responsibility to obtain the necessary copyright clearance.

General marking principles for Higher Fashion and Textile Technology

Always apply these general principles. Use them in conjunction with the specific marking instructions, which identify the key features required in candidates' responses.

- (a) Always use positive marking. This means candidates accumulate marks for the demonstration of relevant skills, knowledge and understanding; marks are not deducted for errors or omissions.
- (b) If a candidate response does not seem to be covered by either the principles or specific marking instructions, and you are uncertain how to assess it, you must seek guidance from your team leader.
- (c) Award marks only where points relate to the question asked. Where candidates give points of knowledge without specifying the context, award marks unless it is clear that they do not relate to the context of the question.
- (d) The following command words are used in the question paper:
 - A Identify
 - B Select
 - C Describe
 - D Explain
 - E Discuss
 - F Evaluate
 - G Analyse

For each command used, the following provides an example of applying the marking principles. For **identify** questions, candidates must list a number of relevant items or facts. These must relate to the context of the question and do not need to be in any particular order.

Up to the total mark allocation for this question:

- award **1 mark** for each accurate relevant point of knowledge linked to the context of the question.

Example question: Identify two features of smart fabrics that would be desirable in textiles to be used for a hillwalking jacket.

Example answer: Breathability.

(1 mark for correct identification of a feature of a performance fabric to be used for a hillwalking jacket)

For **select** questions, candidates must identify a number of relevant items or facts from a given source. These must relate to the context of the question and do not need to be in any particular order.

Up to the total mark allocation for this question:

- award **1 mark** for each accurate item or fact identified from the given source(s), linked to the context of the question.

Example question: Select three key features from the images shown.



Example answer: Triangle shapes, from the roof of the bandstand, the roof of the birdcage and the panels on the parasols. (1 mark for correct identification of a key feature related clearly to the images)

For **describe** questions, candidates must define or give an account of points which must relate to the question. They do not need to be in any particular order. Candidates may provide a number of straightforward points or a smaller number of developed points, or a combination of these.

Up to the total mark allocation for this question:

- award **1 mark** for each accurate relevant point of knowledge linked to the context of the question.

Example question: Describe two benefits to consumers of including fabric content information on the fashion/textile item label.

Example answer: Details of the fibre content might give an indication of how hardwearing the fabric is likely to be. (1 mark for correct description of one use of fabric content information)

For **explain** questions, candidates must make the relationship between points clear, for example by giving accurate relevant points, showing connections between these and the context of the question. Candidates may provide a number of straightforward explanations or a smaller number of developed explanations, or a combination of these.

Up to the total mark allocation for this question:

- award **1 mark** for each accurate relevant point.

Example question: Explain the importance of each of the symbols on the pattern piece shown.

Example answer: Place on the straight grain symbol – the arrow should be placed parallel to the selvedge, so this will ensure that the item hangs correctly. (1 mark for accurate relevant point linked to the symbols on the pattern piece)

For **discuss** questions, candidates must make the relationship between things clear, for example by giving accurate relevant comments showing connections between these and the subsequent potential impact related to the context of the question.

- award **1 mark** for each accurate relevant point linked to the context of the question.

Example question: Discuss the ways these images can influence a spring fashion collection.

Example answer: Key feature: Triangle shapes, from the roof of the bandstand, the roof of the birdcage and on the parasols - triangle shapes used to form the sections of a panelled skirt. (1 mark for accurate relevant point showing the impact on fashion design)

For **evaluate** questions, candidates must make a number of evaluative comments which make a judgement based on the information provided, related to the context of the question.

Up to the mark allocation for this question:

- award 1 mark for each relevant evaluative comment linked to the context of the question.

Example question: Evaluate the suitability of using a knitted fabric for a school sweatshirt.

Example answer: Knitted fabrics have stretch so the sweatshirt will be comfortable to wear for a whole school day. (1 mark for evaluative comment linked to the requirements for a school sweatshirt)

For **analyse** questions, candidates must make a number of comments related to the context of the question. Candidates should identify appropriate pieces of information, the relationship between the identified information and their significance when taken together.

Up to the mark allocation for this question:

- award 1 mark for each relevant point of analysis linked to the context of the question.

Example question: Analyse the impact of the properties and characteristics of the textiles and the construction techniques used in the design of this hillwalking jacket.

Example answer for construction technique: taped seams.

Example explanation: once the seam has been stitched, the stitching is covered with fusible waterproof tape. This seals the holes made by the needle when the seam was stitched.

Example impact on the item: this is a suitable seam finish as it will prevent water passing through to the inside of the jacket, so keeping the wearer dry. (1 mark for an appropriate explanation of a correctly identified construction technique, linked to the requirements for a hillwalking jacket)

Marking instructions for each question

Question			Expected response	Max mark	Additional guidance
1.	(a)		<p>Potential key features (from the images) could include:</p> <ul style="list-style-type: none"> • nature <ul style="list-style-type: none"> – sea, sand, sky, sunny/beach weather • colour palette <ul style="list-style-type: none"> – brights – blue, pink, lemon, some red – neutrals – white, beige – combination of pale/pastel colours with bold/bright colours • shapes <ul style="list-style-type: none"> – triangle – cones/flag/parasol – square/castellated – sandcastle – arch – parasol – stripes – parasol – swirls – cone – small dots – sprinkles • textures <ul style="list-style-type: none"> – rough/grainy – criss-cross – smooth/silky. <p>Possible design features for fashion items for this collection could include:</p> <ul style="list-style-type: none"> • style features for example shape, sleeve type, waist style, neck finish, fastenings, pockets • fabric(s) used for example colour, pattern, fibre content, method of fabric construction, weight • embellishment for example construction details, surface decoration techniques. 	10	<p>Candidates explore ideas about a fashion collection and the impact of an influence on fashion design.</p> <p>They select key features from the sources provided which inspire fashion design, and discuss how each feature could influence aspects of the design for the fashion items in the summer collection.</p> <p>Selection of key features (up to 3 marks):</p> <p>award 1 mark for identification of an appropriate key feature from the source.</p> <p>Discussion of identified key features (up to 7 marks):</p> <p>award 1 mark for each response that demonstrates how a source of inspiration (correctly identified from the images) could inspire fashion items designed for this collection.</p> <p>Award marks where:</p> <ul style="list-style-type: none"> • the candidate demonstrates a clear link to possible inspiration • identifies a design feature that can be clearly visualised • clearly links the way the specified design feature is applied in an item suitable for this collection.

Question			Expected response	Max mark	Additional guidance
			<p>Possible impact of key features identified from the images on the fashion items designed for a summer collection could include:</p> <p>Nature</p> <ul style="list-style-type: none"> the sea <ul style="list-style-type: none"> use of blue/blue and white printed fabric 'wave' edging on neckline/hemline wave-shaped flap on handbag use of clear blue plastic/acrylic embellishments, for example for handbag handles clear blue sky <ul style="list-style-type: none"> use of bright blue fabric sand <ul style="list-style-type: none"> use of printed fabrics with a sand-coloured background use of textured fabrics, for example linen sea/sand/sky <ul style="list-style-type: none"> use of a combination of fabrics in representative colours in a colour-block design sunny/beach weather <ul style="list-style-type: none"> short sleeves/sleeveless low/strapless necklines use of 'cool' fabrics, for example cotton/linen loose fitting styles. <p>Colour palette</p> <ul style="list-style-type: none"> use of bright pink, bright blue and lemon-coloured fabrics, for example in candy stripes/polka dot (one colour of the background, the others for the spots)/checks/wavy lines use of sand-coloured/beige/stone-coloured fabric for the main part of an identified item, with red highlights, for example buttons/motifs/piping. 		<p>Do not award marks for responses that cite inspiration from themes that do not appear in the images.</p> <p>Candidates can choose to answer in bullet points or write a number of linked statements.</p>

Question			Expected response	Max mark	Additional guidance
			<p>Shapes</p> <ul style="list-style-type: none"> • triangle <ul style="list-style-type: none"> – use of handkerchief points at hem of skirt/top/sleeve – panelled skirt (godets) – triangle-shaped flap fastening on bag • square <ul style="list-style-type: none"> – box-shaped jackets – use of square base for handbag/beach bag • castellated <ul style="list-style-type: none"> – use shaped edging for neckline/hem – use of square patchwork pieces to represent castellation near the hem of a skirt – use of trimming close to the edge of the item to represent castellation • arch <ul style="list-style-type: none"> – gathered/dirndl/circular skirt shape – gathered sleeve head – bell sleeves – flounced edging on hems/sleeves • swirls <ul style="list-style-type: none"> – use of fine/lightweight fabrics – gathered skirts/sleeve heads – frilled edgings • small dots <ul style="list-style-type: none"> – use of multi-coloured polka dot fabric – use of beading/sequins. <p>Or any other valid response.</p>		

Question		Expected response	Max mark	Additional guidance
	(b)	<p>Possible responses could include:</p> <p>Suitable:</p> <ul style="list-style-type: none"> • social media has a large audience, so information about the collection will reach many customers • it is free to post on most of the largest platforms, so it won't cost the designer any more to advertise • posts can be shared easily, so details of the collection will have a wider reach than just the designer's followers • social media is interactive, so positive comments may boost sales of the collection • followers will automatically receive details of the collection, so may be more likely to buy • followers can provide feedback on the collection, so it may be adapted to meet customer preferences • social media is used by many celebrities with large followings, so any comments made by them may encourage sales <p>Less suitable:</p> <ul style="list-style-type: none"> • followers may make negative comments about the collection, so potentially reducing sales • any mistakes in the post will reach a large audience, so may reflect badly on potential sales • maintaining a social media presence can be time-consuming, so it may be difficult to keep up with the comments, giving a poor impression of the designer or business. <p>Or any other valid response.</p>	3	<p>Candidates may provide a number of straightforward evaluations or a smaller number of developed evaluations, or a combination of these.</p> <p>Candidates must make evaluative comments on the suitability of the use of social media to promote the summer collection.</p> <ul style="list-style-type: none"> • Award 1 mark for each relevant evaluative comment linked to the context of the question. • Award a further mark for any evaluation that is developed. <p>Candidates may gain marks in a number of ways, up to a maximum of 3 marks.</p> <ul style="list-style-type: none"> • Award a maximum of 3 marks for valid evaluative comments relating to the use of social media to promote the summer collection. • Award a maximum of 2 marks for developed evaluations relating to the same identified aspect of the use of social media to promote the summer collection. <p>Award marks for each response that:</p> <ul style="list-style-type: none"> • identifies a relevant feature of social media • includes an appropriate judgement about the identified feature • is specifically linked to the requirements of the promotion of the summer collection. <p>Do not award marks for general comments about features of social media.</p>

Question			Expected response	Max mark	Additional guidance
	(c)		<p>Possible responses could include:</p> <ul style="list-style-type: none"> the design of the item must closely reflect the original piece the selection of pieces from the collection to take to mass production should reflect the preferences of the manufacturer's target market cost of textiles and components must be low enough to make sure that the item is within the retailer and target group budget all processes, for example decorative techniques, must be able to be completed by machine and/or not require hand finishing to keep costs down textiles and components must be available in sufficient quantity to sustain production the item must be able to be produced in a range of sizes. <p>Or any other valid response.</p>	2	<p>Candidates must describe two factors that would need to be considered when developing items from the collection for mass production.</p> <p>Award 1 mark for an accurate description of a relevant factor linked to the requirements of mass production.</p>

Question			Expected response	Max mark	Additional guidance				
2.			<p>Possible responses could include:</p> <p>Properties and characteristics of polyester Jacket: 100% polyester</p> <p>Property: Strength/abrasion resistance</p> <table><tr><th>Explanation</th><th>Impact</th></tr><tr><td><ul style="list-style-type: none">• durable/withstand wear and tear• withstand frequent washing• withstand agitation• withstand machine washing.</td><td><ul style="list-style-type: none">• suitable as jacket will be worn every day so will remain smart• suitable as food handlers' clothing needs to be washed frequently for hygiene reasons• suitable as uniform may be soiled/stained so will withstand agitation required to remove food stains• suitable as machine washing will save staff time, so jacket will be ready for next shift• suitable as items will be worn every day so will withstand wear and tear well• suitable as may not need to be replaced often, so will be cost effective for the fast food chain</td></tr></table>	Explanation	Impact	<ul style="list-style-type: none">• durable/withstand wear and tear• withstand frequent washing• withstand agitation• withstand machine washing.	<ul style="list-style-type: none">• suitable as jacket will be worn every day so will remain smart• suitable as food handlers' clothing needs to be washed frequently for hygiene reasons• suitable as uniform may be soiled/stained so will withstand agitation required to remove food stains• suitable as machine washing will save staff time, so jacket will be ready for next shift• suitable as items will be worn every day so will withstand wear and tear well• suitable as may not need to be replaced often, so will be cost effective for the fast food chain	10	<p>Candidates must analyse the impact of:</p> <ul style="list-style-type: none">• at least four properties and characteristics of the textiles used. This could include up to four properties or characteristics of cotton, polyester, or a combination of both• at least four textile construction techniques used to make the design. <p>Award 1 mark for each relevant point of analysis linked to the context of the question.</p> <p>Features of a point of analysis include:</p> <ul style="list-style-type: none">• an explanation of how the textile property/construction technique is used in the item• an evaluation of the impact on the requirements of the design for staff. <p>Up to the total mark allocation for this question.</p>
Explanation	Impact								
<ul style="list-style-type: none">• durable/withstand wear and tear• withstand frequent washing• withstand agitation• withstand machine washing.	<ul style="list-style-type: none">• suitable as jacket will be worn every day so will remain smart• suitable as food handlers' clothing needs to be washed frequently for hygiene reasons• suitable as uniform may be soiled/stained so will withstand agitation required to remove food stains• suitable as machine washing will save staff time, so jacket will be ready for next shift• suitable as items will be worn every day so will withstand wear and tear well• suitable as may not need to be replaced often, so will be cost effective for the fast food chain								

Question			Expected response	Max mark	Additional guidance												
			<table><tr><td></td><td><ul style="list-style-type: none">suitable as fabric is unlikely to shrink, so uniform will fit properly after laundering.</td></tr></table> <p>Property: Crease resistance</p> <table><tr><th>Explanation</th><th>Impact</th></tr><tr><td><ul style="list-style-type: none">sheds creases easily.</td><td><ul style="list-style-type: none">suitable as jacket will look smartsuitable as requires little ironing to maintain appearance.</td></tr><tr><td><ul style="list-style-type: none">permanent creasing occurs if washed at high temperatures/spun at high speeds.</td><td><ul style="list-style-type: none">less suitable as this creasing cannot be removed by ironing, so jacket will not look smartless suitable as washing at temperatures required to remove food stains may result in permanent creasing.</td></tr></table> <p>Property: Resistance to chemicals</p> <table><tr><th>Explanation</th><th>Impact</th></tr><tr><td><ul style="list-style-type: none">will resist most cleaning products/acids/alkali.</td><td><ul style="list-style-type: none">suitable as fabric will not be damaged by cleaning fluids, so jacket will remain smart after launderingsuitable as this will make removal of food stains easier, so jacket will remain smart.</td></tr></table>		<ul style="list-style-type: none">suitable as fabric is unlikely to shrink, so uniform will fit properly after laundering.	Explanation	Impact	<ul style="list-style-type: none">sheds creases easily.	<ul style="list-style-type: none">suitable as jacket will look smartsuitable as requires little ironing to maintain appearance.	<ul style="list-style-type: none">permanent creasing occurs if washed at high temperatures/spun at high speeds.	<ul style="list-style-type: none">less suitable as this creasing cannot be removed by ironing, so jacket will not look smartless suitable as washing at temperatures required to remove food stains may result in permanent creasing.	Explanation	Impact	<ul style="list-style-type: none">will resist most cleaning products/acids/alkali.	<ul style="list-style-type: none">suitable as fabric will not be damaged by cleaning fluids, so jacket will remain smart after launderingsuitable as this will make removal of food stains easier, so jacket will remain smart.		
	<ul style="list-style-type: none">suitable as fabric is unlikely to shrink, so uniform will fit properly after laundering.																
Explanation	Impact																
<ul style="list-style-type: none">sheds creases easily.	<ul style="list-style-type: none">suitable as jacket will look smartsuitable as requires little ironing to maintain appearance.																
<ul style="list-style-type: none">permanent creasing occurs if washed at high temperatures/spun at high speeds.	<ul style="list-style-type: none">less suitable as this creasing cannot be removed by ironing, so jacket will not look smartless suitable as washing at temperatures required to remove food stains may result in permanent creasing.																
Explanation	Impact																
<ul style="list-style-type: none">will resist most cleaning products/acids/alkali.	<ul style="list-style-type: none">suitable as fabric will not be damaged by cleaning fluids, so jacket will remain smart after launderingsuitable as this will make removal of food stains easier, so jacket will remain smart.																

Question			Expected response	Max mark	Additional guidance								
			<p>Property: Absorbency</p> <table><tr><th>Explanation</th><th>Impact</th></tr><tr><td><ul style="list-style-type: none">low absorbency.</td><td><ul style="list-style-type: none">suitable as jacket will be quick drying, so will be ready for the next shiftless suitable as will not absorb perspiration, so will be uncomfortable to wearless suitable as dye (grey colour) may fade when washed, so the colour of the jacket will be less smart.</td></tr></table> <p>Property: Stretch</p> <table><tr><th>Explanation</th><th>Impact</th></tr><tr><td><ul style="list-style-type: none">does not stretch.</td><td><ul style="list-style-type: none">suitable as the jacket will retain its shape well, so maintain a smart appearanceless suitable as there will be no ‘give’ in the fabric, so jacket may be less comfortable to wear.</td></tr></table>	Explanation	Impact	<ul style="list-style-type: none">low absorbency.	<ul style="list-style-type: none">suitable as jacket will be quick drying, so will be ready for the next shiftless suitable as will not absorb perspiration, so will be uncomfortable to wearless suitable as dye (grey colour) may fade when washed, so the colour of the jacket will be less smart.	Explanation	Impact	<ul style="list-style-type: none">does not stretch.	<ul style="list-style-type: none">suitable as the jacket will retain its shape well, so maintain a smart appearanceless suitable as there will be no ‘give’ in the fabric, so jacket may be less comfortable to wear.		
Explanation	Impact												
<ul style="list-style-type: none">low absorbency.	<ul style="list-style-type: none">suitable as jacket will be quick drying, so will be ready for the next shiftless suitable as will not absorb perspiration, so will be uncomfortable to wearless suitable as dye (grey colour) may fade when washed, so the colour of the jacket will be less smart.												
Explanation	Impact												
<ul style="list-style-type: none">does not stretch.	<ul style="list-style-type: none">suitable as the jacket will retain its shape well, so maintain a smart appearanceless suitable as there will be no ‘give’ in the fabric, so jacket may be less comfortable to wear.												

Question			Expected response	Max mark	Additional guidance				
			<p>Properties and characteristics of cotton Apron: 100% cotton</p> <p>Property: Strong/abrasion resist/strong when wet</p> <table><tr><th>Explanation</th><th>Impact</th></tr><tr><td><ul style="list-style-type: none">• durable/withstand wear and tear• withstand frequent washing• withstand agitation• withstand machine washing.</td><td><ul style="list-style-type: none">• suitable as apron will be worn every day so will remain smart• suitable as apron is likely to be stained, so will remain smart• suitable as apron may be soiled/stained so will withstand agitation required to remove food stains• suitable as machine washing will save staff time, so apron will be ready for next shift• suitable as may not need to be replaced often, so will be cost effective for the fast food chain• less suitable as fabric may shrink, so apron may not fit properly after laundering.</td></tr></table>	Explanation	Impact	<ul style="list-style-type: none">• durable/withstand wear and tear• withstand frequent washing• withstand agitation• withstand machine washing.	<ul style="list-style-type: none">• suitable as apron will be worn every day so will remain smart• suitable as apron is likely to be stained, so will remain smart• suitable as apron may be soiled/stained so will withstand agitation required to remove food stains• suitable as machine washing will save staff time, so apron will be ready for next shift• suitable as may not need to be replaced often, so will be cost effective for the fast food chain• less suitable as fabric may shrink, so apron may not fit properly after laundering.		
Explanation	Impact								
<ul style="list-style-type: none">• durable/withstand wear and tear• withstand frequent washing• withstand agitation• withstand machine washing.	<ul style="list-style-type: none">• suitable as apron will be worn every day so will remain smart• suitable as apron is likely to be stained, so will remain smart• suitable as apron may be soiled/stained so will withstand agitation required to remove food stains• suitable as machine washing will save staff time, so apron will be ready for next shift• suitable as may not need to be replaced often, so will be cost effective for the fast food chain• less suitable as fabric may shrink, so apron may not fit properly after laundering.								

Question			Expected response	Max mark	Additional guidance												
			<p>Property: Crease resistance</p> <table><tr><th>Explanation</th><th>Impact</th></tr><tr><td><ul style="list-style-type: none">• creases easily• does not shed creases readily.</td><td><ul style="list-style-type: none">• less suitable as creasing will make the uniform look untidy• less suitable as staff are likely to have to spend more time ironing the uniform.</td></tr></table> <p>Property: Resistance to chemicals</p> <table><tr><th>Explanation</th><th>Impact</th></tr><tr><td><ul style="list-style-type: none">• will resist most cleaning products/ acids/alkali.</td><td><ul style="list-style-type: none">• suitable as fabric will not be damaged by cleaning fluids, so apron will remain smart• suitable as this will make removal of food stains easier, so apron will remain smart.</td></tr></table> <p>Property: Absorbency</p> <table><tr><th>Explanation</th><th>Impact</th></tr><tr><td><ul style="list-style-type: none">• highly absorbent• soaks up moisture.</td><td><ul style="list-style-type: none">• suitable as will absorb perspiration, so will be more comfortable for the staff to wear• suitable as will absorb liquid, so apron will afford more protection from splashes/spills• less suitable as will take longer to dry, and may be needed for next shift.</td></tr></table>	Explanation	Impact	<ul style="list-style-type: none">• creases easily• does not shed creases readily.	<ul style="list-style-type: none">• less suitable as creasing will make the uniform look untidy• less suitable as staff are likely to have to spend more time ironing the uniform.	Explanation	Impact	<ul style="list-style-type: none">• will resist most cleaning products/ acids/alkali.	<ul style="list-style-type: none">• suitable as fabric will not be damaged by cleaning fluids, so apron will remain smart• suitable as this will make removal of food stains easier, so apron will remain smart.	Explanation	Impact	<ul style="list-style-type: none">• highly absorbent• soaks up moisture.	<ul style="list-style-type: none">• suitable as will absorb perspiration, so will be more comfortable for the staff to wear• suitable as will absorb liquid, so apron will afford more protection from splashes/spills• less suitable as will take longer to dry, and may be needed for next shift.		
Explanation	Impact																
<ul style="list-style-type: none">• creases easily• does not shed creases readily.	<ul style="list-style-type: none">• less suitable as creasing will make the uniform look untidy• less suitable as staff are likely to have to spend more time ironing the uniform.																
Explanation	Impact																
<ul style="list-style-type: none">• will resist most cleaning products/ acids/alkali.	<ul style="list-style-type: none">• suitable as fabric will not be damaged by cleaning fluids, so apron will remain smart• suitable as this will make removal of food stains easier, so apron will remain smart.																
Explanation	Impact																
<ul style="list-style-type: none">• highly absorbent• soaks up moisture.	<ul style="list-style-type: none">• suitable as will absorb perspiration, so will be more comfortable for the staff to wear• suitable as will absorb liquid, so apron will afford more protection from splashes/spills• less suitable as will take longer to dry, and may be needed for next shift.																


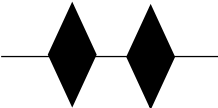
Question			Expected response	Max mark	Additional guidance												
			<p>Property: Warmth/temperature control</p> <table><tr><th>Explanation</th><th>Impact</th></tr><tr><td><ul style="list-style-type: none">breathable.</td><td><ul style="list-style-type: none">suitable as the staff will remain more comfortable as they will be less likely to become overheated.</td></tr></table> <p>Property: Hypoallergenic</p> <table><tr><th>Explanation</th><th>Impact</th></tr><tr><td><ul style="list-style-type: none">naturally hypoallergenichelp to resist allergens.</td><td><ul style="list-style-type: none">suitable as staff are less likely to have an allergic reaction to wearing the jacket.</td></tr></table> <p>Construction techniques used in the jacket</p> <p>Construction technique: Mandarin collar</p> <table><tr><th>Explanation</th><th>Impact</th></tr><tr><td><ul style="list-style-type: none">an upright collartop edges are roundedmeets at the centre front.</td><td><ul style="list-style-type: none">suitable as the style has a smart appearance, so staff will look smartsuitable as other layers may be worn underneath if required without spoiling the appearance of the uniformless suitable as the high collar may be restrictive, so staff may be less comfortable.</td></tr></table>	Explanation	Impact	<ul style="list-style-type: none">breathable.	<ul style="list-style-type: none">suitable as the staff will remain more comfortable as they will be less likely to become overheated.	Explanation	Impact	<ul style="list-style-type: none">naturally hypoallergenichelp to resist allergens.	<ul style="list-style-type: none">suitable as staff are less likely to have an allergic reaction to wearing the jacket.	Explanation	Impact	<ul style="list-style-type: none">an upright collartop edges are roundedmeets at the centre front.	<ul style="list-style-type: none">suitable as the style has a smart appearance, so staff will look smartsuitable as other layers may be worn underneath if required without spoiling the appearance of the uniformless suitable as the high collar may be restrictive, so staff may be less comfortable.		
Explanation	Impact																
<ul style="list-style-type: none">breathable.	<ul style="list-style-type: none">suitable as the staff will remain more comfortable as they will be less likely to become overheated.																
Explanation	Impact																
<ul style="list-style-type: none">naturally hypoallergenichelp to resist allergens.	<ul style="list-style-type: none">suitable as staff are less likely to have an allergic reaction to wearing the jacket.																
Explanation	Impact																
<ul style="list-style-type: none">an upright collartop edges are roundedmeets at the centre front.	<ul style="list-style-type: none">suitable as the style has a smart appearance, so staff will look smartsuitable as other layers may be worn underneath if required without spoiling the appearance of the uniformless suitable as the high collar may be restrictive, so staff may be less comfortable.																

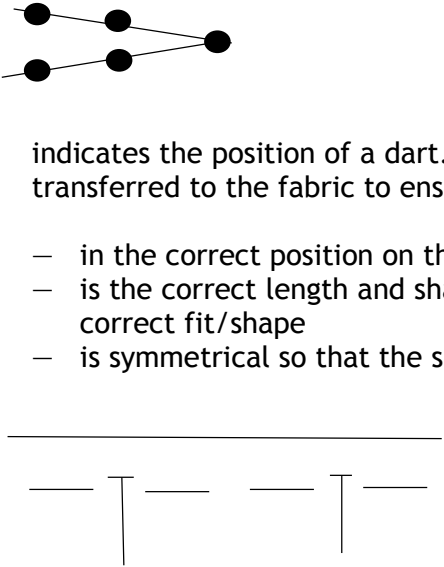
Question			Expected response	Max mark	Additional guidance								
			<p>Construction technique: Piped edges</p> <table><tr><th>Explanation</th><th>Impact</th></tr><tr><td><ul style="list-style-type: none">• piping cord is stitched within a contrasting strip of fabric• this is then stitched between the two layers of fabric when making up the collar/jacket front• the piping is enclosed and shows on the edge of the seam.</td><td><ul style="list-style-type: none">• suitable finish as it gives the jacket a smart appearance• suitable as the piping may be in the signature colours of the fast food chain, so enhancing the corporate image• suitable as the piping may be ordered in different colours to denote the positions of the staff, so making staff easier to identify.</td></tr></table> <p>Construction technique: Set-in sleeves</p> <table><tr><th>Explanation</th><th>Impact</th></tr><tr><td><ul style="list-style-type: none">• armhole follows normal body lines• sleeve head is eased into position, then is stitched into place.</td><td><ul style="list-style-type: none">• suitable as it gives a fitted shape to the jacket, so the uniform will be smart• less suitable as it may restrict the movements of the staff, making the uniform less comfortable to wear.</td></tr></table>	Explanation	Impact	<ul style="list-style-type: none">• piping cord is stitched within a contrasting strip of fabric• this is then stitched between the two layers of fabric when making up the collar/jacket front• the piping is enclosed and shows on the edge of the seam.	<ul style="list-style-type: none">• suitable finish as it gives the jacket a smart appearance• suitable as the piping may be in the signature colours of the fast food chain, so enhancing the corporate image• suitable as the piping may be ordered in different colours to denote the positions of the staff, so making staff easier to identify.	Explanation	Impact	<ul style="list-style-type: none">• armhole follows normal body lines• sleeve head is eased into position, then is stitched into place.	<ul style="list-style-type: none">• suitable as it gives a fitted shape to the jacket, so the uniform will be smart• less suitable as it may restrict the movements of the staff, making the uniform less comfortable to wear.		
Explanation	Impact												
<ul style="list-style-type: none">• piping cord is stitched within a contrasting strip of fabric• this is then stitched between the two layers of fabric when making up the collar/jacket front• the piping is enclosed and shows on the edge of the seam.	<ul style="list-style-type: none">• suitable finish as it gives the jacket a smart appearance• suitable as the piping may be in the signature colours of the fast food chain, so enhancing the corporate image• suitable as the piping may be ordered in different colours to denote the positions of the staff, so making staff easier to identify.												
Explanation	Impact												
<ul style="list-style-type: none">• armhole follows normal body lines• sleeve head is eased into position, then is stitched into place.	<ul style="list-style-type: none">• suitable as it gives a fitted shape to the jacket, so the uniform will be smart• less suitable as it may restrict the movements of the staff, making the uniform less comfortable to wear.												

Question			Expected response	Max mark	Additional guidance				
			<p>Construction technique: Buttons/buttonholes</p> <table><tr><th>Explanation</th><th>Impact</th></tr><tr><td><ul style="list-style-type: none">two-hole flat button in a contrasting colour/colour matches pipingattached with thread matching the jacket colourdouble row of buttons.</td><td><ul style="list-style-type: none">suitable as contrasting colour/matching piping adds to the features of the jacket, giving the uniform a smart appearancesuitable as double line of button fastening will create double thickness of fabric at the front of the jacket, so offer staff more protection from hot splashes if dishes are spiltless suitable as buttons may be lost, so spoil the appearance of the jacket making the staff look untidy.</td></tr></table>	Explanation	Impact	<ul style="list-style-type: none">two-hole flat button in a contrasting colour/colour matches pipingattached with thread matching the jacket colourdouble row of buttons.	<ul style="list-style-type: none">suitable as contrasting colour/matching piping adds to the features of the jacket, giving the uniform a smart appearancesuitable as double line of button fastening will create double thickness of fabric at the front of the jacket, so offer staff more protection from hot splashes if dishes are spiltless suitable as buttons may be lost, so spoil the appearance of the jacket making the staff look untidy.		
Explanation	Impact								
<ul style="list-style-type: none">two-hole flat button in a contrasting colour/colour matches pipingattached with thread matching the jacket colourdouble row of buttons.	<ul style="list-style-type: none">suitable as contrasting colour/matching piping adds to the features of the jacket, giving the uniform a smart appearancesuitable as double line of button fastening will create double thickness of fabric at the front of the jacket, so offer staff more protection from hot splashes if dishes are spiltless suitable as buttons may be lost, so spoil the appearance of the jacket making the staff look untidy.								

Question			Expected response	Max mark	Additional guidance				
			<p>Construction techniques used in the apron</p> <p>Construction technique: Machine embroidery</p> <table><tr><th>Explanation</th><th>Impact</th></tr><tr><td><ul style="list-style-type: none">• diagram of image is uploaded to the machine• machine uses multiple coloured threads to create a replica of the image.</td><td><ul style="list-style-type: none">• suitable as image can represent the fast food chain, so enhance the corporate image of the staff• less suitable as the coloured threads used may run when apron washed, so may spoil the appearance• less suitable as the thread may not withstand the high temperatures needed to remove food stains and laundering at a lower temperature may not remove stains spoiling the appearance of the apron.</td></tr></table>	Explanation	Impact	<ul style="list-style-type: none">• diagram of image is uploaded to the machine• machine uses multiple coloured threads to create a replica of the image.	<ul style="list-style-type: none">• suitable as image can represent the fast food chain, so enhance the corporate image of the staff• less suitable as the coloured threads used may run when apron washed, so may spoil the appearance• less suitable as the thread may not withstand the high temperatures needed to remove food stains and laundering at a lower temperature may not remove stains spoiling the appearance of the apron.		
Explanation	Impact								
<ul style="list-style-type: none">• diagram of image is uploaded to the machine• machine uses multiple coloured threads to create a replica of the image.	<ul style="list-style-type: none">• suitable as image can represent the fast food chain, so enhance the corporate image of the staff• less suitable as the coloured threads used may run when apron washed, so may spoil the appearance• less suitable as the thread may not withstand the high temperatures needed to remove food stains and laundering at a lower temperature may not remove stains spoiling the appearance of the apron.								

Question			Expected response	Max mark	Additional guidance								
			<p>Construction technique: Patch pocket with reinforced top corners</p> <table><tr><th>Explanation</th><th>Impact</th></tr><tr><td><ul style="list-style-type: none">• straight-edged shape• top edge is hemmed• remaining edges are turned under• pocket is topstitched in place, with multiple lines of stitching to strengthen the top corners.</td><td><ul style="list-style-type: none">• suitable as patch pocket provides space for staff to store items, eg order pad, so leaving hands free• suitable as pocket is functional but unobtrusive, so does not spoil the lines of the uniform• suitable as reinforcing stitching may help make sure the pocket does not burst with constant use in the restaurant/kitchen.</td></tr></table> <p>Construction technique: Single-piece waistband</p> <table><tr><th>Explanation</th><th>Impact</th></tr><tr><td><ul style="list-style-type: none">• waistband is cut on the straight grain• waistband is wrapped round to enclose all raw edges at the waist edge and machined in place.</td><td><ul style="list-style-type: none">• suitable as gives a smooth line to the apron, so the uniform will look smart• suitable as it creates a traditional style of apron used by chefs/serving staff, so will be in keeping with the image of the restaurant.</td></tr></table> <p>Or any other valid response.</p>	Explanation	Impact	<ul style="list-style-type: none">• straight-edged shape• top edge is hemmed• remaining edges are turned under• pocket is topstitched in place, with multiple lines of stitching to strengthen the top corners.	<ul style="list-style-type: none">• suitable as patch pocket provides space for staff to store items, eg order pad, so leaving hands free• suitable as pocket is functional but unobtrusive, so does not spoil the lines of the uniform• suitable as reinforcing stitching may help make sure the pocket does not burst with constant use in the restaurant/kitchen.	Explanation	Impact	<ul style="list-style-type: none">• waistband is cut on the straight grain• waistband is wrapped round to enclose all raw edges at the waist edge and machined in place.	<ul style="list-style-type: none">• suitable as gives a smooth line to the apron, so the uniform will look smart• suitable as it creates a traditional style of apron used by chefs/serving staff, so will be in keeping with the image of the restaurant.		
Explanation	Impact												
<ul style="list-style-type: none">• straight-edged shape• top edge is hemmed• remaining edges are turned under• pocket is topstitched in place, with multiple lines of stitching to strengthen the top corners.	<ul style="list-style-type: none">• suitable as patch pocket provides space for staff to store items, eg order pad, so leaving hands free• suitable as pocket is functional but unobtrusive, so does not spoil the lines of the uniform• suitable as reinforcing stitching may help make sure the pocket does not burst with constant use in the restaurant/kitchen.												
Explanation	Impact												
<ul style="list-style-type: none">• waistband is cut on the straight grain• waistband is wrapped round to enclose all raw edges at the waist edge and machined in place.	<ul style="list-style-type: none">• suitable as gives a smooth line to the apron, so the uniform will look smart• suitable as it creates a traditional style of apron used by chefs/serving staff, so will be in keeping with the image of the restaurant.												

Question			Expected response	Max mark	Additional guidance
3.	(a)		<p>Possible responses could include:</p>  <ul style="list-style-type: none"> arrow should be placed on straight grain of the fabric/parallel to the selvedge to ensure that: <ul style="list-style-type: none"> the shirt hangs correctly the fabric does not twist when the shirt is stitched together any stretch required in the fabric of the shirt is in the correct direction fabric can be stretched/eased at a seam.  <ul style="list-style-type: none"> notches/balance marks should be cut outwards from the edge of the pattern piece and matched with another similar notch/balance mark on an adjoining pattern piece. These should be placed together to ensure that: <ul style="list-style-type: none"> the correct pieces of the shirt are put together the pieces of the shirt are matched correctly shirt sleeves are in the correct armhole. 	4	<p>Candidates must explain the importance of each of the symbols on the pattern piece.</p> <p>Award 1 mark for each explanation that:</p> <ul style="list-style-type: none"> is relevant to the pattern symbol includes an appropriate link to making a school shirt. <p>Explanations should be relevant for the pattern symbol and to the use of the pattern to make a school shirt.</p> <p>Do not award marks for responses that are simply descriptions of the pattern symbols.</p>

Question	Expected response	Max mark	Additional guidance
	 <p>The diagram shows two parts. The top part shows a dart with two lines meeting at a point on the right, with four dots at the start of each line. The bottom part shows a horizontal line with two vertical lines extending downwards from it, representing buttonholes.</p> <ul style="list-style-type: none"> • indicates the position of a dart. Markings should be transferred to the fabric to ensure that the dart is: <ul style="list-style-type: none"> – in the correct position on the shirt – is the correct length and shape so the shirt is the correct fit/shape – is symmetrical so that the shirt hangs correctly. • indicates the position of buttonholes. Markings should be transferred to the fabric to ensure: <ul style="list-style-type: none"> – the buttonholes are in the correct place/correct distance from the front edge of the shirt – the buttonholes are evenly spaced so that the shirt appears smart – there are sufficient buttonholes to keep the shirt properly closed/to prevent the shirt gaping. <p>Or any other valid response.</p>		

Question		Expected response	Max mark	Additional guidance
	(b)	<p>Possible responses could include:</p> <p>Stable/rigid</p> <ul style="list-style-type: none"> • suitable as the fabric will keep its shape, so making sure the shirt is smart • suitable as will not stretch, so ensuring a good fit • suitable as the fabric will withstand wear and tear, so helping ensure the shirt lasts the school year/will not need replaced often • suitable as the fabric will not distort, so shirt will withstand agitation in frequent laundering • suitable as a woven structure gives a smart appearance • less suitable as fabric will not stretch/flex so may be less comfortable to wear • less suitable as fabric may fray easily, so any tears/holes may enlarge quickly. <p>Smooth</p> <ul style="list-style-type: none"> • suitable as the smooth feel will make the shirt comfortable to wear • threads are less likely to get pulled, so keep the shirt looking smart. <p>Or any other valid response.</p>	4	<p>Candidates may provide a number of straightforward evaluations or a smaller number of developed evaluations, or a combination of these.</p> <p>Candidates must make evaluative comments on the suitability of the use of woven fabric for a school shirt.</p> <ul style="list-style-type: none"> • Award 1 mark for each relevant evaluative comment linked to the context of the question. • Award a further mark for any evaluation that is developed. <p>Up to the mark allocation for this question:</p> <ul style="list-style-type: none"> • Award a maximum of 4 marks for valid evaluative comments relating to the identified aspects of woven fabric to be used for making a school shirt. • Award a maximum of 2 marks for developed evaluations relating to the same identified aspect of woven fabric to be used for making a school shirt. <p>Award marks for each response that:</p> <ul style="list-style-type: none"> • identifies a relevant property or characteristic of woven fabric • includes an appropriate judgement about the identified property or characteristic • is specifically linked to the requirements for a school shirt. <p>Do not award marks for general comments about properties/characteristics of woven fabric.</p>

Question			Expected response	Max mark	Additional guidance
	(c)		<p>Possible responses could include:</p> <p>Shrink resistant</p> <ul style="list-style-type: none"> chemicals are applied to the shirt fabric so that it maintains its size when it has been laundered. This will make sure: <ul style="list-style-type: none"> that the shirt still fits the pupil after it has been washed that the parent or consumer can buy the correct size with confidence. <p>Colour fast</p> <ul style="list-style-type: none"> chemicals are applied to the shirt fabric so that the colour of the fabric does not fade when it is washed or left in the sunlight. This will make sure that the shirt: <ul style="list-style-type: none"> remains smart as it will be washed frequently will keep the correct uniform colour if it is line dried. 	2	<p>Candidates must explain the benefit of applying each of the finishes to the fabric to be used for the school shirts.</p> <p>Award 1 mark for each explanation that:</p> <ul style="list-style-type: none"> is relevant to the fabric finish includes an appropriate link to the requirements of a school shirt. <p>Explanations should be relevant for the identified fabric finish and to the use of the fabric to make a school shirt.</p> <p>Do not award marks for responses that are simply descriptions of the function of the fabric finishes.</p>

Question		Expected response	Max mark	Additional guidance												
4.	(a)	<p>Possible responses could include:</p> <p>Function</p> <table><tr><th>Description</th><th>Explanation</th></tr><tr><td><ul style="list-style-type: none">the design of the playsuit should keep the child warm.</td><td><ul style="list-style-type: none">the playsuit will be worn outdoors in winter.</td></tr><tr><td><ul style="list-style-type: none">the design should allow the child to move freely.</td><td><ul style="list-style-type: none">important as the child must be able to run/play.</td></tr><tr><td><ul style="list-style-type: none">the design should allow the child to dress/undress easily.</td><td><ul style="list-style-type: none">to make it easier for carers to put on/remove the suitto encourage the child to dress/undress themselves.</td></tr></table> <p>Aesthetics</p> <table><tr><th>Description</th><th>Explanation</th></tr><tr><td><ul style="list-style-type: none">fabric should be smooth/comfortable for the child to wear.</td><td><ul style="list-style-type: none">so the child is happy to wear it.</td></tr></table>	Description	Explanation	<ul style="list-style-type: none">the design of the playsuit should keep the child warm.	<ul style="list-style-type: none">the playsuit will be worn outdoors in winter.	<ul style="list-style-type: none">the design should allow the child to move freely.	<ul style="list-style-type: none">important as the child must be able to run/play.	<ul style="list-style-type: none">the design should allow the child to dress/undress easily.	<ul style="list-style-type: none">to make it easier for carers to put on/remove the suitto encourage the child to dress/undress themselves.	Description	Explanation	<ul style="list-style-type: none">fabric should be smooth/comfortable for the child to wear.	<ul style="list-style-type: none">so the child is happy to wear it.	8	<p>Candidates may provide a number of straightforward points or a smaller number of developed points, or a combination of these.</p> <p>Candidates must describe four relevant design principles a designer would need to consider when designing an outdoor playsuit for a toddler.</p> <p>Award 1 mark for an accurate description of a relevant design principle linked to the requirements of an outdoor playsuit for a toddler, up to a maximum of 4 marks.</p> <p>Candidates should make the relationship between points clear, for example, by giving accurate relevant points, showing connections between these and the context of the question.</p> <p>Candidates must explain the importance of each factor described.</p> <p>Award 1 mark for an accurate explanation that shows a link between:</p> <ul style="list-style-type: none">a relevant design principle described and the requirements of an outdoor playsuit for a toddler, up to a maximum of 4 marks. <p>Award marks for explanations relevant to the suitability of the factor identified and the outdoor playsuit for a toddler.</p> <p>Do not award marks for general explanations of identified design principles.</p>
Description	Explanation															
<ul style="list-style-type: none">the design of the playsuit should keep the child warm.	<ul style="list-style-type: none">the playsuit will be worn outdoors in winter.															
<ul style="list-style-type: none">the design should allow the child to move freely.	<ul style="list-style-type: none">important as the child must be able to run/play.															
<ul style="list-style-type: none">the design should allow the child to dress/undress easily.	<ul style="list-style-type: none">to make it easier for carers to put on/remove the suitto encourage the child to dress/undress themselves.															
Description	Explanation															
<ul style="list-style-type: none">fabric should be smooth/comfortable for the child to wear.	<ul style="list-style-type: none">so the child is happy to wear it.															

Question			Expected response	Max mark	Additional guidance														
			<p>Safety</p> <table><tr><th>Description</th><th>Explanation</th></tr><tr><td><ul style="list-style-type: none">components of the playsuit should not be detachable/too small/sharp.</td><td><ul style="list-style-type: none">the child may swallow components or choke.</td></tr><tr><td><ul style="list-style-type: none">the design should not include draw cord fastenings.</td><td><ul style="list-style-type: none">draw cord fastenings are a choking hazard.</td></tr><tr><td><ul style="list-style-type: none">components, eg hood/mitts should be well secured.</td><td><ul style="list-style-type: none">unsecured components could be lost.</td></tr><tr><td><ul style="list-style-type: none">embellishments should be well secured.</td><td><ul style="list-style-type: none">avoid embellishments being detached and becoming a choking hazard.</td></tr></table> <p>Hygiene</p> <table><tr><th>Description</th><th>Explanation</th></tr><tr><td><ul style="list-style-type: none">all fabrics/components should be (machine) washable.</td><td><ul style="list-style-type: none">it is likely to get dirty while playing, so will need washed frequentlyavoid the additional cost of dry cleaningthe suit needs to maintain its appearance.</td></tr></table>	Description	Explanation	<ul style="list-style-type: none">components of the playsuit should not be detachable/too small/sharp.	<ul style="list-style-type: none">the child may swallow components or choke.	<ul style="list-style-type: none">the design should not include draw cord fastenings.	<ul style="list-style-type: none">draw cord fastenings are a choking hazard.	<ul style="list-style-type: none">components, eg hood/mitts should be well secured.	<ul style="list-style-type: none">unsecured components could be lost.	<ul style="list-style-type: none">embellishments should be well secured.	<ul style="list-style-type: none">avoid embellishments being detached and becoming a choking hazard.	Description	Explanation	<ul style="list-style-type: none">all fabrics/components should be (machine) washable.	<ul style="list-style-type: none">it is likely to get dirty while playing, so will need washed frequentlyavoid the additional cost of dry cleaningthe suit needs to maintain its appearance.		
Description	Explanation																		
<ul style="list-style-type: none">components of the playsuit should not be detachable/too small/sharp.	<ul style="list-style-type: none">the child may swallow components or choke.																		
<ul style="list-style-type: none">the design should not include draw cord fastenings.	<ul style="list-style-type: none">draw cord fastenings are a choking hazard.																		
<ul style="list-style-type: none">components, eg hood/mitts should be well secured.	<ul style="list-style-type: none">unsecured components could be lost.																		
<ul style="list-style-type: none">embellishments should be well secured.	<ul style="list-style-type: none">avoid embellishments being detached and becoming a choking hazard.																		
Description	Explanation																		
<ul style="list-style-type: none">all fabrics/components should be (machine) washable.	<ul style="list-style-type: none">it is likely to get dirty while playing, so will need washed frequentlyavoid the additional cost of dry cleaningthe suit needs to maintain its appearance.																		

Question			Expected response	Max mark	Additional guidance										
			<p>Quality</p> <table><tr><th>Description</th><th>Explanation</th></tr><tr><td><ul style="list-style-type: none">fabrics/components should be of adequate quality.</td><td><ul style="list-style-type: none">enable the suit to be worn/laundered repeatedlyensure the suit lasts till the child outgrows itrepresent good value for money.</td></tr></table> <p>Durability</p> <table><tr><th>Description</th><th>Explanation</th></tr><tr><td><ul style="list-style-type: none">fabrics/components/ construction techniques used should be robust enough to withstand wear.</td><td><ul style="list-style-type: none">enable the suit to withstand the wear resulting from play.</td></tr><tr><td><ul style="list-style-type: none">any embellishments should be as long-lasting as the fabric used.</td><td><ul style="list-style-type: none">ensure that embellishments last the lifetime of the suitensure that the suit maintains its appearance.</td></tr></table> <p>Or any other valid response.</p>	Description	Explanation	<ul style="list-style-type: none">fabrics/components should be of adequate quality.	<ul style="list-style-type: none">enable the suit to be worn/laundered repeatedlyensure the suit lasts till the child outgrows itrepresent good value for money.	Description	Explanation	<ul style="list-style-type: none">fabrics/components/ construction techniques used should be robust enough to withstand wear.	<ul style="list-style-type: none">enable the suit to withstand the wear resulting from play.	<ul style="list-style-type: none">any embellishments should be as long-lasting as the fabric used.	<ul style="list-style-type: none">ensure that embellishments last the lifetime of the suitensure that the suit maintains its appearance.		
Description	Explanation														
<ul style="list-style-type: none">fabrics/components should be of adequate quality.	<ul style="list-style-type: none">enable the suit to be worn/laundered repeatedlyensure the suit lasts till the child outgrows itrepresent good value for money.														
Description	Explanation														
<ul style="list-style-type: none">fabrics/components/ construction techniques used should be robust enough to withstand wear.	<ul style="list-style-type: none">enable the suit to withstand the wear resulting from play.														
<ul style="list-style-type: none">any embellishments should be as long-lasting as the fabric used.	<ul style="list-style-type: none">ensure that embellishments last the lifetime of the suitensure that the suit maintains its appearance.														

Question			Expected response	Max mark	Additional guidance
	(b)		<p>Possible responses could include:</p> <p>Consumers:</p> <ul style="list-style-type: none"> • can avoid allergy-causing fabrics • can gauge the likely performance of the item, for example if the fabric contains lycra it is more likely to keep its shape • can gauge the longevity of the item, for example polyester is more hardwearing than silk • can gauge potential value for money, for example cost of an item made from wool versus acrylic • can gauge the potential care needs of the item • can make a judgement about the item's suitability for its purpose. 	2	Award 1 mark for an accurate description of a relevant benefit linked to the fabric content information.

[END OF SPECIMEN MARKING INSTRUCTIONS]

Acknowledgement of Copyright

Sample Question Svetlana Timonina /shutterstock.com