

# X101/11/02

---

NATIONAL  
QUALIFICATIONS 2013

WEDNESDAY, 22 MAY  
10.05 AM – 11.35 AM

MATHEMATICS  
INTERMEDIATE 2  
Units 1, 2 and  
Applications of Mathematics  
Paper 2

**Read carefully**

- 1 **Calculators may be used in this paper.**
- 2 Full credit will be given only where the solution contains appropriate working.
- 3 Square-ruled paper is provided. If you make use of this, you should write your name on it clearly and put it inside your answer booklet.



## FORMULAE LIST

Sine rule:  $\frac{a}{\sin A} = \frac{b}{\sin B} = \frac{c}{\sin C}$

Cosine rule:  $a^2 = b^2 + c^2 - 2bc \cos A$  or  $\cos A = \frac{b^2 + c^2 - a^2}{2bc}$

Area of a triangle:  $\text{Area} = \frac{1}{2}ab \sin C$

Volume of a sphere:  $\text{Volume} = \frac{4}{3}\pi r^3$

Volume of a cone:  $\text{Volume} = \frac{1}{3}\pi r^2 h$

Volume of a cylinder:  $\text{Volume} = \pi r^2 h$

Standard deviation:  $s = \sqrt{\frac{\sum (x - \bar{x})^2}{n-1}} = \sqrt{\frac{\sum x^2 - (\sum x)^2 / n}{n-1}}$ , where  $n$  is the sample size.

**ALL questions should be attempted.**

*Marks*

1. Multiply out the brackets and collect like terms.

$$(x + 2)(x - 5) - 9x$$

3

2. A company buys machinery worth £750 000.

The value of the machinery depreciates by 20% per annum.

The machinery will be replaced at the end of the year in which its value falls below half of its original value.

After how many years should the machinery be replaced?

**You must explain your answer.**

4

3. Erica works as a masseuse at a health club.

Her March payslip, shown below, is only partly completed.



<b>Name</b> E. Roe	<b>Employee No.</b> 666	<b>Tax Code</b> 710L	<b>Month</b> March
<b>Basic Pay</b> £1350	<b>Overtime Pay</b> –	<b>Bonus</b>	<b>Gross Pay</b>
<b>Nat. Insurance</b> £187.42	<b>Income Tax</b> £297.59	<b>Pension</b>	<b>Deductions</b>
			<b>Net Pay</b>

Erica is paid a bonus of £7.25 for each massage she does.

During March she does 88 massages.

Erica pays 6% of her Gross Pay into her Pension.

Calculate Erica's Net Pay for March.

3

4. A sample of voters was asked how they intended to vote at the next election. The responses are shown below.

<i>Party</i>	<i>Percentage</i>
Scottish National Party (SNP)	35%
Labour (Lab)	30%
Liberal Democrat (Lib Dem)	15%
Conservative (Con)	10%
Others	10%

Construct a pie chart to illustrate this information.

**Show all of your working.**

**3**

5.

<b>Monthly repayments for £10 000 loan</b>		
	With Protection	Without Protection
<b>Safeloan</b>	£226.72	£191.26
<b>Moneyback</b>	£228.41	£196.41
<b>Quickloan</b>	£229.74	£200.71

The table above shows the monthly repayments charged by three companies for a loan of £10 000 repaid over 5 years.

Jennifer takes a £10 000 loan, over 5 years, with protection, from Moneyback.

Calculate the cost of her loan.

**3**

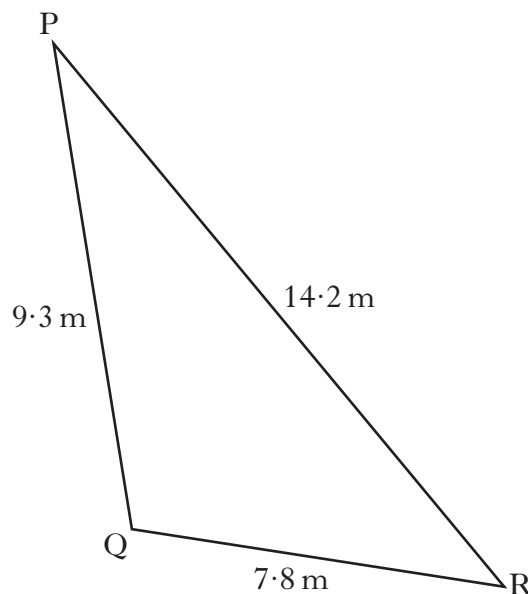
6. Part of Wendy's credit card statement is shown below.

Credit Limit = <b>£1000</b>	
Balance from previous statement	£25·78
Interest	£2·24
Cliff Petrol Station	£36·45
Save More Supermarket	£64·17
H R Brown	£13·25
Total Balance	£A
Minimum repayment	£B
Minimum repayment = 2·5% of balance or £5, whichever is greater	

Calculate the values of A and B.

3

7. Triangle PQR is shown below.



Calculate the size of angle QPR.

3

[Turn over

8. Harry often plays golf and the scores for some of his games are recorded below.

84      78      87      80      81

- (a) For this sample calculate:

- (i) the mean;  
(ii) the standard deviation.

**Show clearly all your working.**



1

3

- (b) His partner for these games is Tony, whose scores are listed below.

104      98      107      100      101

**Write down** the mean and standard deviation of Tony's scores.

2

9. A lead **cube**, of side 10 centimetres, is melted down.

During this process 8% of the metal is lost.

The remaining metal is then made into a **cone**, with radius 8 centimetres.

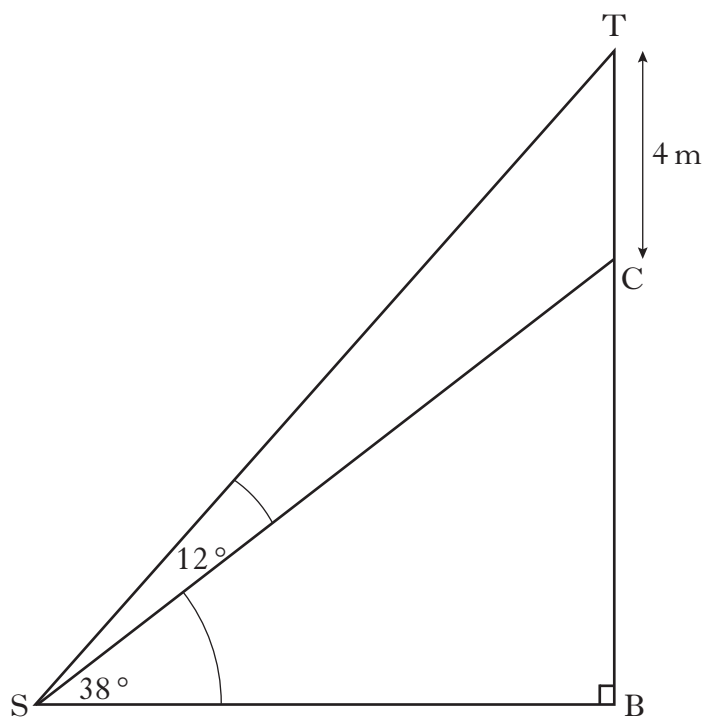
Calculate the height of this cone.

**Give your answer correct to 2 significant figures.**

5

10. A tree surgeon is asked to reduce the height of a tree.

In the diagram below TB represents the original height of the tree and C is the point where the cut is to be made.



The tree surgeon will reduce the height of the tree by 4 metres.

Angle TSC =  $12^\circ$  and angle BSC =  $38^\circ$ .

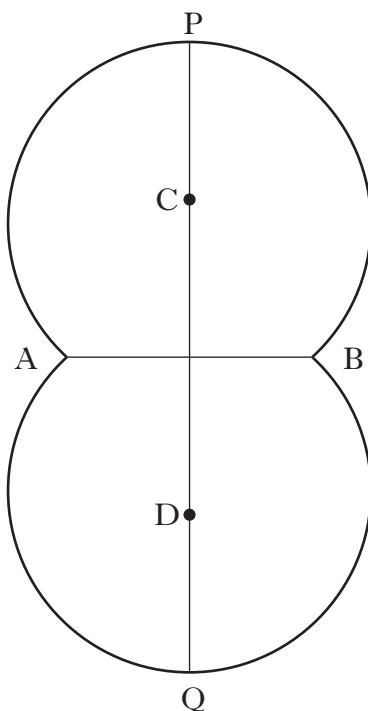
Calculate the height of the tree after it has been cut.

**Do not use a scale drawing.**

5

[Turn over

11. The shape below is used as a logo in an advertising campaign. It is made up from segments of two identical circles.



The points C and D are the centres of the circles and each circle has a radius of 24 centimetres.

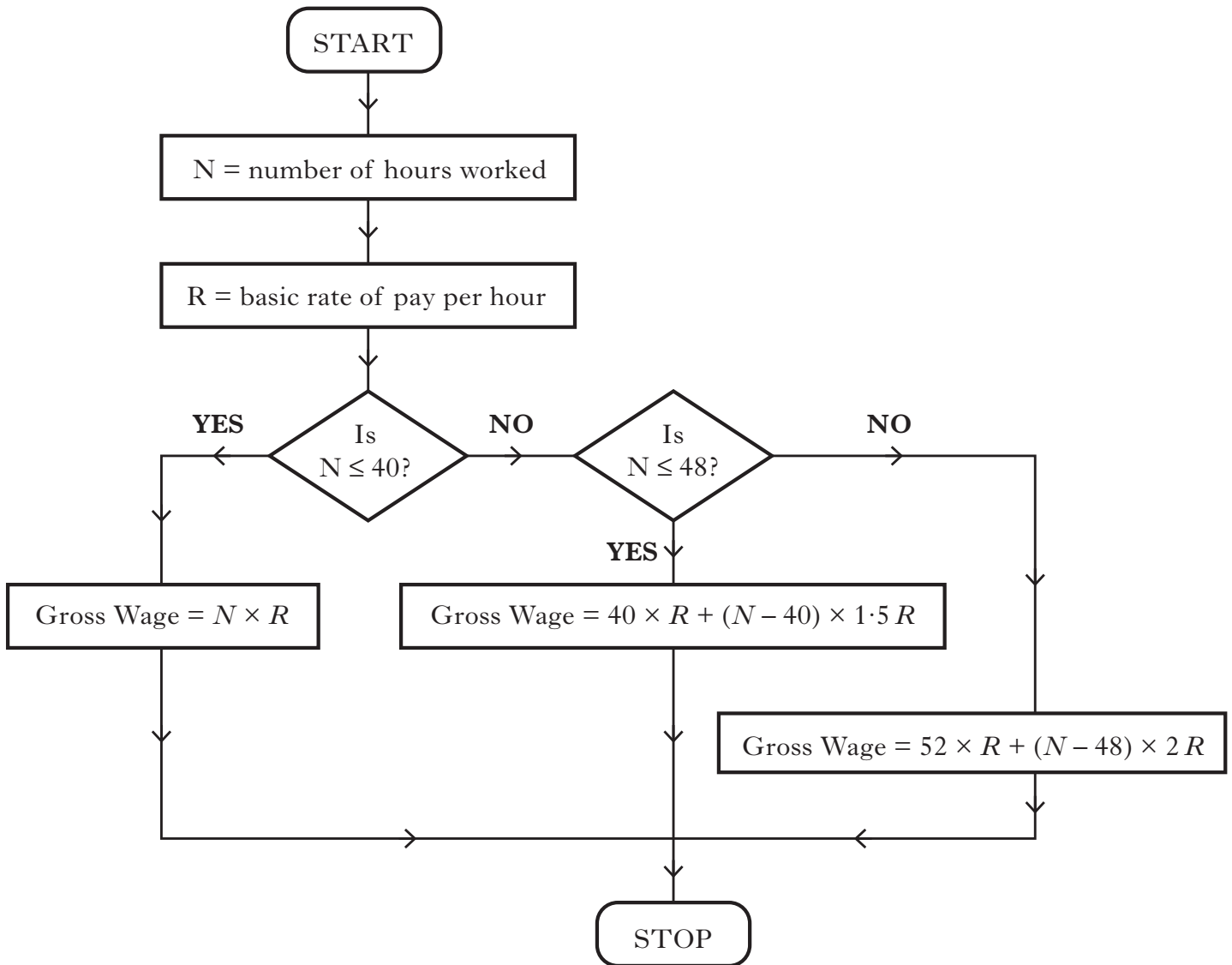
AB is a common chord of length 30 centimetres.

Calculate the height of the logo, represented by the line PQ.

5



12. The flowchart below shows how to calculate a worker's gross weekly wage depending on the number of hours worked and the basic rate of pay per hour.



One week Frank worked 50 hours and had a Gross wage of £364.

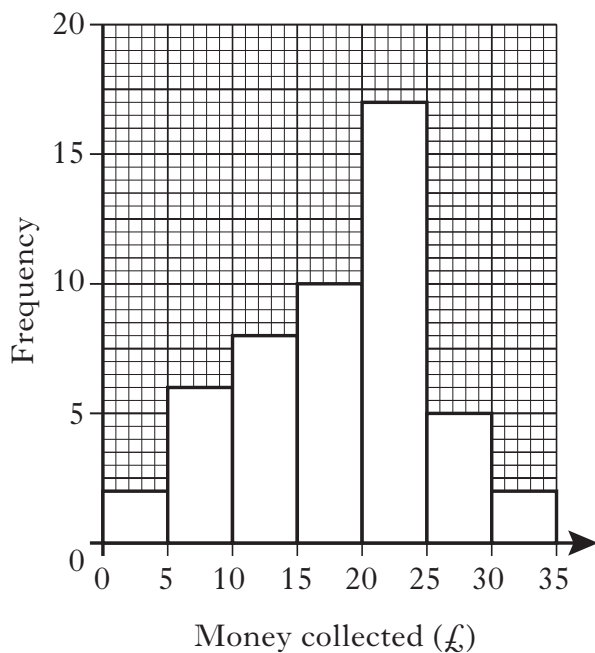
Use the flowchart to calculate his basic rate of pay per hour.

4

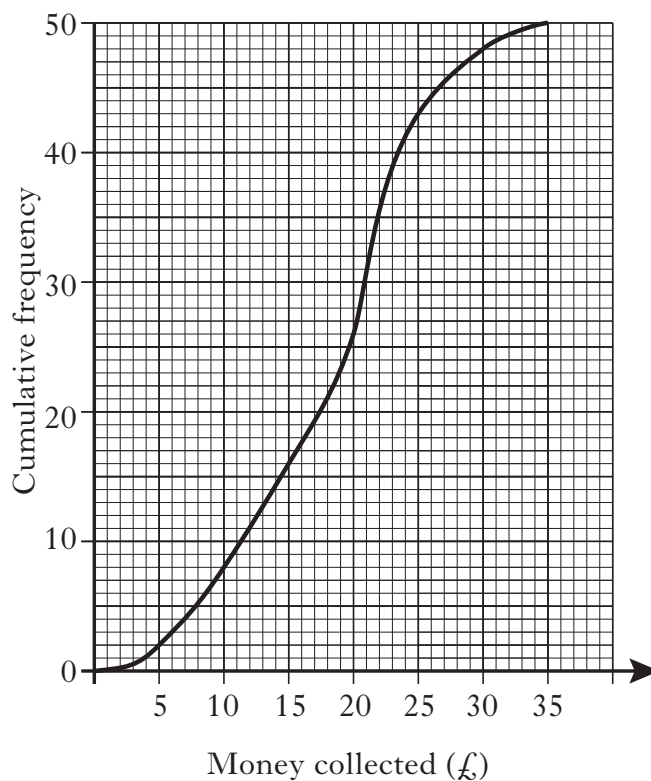
[Turn over

13. Diagrams A and B show a histogram and a cumulative frequency curve respectively.

**Diagram A**



**Diagram B**



(a) Using the data in Diagram A, copy and complete the frequency table below.

Money collected (£)	Frequency
0·01 – 5·00	
5·01 – 10·00	
10·01 – 15·00	
15·01 – 20·00	
20·01 – 25·00	
25·01 – 30·00	
30·01 – 35·00	

**13. (contined)**

- (b) Jim thinks that both Diagram A and Diagram B may have been drawn using the same set of data.

Is he correct?

Explain your answer, showing all your evidence.

**2**

*[END OF QUESTION PAPER]*

**[BLANK PAGE]**