



2013 Graphic Communication

Standard Grade General

Finalised Marking Instructions

© Scottish Qualifications Authority 2013

The information in this publication may be reproduced to support SQA qualifications only on a non-commercial basis. If it is to be used for any other purposes written permission must be obtained from SQA's NQ Assessment team.

Where the publication includes materials from sources other than SQA (secondary copyright), this material should only be reproduced for the purposes of examination or assessment. If it needs to be reproduced for any other purpose it is the centre's responsibility to obtain the necessary copyright clearance. SQA's NQ Assessment team may be able to direct you to the secondary sources.

These Marking Instructions have been prepared by Examination Teams for use by SQA Appointed Markers when marking External Course Assessments. This publication must not be reproduced for commercial or trade purposes.

Part One: General Marking Principles for Graphic Communication Standard Grade General

This information is provided to help you understand the general principles you must apply when marking candidate responses to questions in this Paper. These principles must be read in conjunction with the specific Marking Instructions for each question.

- (a)** Marks for each candidate response must always be assigned in line with these general marking principles and the specific Marking Instructions for the relevant question. If a specific candidate response does not seem to be covered by either the principles or detailed Marking Instructions, and you are uncertain how to assess it, you must seek guidance from your Team Leader/Principal Assessor.
- (b)** Marking should always be positive ie, marks should be awarded for what is correct and not deducted for errors or omissions.

GENERAL MARKING ADVICE: Graphic Communication Standard Grade General

The marking schemes are written to assist in determining the “minimal acceptable answer” rather than listing every possible correct and incorrect answer. The following notes are offered to support Markers in making judgements on candidates’ evidence, and apply to marking both end of unit assessments and course assessments.

Part Two: Marking Instructions for each Question

- | | | | | |
|---|---|-----|---|------|
| 1 | a | i | Colour: Green | KI 1 |
| 1 | a | ii | Colour: Blue/Green/Violet | KI 1 |
| 1 | a | iii | Colour: Red | KI 1 |
| 1 | a | iv | Colour: Red/Red-Orange/Orange/
Yellow-Orange/Yellow | KI 1 |
| 1 | a | v | Colour: Blue-Green/Green/Blue-Violet/
Violet | KI 1 |
| 1 | b | | Effect: Makes the subject stand
out/appears closer. Gives prominence
to the subject of the presentation.
Background further away | KI 1 |
| 1 | c | | A secondary colour | KI 1 |
| 1 | d | | Colour Blue-Green (1) | KI 2 |
| | | | Colour Blue-Violet (1) | |

Total KI 9

2	a	A	Lamp	(1)	KI 7
		B	Switch	(1)	
		C	Socket	(1)	
		D	Window	(1)	
		E	Shower Tray	(1)	
		F	Wash Basin	(1)	
		G	Sinktop	(1)	

2	b	Floor			KI 1
----------	----------	-------	--	--	-------------




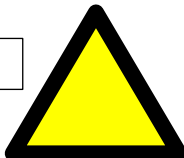
2	c	Plan 1	Site		KI 2
		Plan 2	Block/Location		

Total KI 10

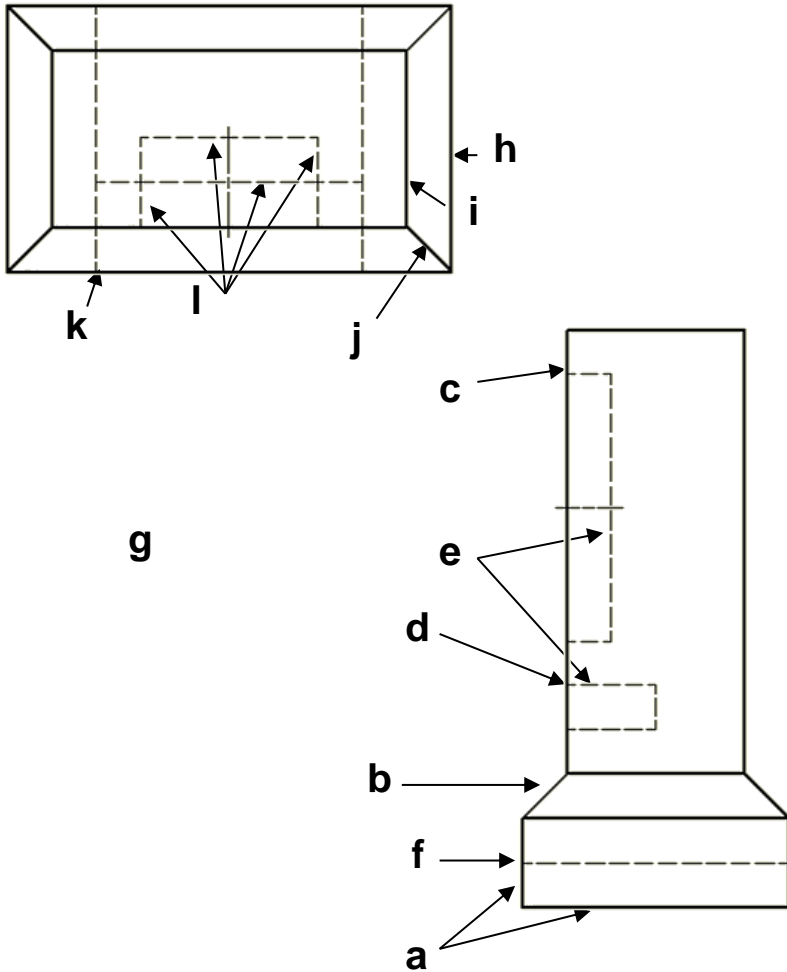
3	a	P	Oblique	KI 4
		Q	1 Pt Perspective	
		R	2 Pt Perspective	
		S	Isometric	
3	b	Because circles remain circles and are easier to draw		KI 1
3	c	Angle M	45 Deg	KI 1
3	d	Vanishing		KI 1
3	e	Line L	Horizon/eye level	KI 1
3	f	Angle N	30 Deg	KI 1

Total KI 9

4

Sign Type		Background Colour	Border Colour
Mandatory	 	Blue	None
Prohibition		White	Red
Warning		Yellow	Black

KI 7



Question 5

End Elevation

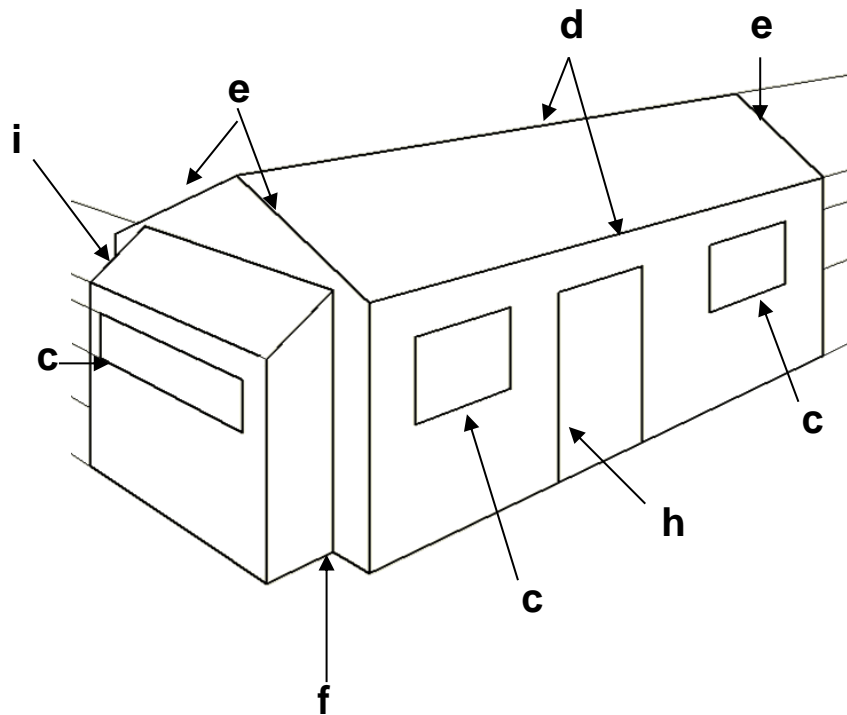
- (a) Base length and height 1
- (b) 45 degree (both) 1
- (c) Position and size of clock face 1
- (d) Position and size of slot 1
- (e) Hidden detail, all 6 1
- (f) Hidden detail and position 1
- (g) Projection correct, either view 1

Plan

- (h) Line 60, both 1
- (i) Line 40, both 1
- (j) Angled lines 2 from 4 1
- (k) Hidden detail, both 1
- (l) Hidden detail, 3 from 4 1

Total 12



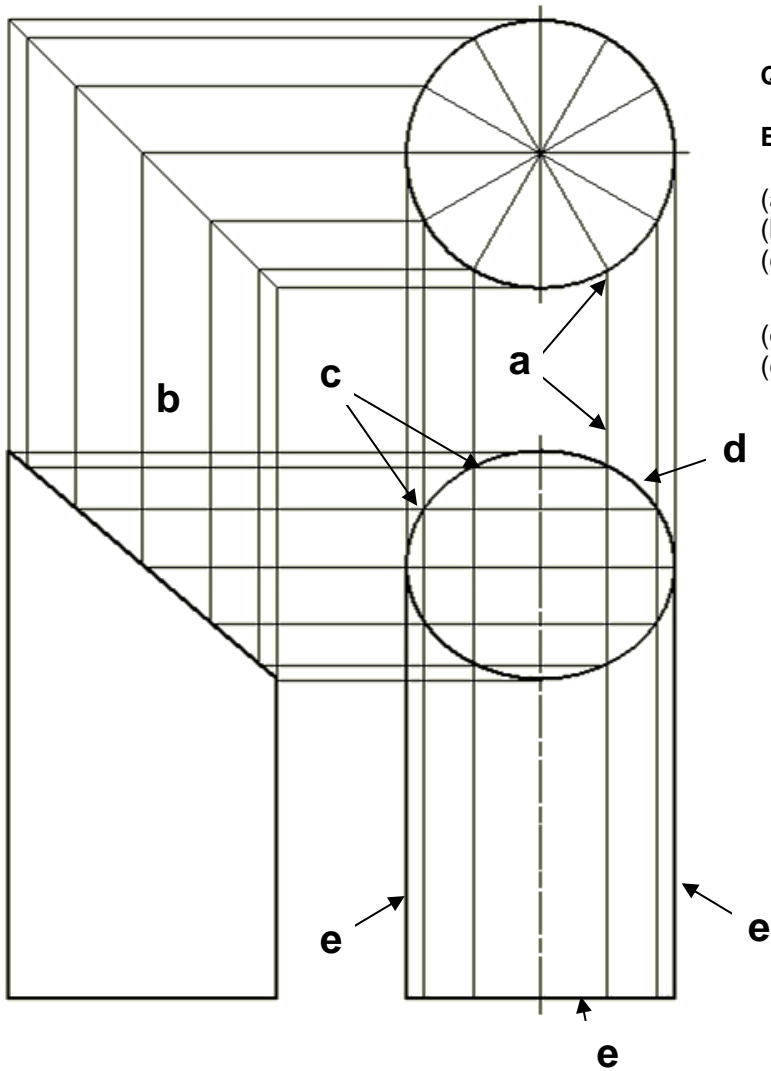


Question 6

- | | | |
|-----|--|---|
| (a) | Sketch in good perspective | 1 |
| (b) | Caravan in good proportion | 1 |
| (c) | Windows, all three | 2 |
| | 2 out of 3 for 1 mark | |
| (d) | Roof lines, right, both | 1 |
| (e) | Roof lines to apex, 2 from 3 | 1 |
| (f) | Position of extension | 1 |
| (g) | Extension in good perspective & proportion | 1 |
| (h) | Door | 1 |
| (i) | Extension slope | 1 |

Total 10





Question 7

Elevation

- (a) Divide Plan and project to Elevation **1**
- (b) Project Divisions to End Elevation **1**
- (c) Establish curve points **2**
8- 11 for 1, 12 for 2
- (d) Good freehand curve **1**
- (e) Body outlined, all three **1**

Total 6

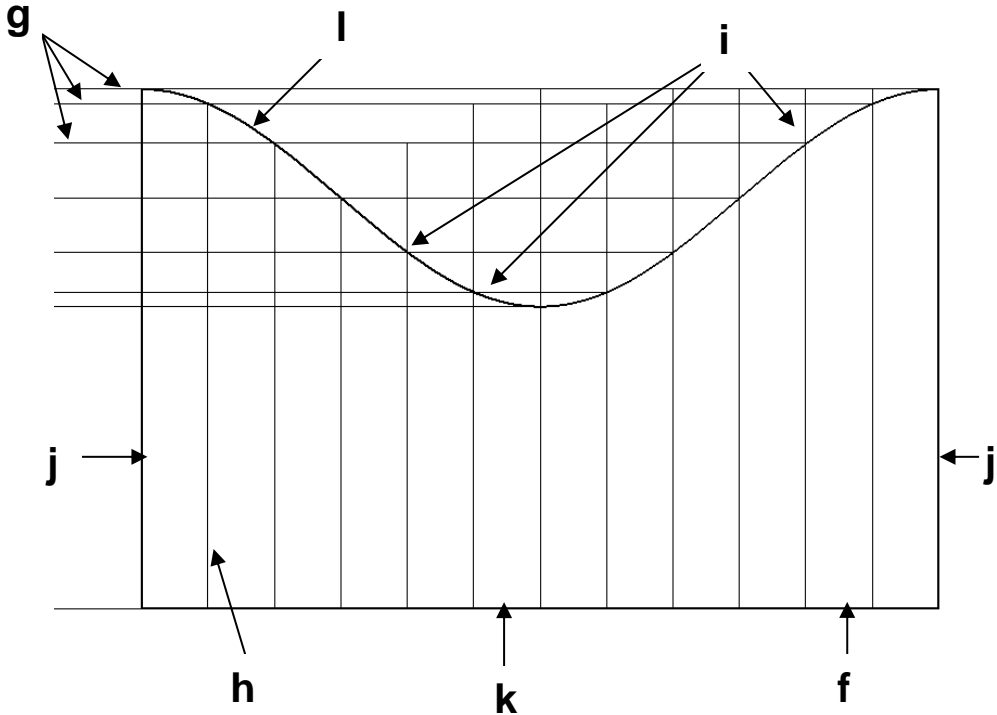


Question 7 (contd)

Development

- (f) Total length (+/- 12) **1**
- (g) Project 7 heights from elevation **1**
- (h) 12 divisions **1**
- (i) Establish 12 points on curve **2**
8 - 11 for 1 , 12 for 2
- (j) Vertical lines outlined, both **1**
- (k) Horizontal line outlined **1**
- (l) Good freehand curve **1**

Total 8

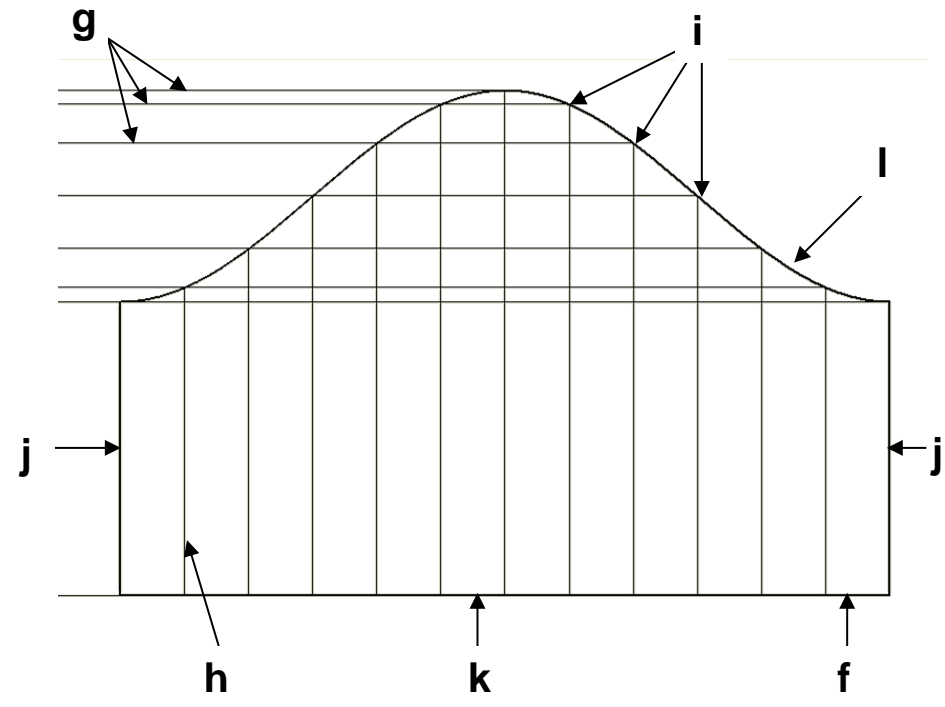


Question 7 (contd)

Development

- (f) Total length (+/- 12) **1**
- (g) Project 7 heights from elevation **1**
- (h) 12 divisions **1**
- (i) Establish 12 points on curve **2**
8 - 11 for 1 , 12 for 2
- (j) Vertical lines outlined, both **1**
- (k) Horizontal line outlined **1**
- (l) Good freehand curve **1**

Total 8

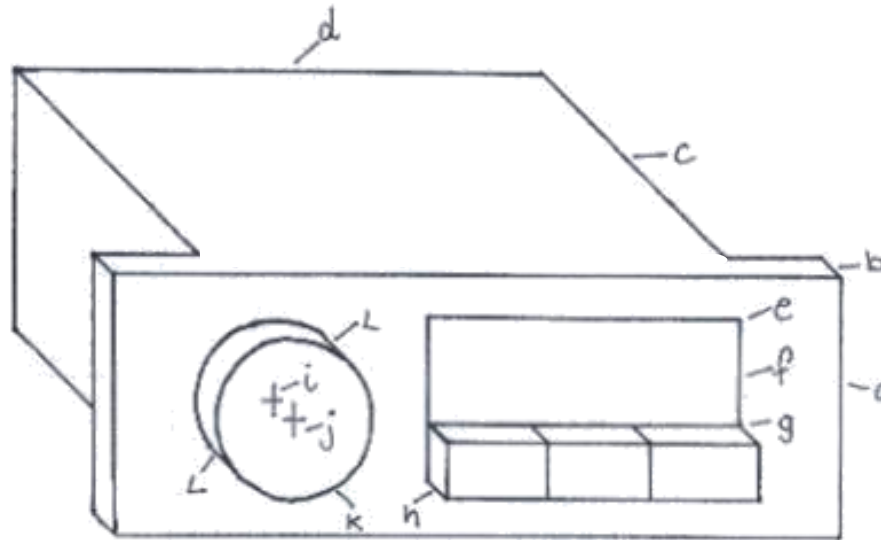


Question 8

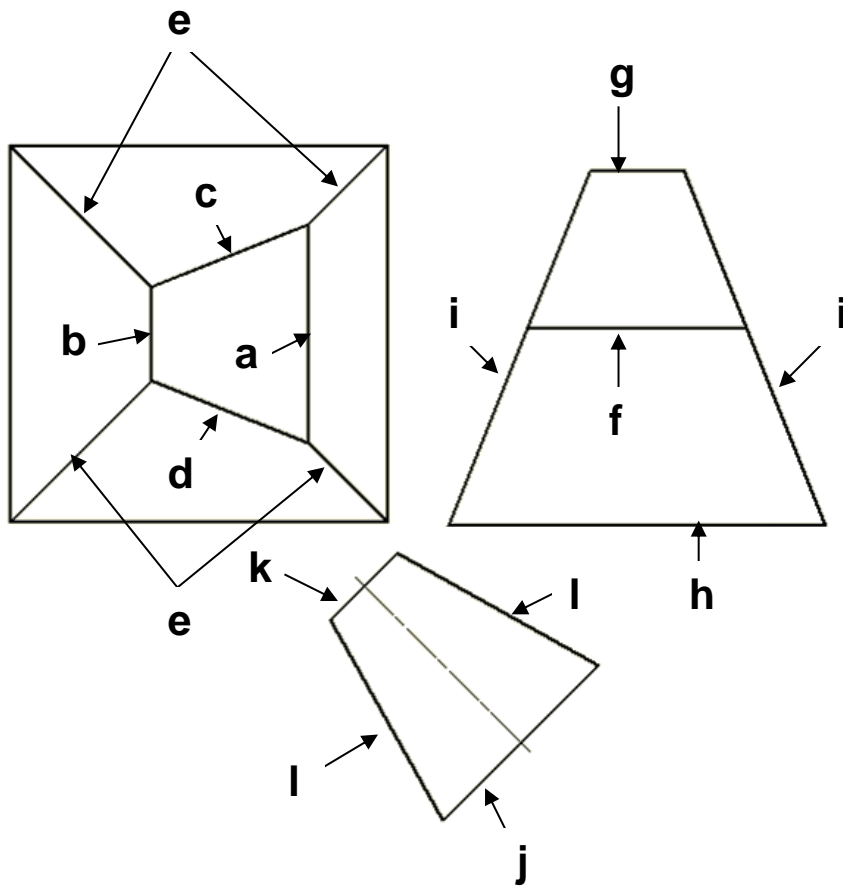
End Elevation

- (a) Height and length of face 1
- (b) Face depth 1
- (c) Body depth 1
- (d) Body length 1
- (e) Screen position, any corner 1
- (f) Screen length and height 1
- (g) Button Position, any corner 1
- (h) Button depth 1
- (i) Rear circle position 1
- (j) Front circle position 1
- (k) Circle diameter 1
- (l) Tangent Lines, both 1

Total 12



If drawn full size candidate will lose marks
At b, c, h and j.



Question 9

Plan

- (a) Vertical line, long 1
- (b) Vertical line, short 1
- (c) Sloping line 1
- (d) Sloping line 1
- (e) Diagonal lines, all four 1

End Elevation

- (f) Horizontal line 1
- (g) Horizontal line 1
- (h) Horizontal line 1
- (i) Sloping lines, both 1

True Shape

- (j) Line 1
- (k) Line 1
- (l) Sloping lines, both 1

Total 12



[END OF MARKING INSTRUCTIONS]