

STAPLE HERE

FOR OFFICIAL USE

--	--	--	--	--	--

X033/11/01

NATIONAL QUALIFICATIONS 2012
 FRIDAY, 18 MAY
 1.00 PM – 3.30 PM
GRAPHIC COMMUNICATION INTERMEDIATE 2

Fill in these boxes and read what is printed below.

Full name of centre Town

Forename(s) Surname

Date of birth
 Day Year Scottish candidate number Number of seat

70 marks are allocated to this paper

- 1 Answer all questions.
- 2 Read each question carefully before you answer.
- 3 Written answers may be in **ink** or **pencil**.
- 4 Drawings and sketches **must be in pencil**.
- 5 Dimensions are given in millimetres or as stated.
- 6 Orthographic drawings are in third angle projection.

At the end of the examination
 check that your name is on every sheet;
 put the sheets in correct numerical order;
 place this sheet on top of the others;
 join all sheets together by **stapling** at the top left-hand corner;
 before leaving the examination room, you must give these sheets to the Invigilator
 (if you do not you may lose all the marks for this paper).

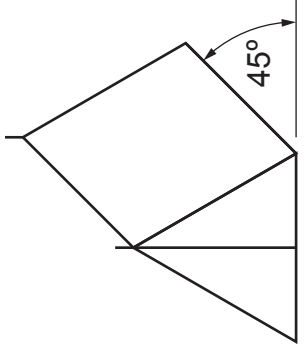
Question	Marks
1	
2	
3	
4	
5	
6	
7	
8	
9	
Total Marks	



[BLANK PAGE]

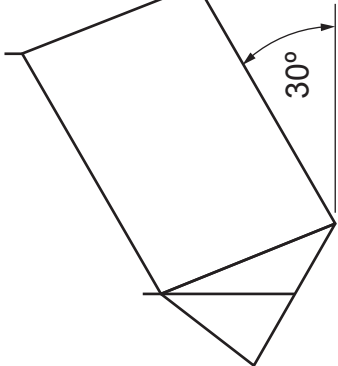
1

Four pictorial views of a tent are shown below. State the **drawing type** used in each of the views.



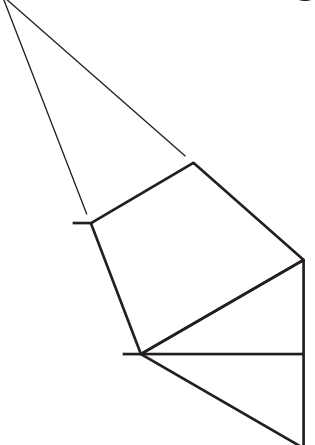
(a)

(1)



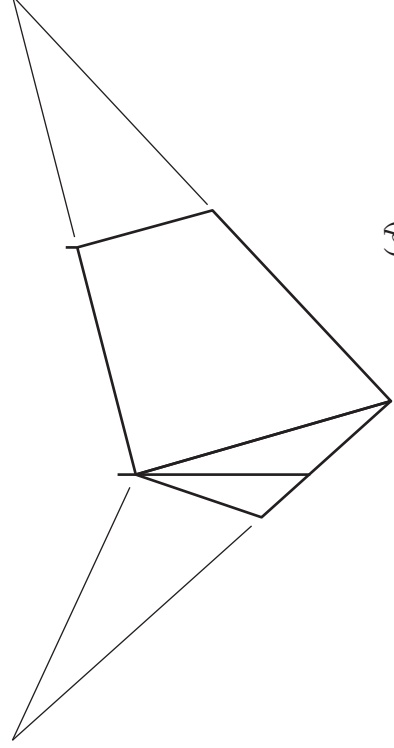
(b)

(1)



(c)

(1)



(d)

(1)

(4 marks)

2

The various stages in producing a CAD drawing of a caravan are shown below. Identify the **single** command used to produce each stage.



(a)

(1)



(b)

(1)



(c)

(1)



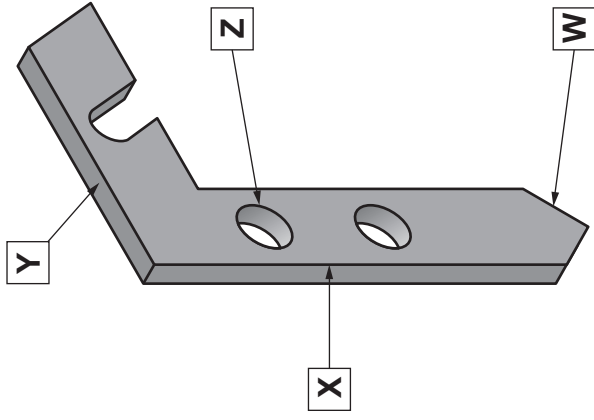
(d)

(1)

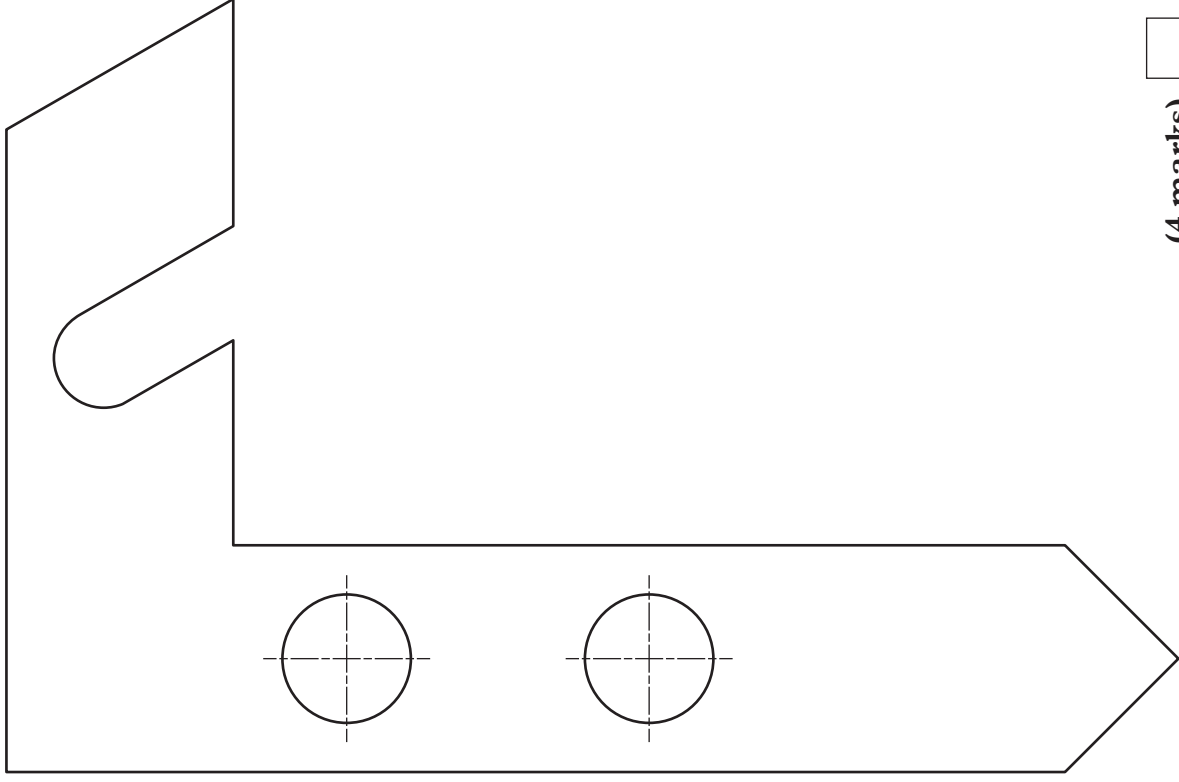
(4 marks)

A pictorial view and elevation of a new tent peg design are given below. Add the following dimensions to the elevation, according to British Standards.

- (a) Angle **W** **45 degrees** **(1)**
- (b) Length of edge **X** **140 mm** **(1)**
- (c) Length of edge **Y** **85 mm** **(1)**
- (d) Diameter **Z** **17 mm** **(1)**



Pictorial view not to scale



(4 marks)

Elevation shown at scale 1 : 1

A desktop published document is shown below. State the DTP features indicated.

Campsite Rules



1. The speed limit on the park is 5mph.
2. Children must not be allowed to play in or around the facilities block or in the park entrance, and must be supervised at all times.
3. Always shut the gates at night and lock them when you are off site.
4. Always leave the padlocks in place locked shut and remember to lock the toilet block when you are off site.
5. Never turn on any of the heaters—they use a lot of electricity and are only intended to stop the pipes from freezing—if you turn them on you will be charged for the electricity used.
6. Always fill the hot water heaters with water before switching them on and never turn off the mains water.
7. Never put tents of any description in the Flag pole area, it should be kept free at all times.
8. Never park a vehicle anywhere except in the car park.
9. Trailers (etc) may be kept with you on your site provided they are not taking up valuable camping space and not a hazard to other camps, additional parking is available on the grass in front of the toilet block but never restrict access to any one else.

10. You may take vehicles (cars, vans etc) onto your site to load and unload providing it has not rained recently.
11. Always put wood, pallets and bricks back in the woodpile area.
12. Take all your rubbish home or burn it, but do not leave tin cans in the embers of any fire.
13. Never light a fire other than in a designated area and please do not dig up the turf from any camping site, we may withhold your deposit if you do.
14. Generators are not to be used on the campsite as they can spoil the quiet of the evening for other campers.
15. Respect quiet hours in the campsite, if you are a large group try and find a more isolated spot away from others. If you will be playing music, keep it at a reasonable level at night or turn it off if people close by are sleeping.
16. If a site area states "no pets" respect this.
17. All pitches must be vacated by 12 noon on the day of departure unless by prior arrangement with reception or the warden.
18. The entrance barrier will be locked between the hours of 11.00 pm and 7.00 am allowing pedestrian access only.

a
b
c

Grand Trees Campsite

- (a) **(1)**
- (b) **(1)**
- (c) **(1)**
- (d) State the page orientation of the document shown above. **(1)**

(4 marks)

A holiday camp has designed a new staff uniform.
An illustration of this is shown opposite.

(a) Red was chosen for the jacket colour. State **one** reason for this.

.....
..... (1)

(b) State a **tertiary** colour which contrasts with the red jacket, which could be used for the campsite logo.

..... (1)

(c) State a **harmonising** colour to the red jacket, that could be used for the shirt.

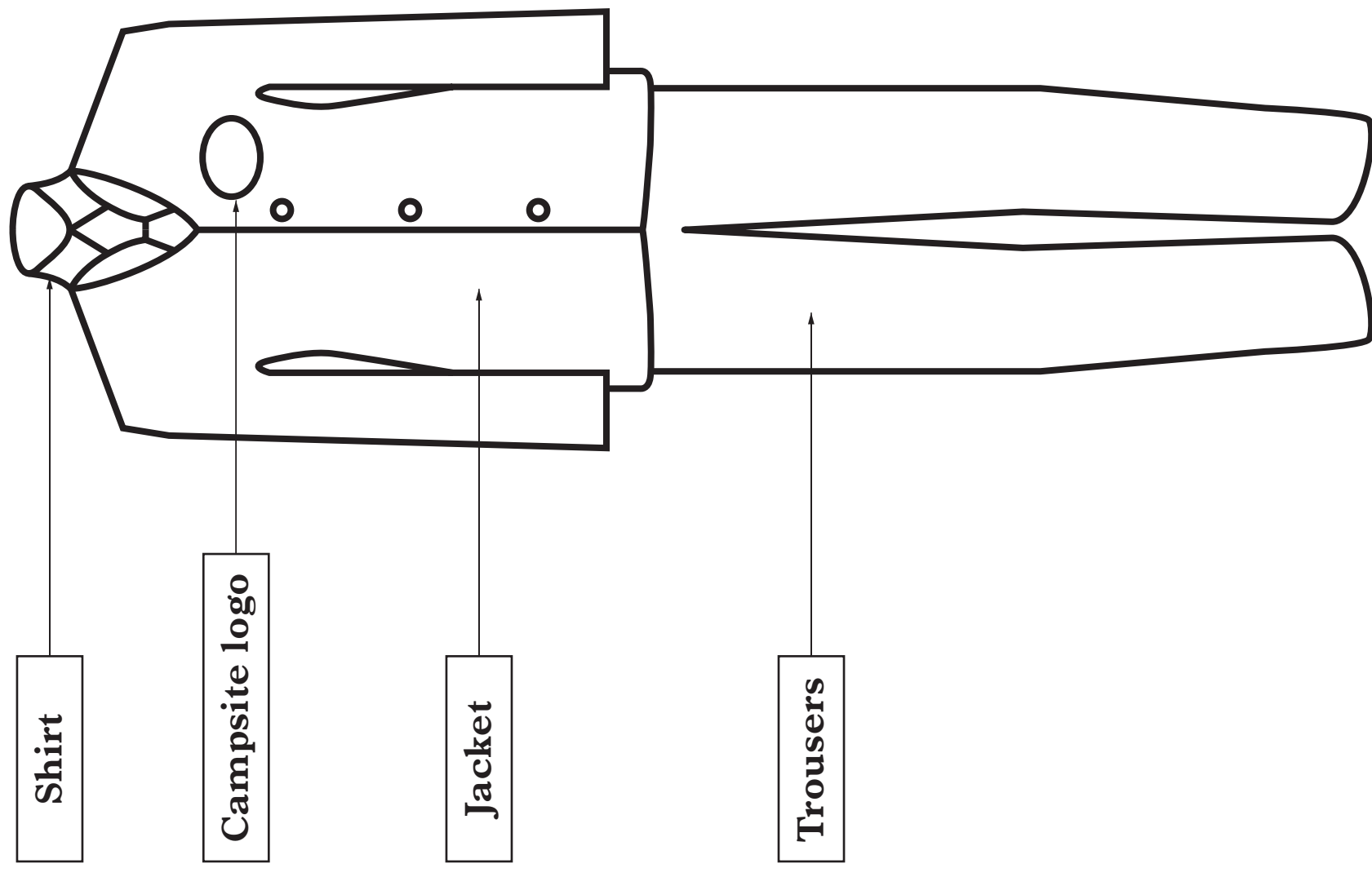
..... (1)

(d) A **shade** of red was chosen for the trouser colour.

State what is added to red to create a shade of red.

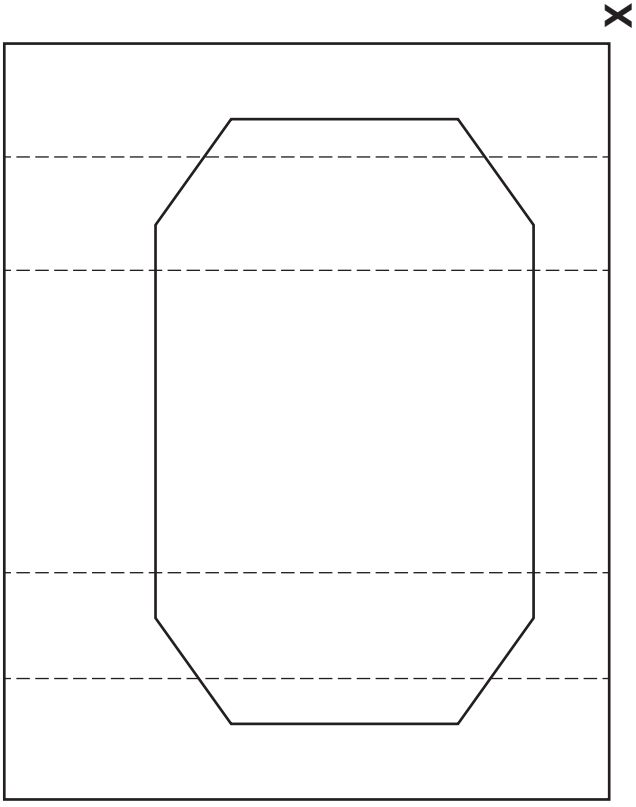
..... (1)

(4 marks)



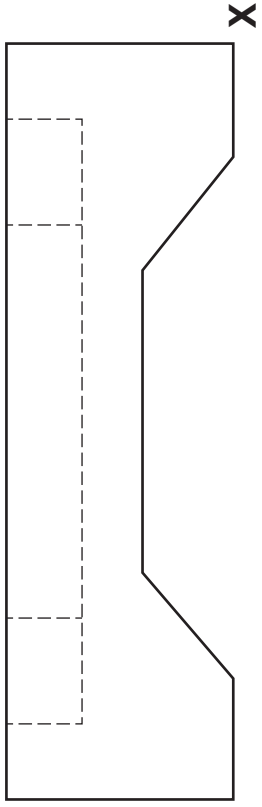
6

The plan and elevation of a walkie-talkie and base unit are given.
 Draw an **assembled** oblique view of the walkie-talkie and base unit, in the position given.
Do not show hidden detail.
All lines at 45° should be half full size. (13 marks)

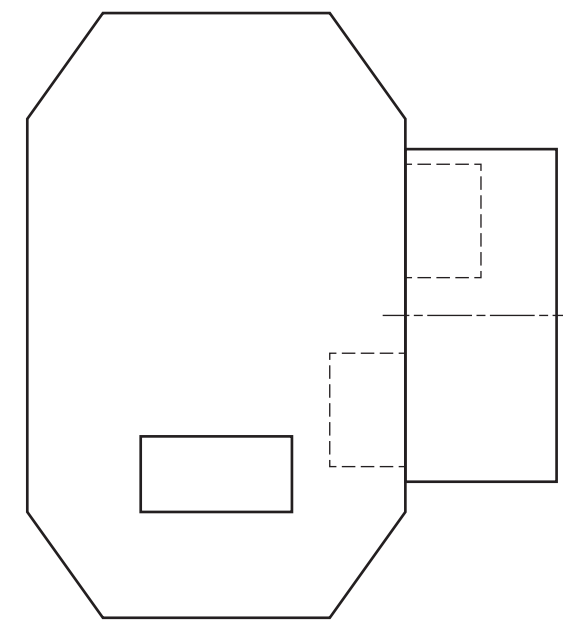


Base Unit

Plan

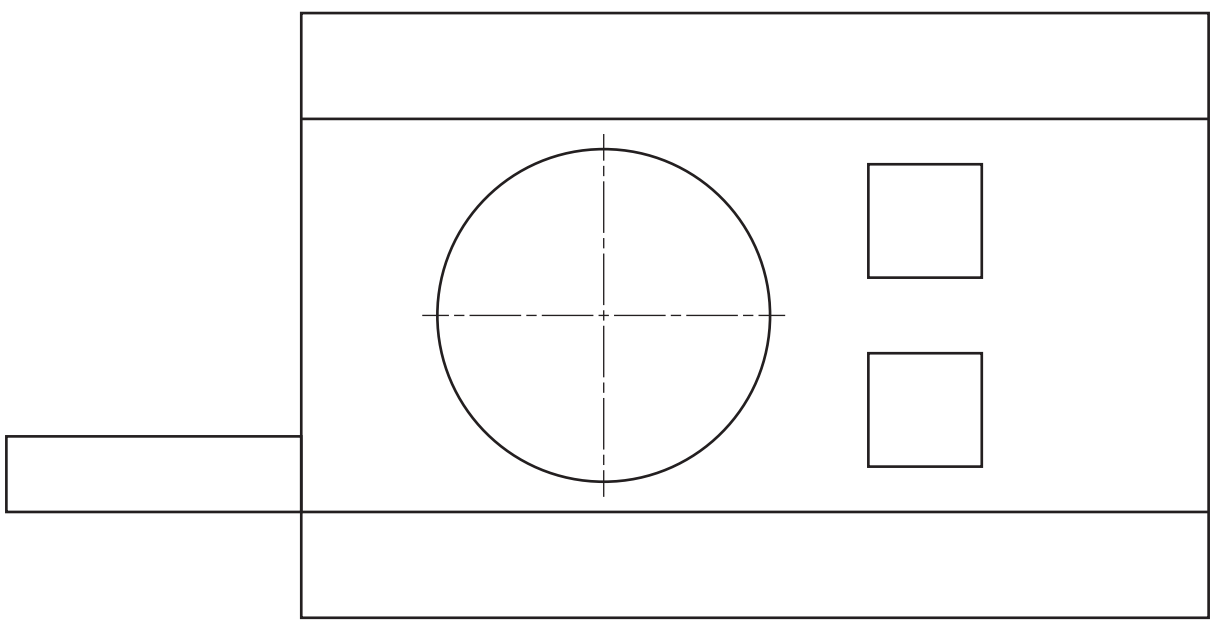


Elevation



Walkie-talkie

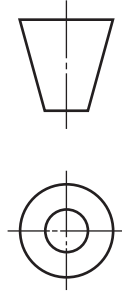
Plan



Elevation



Oblique View



Candidate's Name _____

6

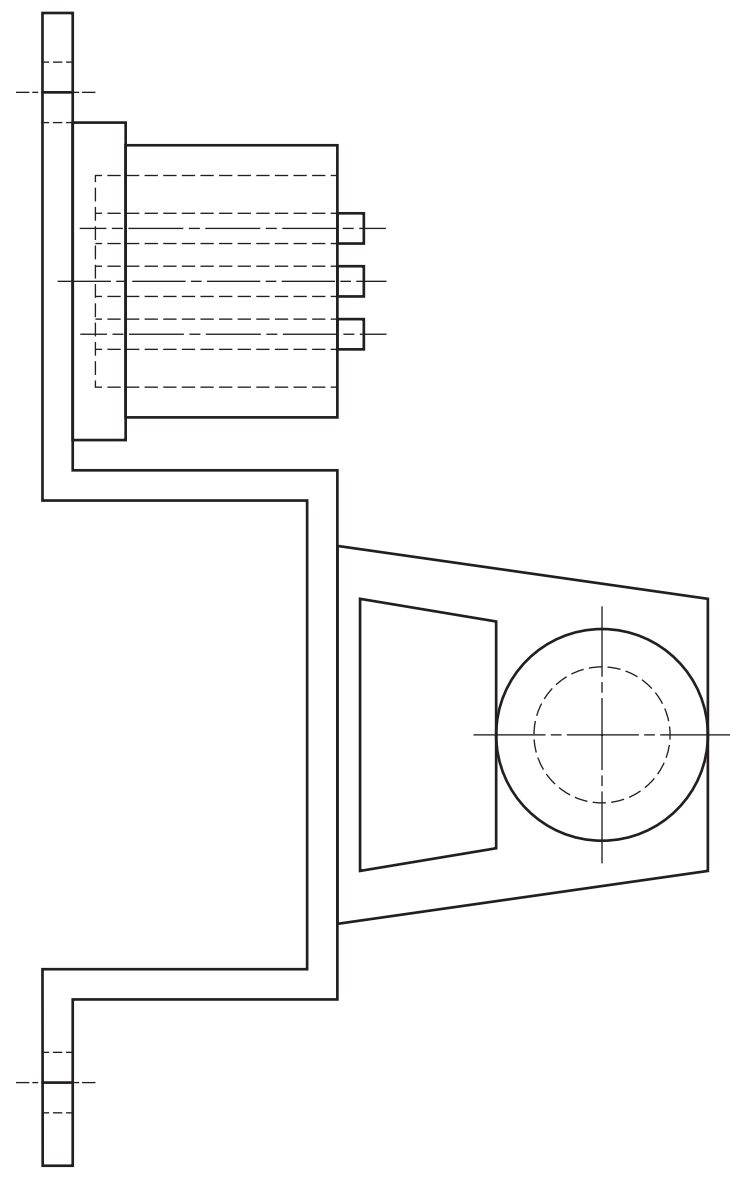
a	
b	
c	
d	
e	
f	
g	
h	
i	
j	
k	
l	
m	
n	

7

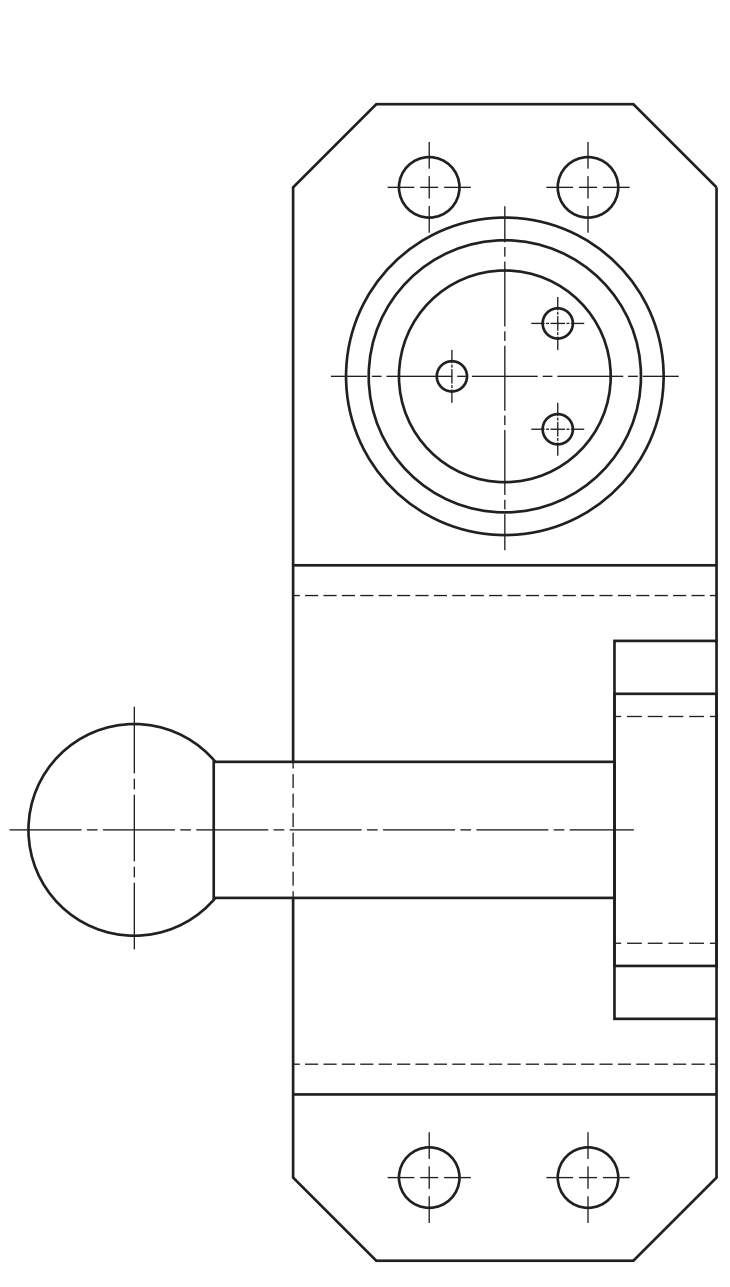
The plan and elevation of a caravan tow bar are given. A pictorial view is shown.

Draw, full size using the given start position, the completed end elevation.

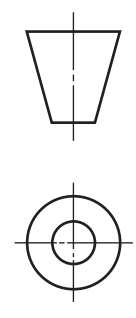
Show all hidden detail. (12 marks)



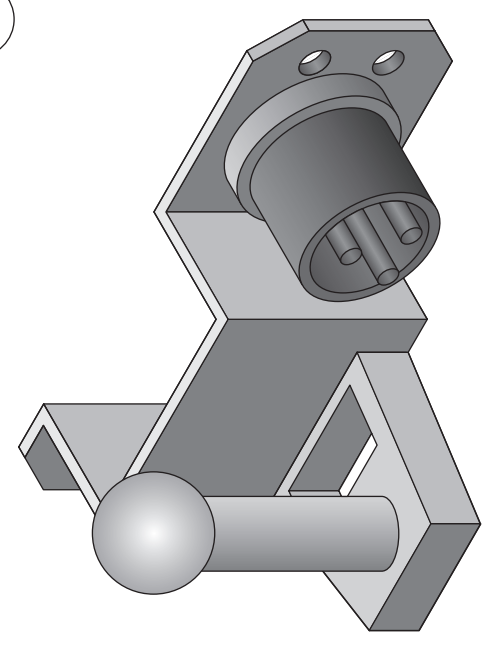
Plan



Elevation



7



PICTORIAL VIEW

a	
b	
c	
d	
e	
f	
g	
h	
i	
j	
k	
l	
m	
n	

End Elevation

Candidate's Name _____

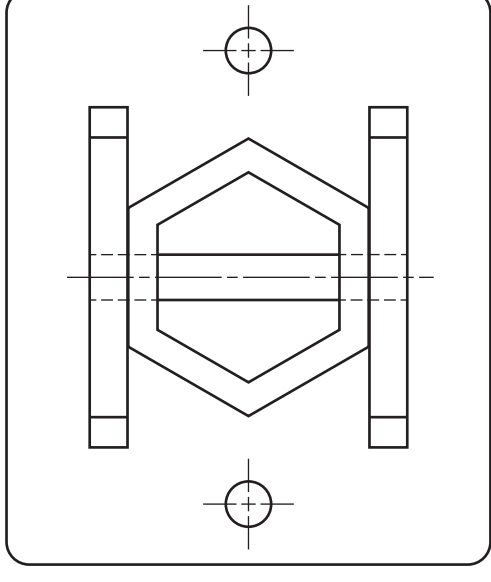
The plan and elevation of a parking pole are given. A pictorial view is also shown.

Draw, full size, using the given starting positions:

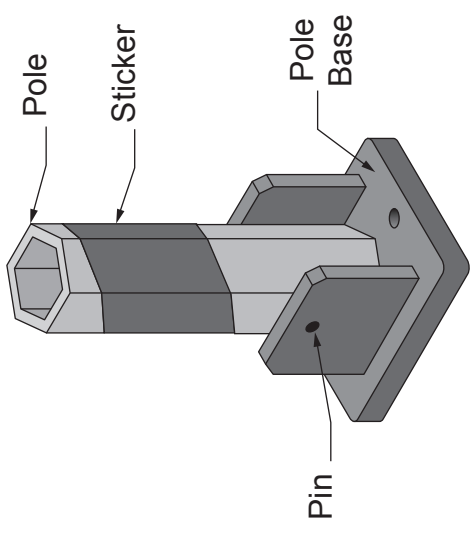
- (a) the end elevation;
- (b) the development of the sticker along the seam **A-A**.

Show all hidden detail.

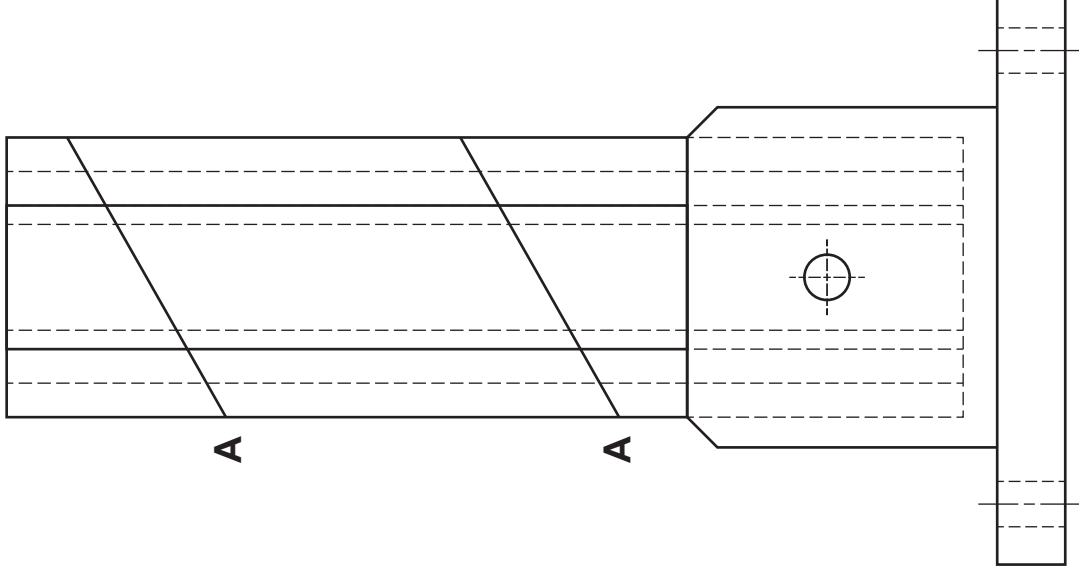
(13 marks)



Plan



PICTORIAL VIEW



Elevation

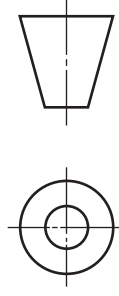
A

A

Development of sticker

a	
b	
c	
d	
e	
f	
g	
h	
i	
j	
k	
l	
m	
n	

End Elevation



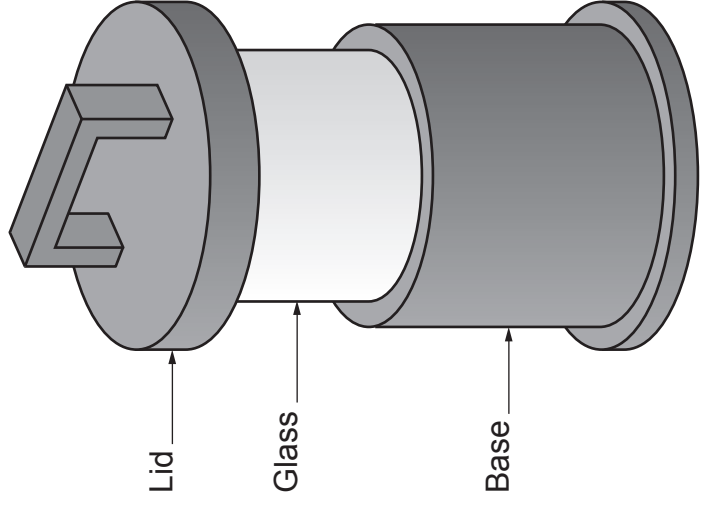
Candidate's Name _____

9

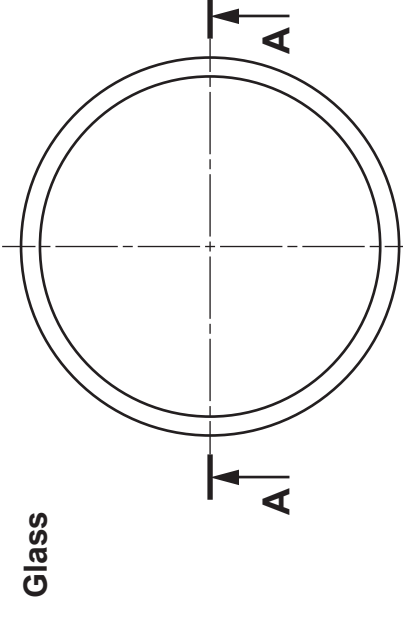
The elevation and plan of the parts that make up the casing of a camping lamp are given. A pictorial view is shown.

Draw, full size, in the position given, the sectional elevation on **A-A** of the assembled camping lamp.

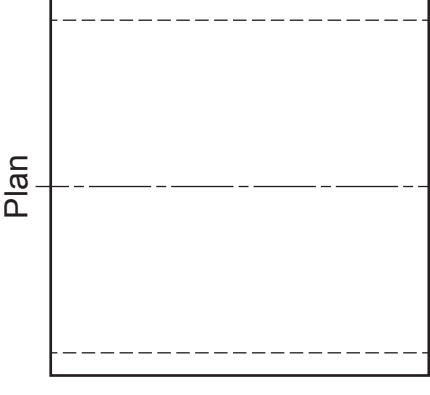
Do not show hidden detail. (12 marks)



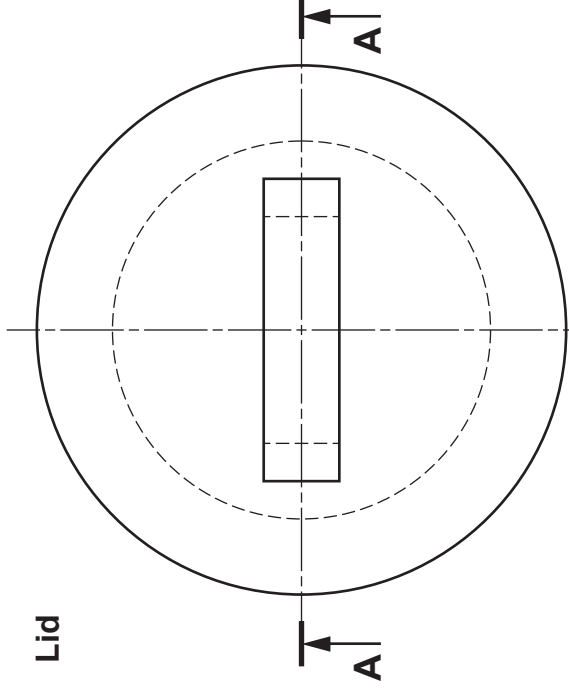
PICTORIAL VIEW



Plan

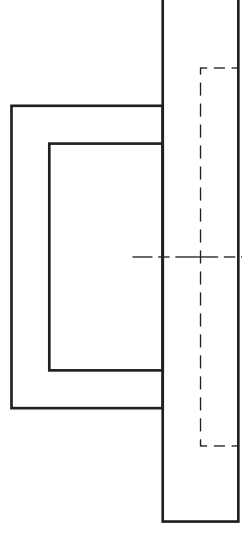


Elevation

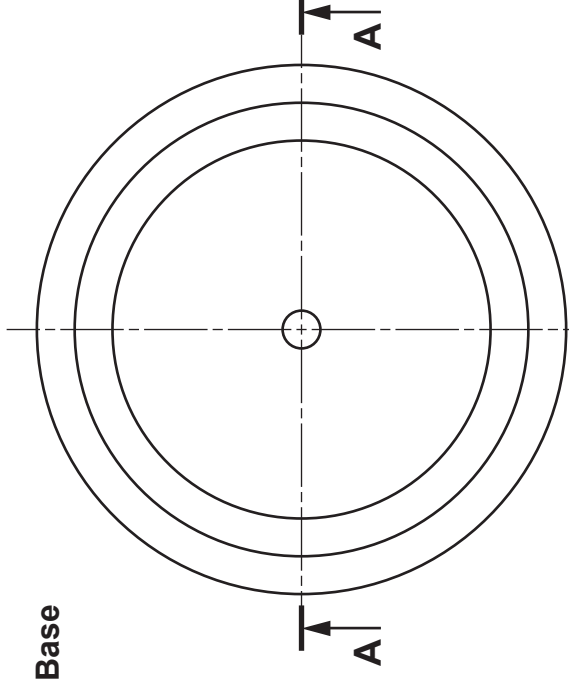


Lid

Plan

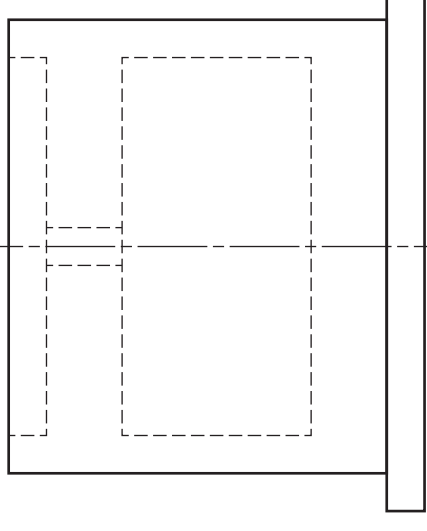


Elevation

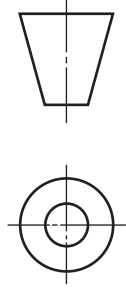


Base

Plan



Elevation



Sectional Elevation on A-A

9

a	
b	
c	
d	
e	
f	
g	
h	
i	
j	
k	
l	
m	
n	

[BLANK PAGE]