

FOR OFFICIAL USE

--	--	--	--	--	--

Total Marks

--

**X116/11/01**

NATIONAL TUESDAY, 7 MAY  
QUALIFICATIONS 1.00 PM – 2.30 PM  
2013

HOME ECONOMICS  
FASHION AND TEXTILE  
TECHNOLOGY  
INTERMEDIATE 2

Fill in these boxes and read what is printed below.

Full name of centre

--

Town

--

Forename(s)

--

Surname

--

Date of birth

Day Month Year

--	--	--	--	--	--

Scottish candidate number

--	--	--	--	--	--	--	--	--	--

Number of seat

--

- 1 Try to answer every question in this paper.
- 2 Read the whole of each question carefully before you answer it.  
Remember that some questions have an element of choice in them.  
The breakdown of Knowledge and Understanding (**KU**), Drawing Conclusions (**DC**) and Evaluation (**EV**) marks are indicated beside each question.
- 3 Write your answers in the spaces provided.
- 4 Additional lines at the end of the booklet can be used if more space is required for answers or if you need to do any rough work.
- 5 Before leaving the examination room you must give this book to the Invigilator. If you do not, you may lose all the marks for this paper.



*Marks*

1. (a) (i) Name **two** natural fibres.

Natural fibre 1 \_\_\_\_\_ 1 KU

Natural fibre 2 \_\_\_\_\_ 1 KU

(ii) Name **two** synthetic fibres.

Synthetic fibre 1 \_\_\_\_\_ 1 KU

Synthetic fibre 2 \_\_\_\_\_ 1 KU

(b) Explain **each** of the following terms.

**Filament fibres**

Explanation \_\_\_\_\_

\_\_\_\_\_

\_\_\_\_\_ 1 KU

**Breathable membranes**

Explanation \_\_\_\_\_

\_\_\_\_\_

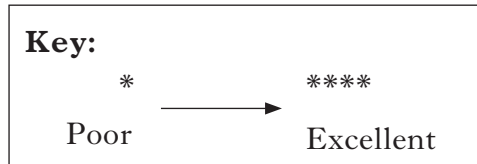
\_\_\_\_\_ 1 KU

1. (continued)

Marks

(c) Evaluate the suitability of **four** of the properties of the fabric shown below for a secondary school pupil's jacket.

Information about school jacket fabric	
Absorbency	****
Durability	**
Stretch	*
Crease resistance	**
Warmth	***
Ease of care	****



Evaluation 1 \_\_\_\_\_

\_\_\_\_\_

1 EV

Evaluation 2 \_\_\_\_\_

\_\_\_\_\_

1 EV

Evaluation 3 \_\_\_\_\_

\_\_\_\_\_

1 EV

Evaluation 4 \_\_\_\_\_

\_\_\_\_\_

1 EV

[Turn over

*Marks*

**1. (continued)**

- (d) Explain how **each** of the following finishes would affect the fabric for the jacket.

**Anti-static**

Explanation \_\_\_\_\_

\_\_\_\_\_

\_\_\_\_\_

**1 KU**

**Flame resistance**

Explanation \_\_\_\_\_

\_\_\_\_\_

\_\_\_\_\_

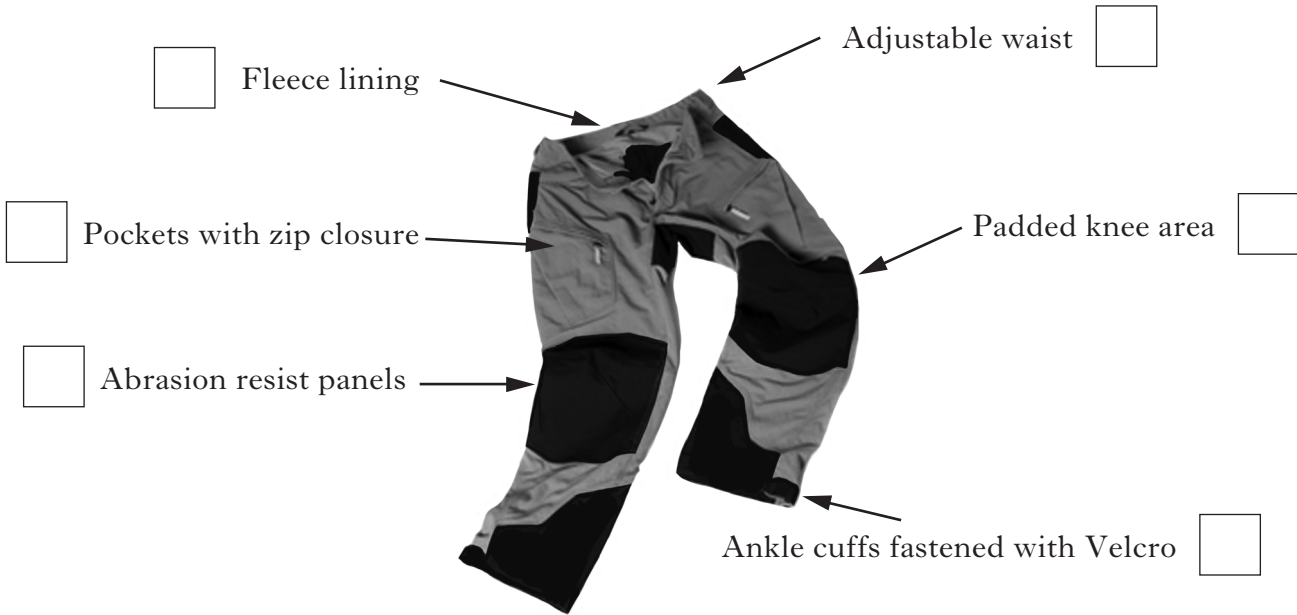
**1 KU**

Marks

2. (a) Study the hill walking trousers shown below.

Explain the importance of **four** of the design features of the trousers.

Place the numbers **1, 2, 3** and **4** in the boxes below to indicate your choice.



Design feature 1 \_\_\_\_\_

\_\_\_\_\_

1 KU

Design feature 2 \_\_\_\_\_

\_\_\_\_\_

1 KU

Design feature 3 \_\_\_\_\_

\_\_\_\_\_

1 KU

Design feature 4 \_\_\_\_\_

\_\_\_\_\_




1 KU

Marks

## 2. (continued)

- (b) A teenager wants to buy a hat to wear when hill walking. The hat will need to be tight fitting and warm to wear.

Study the information about hats shown below and choose the **most suitable** hat.

Information about hats			
	Hat A	Hat B	Hat C
<b>Description</b>	 <ul style="list-style-type: none"> <li>• Beanie style</li> <li>• Reversible</li> </ul>	 <ul style="list-style-type: none"> <li>• Pull-on style</li> <li>• Side flaps with button fastening</li> </ul>	 <ul style="list-style-type: none"> <li>• Trapper style</li> <li>• Side flaps button onto hat when not in use</li> </ul>
<b>Size range</b>	Small Large	Small Large	Small – Medium Medium – Large
<b>Fabric</b>	<ul style="list-style-type: none"> <li>• Stretch knitted</li> <li>• Cotton lining</li> </ul>	<ul style="list-style-type: none"> <li>• Rib knitted</li> <li>• No lining</li> </ul>	<ul style="list-style-type: none"> <li>• Stretch fleece</li> <li>• Fleece lining</li> </ul>
<b>Fibre content</b>	95% cotton 5% lycra	95% acrylic 5% polyester	80% acrylic 20% wool
<b>Colour range</b>	1 colour	3 colours	4 colours

Tick (✓) **one** of the boxes below to indicate your choice.

Hat A

Hat B

Hat C

1 DC

Marks

2. (b) (continued)

Give **three** reasons for your choice.

Reason 1 \_\_\_\_\_

\_\_\_\_\_

\_\_\_\_\_

1 DC

Reason 2 \_\_\_\_\_

\_\_\_\_\_

\_\_\_\_\_

1 DC

Reason 3 \_\_\_\_\_

\_\_\_\_\_

\_\_\_\_\_

1 DC

(c) Explain why a manufacturer would carry out **two** of the following stages in product development.

Place the numbers **1** and **2** in the boxes to indicate your choice.

Concept Generation

Prototype Production

Marketing Plan

Explanation 1 \_\_\_\_\_

\_\_\_\_\_

\_\_\_\_\_

1 KU

Explanation 2 \_\_\_\_\_

\_\_\_\_\_

\_\_\_\_\_

1 KU

[Turn over

*Marks*

**2. (continued)**

(d) The Sale and Supply of Goods Act 1994 protects the consumer when buying textile items.

State **two** points of the Act.

Point 1 \_\_\_\_\_

\_\_\_\_\_

\_\_\_\_\_

**1 KU**

Point 2 \_\_\_\_\_

\_\_\_\_\_

\_\_\_\_\_

**1 KU**



**[Turn over for Question 3 on *Page ten*]**

Marks

3. (a) A youth hostel is refurbishing its TV lounge and plans to buy new floor cushions. The cushions must be available in a range of colours and sizes.

Study the information about floor cushions shown below and choose the **most suitable** floor cushion for the youth hostel.

Information about floor cushions			
	Floor cushion A	Floor cushion B	Floor cushion C
Colour range	***	****	***
Size range	****	****	***
Shape retention	**	***	***
Removable cover	No	Yes	Yes
Cost	£	££	££££

**Key:**

*	→	****	£	→	££££
Poor		Excellent	Inexpensive		Expensive

Tick (✓) **one** of the boxes below to indicate your choice.

Floor cushion A  Floor cushion B  Floor cushion C  **1 DC**

Give **three** reasons for your choice.

Reason 1 \_\_\_\_\_

\_\_\_\_\_

\_\_\_\_\_ **1 DC**

Reason 2 \_\_\_\_\_

\_\_\_\_\_

\_\_\_\_\_ **1 DC**

Reason 3 \_\_\_\_\_

\_\_\_\_\_

\_\_\_\_\_ **1 DC**

Marks

3. (continued)

(b) Name **two** fastenings which would be suitable for a floor cushion.

Fastening 1 \_\_\_\_\_ 1 KU

Fastening 2 \_\_\_\_\_ 1 KU

(c) State **two** advantages and **two** disadvantages of buying the floor cushions online.

Advantage 1 \_\_\_\_\_  
\_\_\_\_\_ 1 KU

Advantage 2 \_\_\_\_\_  
\_\_\_\_\_ 1 KU

Disadvantage 1 \_\_\_\_\_  
\_\_\_\_\_ 1 KU

Disadvantage 2 \_\_\_\_\_  
\_\_\_\_\_ 1 KU

(d) Explain the importance of the following label to the consumer.



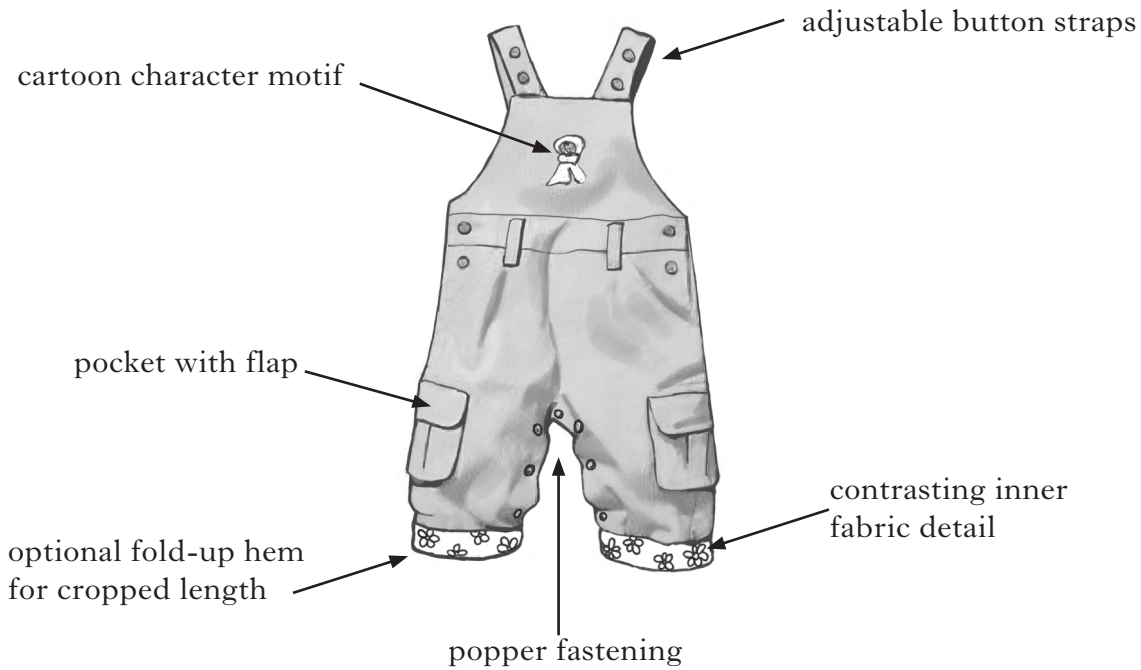
Explanation \_\_\_\_\_  
\_\_\_\_\_  
\_\_\_\_\_ 1 KU

(e) **Apart from fibre content**, give **one** point of information which may be found on a textile label.

Information point \_\_\_\_\_  
\_\_\_\_\_ 1 KU

Marks

4. (a) A manufacturing company is designing dungarees for toddlers.  
Evaluate the suitability of the dungarees shown below.



Evaluation 1 \_\_\_\_\_  
\_\_\_\_\_  
\_\_\_\_\_ **1 EV**

Evaluation 2 \_\_\_\_\_  
\_\_\_\_\_  
\_\_\_\_\_ **1 EV**

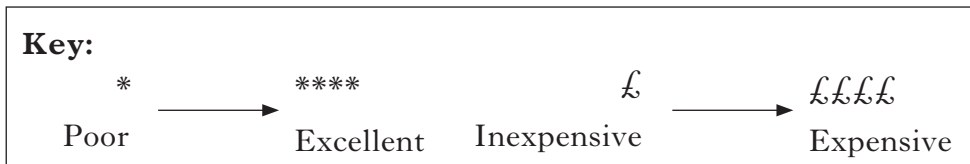
Evaluation 3 \_\_\_\_\_  
\_\_\_\_\_  
\_\_\_\_\_ **1 EV**

Evaluation 4 \_\_\_\_\_  
\_\_\_\_\_  
\_\_\_\_\_ **1 EV**

4. (continued)

(b) The manufacturer plans to make a range of decorated children's clothes.  
Study the information about methods of decoration shown below and  
choose the most suitable decoration for the manufacturer to use.

Information about methods of decoration						
	Ease of Application	Flexibility	Durability	Washability	Colour range	Cost
<b>Method A</b>	**	***	**	***	**	£££
<b>Method B</b>	***	**	*	**	****	££
<b>Method C</b>	****	***	***	***	****	££



Place a tick (✓) in the box to indicate your choice.

Method A           Method B           Method C           **1 DC**

Give **three** reasons for your choice.

Reason 1 \_\_\_\_\_

\_\_\_\_\_

\_\_\_\_\_ **1 DC**

Reason 2 \_\_\_\_\_

\_\_\_\_\_

\_\_\_\_\_ **1 DC**

Reason 3 \_\_\_\_\_

\_\_\_\_\_

\_\_\_\_\_ **1 DC**

Marks

4. (continued)

(c) Choose **two** of the production systems listed below.

State **one** different advantage to the manufacturer of **each** system.

Put the numbers **1** and **2** in the boxes to indicate your choice.

Job production

Batch production

Continuous flow production

Explanation 1 \_\_\_\_\_

\_\_\_\_\_

\_\_\_\_\_

1 KU

Explanation 2 \_\_\_\_\_

\_\_\_\_\_

\_\_\_\_\_

1 KU

(d) State **two** reasons why a designer would attend fashion shows.

Reason 1 \_\_\_\_\_

\_\_\_\_\_

\_\_\_\_\_

1 KU

Reason 2 \_\_\_\_\_

\_\_\_\_\_

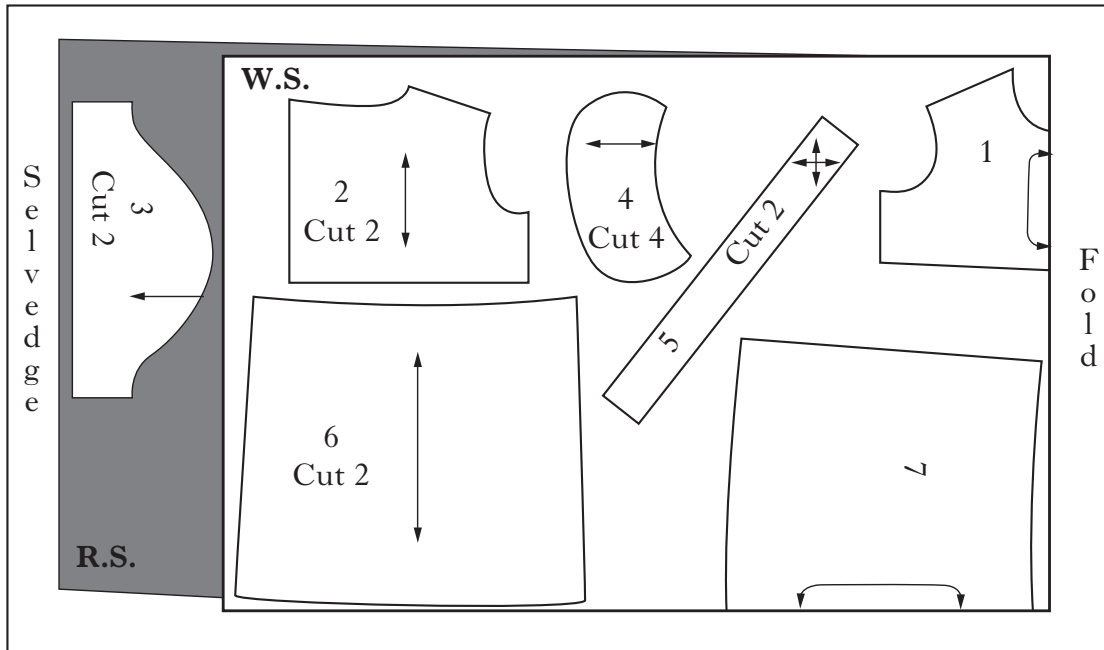
\_\_\_\_\_

1 KU

Marks

5. (a) Study the pattern cutting layout and the front and back views of a baby's dress shown below.  
Identify **three** mistakes in the cutting layout.

**Pattern layout for a baby's dress**



- Piece 1 – front yoke
- Piece 2 – back yoke
- Piece 3 – sleeve
- Piece 4 – collar
- Piece 5 – bias strip
- Piece 6 – back skirt panel
- Piece 7 – front skirt panel



Mistake 1 \_\_\_\_\_

\_\_\_\_\_ **1 KU**

Mistake 2 \_\_\_\_\_

\_\_\_\_\_ **1 KU**

Mistake 3 \_\_\_\_\_

\_\_\_\_\_ **1 KU**

Marks

## 5. (continued)

- (b) **Apart from the picture of the baby's dress**, identify **two** points of information which could be found on the **front** of a paper pattern envelope.

Point 1 \_\_\_\_\_ **1 KU**

Point 2 \_\_\_\_\_ **1 KU**

- (c) A textile student wants to start a business from home, making children's clothing. She wants to purchase an overlocker machine.

The overlocker machine must be:

- lightweight
- easy to use
- compact in size.

Study the information about overlocker machines below and choose the **most suitable** overlocker machine for the textile student to buy.

Information about overlocker machines			
	Overlocker A	Overlocker B	Overlocker C
Threading	<ul style="list-style-type: none"> <li>• 3 or 4 thread</li> <li>• Numbered threading</li> <li>• Easy to thread lower looper</li> </ul>	<ul style="list-style-type: none"> <li>• 2, 3 or 4 thread</li> <li>• Colour coded threading</li> <li>• Self threading lower looper</li> </ul>	<ul style="list-style-type: none"> <li>• 2, 3 or 4 thread</li> <li>• Colour coded threading</li> <li>• Manual threading lower looper</li> </ul>
Weight	8.5 kg	6.5 kg	8.0 kg
Size	36 cm width 34 cm height	31 cm width 32 cm height	35 cm width 35 cm height
Cost	£259	£259	£299
Features	<ul style="list-style-type: none"> <li>• 6 stitch options</li> <li>• 1200 stitches per minute</li> <li>• 2 year guarantee</li> </ul>	<ul style="list-style-type: none"> <li>• 8 stitch options</li> <li>• 1300 stitches per minute</li> <li>• 2 year guarantee</li> </ul>	<ul style="list-style-type: none"> <li>• 8 stitch options</li> <li>• 1100 stitches per minute</li> <li>• 1 year guarantee</li> </ul>

Tick (✓) **one** of the boxes below to indicate your choice.

Overlocker A       Overlocker B       Overlocker C       **1 DC**



Marks

5. (c) (continued)

Give **three** reasons for your choice.

Reason 1 \_\_\_\_\_

\_\_\_\_\_

\_\_\_\_\_ **1 DC**

Reason 2 \_\_\_\_\_

\_\_\_\_\_

\_\_\_\_\_ **1 DC**

Reason 3 \_\_\_\_\_

\_\_\_\_\_

\_\_\_\_\_ **1 DC**

(d) Explain **one** safety factor which should be considered when using an overlocker machine.

Safety factor \_\_\_\_\_

\_\_\_\_\_

\_\_\_\_\_ **1 KU**

(e) **Apart from using the overlocker** to make a seam, name **two** types of seam that would be suitable to use to make a baby's dress.

Seam 1 \_\_\_\_\_

**1 KU**

Seam 2 \_\_\_\_\_

**1 KU**

[END OF QUESTION PAPER]





**[BLANK PAGE]**