

FOR OFFICIAL USE



--	--	--	--	--	--

National
Qualifications
2019

Mark

--

X855/76/01

Photography

THURSDAY, 9 MAY

1:00 PM – 2:00 PM



Fill in these boxes and read what is printed below.

Full name of centre

--

Town

--

Forename(s)

--

Surname

--

Number of seat

--

Date of birth

Day

--	--

Month

--	--

Year

--	--

Scottish candidate number

--	--	--	--	--	--	--	--	--	--

Total marks — 30

SECTION 1 — MULTIPLE CHOICE — 10 marks

Attempt ALL questions.

SECTION 2 — ANALYSIS — 20 marks

Attempt BOTH questions.

Write your answers clearly in the spaces provided in this booklet. Additional space for answers is provided at the end of this booklet. If you use this space you must clearly identify the question number you are attempting.

Use **blue** or **black** ink.

Before leaving the examination room you must give this booklet to the Invigilator; if you do not, you may lose all the marks for this paper.



SECTION 1 — MULTIPLE CHOICE — 10 marks

Attempt ALL questions

Tick (✓) one box in each question

1. A photographer wants to capture an image with visible grain for creative reasons.

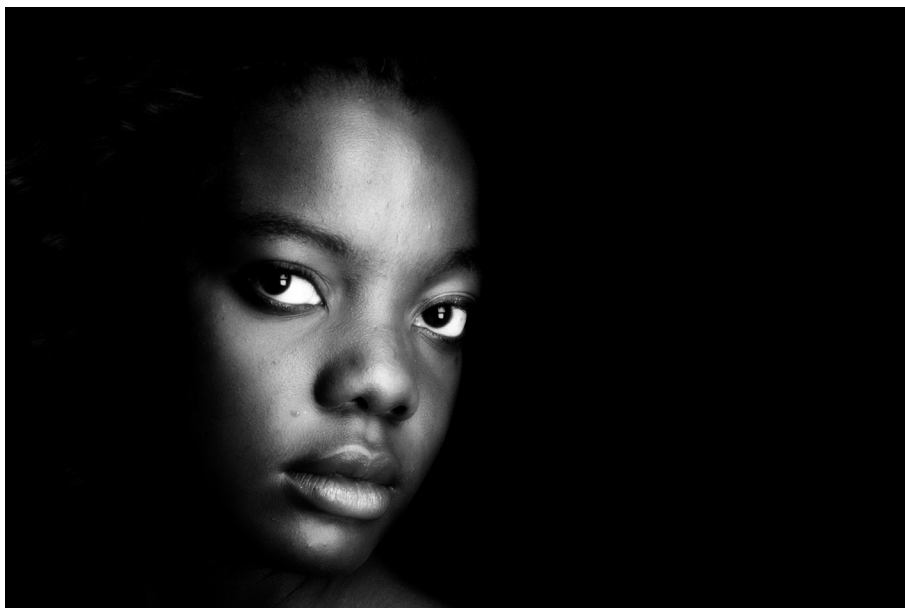
Which camera control would be adjusted to create this effect?

1

- White balance
- EV
- Shutter speed
- ISO

2. Which lighting technique did the photographer use to achieve this image?

1



- Hard lighting
- Low key lighting
- Rim lighting
- Contre-jour lighting



* X 8 5 5 7 6 0 1 0 2 *

3. Which lens did the photographer use to take this image?

1



- Fisheye
- Macro
- Standard
- Wide angle

4. A DSLR camera is set to aperture priority mode.
Which row in the table is correct?

1

	Selected by the photographer	Set automatically by the camera
<input type="checkbox"/>	Shutter speed and aperture	
<input type="checkbox"/>		Shutter speed and aperture
<input type="checkbox"/>	Aperture	Shutter speed
<input type="checkbox"/>	Shutter speed	Aperture

[Turn over



5. A photographer using a DSLR camera in manual mode changes to a faster shutter speed.

If the lighting conditions stay the same, which of the following adjustments would ensure that the exposure is unchanged?

1

- Decrease the EV number
- Close down the aperture
- Increase the ISO number
- Use a neutral density filter

6. The photographer wanted to avoid specular reflections in this image. Which one of the following has the photographer used to achieve this?

1



- Fill in flash
- Diffused light
- Hard light
- Light meter



7. An image taken on a DSLR camera has been affected by motion blur.
Which **one** of the following has contributed to this?

1

- Slow shutter speed
- Incorrect focus
- Wide aperture
- High ISO setting

8. Which technique did the photographer use to achieve the creative effect in this image?

1



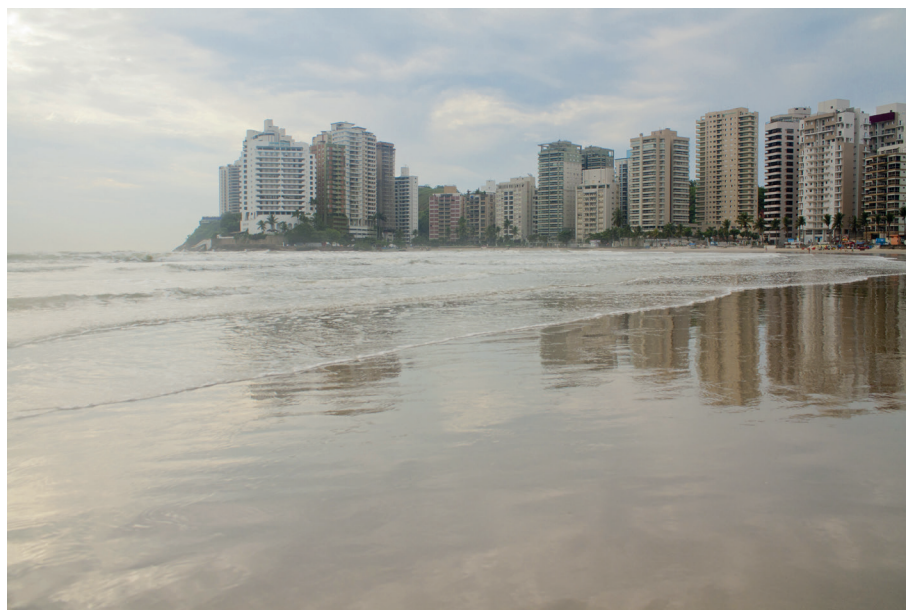
- Tilting
- Panning
- Auto-focusing
- Zooming

[Turn over



* X 8 5 5 7 6 0 1 0 5 *

9. Which histogram represents the tonal range of this image?









10. What would be the result of a photographer increasing the f-number on their camera?

1

- Over-exposed image
- Wider aperture
- Less light entering the lens
- Shallower depth of field



SECTION 2 — ANALYSIS — 20 marks

Attempt BOTH questions

Refer to this image on the supplementary sheet when answering question 11.



Still Life (2016) by Luiz Laercio

11. (a) Identify a white balance setting which could have been used to capture this image.

Explain the effect on the image.

2

White balance setting _____

Effect _____

[Turn over



11. (continued)

- (b) Explain how **three** compositional techniques were used to create visual effect in this image.

Compositional technique 1 _____

Explanation _____

Compositional technique 2 _____

Explanation _____

Compositional technique 3 _____

Explanation _____



* X 8 5 5 7 6 0 1 0 8 *

11. (continued)

- (c) Explain how **three** camera controls were used to capture this image.
Do not include white balance in your answer.

Camera control 1 _____

Explanation _____

Camera control 2 _____

Explanation _____

Camera control 3 _____

Explanation _____





MARKS	DO NOT WRITE IN THIS MARGIN
-------	--------------------------------------

11. (continued)

(d) Explain how lighting techniques and lighting equipment were used to photograph this still life.

2



Refer to this image on the supplementary sheet when answering question 12.



New Brighton from *The Last Resort* series (1985) by Martin Parr

12. Discuss the **technical** and **creative** factors which the photographer would have considered when setting up this shot.

10

[BLANK PAGE]

DO NOT WRITE ON THIS PAGE

Acknowledgement of copyright

Section 1

- Question 2 Kathathep/shutterstock.com
Question 3 Digital Images Studio/shutterstock.com
Question 6 paulista/shutterstock.com
Question 8 shutterupeire/shutterstock.com
Question 9 estudio Maia/shutterstock.com

Section 2

- Question 11 Image, “Still Life” by Luiz Laercio.

SQA has made every effort to trace the owners of copyright materials in this question paper, and seek permissions. We will be happy to incorporate any missing acknowledgements. Please contact question.papers@sqa.org.uk.

- Question 12 Image, “New Brighton” by Martin Parr is taken from ‘The Last Resort’ 1983-85. Reproduced by permission of Magnum Photos Ltd. © Martin Parr/Magnum Photos.



* X 8 5 5 7 6 0 1 1 6 *



National
Qualifications
2019

X855/76/11

**Photography
Supplementary sheet**

THURSDAY, 9 MAY

1:00 PM – 2:00 PM

Supplementary sheet for use with questions 11 and 12.



* X 8 5 5 7 6 1 1 *

Image for use with question 11.



Still Life (2016) by Luiz Laercio

Image for use with question 12.



New Brighton from *The Last Resort* series (1985) by Martin Parr

[BLANK PAGE]

DO NOT WRITE ON THIS PAGE

Acknowledgement of copyright

Question 11 Image, "Still Life" by Luiz Laercio.

SQA has made every effort to trace the owners of copyright materials in this question paper, and seek permissions. We will be happy to incorporate any missing acknowledgements. Please contact question.papers@sqa.org.uk.

Question 12 Image, "New Brighton" by Martin Parr is taken from 'The Last Resort' 1983-85. Reproduced by permission of Magnum Photos Ltd. © Martin Parr/Magnum Photos.