



National
Qualifications
2022

X828/76/11

**Fashion and Textile
Technology**

WEDNESDAY, 11 MAY

1:00 PM – 2:30 PM

Total marks — 45

SECTION 1 — 15 marks

Attempt the question.

SECTION 2 — 30 marks

Attempt ALL questions.

Write your answers clearly in the answer booklet provided. In the answer booklet you must clearly identify the question number you are attempting.

Use **blue** or **black** ink.

Before leaving the examination room you must give your answer booklet to the Invigilator; if you do not, you may lose all the marks for this paper.



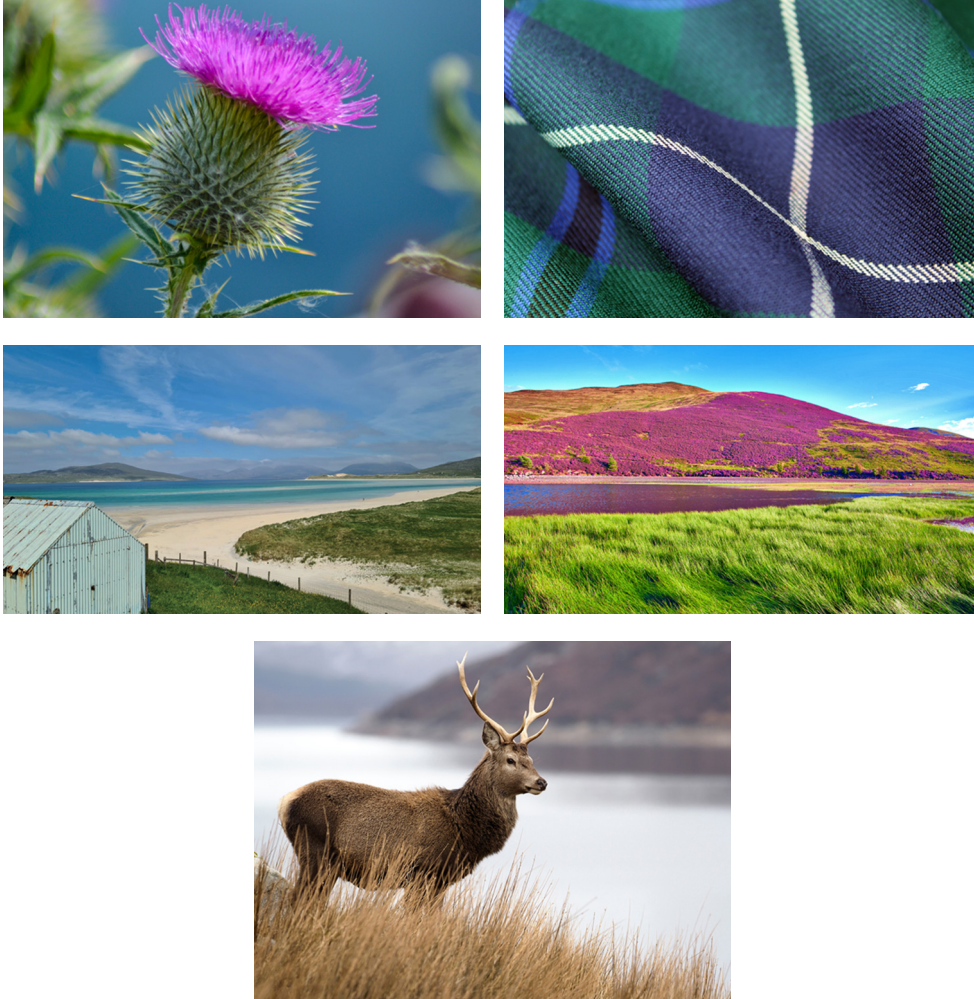
SECTION 1 — 15 marks

MARKS

Attempt the question

Question 1

A fashion designer is creating a range of clothing to be retailed at Scottish tourist attractions using these images for inspiration.



- (a) Identify **three** key features from the images. Discuss how **each** of these can inspire fashion items designed for this collection. 10
- (b) Describe **two** environmental issues that the designer might consider when choosing textiles for the items in the collection. 2
- (c) Evaluate the suitability of using bespoke production when manufacturing items for this collection. 3

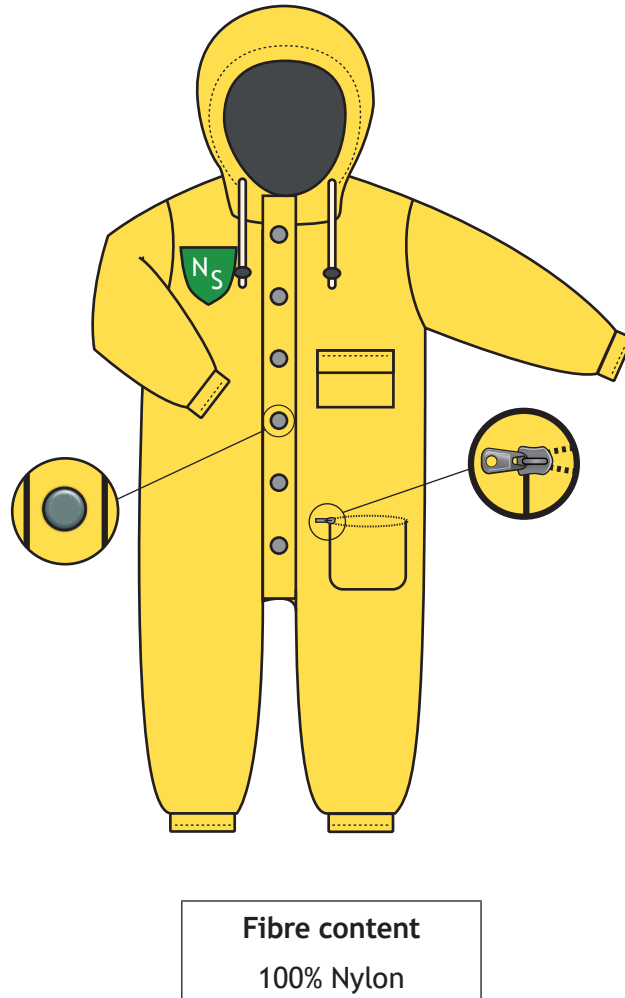
SECTION 2 — 30 marks
Attempt ALL questions

MARKS

Question 2

A nursery school has decided to buy puddle suits for the children to wear when playing outdoors.

The following design is being considered.



Analyse the impact of the properties and characteristics of the textile and the construction techniques used in this design.

Your analysis should include reference to:

- a minimum of **four** properties and characteristics of textile
- a minimum of **four** construction techniques

used in the manufacture of the puddle suit.

10

[Turn over

Question 3

A textile manufacturer is producing a running top using performance fabrics.

- | | |
|--|----------|
| (a) Identify and explain two principles of design that need to be considered. | 4 |
| (b) Describe three benefits of using performance fabrics to make the running top. | 3 |
| (c) The running top will be manufactured using a knitted fabric.
Evaluate the suitability of a knitted fabric for this top. | 3 |

Question 4

A denim jacket is to be included in a new range for teenagers.

This is a prototype of a denim jacket that will be included in the range.



- (a) Identify **two** fabric finishes that could be applied to the denim jacket and evaluate their suitability for a teenager. 4
- (b) Explain why the manufacturer would create a prototype of the denim jacket. 3
- (c) Evaluate the suitability of using a celebrity to endorse the denim jacket. 3

[END OF QUESTION PAPER]

[BLANK PAGE]

DO NOT WRITE ON THIS PAGE

[BLANK PAGE]

DO NOT WRITE ON THIS PAGE

[BLANK PAGE]

DO NOT WRITE ON THIS PAGE

Acknowledgement of copyright

- Question 1 Gwyneth Bell/shutterstock.com, SergeBertasiusPhotography/shutterstock.com,
Erni/shutterstock.com, RossEdwardCairney/shutterstock.com,
Question 4 VecFashion/shutterstock.com