

Moderation Summary Report

Subject: Physics Level: Advanced Higher

This report summarises the context for moderation of the estimates received for this course, ie, historic attainment, the 2020 Starting Point Distributions and 2020 Estimates. It also provides the key outcomes of the moderation process for this course.

Full details of the moderation approach and the Attainment Statistics (August) 2020 can be found on SQA's statistics page (<https://www.sqa.org.uk/statistics>)¹.

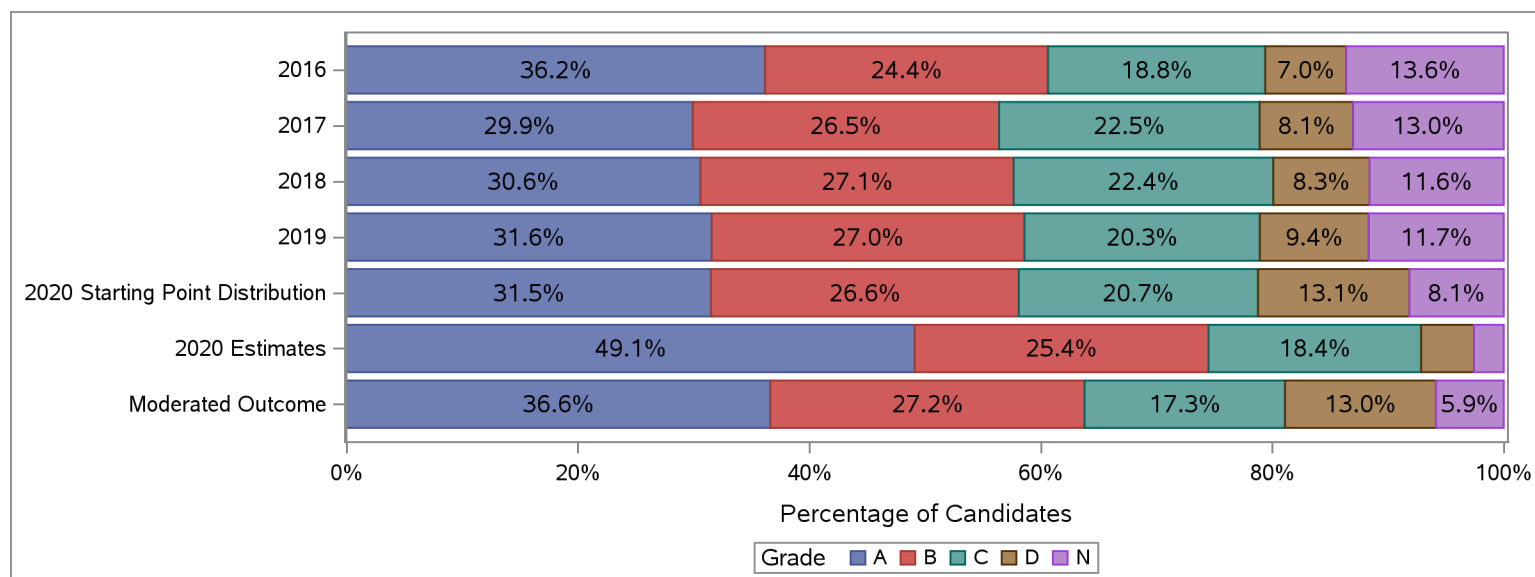
Furthermore, where small numbers of entries (values less than 5) could risk identification of individuals, those numbers and associated percentages have been suppressed in the tables below with an asterisk.

Historic Attainment, Starting Point Distribution, Estimates Received and Moderated Outcome

The table and chart below show:

- (a) historic attainment by grade for this course for years 2016 to 2019;
- (b) the Starting Point Distribution, which provides a projected distribution for 2020 attainment for this course, based on quantitative and qualitative analyses by SQA;
- (c) the distribution of 2020 estimates received from centres for this course (pre moderation); and
- (d) the distribution of grades after the moderation process.

Advanced Higher : Physics	Grade						Total	Grade					
	A	B	C	D	N	A		B	C	D	N	Total	
	Number	Number	Number	Number	Number	Number		%	%	%	%	%	%
2016	688	465	357	133	259	1,902	36.2	24.4	18.8	7.0	13.6	100.0	
2017	545	482	410	147	237	1,821	29.9	26.5	22.5	8.1	13.0	100.0	
2018	570	504	418	155	216	1,863	30.6	27.1	22.4	8.3	11.6	100.0	
2019	509	436	328	152	188	1,613	31.6	27.0	20.3	9.4	11.7	100.0	
2020 Starting Point Distribution	538	455	353	224	139	1,709	31.5	26.6	20.7	13.1	8.1	100.0	
2020 Estimates	839	434	314	78	44	1,709	49.1	25.4	18.4	4.6	2.6	100.0	
Moderated Outcome	626	464	296	223	100	1,709	36.6	27.2	17.3	13.0	5.9	100.0	

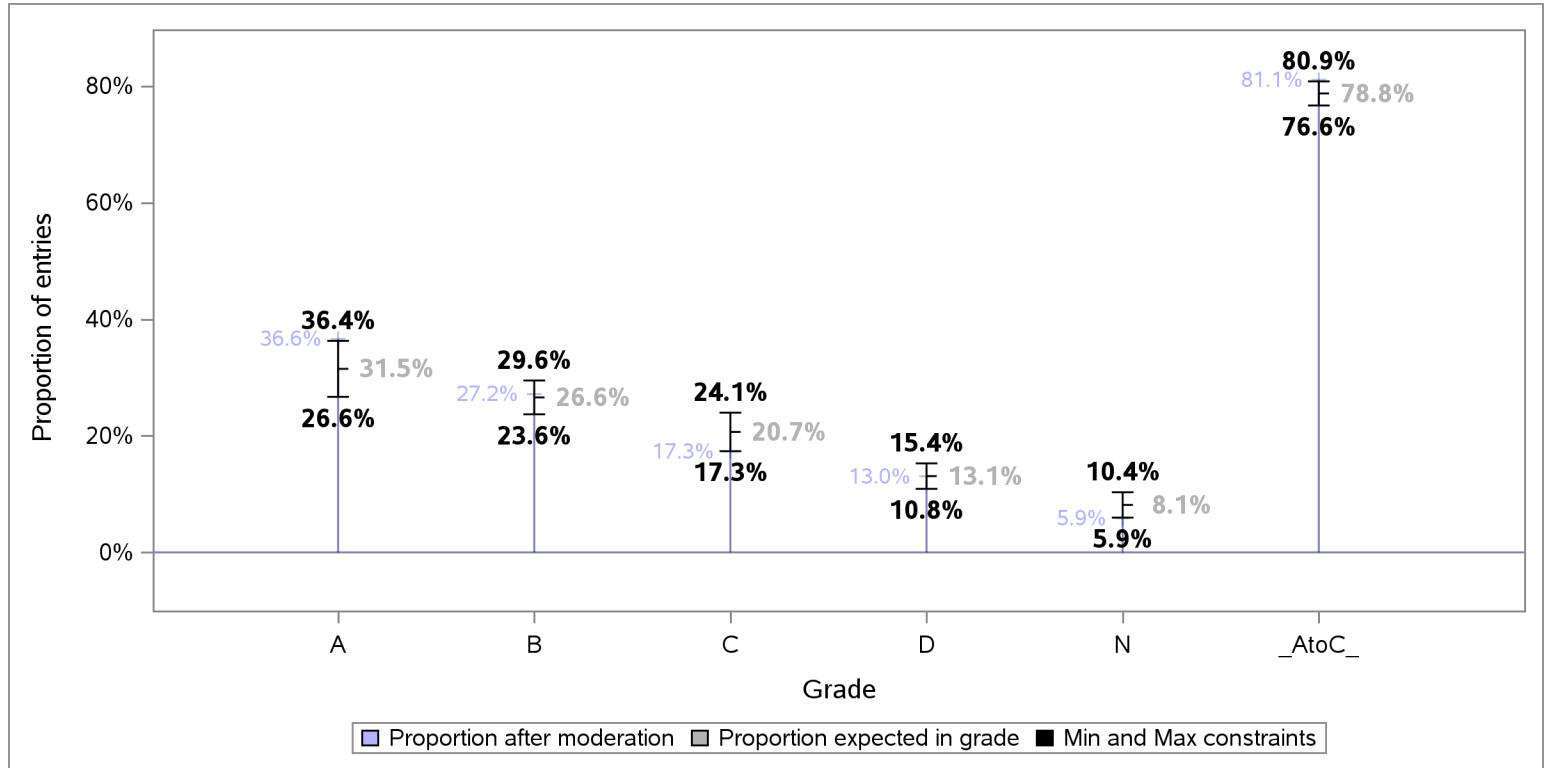


¹Some of the figures in this summary report may differ slightly to figures in the Attainment Statistics (August) 2020 publication. This is because the the Attainment Statistics (August) 2020 publication excludes those candidates who were removed after the moderation process, including candidates who have subsequently been withdrawn by their presenting centre.

Tolerance ranges for the Starting Point Distribution

To allow for year-on-year variability in attainment, tolerance ranges were derived for each projected grade proportion in the Starting Point Distribution, and the A to C rate. For each grade, the tolerance range is derived from the 90% confidence intervals for mean historic attainment from 2016 to 2019.

The chart below shows the projected proportion for each grade, as per the Starting Point Distribution, the tolerance range for each projected proportion and proportion per grade after the moderation process.



Redistribution of estimates by grade as a result of moderation

The table below shows the number and proportion of entries that were estimated for each grade, and how these were redistributed to other grades as a result of the moderation process.

	Total Entries	Moderated Grade									
		A		B		C		D		N	
		Entries	% Entries	Entries	% Entries	Entries	% Entries	Entries	% Entries	Entries	% Entries
Estimated Grade											
ALL	1,709	626	36.6	464	27.2	296	17.3	223	13.0	100	5.9
A	839	601	71.6	213	25.4	24	2.9	*	*	*	*
B	434	25	5.8	239	55.1	119	27.4	51	11.8	*	*
C	314	*	*	12	3.8	148	47.1	134	42.7	20	6.4
D	78	*	*	*	*	*	*	34	43.6	39	50.0
N	44	*	*	*	*	*	*	*	*	41	93.2



Centre Moderation Summary

As detailed in the SQA National Qualifications 2020 Awarding – Methodology Report, the moderation was undertaken at centre level. SQA did not adjust estimates for new centres presenting on this course, as there was no historical evidence on which to base adjustment. The table below provides key summary information about the centre moderation process and outcomes for this course.

Moderation Summary	Number	Percentage of Total
Entries for this course	1,709	100.0%
Centres presenting for this course	240	100.0%
New Centres	6	2.5%
Entries from New Centres	12	0.7%
Highest Entries Presented by a Centre	41	.
Median Entries Presented by Centres	5	.
Lowest Entries Presented by a Centre	1	.
Centres Adjusted	148	61.7%
Centres Not Adjusted	92	38.3%
Entries Adjusted	646	37.8%
Entries Adjusted Down	601	35.2%
Entries Adjusted Up	45	2.6%
Entries Adjusted Down by One Grade	505	29.5%
Entries Adjusted Up by One Grade	45	2.6%
Entries Adjusted Down by Two Grades	95	5.6%
Entries Adjusted Up by Two Grades	*	*
Entries Adjusted Down by Three Grades	*	*
Entries Adjusted Up by Three Grades	*	*
Entries Adjusted Down by Four Grades	*	*
Entries Adjusted Up by Four Grades	*	*
Entries Adjusted from A-C to D	186	10.9%
Entries Adjusted from A-C to N	20	1.2%
Entries Adjusted from D to A-C	*	*
Entries Adjusted from N to A-C	*	*