

## Moderation Summary Report

### Subject: Childcare and Development Level: Higher

This report summarises the context for moderation of the estimates received for this course, ie, historic attainment, the 2020 Starting Point Distributions and 2020 Estimates. It also provides the key outcomes of the moderation process for this course.

Full details of the moderation approach and the Attainment Statistics (August) 2020 can be found on SQA's statistics page (<https://www.sqa.org.uk/statistics>)<sup>1</sup>.

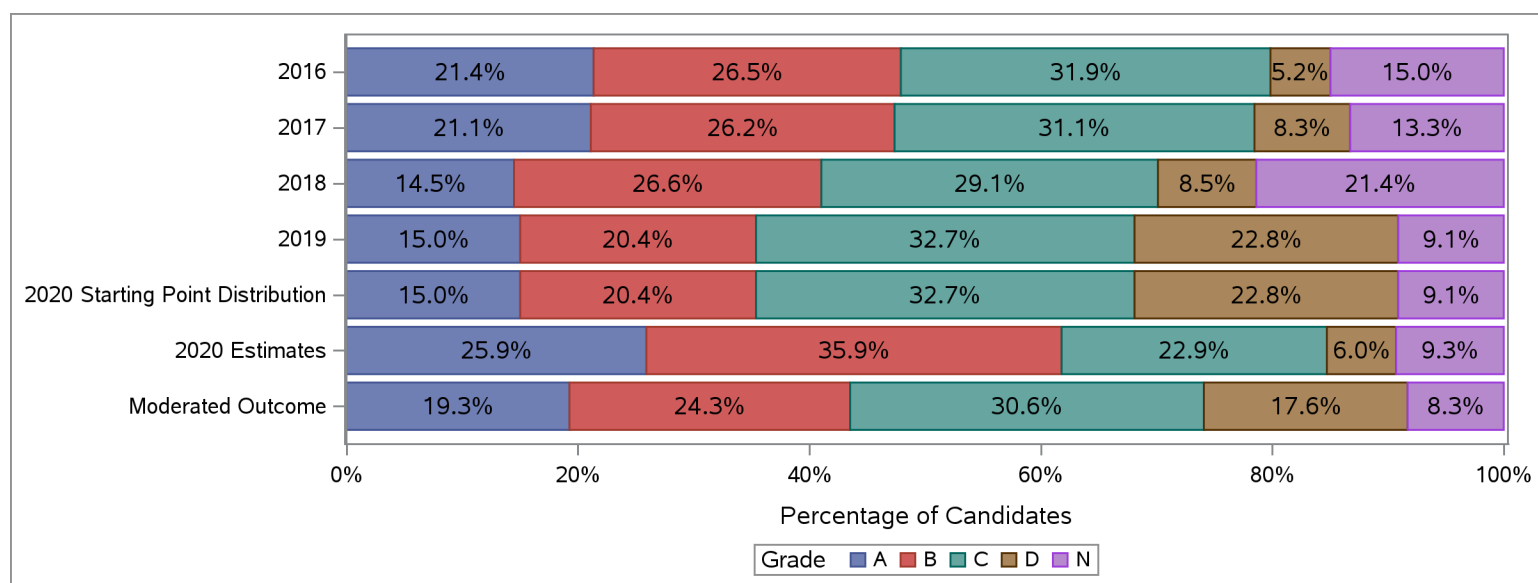
Furthermore, where small numbers of entries (values less than 5) could risk identification of individuals, those numbers and associated percentages have been suppressed in the tables below with an asterisk.

#### Historic Attainment, Starting Point Distribution, Estimates Received and Moderated Outcome

The table and chart below show:

- (a) historic attainment by grade for this course for years 2016 to 2019;
- (b) the Starting Point Distribution, which provides a projected distribution for 2020 attainment for this course, based on quantitative and qualitative analyses by SQA;
- (c) the distribution of 2020 estimates received from centres for this course (pre moderation); and
- (d) the distribution of grades after the moderation process.

Higher : Childcare and Development	Grade						Total	Grade					
	A	B	C	D	N	A		B	C	D	N		
	Number	Number	Number	Number	Number	%		%	%	%	%		
2016	107	133	160	26	75	501	21.4	26.5	31.9	5.2	15.0	100.0	
2017	148	184	218	58	93	701	21.1	26.2	31.1	8.3	13.3	100.0	
2018	109	200	219	64	161	753	14.5	26.6	29.1	8.5	21.4	100.0	
2019	56	76	122	85	34	373	15.0	20.4	32.7	22.8	9.1	100.0	
2020 Starting Point Distribution	45	61	98	69	27	301	15.0	20.4	32.7	22.8	9.1	100.0	
2020 Estimates	78	108	69	18	28	301	25.9	35.9	22.9	6.0	9.3	100.0	
Moderated Outcome	58	73	92	53	25	301	19.3	24.3	30.6	17.6	8.3	100.0	



<sup>1</sup>Some of the figures in this summary report may differ slightly to figures in the Attainment Statistics (August) 2020 publication.

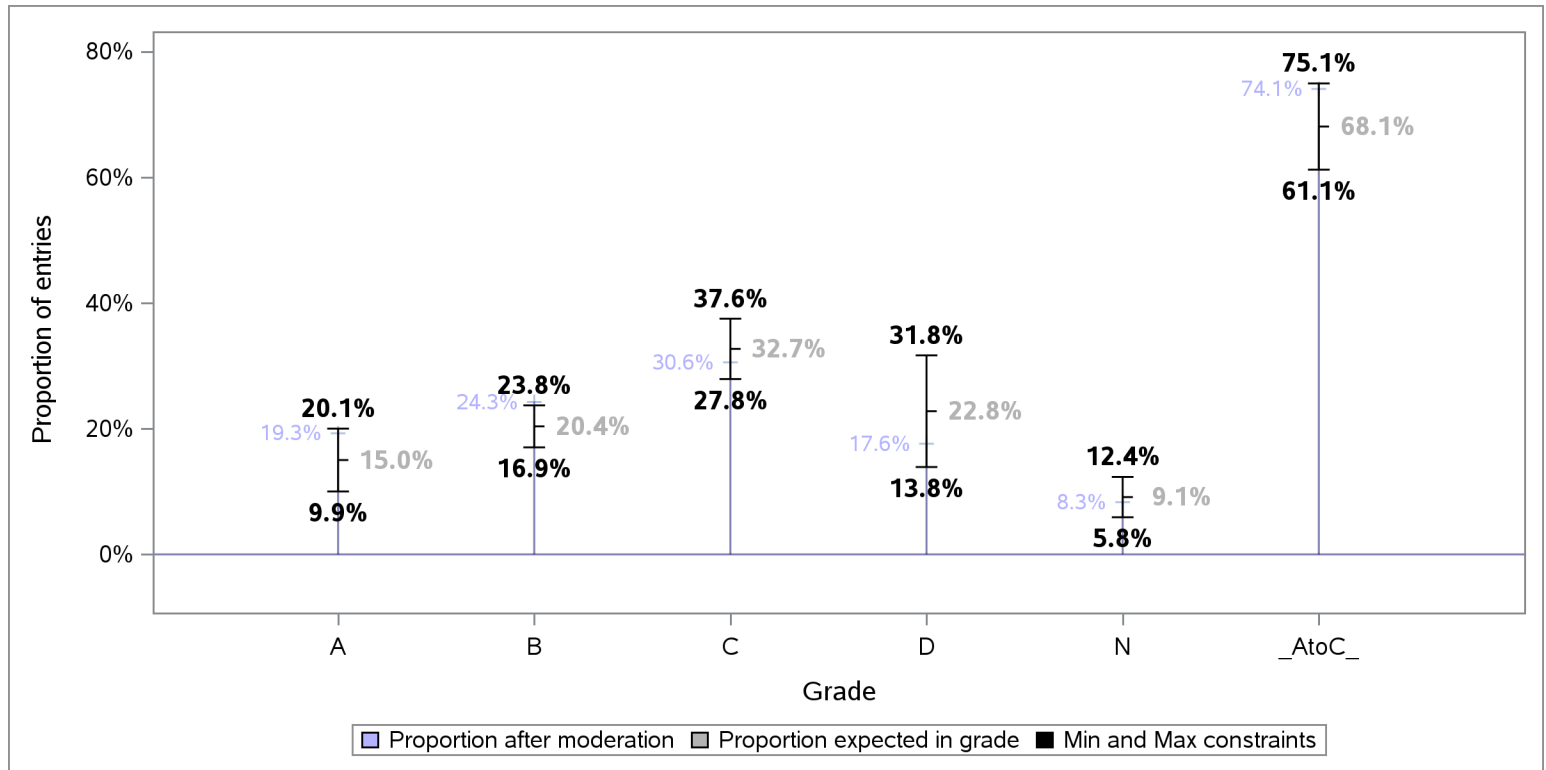
This is because the the Attainment Statistics (August) 2020 publication excludes those candidates who were removed after the moderation process, including candidates who have subsequently been withdrawn by their presenting centre.



### Tolerance ranges for the Starting Point Distribution

To allow for year-on-year variability in attainment, tolerance ranges were derived for each projected grade proportion in the Starting Point Distribution, and the A to C rate. For each grade, the tolerance range is derived from the 90% confidence intervals for mean historic attainment from 2016 to 2019.

The chart below shows the projected proportion for each grade, as per the Starting Point Distribution, the tolerance range for each projected proportion and proportion per grade after the moderation process.



### Redistribution of estimates by grade as a result of moderation

The table below shows the number and proportion of entries that were estimated for each grade, and how these were redistributed to other grades as a result of the moderation process.

Estimated Grade	Total Entries	Moderated Grade									
		A		B		C		D		N	
		Entries	% Entries	Entries	% Entries	Entries	% Entries	Entries	% Entries	Entries	% Entries
ALL	301	58	19.3	73	24.3	92	30.6	53	17.6	25	8.3
A	78	47	60.3	22	28.2	9	11.5	*	*	*	*
B	108	11	10.2	50	46.3	40	37.0	7	6.5	*	*
C	69	*	*	*	*	43	62.3	25	36.2	*	*
D	18	*	*	*	*	*	*	16	88.9	*	*
N	28	*	*	*	*	*	*	*	*	23	82.1

### Centre Moderation Summary

As detailed in the SQA National Qualifications 2020 Awarding – Methodology Report, the moderation was undertaken at centre level. SQA did not adjust estimates for new centres presenting on this course, as there was no historical evidence on which to base adjustment. The table below provides key summary information about the centre moderation process and outcomes for this course.

<b>Moderation Summary</b>	<b>Number</b>	<b>Percentage of Total</b>
Entries for this course	301	100.0%
Centres presenting for this course	17	100.0%
New Centres	3	17.6%
Entries from New Centres	26	8.6%
Highest Entries Presented by a Centre	64	.
Median Entries Presented by Centres	12	.
Lowest Entries Presented by a Centre	1	.
Centres Adjusted	12	70.6%
Centres Not Adjusted	5	29.4%
Entries Adjusted	122	40.5%
Entries Adjusted Down	105	34.9%
Entries Adjusted Up	17	5.6%
Entries Adjusted Down by One Grade	89	29.6%
Entries Adjusted Up by One Grade	17	5.6%
Entries Adjusted Down by Two Grades	16	5.3%
Entries Adjusted Up by Two Grades	*	*
Entries Adjusted Down by Three Grades	*	*
Entries Adjusted Up by Three Grades	*	*
Entries Adjusted Down by Four Grades	*	*
Entries Adjusted Up by Four Grades	*	*
Entries Adjusted from A-C to D	32	10.6%
Entries Adjusted from A-C to N	*	*
Entries Adjusted from D to A-C	*	*
Entries Adjusted from N to A-C	*	*