

## Moderation Summary Report Subject: Photography Level: Higher

This report summarises the context for moderation of the estimates received for this course, ie, historic attainment, the 2020 Starting Point Distributions and 2020 Estimates. It also provides the key outcomes of the moderation process for this course.

Full details of the moderation approach and the Attainment Statistics (August) 2020 can be found on SQA's statistics page (<https://www.sqa.org.uk/statistics>)<sup>1</sup>.

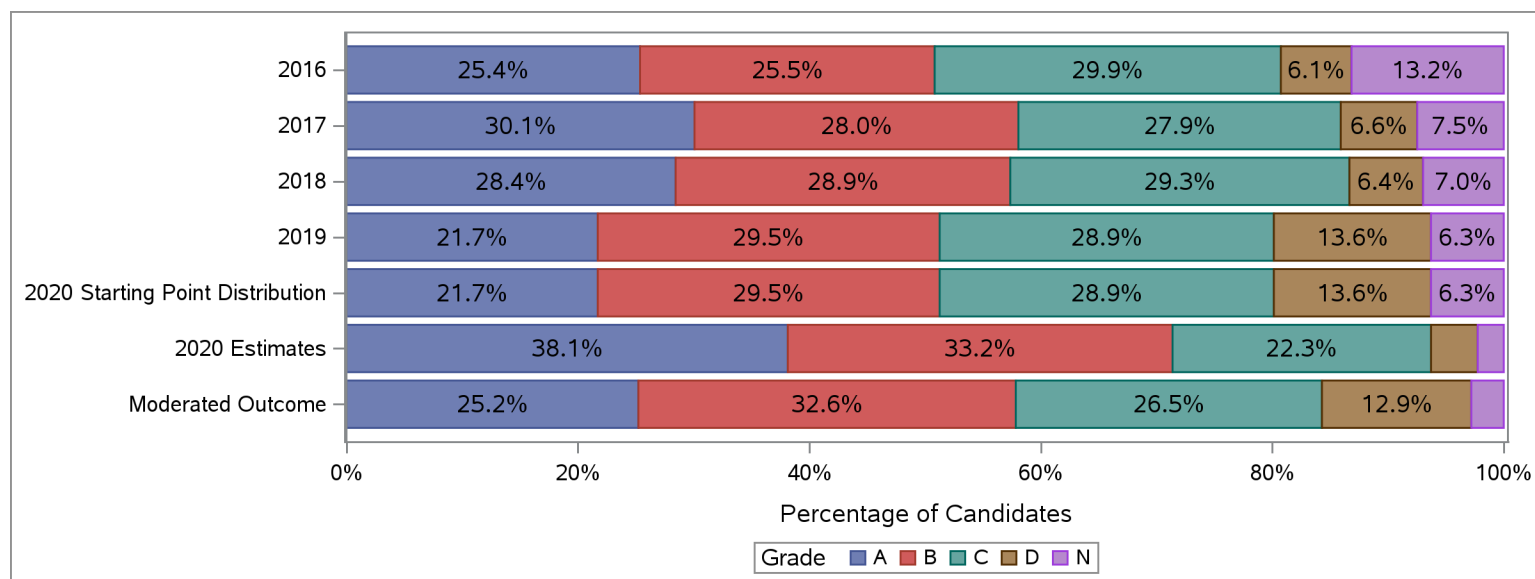
Furthermore, where small numbers of entries (values less than 5) could risk identification of individuals, those numbers and associated percentages have been suppressed in the tables below with an asterisk.

### Historic Attainment, Starting Point Distribution, Estimates Received and Moderated Outcome

The table and chart below show:

- (a) historic attainment by grade for this course for years 2016 to 2019;
- (b) the Starting Point Distribution, which provides a projected distribution for 2020 attainment for this course, based on quantitative and qualitative analyses by SQA;
- (c) the distribution of 2020 estimates received from centres for this course (pre moderation); and
- (d) the distribution of grades after the moderation process.

Higher : Photography	Grade						Total	Grade					
	A	B	C	D	N	A		B	C	D	N		
	Number	Number	Number	Number	Number	%		%	%	%	%		
<b>2016</b>	569	571	671	137	295	2,243	25.4	25.5	29.9	6.1	13.2	100.0	
<b>2017</b>	664	618	615	146	165	2,208	30.1	28.0	27.9	6.6	7.5	100.0	
<b>2018</b>	657	668	677	147	161	2,310	28.4	28.9	29.3	6.4	7.0	100.0	
<b>2019</b>	518	705	689	324	150	2,386	21.7	29.5	28.9	13.6	6.3	100.0	
<b>2020 Starting Point Distribution</b>	511	696	680	320	148	2,355	21.7	29.5	28.9	13.6	6.3	100.0	
<b>2020 Estimates</b>	898	783	526	95	53	2,355	38.1	33.2	22.3	4.0	2.3	100.0	
<b>Moderated Outcome</b>	594	768	623	304	66	2,355	25.2	32.6	26.5	12.9	2.8	100.0	



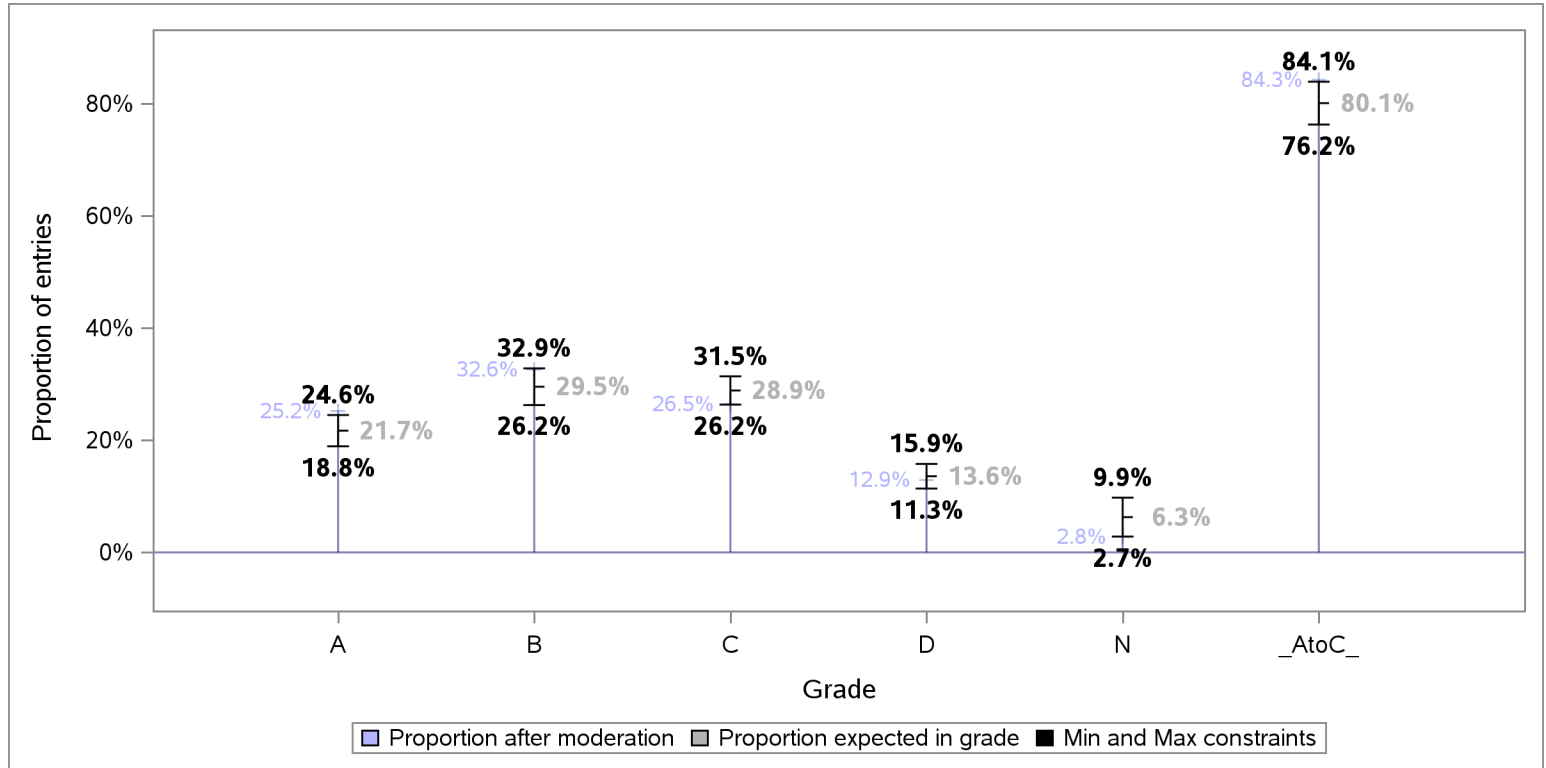
<sup>1</sup>Some of the figures in this summary report may differ slightly to figures in the Attainment Statistics (August) 2020 publication. This is because the the Attainment Statistics (August) 2020 publication excludes those candidates who were removed after the moderation process, including candidates who have subsequently been withdrawn by their presenting centre.



### Tolerance ranges for the Starting Point Distribution

To allow for year-on-year variability in attainment, tolerance ranges were derived for each projected grade proportion in the Starting Point Distribution, and the A to C rate. For each grade, the tolerance range is derived from the 90% confidence intervals for mean historic attainment from 2016 to 2019.

The chart below shows the projected proportion for each grade, as per the Starting Point Distribution, the tolerance range for each projected proportion and proportion per grade after the moderation process.



### Redistribution of estimates by grade as a result of moderation

The table below shows the number and proportion of entries that were estimated for each grade, and how these were redistributed to other grades as a result of the moderation process.

Estimated Grade	Total Entries	Moderated Grade									
		A		B		C		D		N	
		Entries	% Entries	Entries	% Entries	Entries	% Entries	Entries	% Entries	Entries	% Entries
ALL	2,355	594	25.2	768	32.6	623	26.5	304	12.9	66	2.8
A	898	577	64.3	317	35.3	*	*	*	*	*	*
B	783	17	2.2	443	56.6	320	40.9	*	*	*	*
C	526	*	*	8	1.5	297	56.5	221	42.0	*	*
D	95	*	*	*	*	*	*	80	84.2	13	13.7
N	53	*	*	*	*	*	*	*	*	53	100.0



### Centre Moderation Summary

As detailed in the SQA National Qualifications 2020 Awarding – Methodology Report, the moderation was undertaken at centre level. SQA did not adjust estimates for new centres presenting on this course, as there was no historical evidence on which to base adjustment. The table below provides key summary information about the centre moderation process and outcomes for this course.

Moderation Summary	Number	Percentage of Total
Entries for this course	2,355	100.0%
Centres presenting for this course	200	100.0%
New Centres	23	11.5%
Entries from New Centres	163	6.9%
Highest Entries Presented by a Centre	36	.
Median Entries Presented by Centres	11	.
Lowest Entries Presented by a Centre	1	.
Centres Adjusted	150	75.0%
Centres Not Adjusted	50	25.0%
Entries Adjusted	905	38.4%
Entries Adjusted Down	878	37.3%
Entries Adjusted Up	27	1.1%
Entries Adjusted Down by One Grade	871	37.0%
Entries Adjusted Up by One Grade	27	1.1%
Entries Adjusted Down by Two Grades	7	0.3%
Entries Adjusted Up by Two Grades	*	*
Entries Adjusted Down by Three Grades	*	*
Entries Adjusted Up by Three Grades	*	*
Entries Adjusted Down by Four Grades	*	*
Entries Adjusted Up by Four Grades	*	*
Entries Adjusted from A-C to D	224	9.5%
Entries Adjusted from A-C to N	*	*
Entries Adjusted from D to A-C	*	*
Entries Adjusted from N to A-C	*	*