

## Moderation Summary Report Subject: Politics Level: Higher

This report summarises the context for moderation of the estimates received for this course, ie, historic attainment, the 2020 Starting Point Distributions and 2020 Estimates. It also provides the key outcomes of the moderation process for this course.

Full details of the moderation approach and the Attainment Statistics (August) 2020 can be found on SQA's statistics page (<https://www.sqa.org.uk/statistics>)<sup>1</sup>.

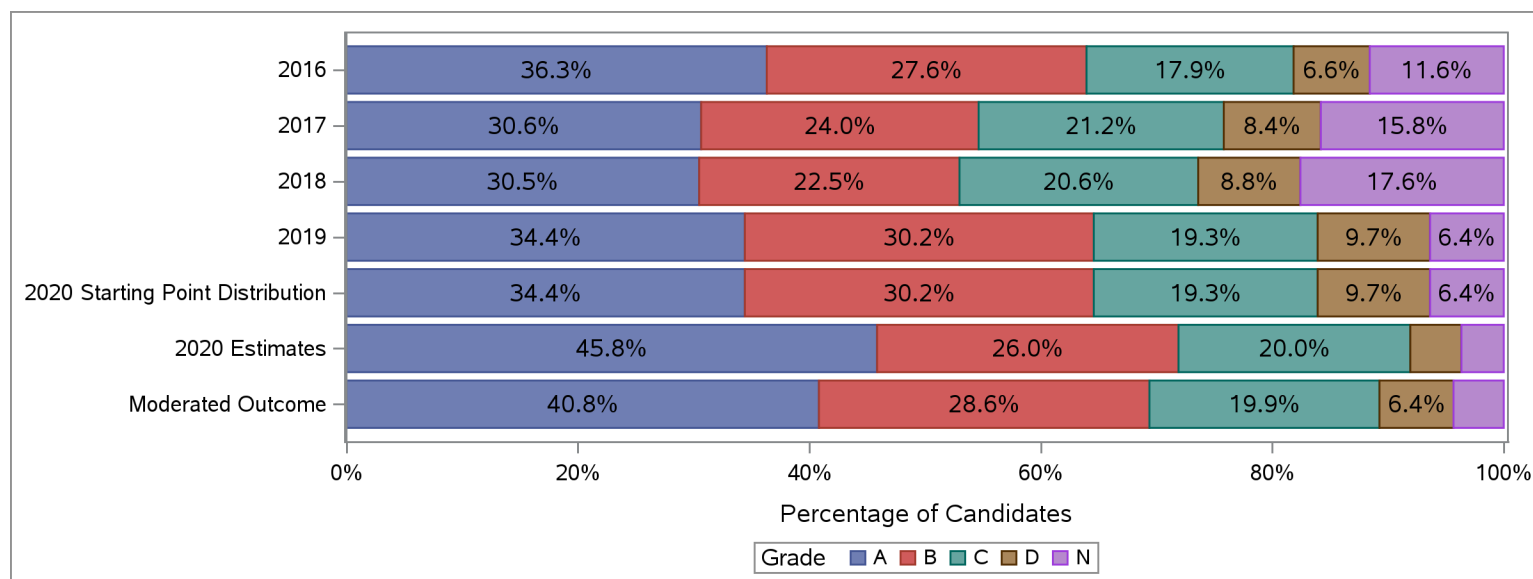
Furthermore, where small numbers of entries (values less than 5) could risk identification of individuals, those numbers and associated percentages have been suppressed in the tables below with an asterisk.

### Historic Attainment, Starting Point Distribution, Estimates Received and Moderated Outcome

The table and chart below show:

- (a) historic attainment by grade for this course for years 2016 to 2019;
- (b) the Starting Point Distribution, which provides a projected distribution for 2020 attainment for this course, based on quantitative and qualitative analyses by SQA;
- (c) the distribution of 2020 estimates received from centres for this course (pre moderation); and
- (d) the distribution of grades after the moderation process.

Higher : Politics	Grade						Total	Grade					
	A	B	C	D	N	A		B	C	D	N		
	Number	Number	Number	Number	Number	%		%	%	%	%		
2016	276	210	136	50	88	760	36.3	27.6	17.9	6.6	11.6	100.0	
2017	285	223	197	78	147	930	30.6	24.0	21.2	8.4	15.8	100.0	
2018	359	265	243	104	207	1,178	30.5	22.5	20.6	8.8	17.6	100.0	
2019	411	360	231	116	76	1,194	34.4	30.2	19.3	9.7	6.4	100.0	
2020 Starting Point Distribution	452	396	254	128	84	1,313	34.4	30.2	19.3	9.7	6.4	100.0	
2020 Estimates	602	342	263	58	48	1,313	45.8	26.0	20.0	4.4	3.7	100.0	
Moderated Outcome	536	375	261	84	57	1,313	40.8	28.6	19.9	6.4	4.3	100.0	

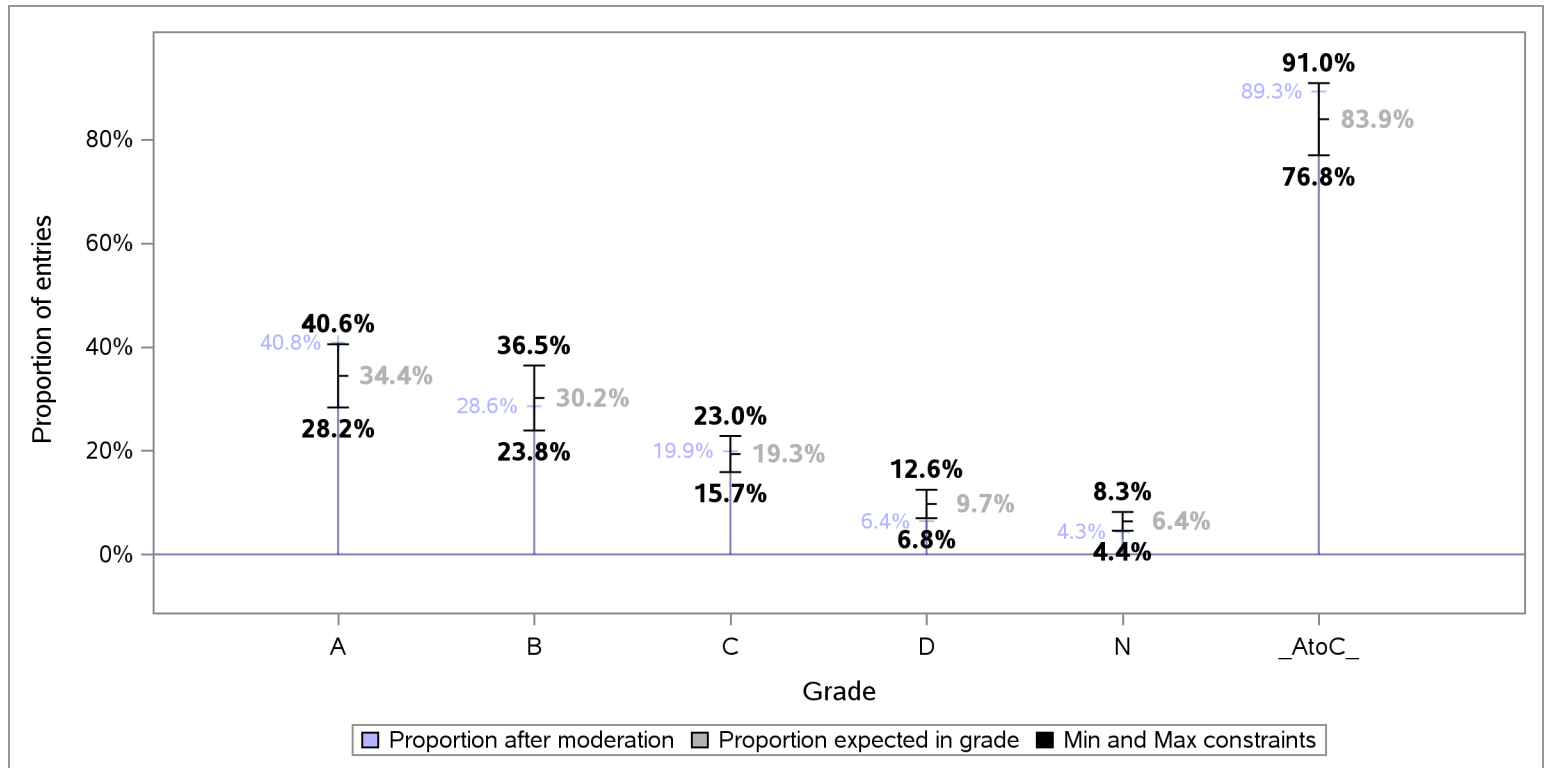


<sup>1</sup>Some of the figures in this summary report may differ slightly to figures in the Attainment Statistics (August) 2020 publication. This is because the the Attainment Statistics (August) 2020 publication excludes those candidates who were removed after the moderation process, including candidates who have subsequently been withdrawn by their presenting centre.

### Tolerance ranges for the Starting Point Distribution

To allow for year-on-year variability in attainment, tolerance ranges were derived for each projected grade proportion in the Starting Point Distribution, and the A to C rate. For each grade, the tolerance range is derived from the 90% confidence intervals for mean historic attainment from 2016 to 2019.

The chart below shows the projected proportion for each grade, as per the Starting Point Distribution, the tolerance range for each projected proportion and proportion per grade after the moderation process.



### Redistribution of estimates by grade as a result of moderation

The table below shows the number and proportion of entries that were estimated for each grade, and how these were redistributed to other grades as a result of the moderation process.

Estimated Grade	Total Entries	Moderated Grade									
		A		B		C		D		N	
		Entries	% Entries	Entries	% Entries	Entries	% Entries	Entries	% Entries	Entries	% Entries
ALL	1,313	536	40.8	375	28.6	261	19.9	84	6.4	57	4.3
A	602	512	85.0	84	14.0	6	1.0	*	*	*	*
B	342	24	7.0	277	81.0	41	12.0	*	*	*	*
C	263	*	*	14	5.3	211	80.2	38	14.4	*	*
D	58	*	*	*	*	*	*	45	77.6	10	17.2
N	48	*	*	*	*	*	*	*	*	47	97.9



### Centre Moderation Summary

As detailed in the SQA National Qualifications 2020 Awarding – Methodology Report, the moderation was undertaken at centre level. SQA did not adjust estimates for new centres presenting on this course, as there was no historical evidence on which to base adjustment. The table below provides key summary information about the centre moderation process and outcomes for this course.

Moderation Summary	Number	Percentage of Total
Entries for this course	1,313	100.0%
Centres presenting for this course	114	100.0%
New Centres	21	18.4%
Entries from New Centres	182	13.9%
Highest Entries Presented by a Centre	31	.
Median Entries Presented by Centres	11	.
Lowest Entries Presented by a Centre	1	.
Centres Adjusted	60	52.6%
Centres Not Adjusted	54	47.4%
Entries Adjusted	221	16.8%
Entries Adjusted Down	179	13.6%
Entries Adjusted Up	42	3.2%
Entries Adjusted Down by One Grade	173	13.2%
Entries Adjusted Up by One Grade	42	3.2%
Entries Adjusted Down by Two Grades	6	0.5%
Entries Adjusted Up by Two Grades	*	*
Entries Adjusted Down by Three Grades	*	*
Entries Adjusted Up by Three Grades	*	*
Entries Adjusted Down by Four Grades	*	*
Entries Adjusted Up by Four Grades	*	*
Entries Adjusted from A-C to D	38	2.9%
Entries Adjusted from A-C to N	*	*
Entries Adjusted from D to A-C	*	*
Entries Adjusted from N to A-C	*	*