

Moderation Summary Report Subject: Psychology Level: Higher

This report summarises the context for moderation of the estimates received for this course, ie, historic attainment, the 2020 Starting Point Distributions and 2020 Estimates. It also provides the key outcomes of the moderation process for this course.

Full details of the moderation approach and the Attainment Statistics (August) 2020 can be found on SQA's statistics page (<https://www.sqa.org.uk/statistics>)¹.

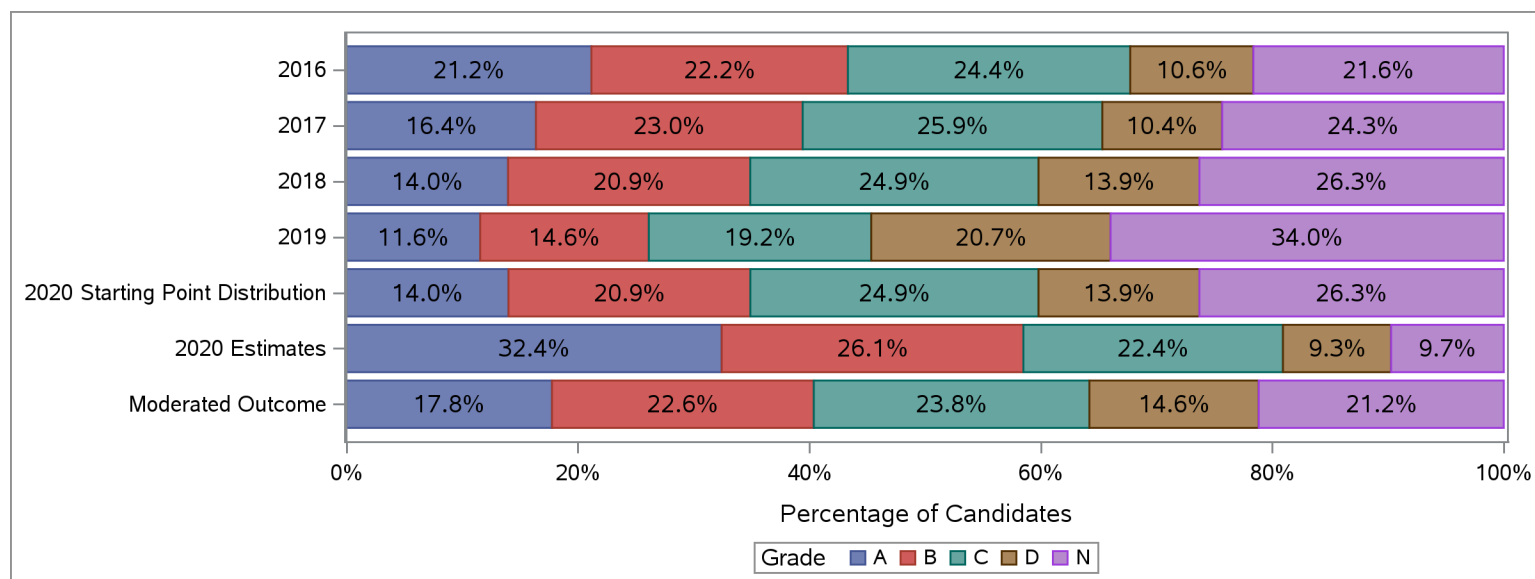
Furthermore, where small numbers of entries (values less than 5) could risk identification of individuals, those numbers and associated percentages have been suppressed in the tables below with an asterisk.

Historic Attainment, Starting Point Distribution, Estimates Received and Moderated Outcome

The table and chart below show:

- (a) historic attainment by grade for this course for years 2016 to 2019;
- (b) the Starting Point Distribution, which provides a projected distribution for 2020 attainment for this course, based on quantitative and qualitative analyses by SQA;
- (c) the distribution of 2020 estimates received from centres for this course (pre moderation); and
- (d) the distribution of grades after the moderation process.

Higher : Psychology	Grade						Total	Grade					
	A	B	C	D	N	A		B	C	D	N		
	Number	Number	Number	Number	Number	%		%	%	%	%		
2016	720	754	830	362	736	3,402	21.2	22.2	24.4	10.6	21.6	100.0	
2017	574	808	908	363	853	3,506	16.4	23.0	25.9	10.4	24.3	100.0	
2018	463	694	826	461	872	3,316	14.0	20.9	24.9	13.9	26.3	100.0	
2019	380	479	632	680	1,117	3,288	11.6	14.6	19.2	20.7	34.0	100.0	
2020 Starting Point Distribution	434	649	773	431	816	3,103	14.0	20.9	24.9	13.9	26.3	100.0	
2020 Estimates	1,006	809	696	290	302	3,103	32.4	26.1	22.4	9.3	9.7	100.0	
Moderated Outcome	551	702	739	454	657	3,103	17.8	22.6	23.8	14.6	21.2	100.0	



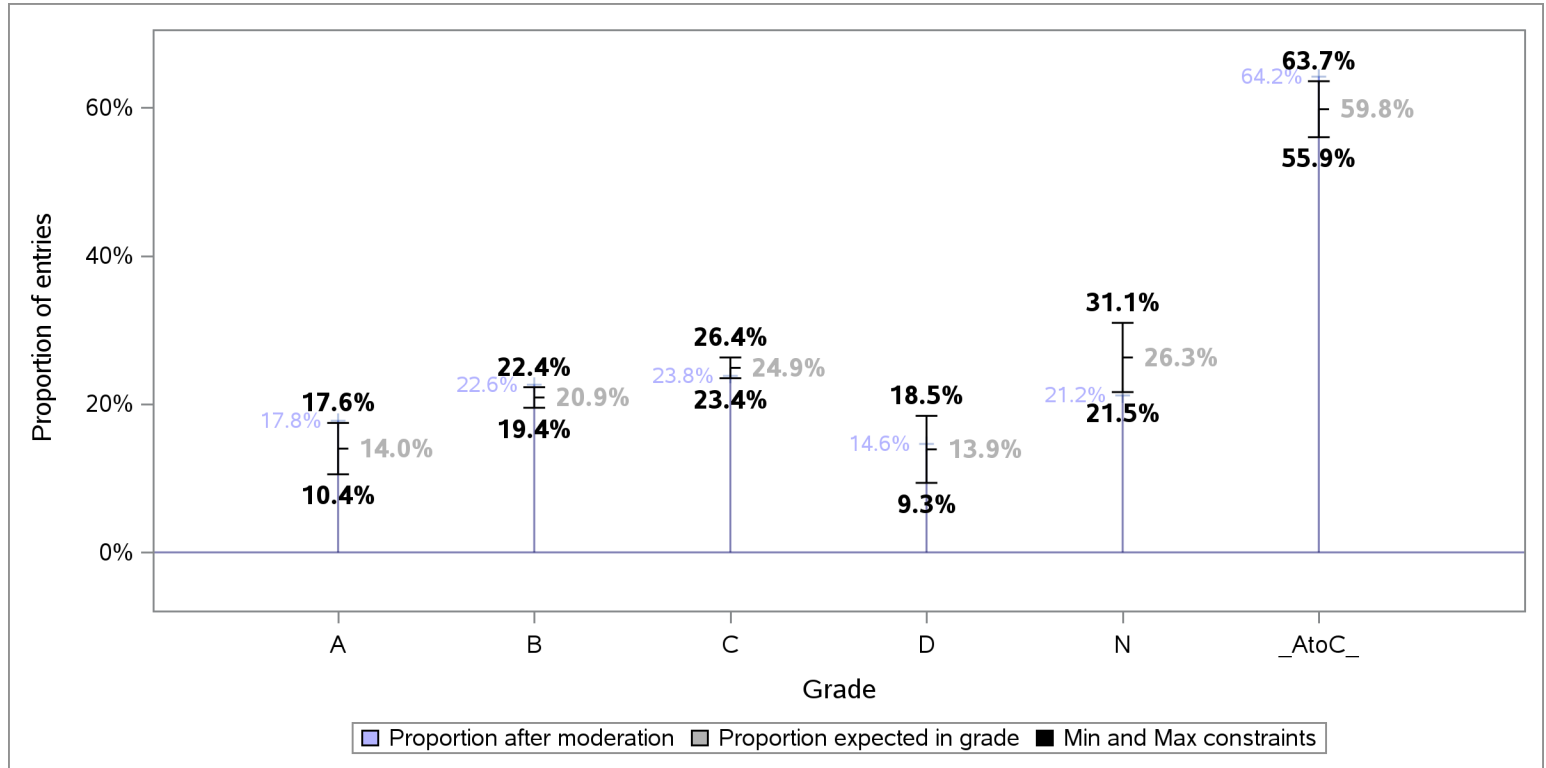
¹Some of the figures in this summary report may differ slightly to figures in the Attainment Statistics (August) 2020 publication.

This is because the the Attainment Statistics (August) 2020 publication excludes those candidates who were removed after the moderation process, including candidates who have subsequently been withdrawn by their presenting centre.

Tolerance ranges for the Starting Point Distribution

To allow for year-on-year variability in attainment, tolerance ranges were derived for each projected grade proportion in the Starting Point Distribution, and the A to C rate. For each grade, the tolerance range is derived from the 90% confidence intervals for mean historic attainment from 2016 to 2019.

The chart below shows the projected proportion for each grade, as per the Starting Point Distribution, the tolerance range for each projected proportion and proportion per grade after the moderation process.



Redistribution of estimates by grade as a result of moderation

The table below shows the number and proportion of entries that were estimated for each grade, and how these were redistributed to other grades as a result of the moderation process.

Estimated Grade	Total Entries	Moderated Grade									
		A		B		C		D		N	
		Entries	% Entries	Entries	% Entries	Entries	% Entries	Entries	% Entries	Entries	% Entries
ALL	3,103	551	17.8	702	22.6	739	23.8	454	14.6	657	21.2
A	1,006	534	53.1	364	36.2	100	9.9	8	0.8	*	*
B	809	17	2.1	315	38.9	311	38.4	143	17.7	23	2.8
C	696	*	*	23	3.3	276	39.7	195	28.0	202	29.0
D	290	*	*	*	*	52	17.9	89	30.7	149	51.4
N	302	*	*	*	*	*	*	19	6.3	283	93.7



Centre Moderation Summary

As detailed in the SQA National Qualifications 2020 Awarding – Methodology Report, the moderation was undertaken at centre level. SQA did not adjust estimates for new centres presenting on this course, as there was no historical evidence on which to base adjustment. The table below provides key summary information about the centre moderation process and outcomes for this course.

Moderation Summary	Number	Percentage of Total
Entries for this course	3,103	100.0%
Centres presenting for this course	83	100.0%
New Centres	5	6.0%
Entries from New Centres	89	2.9%
Highest Entries Presented by a Centre	222	.
Median Entries Presented by Centres	24	.
Lowest Entries Presented by a Centre	1	.
Centres Adjusted	74	89.2%
Centres Not Adjusted	9	10.8%
Entries Adjusted	1,606	51.8%
Entries Adjusted Down	1,495	48.2%
Entries Adjusted Up	111	3.6%
Entries Adjusted Down by One Grade	1,019	32.8%
Entries Adjusted Up by One Grade	111	3.6%
Entries Adjusted Down by Two Grades	445	14.3%
Entries Adjusted Up by Two Grades	*	*
Entries Adjusted Down by Three Grades	31	1.0%
Entries Adjusted Up by Three Grades	*	*
Entries Adjusted Down by Four Grades	*	*
Entries Adjusted Up by Four Grades	*	*
Entries Adjusted from A-C to D	346	11.2%
Entries Adjusted from A-C to N	225	7.3%
Entries Adjusted from D to A-C	52	1.7%
Entries Adjusted from N to A-C	*	*