



SQ20/H/01

Geography

Date — Not applicable

Duration — 2 hours and 15 minutes

Total marks — 60

SECTION 1 — PHYSICAL ENVIRONMENTS — 15 marks

Attempt ALL questions.

SECTION 2 — HUMAN ENVIRONMENTS — 15 marks

Attempt ALL questions.

SECTION 3 — GLOBAL ISSUES — 20 marks

Attempt TWO questions.

SECTION 4 — APPLICATION OF GEOGRAPHICAL SKILLS — 10 marks

Attempt the question.

Credit will be given for appropriately labelled sketch maps and diagrams.

Write your answers clearly in the answer booklet provided. In the answer booklet you must clearly identify the question number you are attempting.

Use **blue** or **black** ink.

Before leaving the examination room you must give your answer booklet to the Invigilator; if you do not you may lose all the marks for this paper.



SECTION 1: PHYSICAL ENVIRONMENTS — 15 marks

Attempt ALL questions

Question 1

Corries are landscape features present in glaciated upland areas.

Explain the conditions and processes involved in the formation of a corrie.
You may wish to use an annotated diagram or diagrams.

5

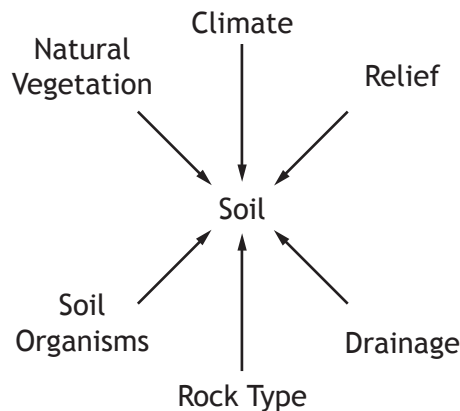
Question 2

Look at Diagram Q2.

Explain how factors such as those shown in the diagram affect the formation of a brown earth soil.

6

Diagram Q2: Main factors affecting soil formation



Question 3

Explain why there is a surplus of solar energy in the tropical latitudes and a deficit of solar energy towards the poles.

You may wish to use an annotated diagram or diagrams.

4

SECTION 2: HUMAN ENVIRONMENTS — 15 marks

Attempt ALL questions

Question 1

Nigeria conducted a population census in 2006. However, the chairperson of the National Population Commission stated in 2012 that 'Nigeria has no data. People can't really tell you precisely what the population is'. Another census will be conducted in 2016.

Explain the problems of collecting accurate population data in developing countries.

6

Question 2

2012 saw a significant increase in Germany's population. This was not due to a sudden baby boom, but to the many immigrants moving to the country. Experts point out this could result in both benefits and problems.

Referring to a named case study, analyse the impact of migration on **either** the donor country **or** the receiving country.

5

Question 3

Referring to **either** a named rainforest **or** a named semi-arid area, explain the techniques used to combat rural land degradation.

4

SECTION 3: GLOBAL ISSUES — 20 marks

Attempt TWO questions

Question 1	River Basin Management	Page 5
Question 2	Development and Health	Page 6
Question 3	Global Climate Change	Page 7
Question 4	Trade, Aid and Geopolitics	Page 8
Question 5	Energy	Page 9

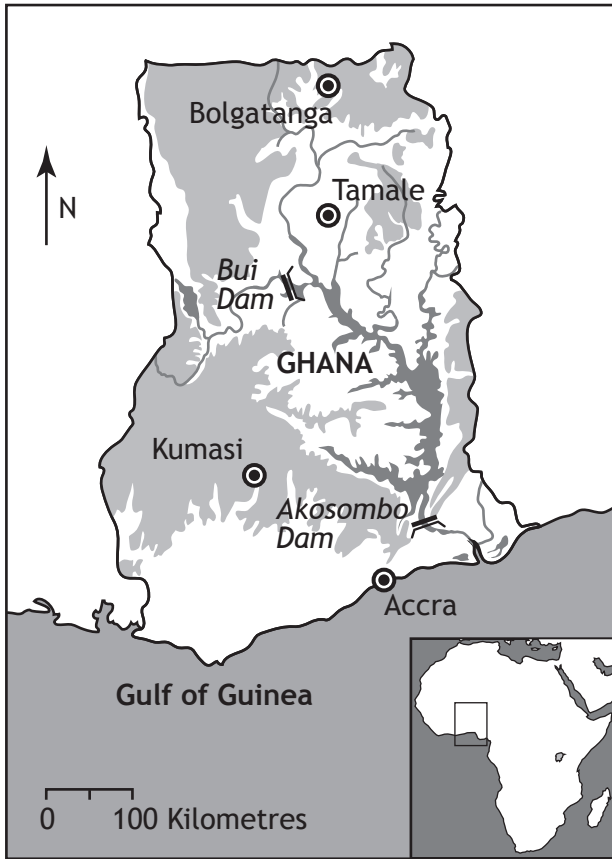
Question 1 — River Basin Management

(a) Study Map/Data Q7 and Table Q7

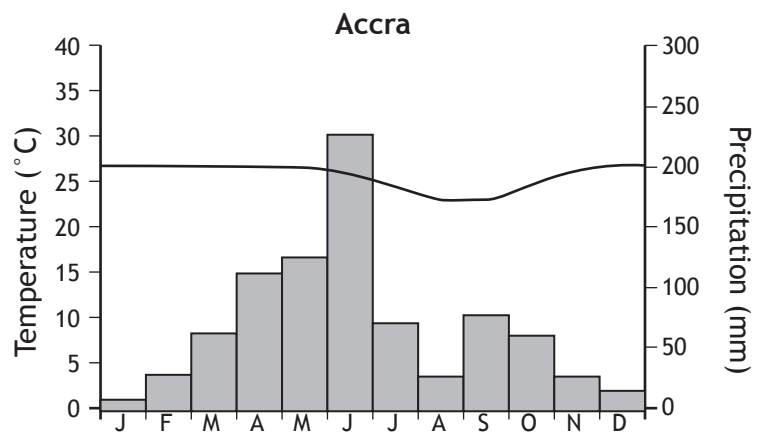
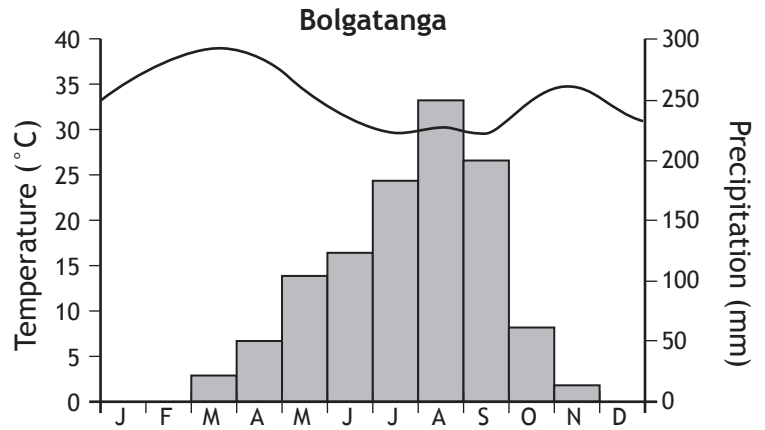
Explain why there is a need for water management in Ghana.

5

Map/Data Q7



City
 Dam
 Land over 500m
 River



Key: Precipitation (mm)
 Temperature (°C)

Table Q7: Ghana Development Data

Current population	24.28 million
Projected population by 2040	35.8 million
Labour force by occupation	56% in agriculture 15% in industry 29% in services
% of population with access to electricity	45%

(b) Explain the negative impacts of any named water management project.

In your answer you must refer to socio-economic and environmental impacts.

5

Question 2 — Development and Health

For malaria or any other water-related disease that you have studied:

- (a) explain the methods used to try and control the spread of the disease; **and**
- (b) evaluate the effectiveness of these methods.

10

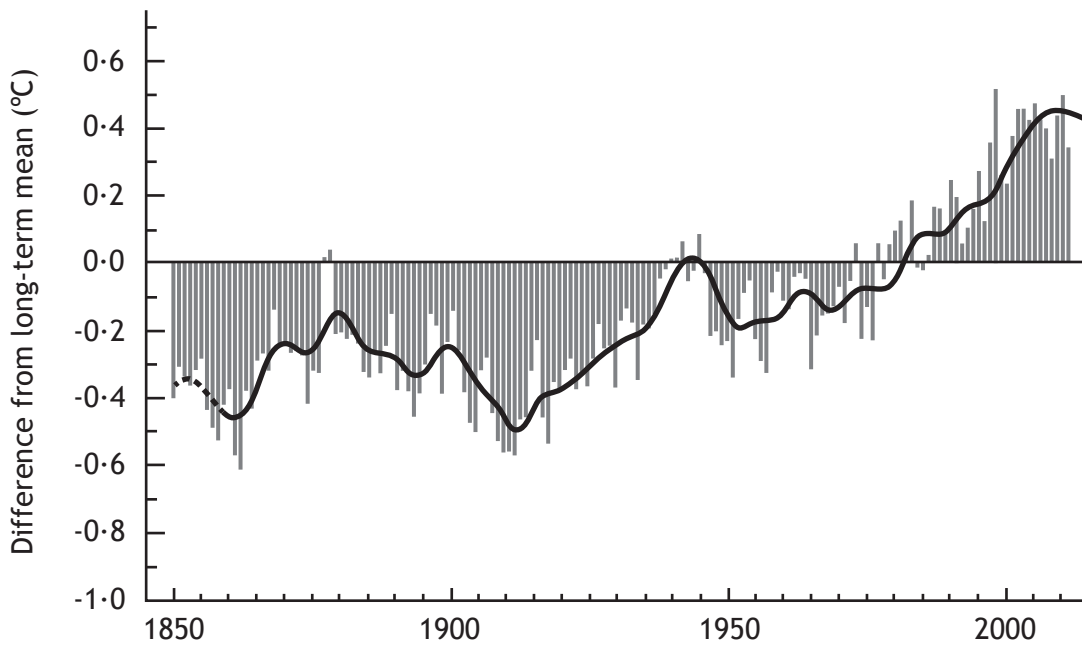
Question 3 — Global Climate Change

Look at Diagrams Q9a and Q9b.

- (a) Explain the human activities which have contributed to the changes in global air temperatures.

5

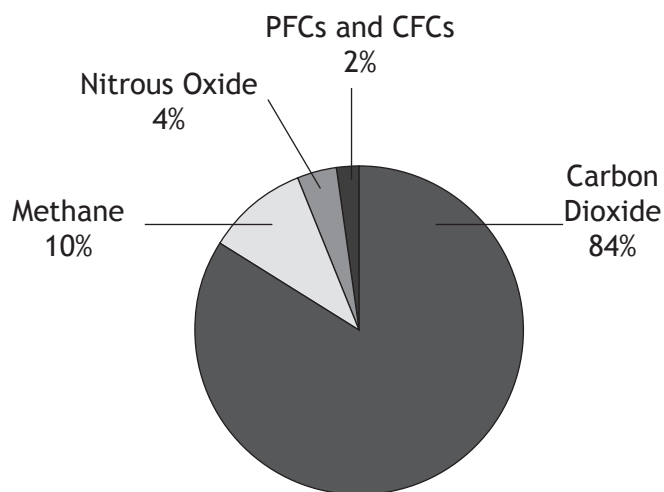
Diagram Q9a: Global air temperatures 1850–2011



- (b) Discuss the possible impacts of global warming throughout the world.

5

Diagram Q9b: Greenhouse gases, emissions by type



Question 4 — Trade, Aid and Geopolitics

(a) Study Table Q10.

Suggest reasons for the inequalities in trade shown in the table below.

5

Table Q10: Selected development indicators

		Germany	Thailand	Kenya
Trade statistics (million US\$, 2012)	Exports	1,492,000	226,200	5,942
	Imports	1,276,000	217,800	14,390
	Balance of trade	216,000	8,400	-8,448
Economic Indicators (2012)	GDP per capita (US\$) (PPP*)	39,100	1,800	10,300
	% employed in agriculture	2%	38%	75%
	% employed in manufacturing	24%	14%	10%
	% employed in services	74%	48%	5%
	Main exports	Motor vehicles, machinery, chemicals, computer and electronic products	Electronics, computer parts, automobiles and parts, electrical appliances, machinery and equipment, textiles	Tea, horticultural products, coffee, petroleum products, fish

PPP* = purchasing power parity

(b) Explain the strategies used to reduce inequalities in world trade.

5

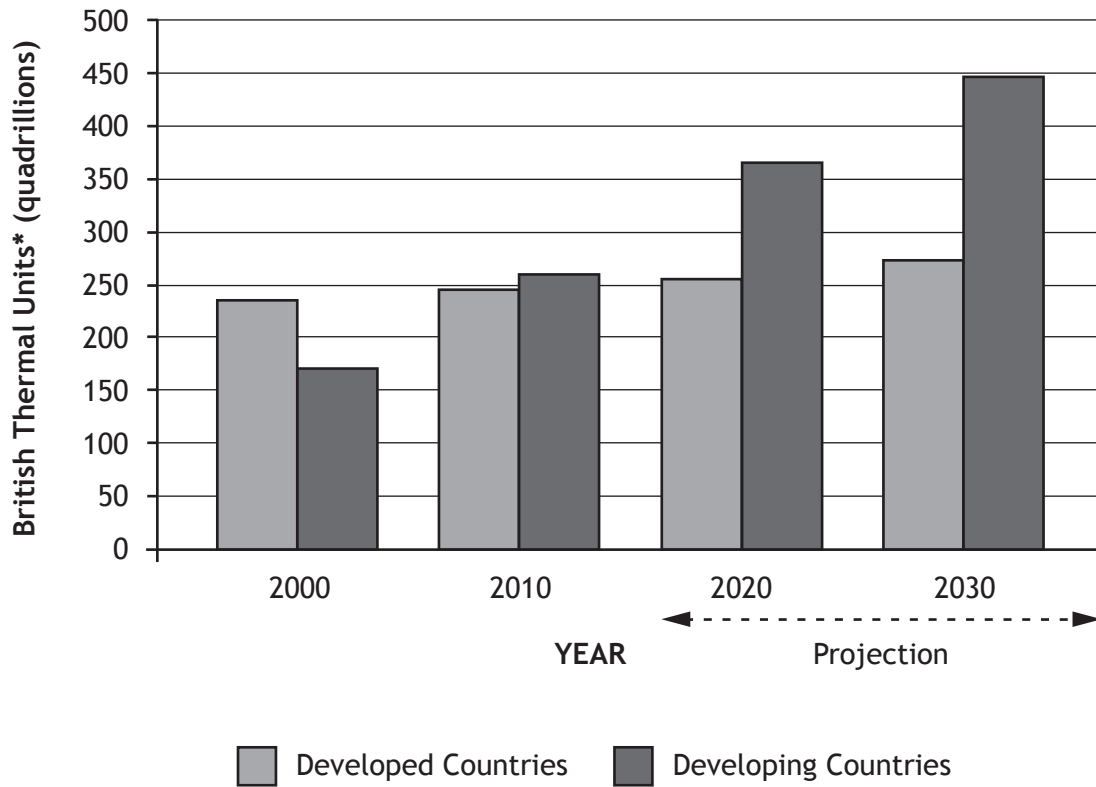
Question 5 — Energy

(a) Look at Graph Q11.

Explain the differences in energy consumption between developed and developing countries.

4

Graph Q11: World energy consumption



(b) Referring to different countries, evaluate the suitability of renewable approaches to generating energy.

6

SECTION 4: APPLICATION OF GEOGRAPHICAL SKILLS — 10 marks

Attempt the question

Question 1

The city of Lincoln has decided to hold a 10k race. Working to the brief below, a route has been proposed.

Brief for Lincoln 10k race

The route should:

- be suitable for all participants
- cause minimum disruption to people and business in the local area
- promote business in the local area
- have a suitable start/finish line
- be scenic/interesting for participants.

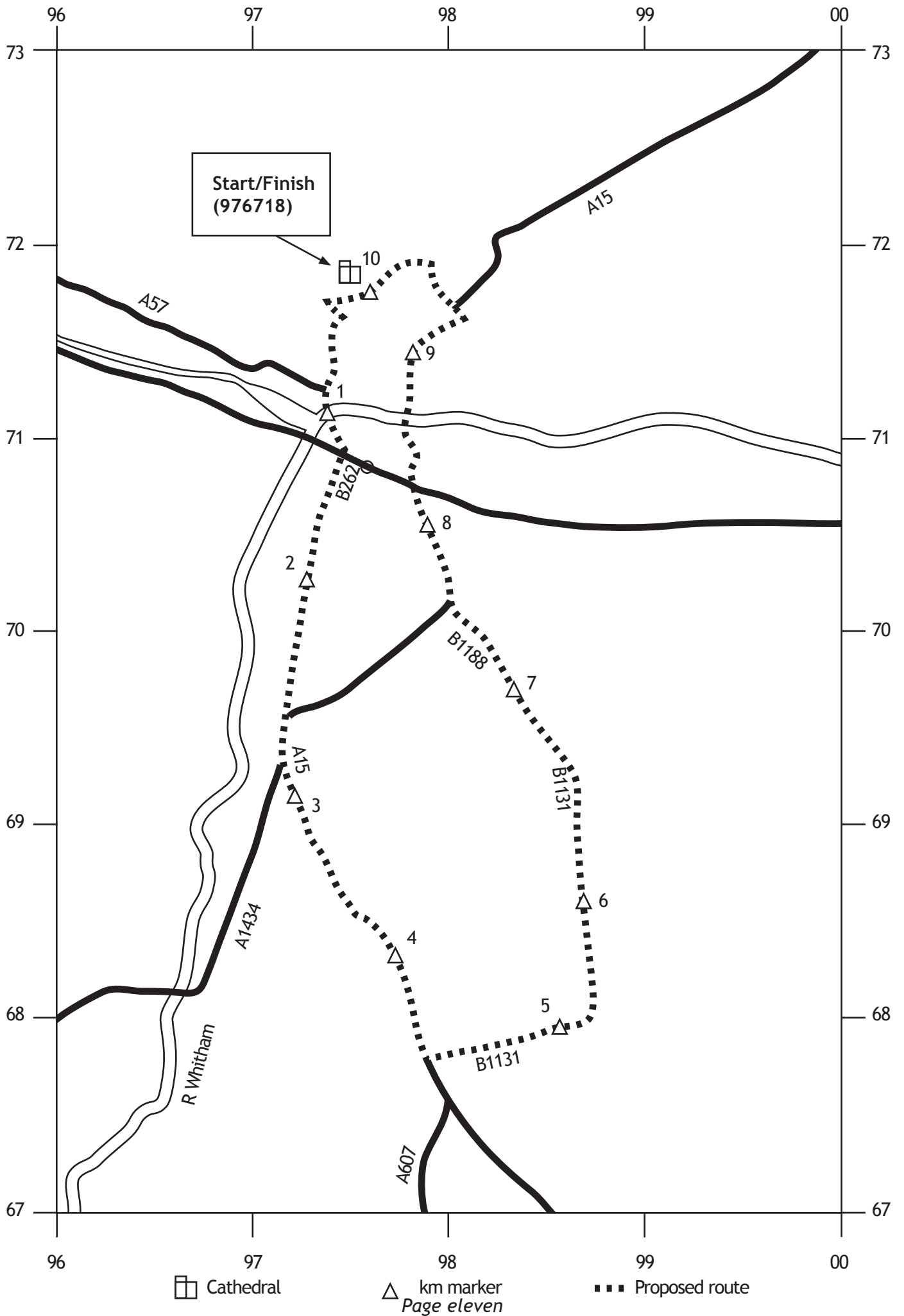
Study Map Q12: Proposed 10k Route; OS Map (Extract 1349/EXP272: Lincoln); Diagram Q12; and Graph Q12.

Referring to map evidence and other information from the sources, evaluate the suitability of the proposed route (Map Q12) in relation to the brief for the 10k race.

You should suggest possible improvements to the route.

10

Map Q12: Proposed 10 k route



Question 1 (continued)

Diagram Q12

Lincoln 10 k Run Sunday 16th February



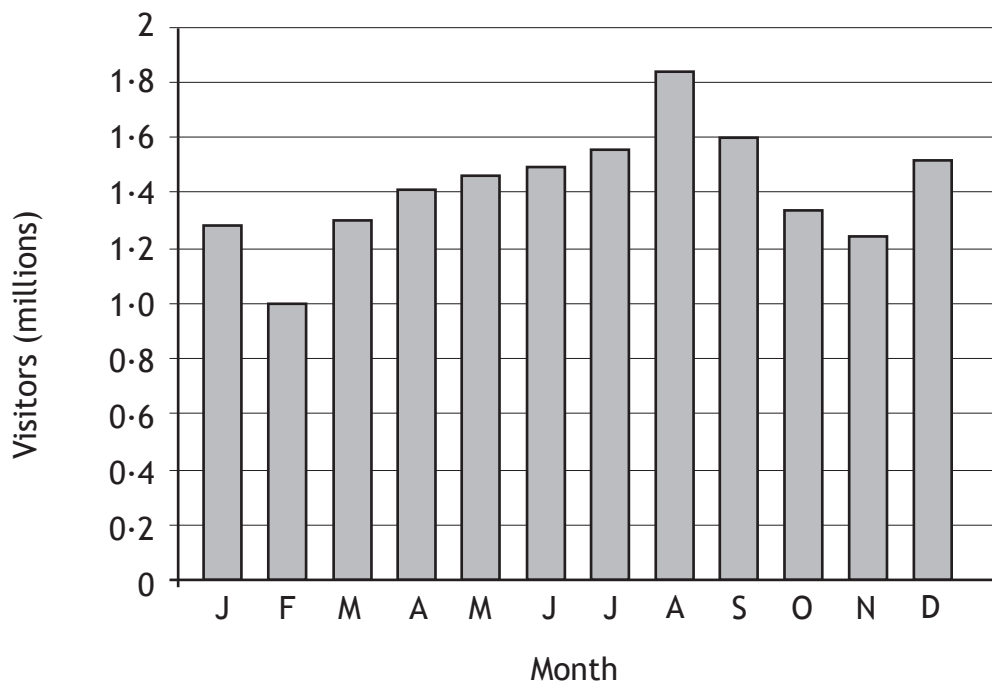
Join over 5,000 people taking part

Live music from local bands

Safe route along closed roads

For further information on the race and nearby accommodation go to:
www.visitlincoln.co.uk

Graph Q12: Visitor numbers to Lincoln



[END OF SPECIMEN QUESTION PAPER]

Acknowledgement of Copyright

Questions 1 Diagram Q12 Image from Peter R Foster IDMA/Shutterstock.com