

Moderation Summary Report Subject: Sociology Level: National 5

This report summarises the context for moderation of the estimates received for this course, ie, historic attainment, the 2020 Starting Point Distributions and 2020 Estimates. It also provides the key outcomes of the moderation process for this course.

Full details of the moderation approach and the Attainment Statistics (August) 2020 can be found on SQA's statistics page (<https://www.sqa.org.uk/statistics>)¹.

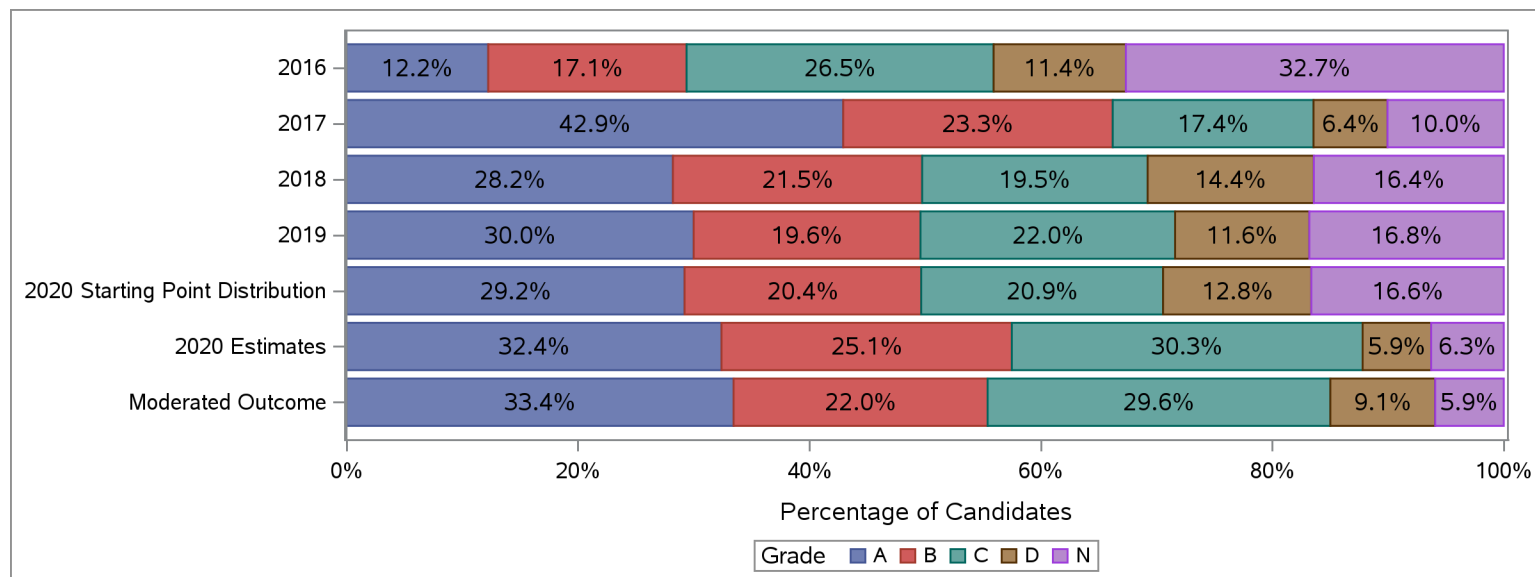
Furthermore, where small numbers of entries (values less than 5) could risk identification of individuals, those numbers and associated percentages have been suppressed in the tables below with an asterisk.

Historic Attainment, Starting Point Distribution, Estimates Received and Moderated Outcome

The table and chart below show:

- (a) historic attainment by grade for this course for years 2016 to 2019;
- (b) the Starting Point Distribution, which provides a projected distribution for 2020 attainment for this course, based on quantitative and qualitative analyses by SQA;
- (c) the distribution of 2020 estimates received from centres for this course (pre moderation); and
- (d) the distribution of grades after the moderation process.

National 5 : Sociology	Grade						Total	Grade					
	A	B	C	D	N	A		B	C	D	N	Total	
	Number	Number	Number	Number	Number	Number		%	%	%	%	%	%
2016	30	42	65	28	80	245	12.2	17.1	26.5	11.4	32.7	100.0	
2017	94	51	38	14	22	219	42.9	23.3	17.4	6.4	10.0	100.0	
2018	55	42	38	28	32	195	28.2	21.5	19.5	14.4	16.4	100.0	
2019	75	49	55	29	42	250	30.0	19.6	22.0	11.6	16.8	100.0	
2020 Starting Point Distribution	84	59	60	37	48	287	29.2	20.4	20.9	12.8	16.6	100.0	
2020 Estimates	93	72	87	17	18	287	32.4	25.1	30.3	5.9	6.3	100.0	
Moderated Outcome	96	63	85	26	17	287	33.4	22.0	29.6	9.1	5.9	100.0	



¹Some of the figures in this summary report may differ slightly to figures in the Attainment Statistics (August) 2020 publication.

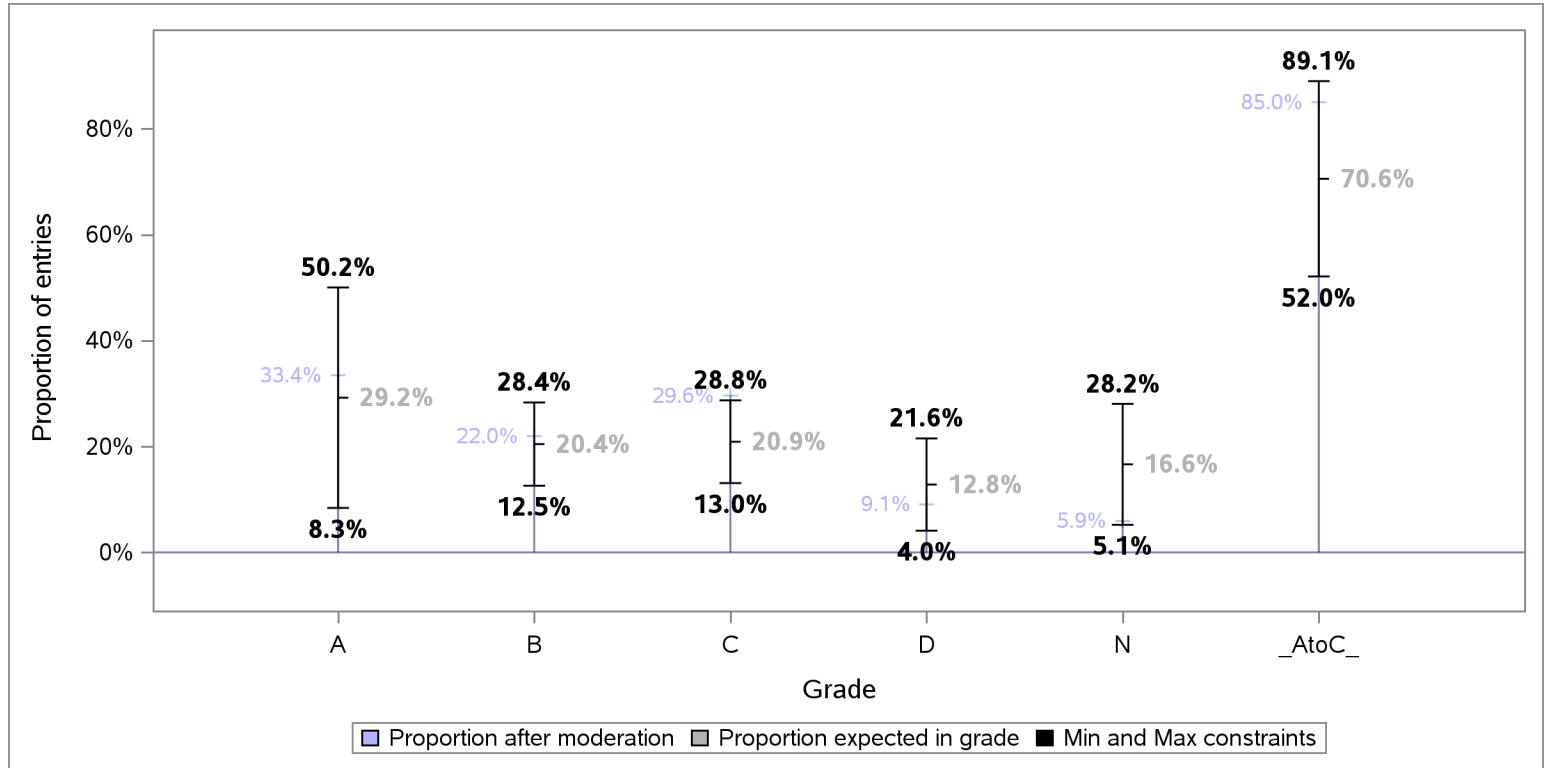
This is because the the Attainment Statistics (August) 2020 publication excludes those candidates who were removed after the moderation process, including candidates who have subsequently been withdrawn by their presenting centre.



Tolerance ranges for the Starting Point Distribution

To allow for year-on-year variability in attainment, tolerance ranges were derived for each projected grade proportion in the Starting Point Distribution, and the A to C rate. For each grade, the tolerance range is derived from the 90% confidence intervals for mean historic attainment from 2016 to 2019.

The chart below shows the projected proportion for each grade, as per the Starting Point Distribution, the tolerance range for each projected proportion and proportion per grade after the moderation process.



Redistribution of estimates by grade as a result of moderation

The table below shows the number and proportion of entries that were estimated for each grade, and how these were redistributed to other grades as a result of the moderation process.

Estimated Grade	Total Entries	Moderated Grade									
		A		B		C		D		N	
		Entries	% Entries	Entries	% Entries	Entries	% Entries	Entries	% Entries	Entries	% Entries
ALL	287	96	33.4	63	22.0	85	29.6	26	9.1	17	5.9
A	93	93	100.0	*	*	*	*	*	*	*	*
B	72	*	*	58	80.6	11	15.3	*	*	*	*
C	87	*	*	*	*	74	85.1	8	9.2	*	*
D	17	*	*	*	*	*	*	17	100.0	*	*
N	18	*	*	*	*	*	*	*	*	17	94.4



Centre Moderation Summary

As detailed in the SQA National Qualifications 2020 Awarding – Methodology Report, the moderation was undertaken at centre level. SQA did not adjust estimates for new centres presenting on this course, as there was no historical evidence on which to base adjustment. The table below provides key summary information about the centre moderation process and outcomes for this course.

Moderation Summary	Number	Percentage of Total
Entries for this course	287	100.0%
Centres presenting for this course	19	100.0%
New Centres	5	26.3%
Entries from New Centres	55	19.2%
Highest Entries Presented by a Centre	81	.
Median Entries Presented by Centres	8	.
Lowest Entries Presented by a Centre	1	.
Centres Adjusted	8	42.1%
Centres Not Adjusted	11	57.9%
Entries Adjusted	28	9.8%
Entries Adjusted Down	19	6.6%
Entries Adjusted Up	9	3.1%
Entries Adjusted Down by One Grade	19	6.6%
Entries Adjusted Up by One Grade	9	3.1%
Entries Adjusted Down by Two Grades	*	*
Entries Adjusted Up by Two Grades	*	*
Entries Adjusted Down by Three Grades	*	*
Entries Adjusted Up by Three Grades	*	*
Entries Adjusted Down by Four Grades	*	*
Entries Adjusted Up by Four Grades	*	*
Entries Adjusted from A-C to D	8	2.8%
Entries Adjusted from A-C to N	*	*
Entries Adjusted from D to A-C	*	*
Entries Adjusted from N to A-C	*	*