



National  
Qualifications  
2018

**X804/75/11**

**Art and Design**

WEDNESDAY, 30 MAY

1:00 PM – 2:30 PM

---

**Total marks — 50**

**SECTION 1 — EXPRESSIVE ART STUDIES — 25 marks**

Attempt Question 1 and ONE other question.

**SECTION 2 — DESIGN STUDIES — 25 marks**

Attempt Question 7 and ONE other question.

Write your answers clearly in the answer booklet provided. In the answer booklet you must clearly identify the question number you are attempting.

You may use sketches to illustrate your answers.

Use **blue** or **black** ink.

Before leaving the examination room you must give your answer booklet to the Invigilator; if you do not, you may lose all the marks for this paper.



\* X 8 0 4 7 5 1 1 \*

## SECTION 1 — EXPRESSIVE ART STUDIES — 25 marks

Attempt this question.

1. Identify **two artworks** by different artists that you have studied. These should be based on similar *subject matter* and/or the same *theme*.

(a) With reference to these two selected artworks, comment on:

- *subject matter/imagery*
- *tone*
- *media handling and/or techniques*.

Which of the two artworks has the most visual impact? Give **two** justified reasons.

10

(b) Select **one artist** from part (a).

Explain the impact of social, cultural and/or other influences on any of their work and practice.

5

## SECTION 1 — EXPRESSIVE ART STUDIES (continued)

Attempt ONE question from Q2, Q3, Q4, Q5 or Q6.

Read your selected question and the notes on the illustration carefully.

Image for Q2



*Frostbitten* (1962) by Andrew Wyeth  
watercolour on paper (41 × 60 cm)

2. Comment on this painting, referring to:

- *composition*
- *colour*
- *media handling and/or techniques.*

What is your opinion on the mood and atmosphere communicated by this painting?  
Give **two** justified reasons.

10

[Turn over



## SECTION 1 — EXPRESSIVE ART STUDIES (continued)

Image for Q3



*City with Animals* (1919) by Max Ernst  
oil paint on canvas (67 × 63 cm)

3. Comment on this painting, referring to:

- *composition*
- *colour*
- *mood and atmosphere.*

What is your opinion on the style of this painting? Give **two** justified reasons.

10



## SECTION 1 — EXPRESSIVE ART STUDIES (continued)

Image for Q4



*The Traveller* (2013) by Bruno Catalano  
bronze – life size

4. Comment on this sculpture, referring to:

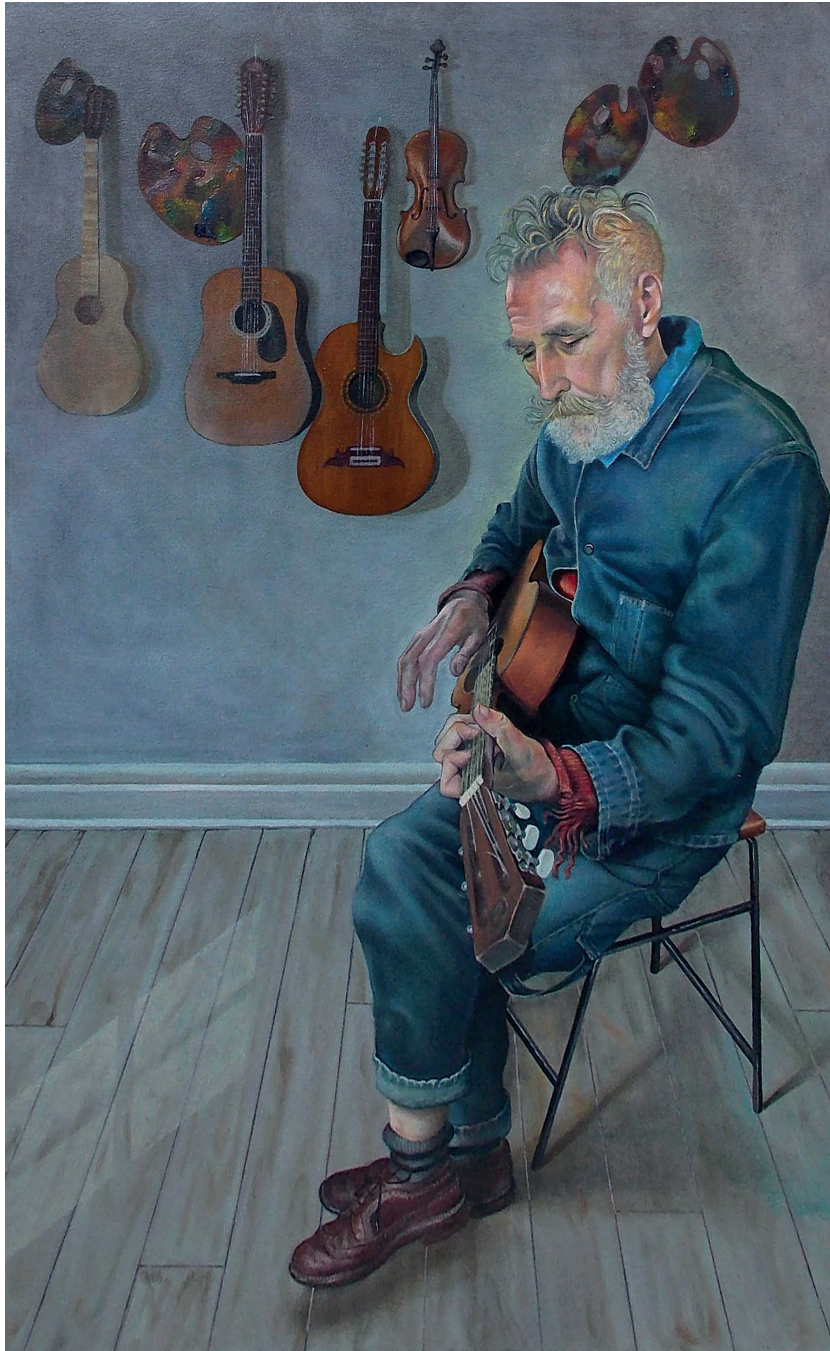
- *subject matter*
- *form*
- *visual impact.*

What does this sculpture communicate to you? Give **two** justified reasons.

10

[Turn over

Image for Q5



*John Byrne and His Guitars* (2014) by Mark Mulholland  
oil paint on canvas (84 × 54 cm)

5. Comment on this painting, referring to:

- *composition*
- *colour*
- *media handling and/or techniques.*

What does this painting communicate to you? Give **two** justified reasons.

10



## SECTION 1 — EXPRESSIVE ART STUDIES (continued)

Image for Q6



*Ships in Distress off a Rocky Coast* (1667) by Ludolf Backhuysen  
oil paint on canvas (114 × 167 cm)

6. Comment on this painting, referring to:

- *composition*
- *colour*
- *visual impact.*

What is your opinion on the mood and atmosphere created in this painting? Give two justified reasons.

10

[Turn over



## SECTION 2 — DESIGN STUDIES — 25 marks

Attempt this question.

7. Identify **two designs** by different designers that you have studied who have worked in the same design area.

(a) With reference to these two selected designs, comment on:

- *function*
- *style*
- *materials and/or techniques.*

Which of the two designs is the most effective? Give **two** justified reasons.

**10**

(b) Select **one designer** from part (a).

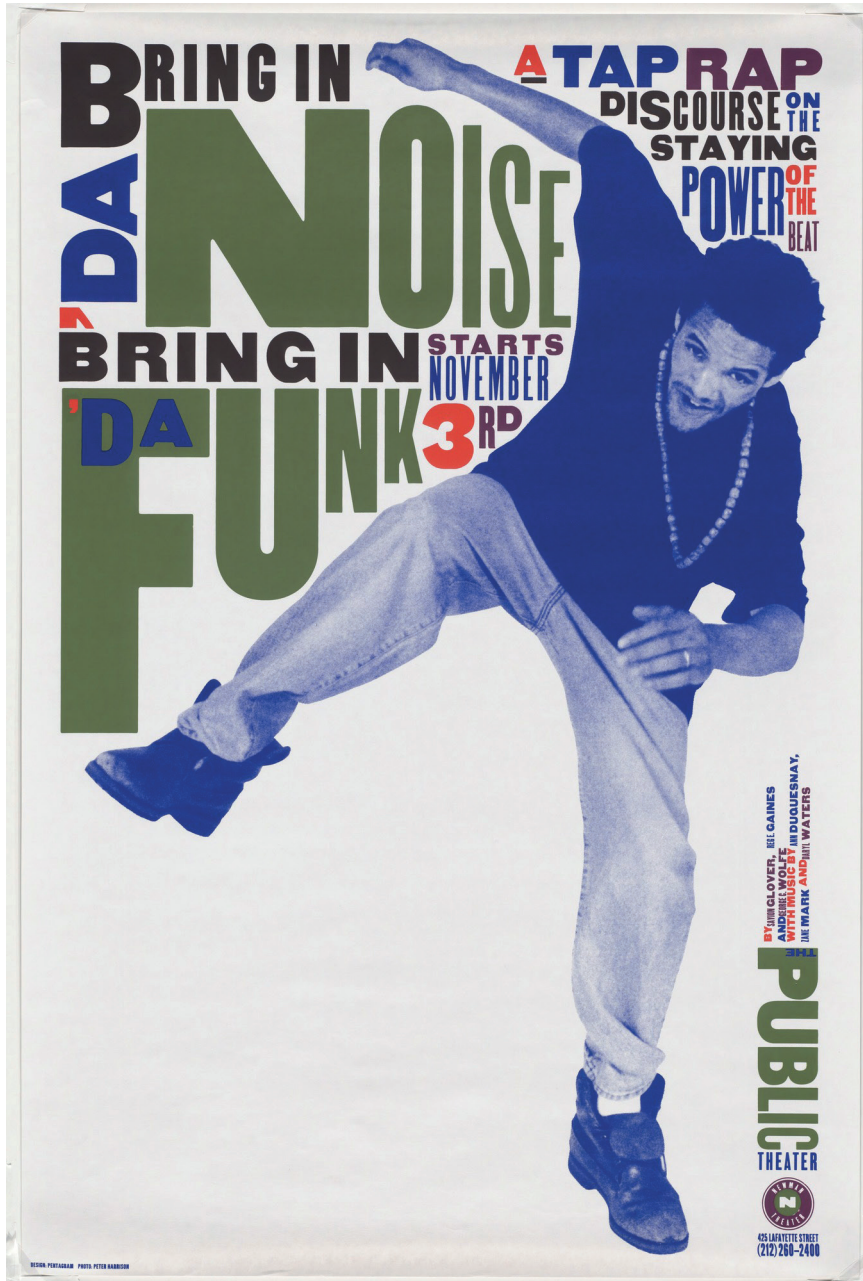
Explain the impact of social, cultural and/or other influences on any of their work and practice.

**5**

Attempt ONE question from Q8, Q9, Q10, Q11 or Q12.

Read your selected question and the notes on the illustration carefully.

Image for Q8



*Bring in 'Da Noise Bring in 'Da Funk poster (1995) designed by Paula Scher*

8. Comment on this poster design, referring to:

- *imagery*
- *lettering*
- *layout.*

What is your opinion on who might be the target audience for this poster? Give two justified reasons.

Image for Q9



*Beats by Dr Dre wireless headphones (2016) designed by Robert Brunner*  
materials: plastic, aluminium frame, leather ear cups

9. Comment on this design for wireless headphones, referring to:

- *fitness for purpose*
- *style*
- *target market.*

What is your opinion on the success of this product? Give **two** justified reasons.

10



Image for Q10



*JP Morgan Media Centre (1999), Lord's Cricket Ground,  
designed by Future Systems  
materials: aluminium and glass*

10. Comment on this design for a media centre, referring to:

- *source of inspiration*
- *form*
- *fitness for purpose.*

What is your opinion on how well the designer has created visual impact? Give **two** justified reasons.

10

Image for Q11



*The Hunterston Brooch (c.700 AD) by an unknown designer*  
materials: silver and gold with semi-precious stones (now missing)

11. Comment on this brooch design, referring to:

- *decoration*
- *materials and/or techniques*
- *function.*

What is your opinion on how well the designer has created visual impact? Give **two** justified reasons.



Image for Q12



Detail: hand painted  
panel from skirt

*Outfit (c.1780) by unknown designer*

dress materials: pink silk with hand painted panels, detachable lace sleeves

12. Comment on this design for an outfit, referring to:

- *wearability*
- *visual impact*
- *decoration.*

What is your opinion on who might have worn this outfit and on what type of occasion? Give two justified reasons.

10

[END OF QUESTION PAPER]



[BLANK PAGE]

DO NOT WRITE ON THIS PAGE

[BLANK PAGE]

DO NOT WRITE ON THIS PAGE

[BLANK PAGE]

DO NOT WRITE ON THIS PAGE

*Acknowledgement of Copyright*

- Section 1 Question 2 Image from [http://2.bp.blogspot.com/-LGEXvld51LM/VByH1L\\_JXxl/AAAAAAAAAGj8/46zTfYqOUhA/s1600/021.jpg](http://2.bp.blogspot.com/-LGEXvld51LM/VByH1L_JXxl/AAAAAAAAAGj8/46zTfYqOUhA/s1600/021.jpg)
- Section 1 Question 3 Image from <https://www.guggenheim.org/artwork/1128>
- Section 1 Question 4 Image from <http://brunocatalano.com/sculptures/catalano-bruno2.jpg>  
Image from <http://brunocatalano.com/sculptures/catalano-bruno2A.jpg>  
Image from <http://brunocatalano.com/sculptures/catalano-bruno2B.jpg>  
Image from <http://www.racnamagazine.it/wp-content/uploads/2014/12/brunogran.jpg>
- Section 1 Question 5 <http://markmulhollandart.webeden.co.uk/communities/4/004/012/567/544//images/4611389356.jpg>
- Section 1 Question 6 Image from [https://upload.wikimedia.org/wikipedia/commons/d/d5/Ludolf\\_Bakhuizen\\_-\\_Ships\\_in\\_Distress\\_off\\_a\\_Rocky\\_Coast\\_-\\_WGA01128.jpg](https://upload.wikimedia.org/wikipedia/commons/d/d5/Ludolf_Bakhuizen_-_Ships_in_Distress_off_a_Rocky_Coast_-_WGA01128.jpg)
- Section 2 Question 8 Image from <https://www.moma.org/collection/works/8838?locale=en>
- Section 2 Question 9 Image from [http://demandware.edgesuite.net/aajh\\_prd/on/demandware.static/-/Sites-beats-master-catalog/default/dw1e7d8a66/images/Unity%20Edition/France/MMHU2-zoom-fold.jpg](http://demandware.edgesuite.net/aajh_prd/on/demandware.static/-/Sites-beats-master-catalog/default/dw1e7d8a66/images/Unity%20Edition/France/MMHU2-zoom-fold.jpg)  
Image from [http://www.123dj.com/headphones/beats\\_by\\_dre\\_wireless\\_colors.jpg](http://www.123dj.com/headphones/beats_by_dre_wireless_colors.jpg)
- Section 2 Question 10 Image from <https://www.shutterstock.com/image-photo/london-uk-july-21-2015-view-311850908> e X p o s e / Shutterstock.com  
Image from [https://www.architectsjournal.co.uk/pictures/2000x2000f/it/4/3/6/1427436\\_Lords.jpg](https://www.architectsjournal.co.uk/pictures/2000x2000f/it/4/3/6/1427436_Lords.jpg)  
Image from <http://p.imgci.com/db/PICTURES/CMS/213700/213727.jpg> Mike Hewitt 2011 Getty Images
- Section 2 Question 11 Image from <http://www.scran.ac.uk/database/record.php?usi=000-190-001-182-C&scache=318mx2pptc&searchdb=scran>  
Image from <http://www.scran.ac.uk/database/record.php?usi=000-100-036-198-C&scache=318mx2pptc&searchdb=scran>
- Section 2 Question 12 Image from [http://www.kci.or.jp/archives/digital\\_archives/photos/27\\_xl\\_AC05312.jpg](http://www.kci.or.jp/archives/digital_archives/photos/27_xl_AC05312.jpg)