



National  
Qualifications  
2019

**X804/75/11**

**Art and Design**

FRIDAY, 24 MAY

1:00 PM – 2:30 PM

---

**Total marks — 50**

**SECTION 1 — EXPRESSIVE ART STUDIES — 25 marks**

Attempt Question 1 and ONE other question.

**SECTION 2 — DESIGN STUDIES — 25 marks**

Attempt Question 7 and ONE other question.

Write your answers clearly in the answer booklet provided. In the answer booklet you must clearly identify the question number you are attempting.

Use **blue** or **black** ink.

Before leaving the examination room you must give your answer booklet to the Invigilator; if you do not, you may lose all the marks for this paper.



\* X 8 0 4 7 5 1 1 \*

## SECTION 1 — EXPRESSIVE ART STUDIES — 25 marks

Attempt this question.

1. Identify **two artworks** by different artists you have studied. These should be based on similar *subject matter* and/or the same *theme*.

(a) With reference to these two selected artworks, comment on

- *composition/arrangement*
- *texture*
- *style*.

Which of the two artworks has the most visual impact? Give **two** justified reasons.

10

(b) Select **one artist** from part (a).

Explain the impact of social, cultural and/or other influences on any of their work and practice.

5

## SECTION 1 — EXPRESSIVE ART STUDIES (continued)

Attempt ONE question from Q2, Q3, Q4, Q5 or Q6.

Read your selected question and the notes on the illustration carefully.

Image for Q2



*Still Life* (1696) by Edward Collier

Oil paint on canvas (84 x 108 cm)

2. Comment on this painting, referring to

- *composition*
- *tone*
- *media handling and/or techniques.*

What is your opinion on the mood and atmosphere created in this painting? Give two justified reasons.

10

[Turn over



## SECTION 1 — EXPRESSIVE ART STUDIES (continued)

Image for Q3



*The Two Roberts* (1937–38) by Ian Fleming  
Oil paint on canvas (102 x 127 cm)

3. Comment on this painting, referring to

- *composition*
- *colour*
- *media handling and/or techniques.*

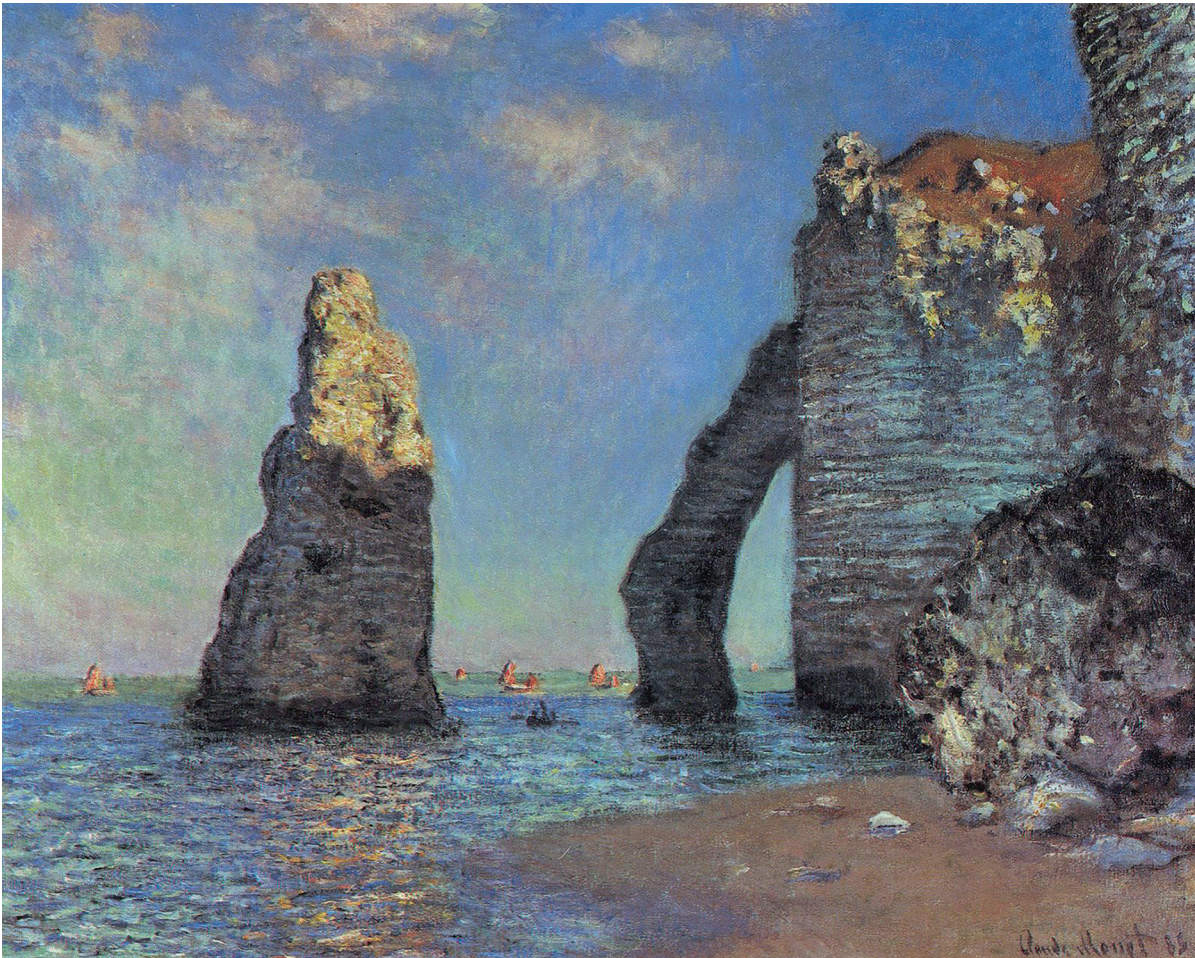
What does this painting communicate to you? Give two justified reasons.

10



## SECTION 1 — EXPRESSIVE ART STUDIES (continued)

Image for Q4



*The Cliffs at Étretat* (1885) by Claude Monet

Oil paint on canvas (65 x 81 cm)

4. Comment on this painting, referring to

- *composition*
- *texture*
- *colour.*

What is your opinion on the mood and atmosphere created in this painting? Give two justified reasons.

10

[Turn over



Image for Q5



*The Three Graces* (1999) by Niki de Saint Phalle  
Fibreglass and mosaic (ranging in height from 3.7 to 4.6 m)

5. Comment on these sculptures, referring to

- *colour*
- *pattern*
- *pose.*

What is your opinion on the visual impact of this sculpture? Give **two** justified reasons.

## SECTION 1 — EXPRESSIVE ART STUDIES (continued)

Image for Q6



*Tulips and Irises* (1990) by Dame Elizabeth Blackadder

Watercolour on paper (70 x 104 cm)

6. Comment on this painting, referring to

- *composition*
- *colour*
- *media handling and/or techniques.*

What is your opinion on the visual impact of this painting? Give **two** justified reasons.

10

[Turn over



## SECTION 2 — DESIGN STUDIES — 25 marks

Attempt this question

7. Identify **two designs** by different designers that you have studied who have worked in the same design area.

(a) With reference to these two selected designs, comment on

- *fitness for purpose*
- *materials and/or techniques*
- *visual impact.*

Which of these two designs is the most effective? Give **two** justified reasons.

10

(b) Select **one designer** from part (a).

Explain the impact of social, cultural and/or other influences on any of their work and practice.

5

Attempt ONE question from Q8, Q9, Q10, Q11 or Q12.

Read your selected question and the notes on the illustration carefully.

Image for Q8



Poster design (1933) by Henry Reb

In French, 'été' means summer and 'hiver' means winter

8. Comment on this poster design, referring to

- layout
- imagery
- lettering.

What is your opinion on the style of this poster? Give **two** justified reasons.

10

## SECTION 2 — DESIGN STUDIES (continued)

Image for Q9



*Whistling Bird Kettle* (1985) by Michael Graves for Alessi

Materials: stainless steel and plastic

The kettle is placed on the hob and when the water inside boils, the bird whistles.

9. Comment on this product, referring to

- *fitness for purpose*
- *materials*
- *style.*

What is your opinion on who would be the target market for this kettle? Give **two** justified reasons.



## SECTION 2 — DESIGN STUDIES (continued)

Image for Q10



*Prince Felipe Science Museum, Valencia (2003) by Santiago Calatrava*

Materials: concrete, steel and glass

10. Comment on this building design, referring to

- *sources of inspiration*
- *visual impact*
- *materials and/or techniques.*

What is your opinion on the style of this building? Give **two** justified reasons.

10

[Turn over

## SECTION 2 — DESIGN STUDIES (continued)

Image for Q11



*Engagement ring (17th century) by an unknown designer*

Materials: gold and enamel

11. Comment on this engagement ring design, referring to

- *materials and/or techniques*
- *decoration*
- *wearability.*

What is your opinion on the visual impact of this engagement ring? Give **two** justified reasons.

10



## SECTION 2 — DESIGN STUDIES (continued)

Image for Q12



*Matching dress, jacket and accessories (2010) by Holly Fulton*

12. Comment on this fashion design, referring to

- *sources of inspiration*
- *style*
- *visual impact.*

What is your opinion on who might wear this outfit and on what occasion? Give two justified reasons.

10

[END OF QUESTION PAPER]



[BLANK PAGE]

DO NOT WRITE ON THIS PAGE

[BLANK PAGE]

DO NOT WRITE ON THIS PAGE

## Acknowledgement of copyright

### Section 1

- Question 2 Painting, “Still Life with a Volume of Wither’s ‘Emblemes’” (1696) by Edward Collier, Tate Images (N05916). Reproduced by permission of Tate Images. © Tate, London 2019.
- Question 3 Painting, “The Painters Colquhoun & McBryde (The Two Roberts) by Ian Fleming is reproduced by kind permission of The Glasgow School of Art.  
**SQA has made every effort to trace the owners of copyright materials in this question paper, and seek permissions. We will be happy to incorporate any missing acknowledgements. Please contact [question.papers@sqa.org.uk](mailto:question.papers@sqa.org.uk).**
- Question 4 Painting, “The Cliffs at Étretat’ by Claude Monet. Public Domain.
- Question 5 Image by dbking of “The Three Graces” by Niki de Saint Phalle, is taken from (Top) Flickr.com. Reproduced under Creative Commons Attribution 2.0 Generic License.
- Question 5 Image of “The Three Graces” by Niki de Saint Phalle is taken from (Bottom) [www.WahooArt.com](http://www.WahooArt.com).  
**SQA has made every effort to trace the owners of copyright materials in this question paper, and seek permissions. We will be happy to incorporate any missing acknowledgements. Please contact [question.papers@sqa.org.uk](mailto:question.papers@sqa.org.uk).**
- Question 6 Painting, “Tulips and Irises” (1990) by Dame Elizabeth Blackadder. Reproduced by permission of Bridgeman Images.

### Section 2

- Question 8 Poster, “Chamonix Mont-Blanc” by Henry Reb. Credit: Private Collection Photo © Christies Images/Bridgeman Images.
- Question 9 Image, “Whistling Bird Kettle” by Michael Graves for Alessi.  
**SQA has made every effort to trace the owners of copyright materials in this question paper, and seek permissions. We will be happy to incorporate any missing acknowledgements. Please contact [question.papers@sqa.org.uk](mailto:question.papers@sqa.org.uk).**
- Question 10 Photograph, “Prince Felipe Science Museum, City of Arts and Sciences” by Herman (Top image) Elbertse.  
**SQA has made every effort to trace the owners of copyright materials in this question paper, and seek permissions. We will be happy to incorporate any missing acknowledgements. Please contact [question.papers@sqa.org.uk](mailto:question.papers@sqa.org.uk).**
- Question 10 Photograph, “City of Arts and Sciences, Valencia.” (Bottom left image)  
**SQA has made every effort to trace the owners of copyright materials in this question paper, and seek permissions. We will be happy to incorporate any missing acknowledgements. Please contact [question.papers@sqa.org.uk](mailto:question.papers@sqa.org.uk).**
- Question 10 Photograph of “Prince Felipe Science Museum” is taken from *Butterfly Engineering* (Bottom right image) by Daniyal Farhani, CRADINK.  
**SQA has made every effort to trace the owners of copyright materials in this question paper, and seek permissions. We will be happy to incorporate any missing acknowledgements. Please contact [question.papers@sqa.org.uk](mailto:question.papers@sqa.org.uk).**
- Question 11 Two images of “Jewish Betrothal Ring.” The Metropolitan Museum of Art, Gift of J. Pierpont Morgan, 1917 (17.190.996). New York, Metropolitan Museum of Art © 2019. Image Copyright The Metropolitan Museum of Art/Art Resource/Scala, Florence. © Photo SCALA, Florence.
- Question 12 Photograph of *Holly Fulton Spring Collection 2010* by Imaxtree.  
**SQA has made every effort to trace the owners of copyright materials in this question paper, and seek permissions. We will be happy to incorporate any missing acknowledgements. Please contact [question.papers@sqa.org.uk](mailto:question.papers@sqa.org.uk).**