



FOR OFFICIAL USE

--	--	--	--	--	--

National  
Qualifications  
2018

Mark

--

**X828/75/01****Fashion and Textile  
Technology**

MONDAY, 28 MAY

1:00 PM – 2:00 PM



\* X 8 2 8 7 5 0 1 \*

Fill in these boxes and read what is printed below.

Full name of centre

--

Town

--

Forename(s)

--

Surname

--

Number of seat

--

Date of birth

Day

--	--

Month

--	--

Year

--	--

Scottish candidate number

--	--	--	--	--	--	--	--	--

**Total marks — 30**

Attempt ALL questions.

Write your answers clearly in the spaces provided in this booklet. Additional space for answers is provided at the end of this booklet. If you use this space you must clearly identify the question number you are attempting.

Use **blue** or **black** ink.

Before leaving the examination room you must give this booklet to the Invigilator; if you do not, you may lose all the marks for this paper.



\* X 8 2 8 7 5 0 1 0 1 \*

Question 1

A teenager is going to buy the following hooded top to wear at a sports event.



- (a) Name **one** synthetic fibre that would be suitable for the hooded top.  
Give **two** reasons why the fibre is suitable.

3

Synthetic fibre \_\_\_\_\_

Reason 1 \_\_\_\_\_

\_\_\_\_\_

\_\_\_\_\_

\_\_\_\_\_

Reason 2 \_\_\_\_\_

\_\_\_\_\_

\_\_\_\_\_

\_\_\_\_\_

\_\_\_\_\_



\* X 8 2 8 7 5 0 1 0 2 \*

## Question 1 (continued)

- (b) The hooded top is made of a knitted fabric.

Evaluate the suitability of **three** key features of knitted fabrics.

3

Evaluative comments must include reference to the hooded top.

Evaluation 1 \_\_\_\_\_

\_\_\_\_\_

\_\_\_\_\_

\_\_\_\_\_

\_\_\_\_\_

Evaluation 2 \_\_\_\_\_

\_\_\_\_\_

\_\_\_\_\_

\_\_\_\_\_

\_\_\_\_\_

Evaluation 3 \_\_\_\_\_

\_\_\_\_\_

\_\_\_\_\_

\_\_\_\_\_

\_\_\_\_\_

[Turn over



\* X 8 2 8 7 5 0 1 0 3 \*

## Question 1 (continued)

- (c) Describe **two** advantages and **two** disadvantages of buying the hooded top online.

4

Advantage 1 \_\_\_\_\_

\_\_\_\_\_

\_\_\_\_\_

Advantage 2 \_\_\_\_\_

\_\_\_\_\_

\_\_\_\_\_

Disadvantage 1 \_\_\_\_\_

\_\_\_\_\_

\_\_\_\_\_

Disadvantage 2 \_\_\_\_\_

\_\_\_\_\_

\_\_\_\_\_



\* X 8 2 8 7 5 0 1 0 4 \*

**Question 2**

A Fashion and Textile pupil is using a commercial paper pattern to make a child's summer party dress.

- (a) The following information is given on the back of the commercial paper pattern envelope. Give **two** reasons why **each** point of information is important to the pupil.

4

**Fabric quantity chart**

Reason 1 \_\_\_\_\_

---

---

---

Reason 2 \_\_\_\_\_

---

---

---

**Back view**

Reason 1 \_\_\_\_\_

---

---

Reason 2 \_\_\_\_\_

---

---

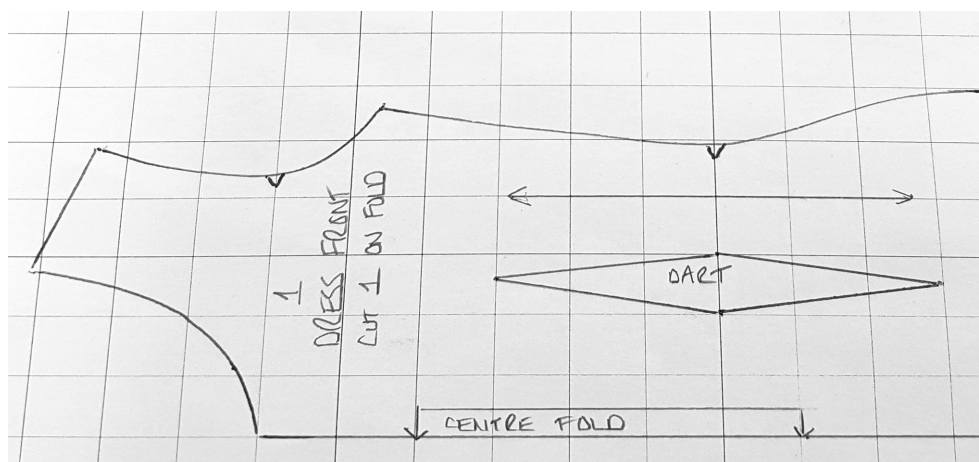
[Turn over]



\* X 8 2 8 7 5 0 1 0 5 \*

## Question 2 (continued)

- (b) The dress pattern has double pointed darts. A diagram showing the position of the darts is shown below.



Name **two** methods of transferring the pattern markings for the position of the double pointed darts from the paper pattern to the fabric.

2

Method 1 \_\_\_\_\_

\_\_\_\_\_

\_\_\_\_\_

Method 2 \_\_\_\_\_

\_\_\_\_\_

\_\_\_\_\_



## Question 2 (continued)

- (c) The pupil is using 100% cotton fabric to make the dress.  
Evaluate the suitability of **four** of the properties for this fabric.  
Evaluative comments must include reference to the dress.

4

Evaluation 1 \_\_\_\_\_

\_\_\_\_\_

\_\_\_\_\_

\_\_\_\_\_

\_\_\_\_\_

Evaluation 2 \_\_\_\_\_

\_\_\_\_\_

\_\_\_\_\_

\_\_\_\_\_

\_\_\_\_\_

Evaluation 3 \_\_\_\_\_

\_\_\_\_\_

\_\_\_\_\_

\_\_\_\_\_

\_\_\_\_\_

Evaluation 4 \_\_\_\_\_

\_\_\_\_\_

\_\_\_\_\_

\_\_\_\_\_

\_\_\_\_\_



\* X 8 2 8 7 5 0 1 0 7 \*

### Question 3

A fashion designer is creating a range of outfits for a celebrity performer to wear on stage. Some of the designs will be made into a collection that will be sold by a fashion retailer.

- (a) One of the designs to be included in the range is for a playsuit.

Consider each of the following aspects of design for the playsuit:

- style
- embellishment.

Describe **two** features of style and **one** feature of embellishment that could be included in the design of the playsuit.

Explain why **each** design feature you have described makes the item suitable for a celebrity to wear on stage.

6

#### Style

Description 1 \_\_\_\_\_

\_\_\_\_\_

Explanation 1 \_\_\_\_\_

\_\_\_\_\_

Description 2 \_\_\_\_\_

\_\_\_\_\_

Explanation 2 \_\_\_\_\_

\_\_\_\_\_



\* X 8 2 8 7 5 0 1 0 8 \*



## Question 3 (a) (continued)

Embellishment

Description \_\_\_\_\_

\_\_\_\_\_

\_\_\_\_\_

Explanation \_\_\_\_\_

\_\_\_\_\_

\_\_\_\_\_

[Turn over



\* X 8 2 8 7 5 0 1 0 9 \*

## Question 3 (continued)

- (b) Explain **four** factors that need to be considered by the designer when planning the collection to be sold by the retailer.

4

Factor 1 \_\_\_\_\_

\_\_\_\_\_

\_\_\_\_\_

Factor 2 \_\_\_\_\_

\_\_\_\_\_

\_\_\_\_\_

Factor 3 \_\_\_\_\_

\_\_\_\_\_

\_\_\_\_\_

Factor 4 \_\_\_\_\_

\_\_\_\_\_

\_\_\_\_\_

[END OF QUESTION PAPER]



\* X 8 2 8 7 5 0 1 1 0 \*

MARKS

DO NOT  
WRITE IN  
THIS  
MARGIN

ADDITIONAL SPACE FOR ANSWERS



\* X 8 2 8 7 5 0 1 1 1 \*

MARKS

DO NOT  
WRITE IN  
THIS  
MARGIN

ADDITIONAL SPACE FOR ANSWERS



\* X 8 2 8 7 5 0 1 1 2 \*