

FOR OFFICIAL USE



National
Qualifications
2023

Mark

X828/75/01

**Fashion and Textile
Technology**

FRIDAY, 19 MAY

1:30 PM – 2:30 PM



* X 8 2 8 7 5 0 1 *

Fill in these boxes and read what is printed below.

Full name of centre

Town

Forename(s)

Surname

Number of seat

Date of birth

Day

Month

Year

Scottish candidate number

Total marks — 30

Attempt ALL questions.

Write your answers clearly in the spaces provided in this booklet. Additional space for answers is provided at the end of this booklet. If you use this space you must clearly identify the question number you are attempting.

Use **blue** or **black** ink.

Before leaving the examination room you must give this booklet to the Invigilator; if you do not, you may lose all the marks for this paper.



* X 8 2 8 7 5 0 1 0 1 *

Total marks — 30
Attempt ALL questions

Question 1

A manufacturer is developing a range of maxi dresses. The style below is being considered.



- (a) Name **one** regenerated fibre that could be used to manufacture the maxi dress.

1

- (b) Describe **two** properties/characteristics of your chosen fibre which makes it suitable for the maxi dress.

2

Property/characteristic 1 _____

Property/characteristic 2 _____



* X 8 2 8 7 5 0 1 0 2 *

Question 1 (continued)

- (c) The manufacturer wishes to add elastane to the fabric.
Give **two** advantages/disadvantages of adding elastane.

2

Advantage/disadvantage 1 _____

Advantage/disadvantage 2 _____

- (d) Evaluate the suitability of using a knitted fabric for the maxi dress.

3

Evaluation 1 _____

Evaluation 2 _____

Evaluation 3 _____

[Turn over



Question 1 (continued)

(e) State two factors to consider when cutting out the knit fabric.

2

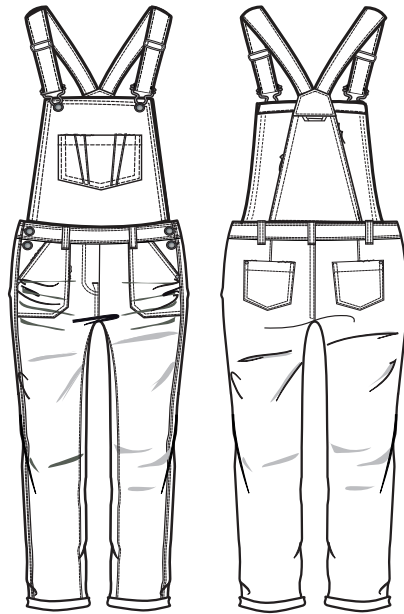
Factor 1 _____

Factor 2 _____



Question 2

A student is making a set of children's dungarees.



(a) Explain why the following features might be used on the dungarees.

4

A felled seam on the inside leg _____

Adjustable straps _____

A patch pocket on the front bib _____

Popper studs on the side waist opening _____

[Turn over



Question 2 (continued)

- (b) Explain **four** advantages/disadvantages of using 65% cotton/35% polyester fabric to make the children's dungarees.

4

Explanation 1 _____

Explanation 2 _____

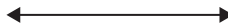
Explanation 3 _____

Explanation 4 _____

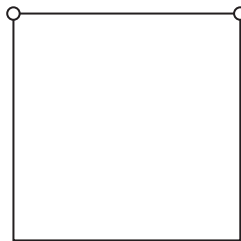
- (c) The student is using a paper pattern. They have found the following pattern markings.

Name the pattern markings shown.

2



1 _____



2 _____

Question 3

A designer is planning a summer collection based on clothing from the 1960's.

- (a) Identify **four** ways clothing from the 1960's could influence the collection. 4

1 _____

2 _____

3 _____

4 _____

[Turn over



Question 3 (continued)

- (b) The designer is considering selling the collection through an online auction site.

Evaluate the use of these sites to sell the collection.

3

Evaluation 1 _____

Evaluation 2 _____

Evaluation 3 _____



Question 3 (continued)

- (c) Explain **three** factors which the designer will need to consider if designing the collection for teenagers.

3

Factor 1 _____

Factor 2 _____

Factor 3 _____

[END OF QUESTION PAPER]



[BLANK PAGE]

DO NOT WRITE ON THIS PAGE

Acknowledgement of copyright

Question 1 matcatz/Shutterstock.com

Question 2 We Design Fashion/Shutterstock.com



* X 8 2 8 7 5 0 1 1 2 *