



National
Qualifications
2025

X828/76/11

**Fashion and Textile
Technology**

THURSDAY, 29 MAY

1:30 PM – 3:00 PM

Total marks — 45

SECTION 1 — 15 marks

Attempt ALL questions.

SECTION 2 — 30 marks

Attempt ALL questions.

Write your answers clearly in the answer booklet provided. In the answer booklet you must clearly identify the question number you are attempting.

Use **blue** or **black** ink.

Before leaving the examination room you must give your answer booklet to the Invigilator; if you do not, you may lose all the marks for this paper.



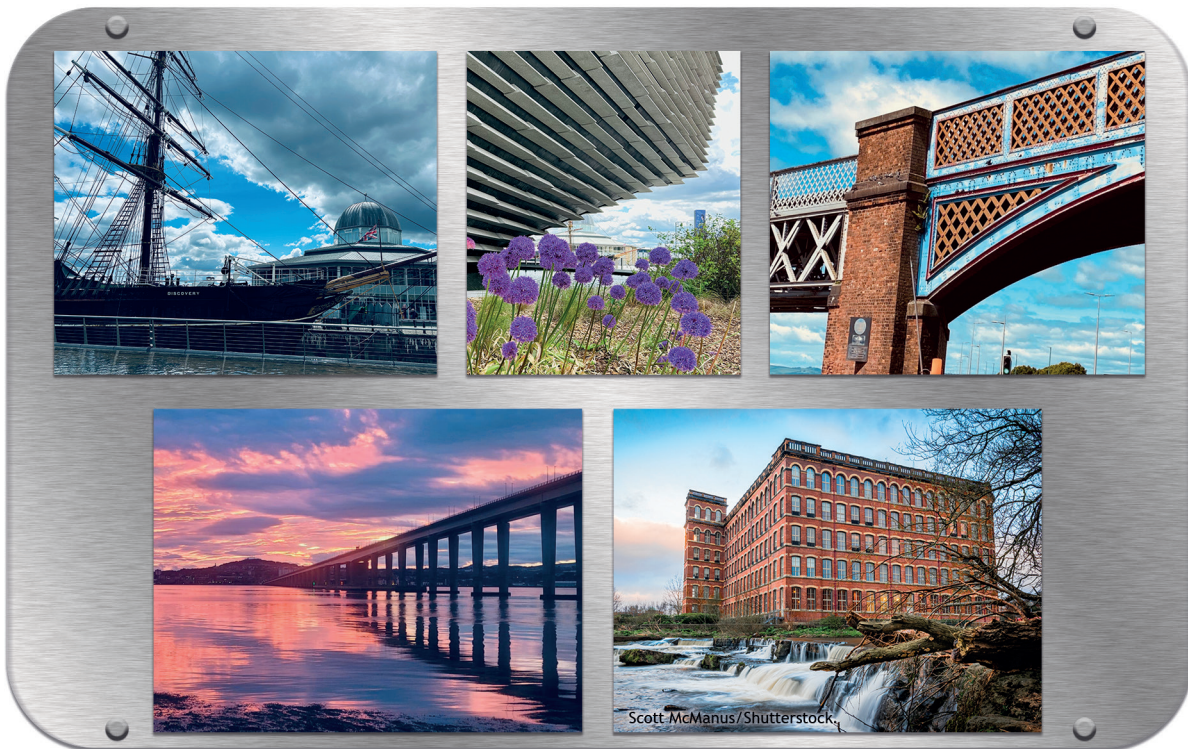
* X 8 2 8 7 6 1 1 *

SECTION 1 — 15 marks

Attempt ALL questions

Question 1

A fashion designer is creating a new Autumnal clothing collection using these images for inspiration.



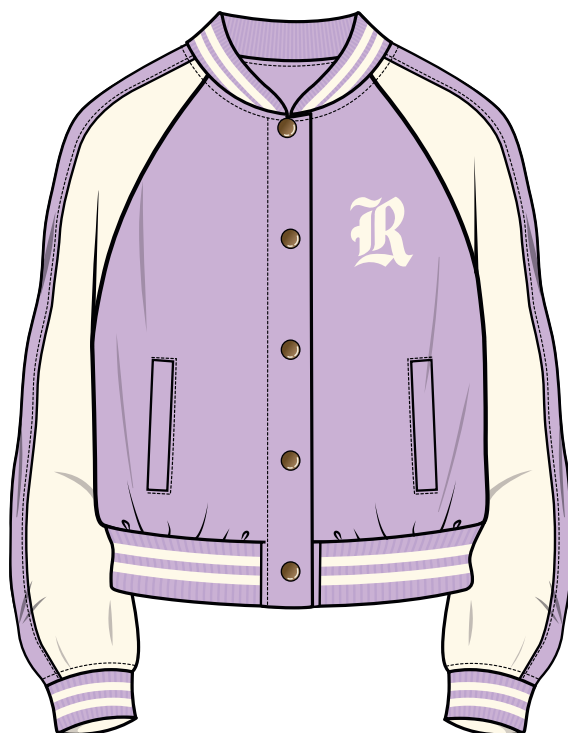
- (a) Identify **three** key features from the images. Discuss how **each** of these can inspire fashion items designed for this collection. 10
- (b) Evaluate the suitability of using mass production for the manufacture of the collection. 3
- (c) Explain the importance of the following **two** stages in the product development process when designing the collection: 2
- concept screening
 - prototype production.

SECTION 2 — 30 marks

Attempt ALL questions

Question 2

A cheerleading squad are looking to purchase a new team jacket. The following design is being considered.

**Fibre Content****Jacket Outer**

100% Wool

Jacket Lining

100% Polyester

Analyse the impact of the properties and characteristics of the textiles, and the construction techniques used in this jacket design.

Your analysis should include reference to:

- a minimum of **four** properties and characteristics of the textiles
- a minimum of **four** construction techniques used in the manufacture of the jacket.

10

[Turn over

Question 3

- (a) Identify **two** influences from past trends that may have inspired the party dress design below. Explain how **each** of the trends identified have been used in this design.

4



- (b) Explain how the designer could ensure they are considering the impact on the environment when producing the party dress.
- (c) Identify the importance of **each** of the following pieces of information found on a commercial pattern for the party dress:
- front and back view specification drawing
 - grainline
 - lay plan.

3

3

Question 4

- (a) A sportswear company is developing a new top for a female football team.
Identify **two** suitable surface decorations that could be used as a logo on the football top.
Explain why **each** chosen method would be suitable. 4
- (b) Explain why **each** of the following fabric finishes would be beneficial for the football top: 2
- stain resistance
 - anti-bacterial.
- (c) Identify and explain **two** principles of design that would need to be considered by the company when developing the football top. 4

[END OF QUESTION PAPER]

[BLANK PAGE]

DO NOT WRITE ON THIS PAGE

[BLANK PAGE]

DO NOT WRITE ON THIS PAGE

[BLANK PAGE]

DO NOT WRITE ON THIS PAGE

Acknowledgement of copyright

- | | |
|------------|---|
| Question 1 | (Bottom right image) Scott McManus/shutterstock.com |
| Question 2 | Just Dzine/shutterstock.com |
| Question 3 | Sergei Kolesnikov/shutterstock.com |