

Course Information

Cohort

Mark distributions

Grades

Components

Item Analysis

Estimates

Higher History

Awarding Data Pack

Course Information

Qualification Level: **Higher**

Qualification Code: **X910**

Qualification Title: **History**

Maximum mark: **110**

Title	2019	2022	2023	2024
British European and World History	44	44	44	44
Scottish History	36	36	36	36
Assignment	30	NA	NA	30
Total	110	80	80	110

In 2023 & 2022 the Assignment component was not assessed.

► Click to expand: Course External Assessment Dates

Cohort

Centres and Entries

- **Entries:** There are 10,006 entries in 2024, an increase of 34 (0.3%) on 2023.
- **Centres:** Entries come from 375 centres in 2024, a decrease of 4 (1.1%) on 2023.
- **New Centres:** There were 1 new centres in 2024 presenting a total of 1 entries (less than 0.05% of all entries).

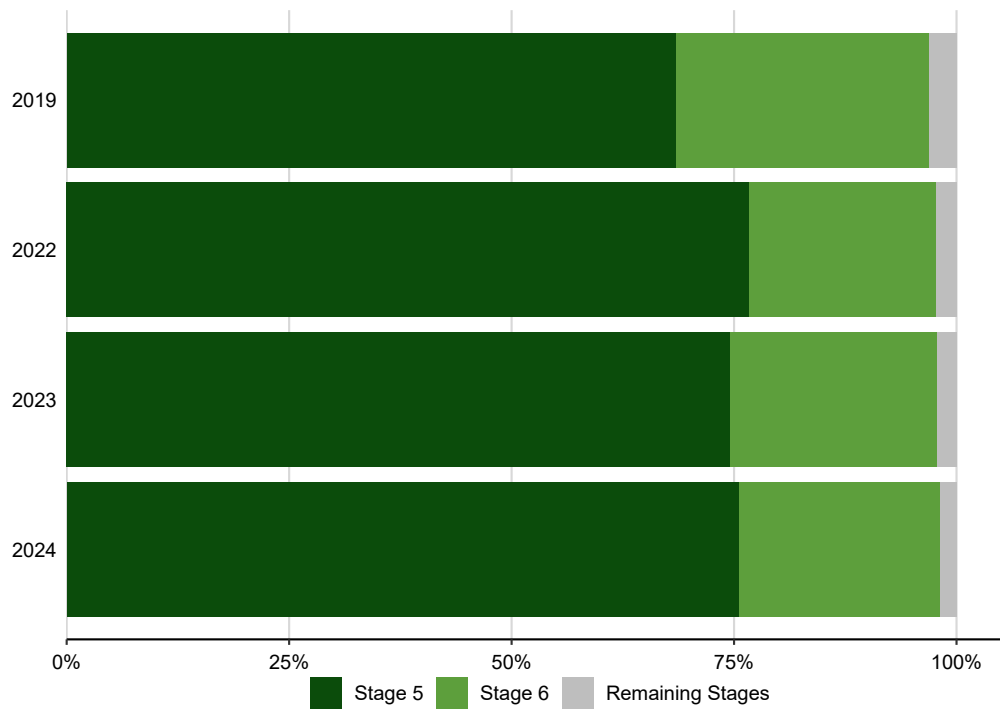
Entries	New Centres List	Returning Centres List
Year	Centres	Entries
2019	381	9,801
2022	376	9,626
2023	379	9,972
2024	375	10,006

Stage

The proportion of candidates in each stage is highlighted to allow any year on year shifts to be seen. The following table presents this information in more detail.

- Stages containing at least 10% of the total entries are shown.
- Stages with less than 10% of the total entries are grouped together as 'Remaining Stages'.

In 2024, the majority of entries are from candidates in Stage 5.



Year	Stage 1	Stage 2	Stage 3	Stage 4	Stage 5	Stage 6	FE College	Other
2019	0.0%	0.1%	0.1%	0.8%	68.5%	28.4%	0.9%	1.1%
2022	0.0%	0.1%	0.1%	0.4%	76.7%	21.0%	0.4%	1.3%
2023	0.0%	0.0%	0.1%	0.5%	74.6%	23.2%	0.3%	1.3%
2024	0.0%	0.0%	0.1%	0.3%	75.6%	22.5%	0.1%	1.2%

Prior Attainment

The following table provides information on where candidates have come from, and the average (mean) result they achieved. The proportion of those with no previous record are also noted.

Year	National 4	National 5	Mean Band	Higher	Mean Band	Advanced Higher	Mean Band	No Previous Record
2019	2.0%	74.8%	3.1	3.5%	7.1	0.0%	0.0	19.5%
2022	1.2%	82.0%	2.4	1.7%	7.0	0.0%	0.0	15.0%
2023	3.3%	77.2%	2.7	2.7%	7.1	0.0%	0.0	16.7%
2024	5.6%	76.5%	2.7	3.2%	7.0	0.0%	0.0	14.7%

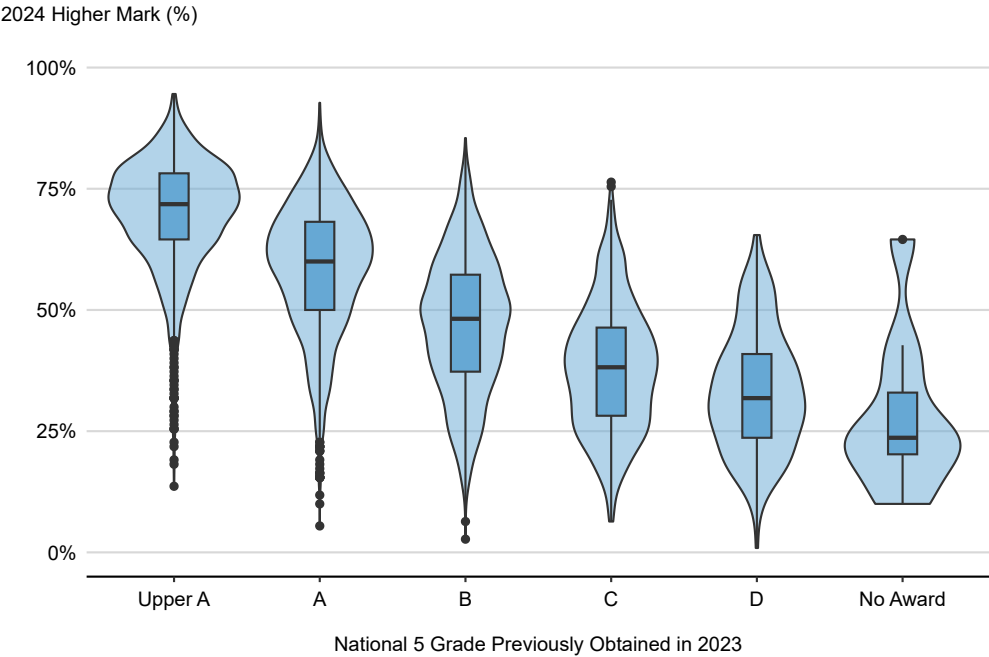
Progressing Candidates	Resit Candidates
------------------------	------------------

Of those candidates sitting 2024 Higher History, a progressing candidate is one who has previously attained National 5 History in 2023. Grade 2023 is correct as of December 2023 , which are post appeal results.

Grade 2023	Candidates
Upper A	1,575
A	2,845
B	1,915
C	931
D	189
No Award	10

For a quick overview on how to read boxplots, please jump to 'Components' section and open 'Click to expand: How to read boxplots'

Progressing Candidates: 2023 National 5 Grade by 2024 Higher Mark (%)



Mark distributions

This section is split into three parts:

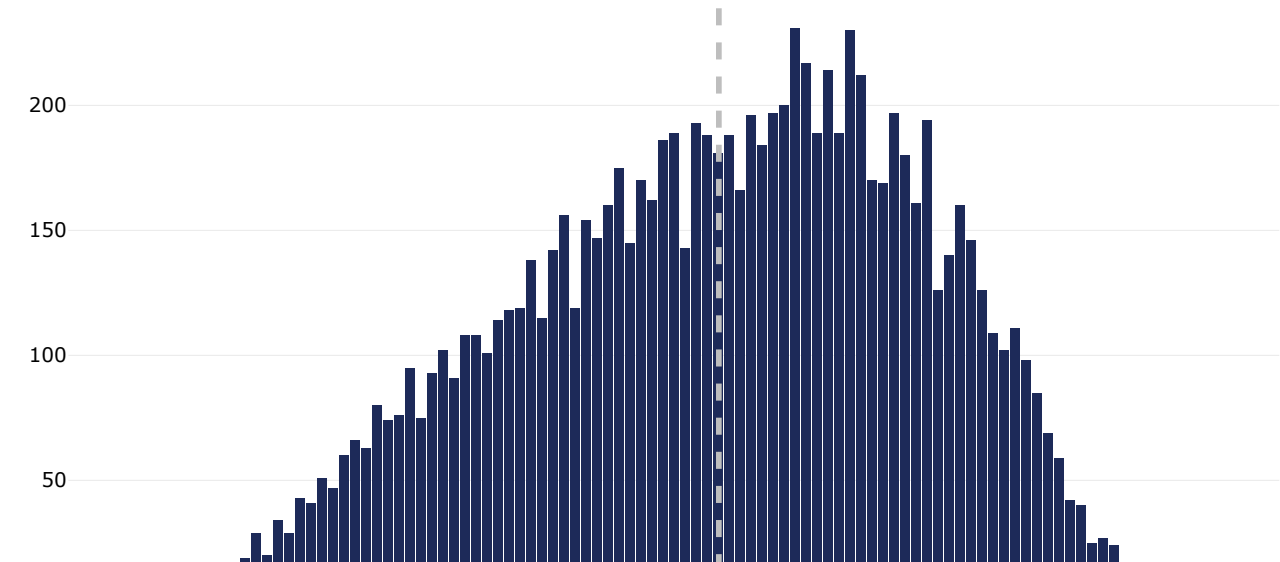
- Mark distribution of the current year.
- Historic mark distributions.
- 2024 mark distribution by cohort stage.

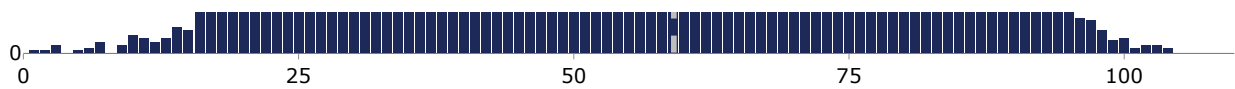
Focus on current year

The interactive chart below focuses on the current year. When hovering over a bar, the number of marks that bar represents is shown, along with the number of candidates achieving this mark (*Count*) as well as the cumulative candidate count and percentage for that mark (cumulative from the maximum mark to zero). This information is also available as a data table below, which can be filtered to show specific areas of interest. This table can be downloaded using the ‘Download XLSX’ button as an Excel workbook.

Using this interactive chart:

- To see the number of candidates attaining a mark as well as the cumulative counts and percentages, hover over the relevant bar.
- Dashed grey vertical line highlights the mean mark.
- To zoom in, hold the left mouse button and drag the cursor to draw a box around the section of the graph you want to zoom in on. Double click anywhere to zoom out again.
- Alternatively, use the table beneath the plot. When clicking the filter box in the ‘Mark’ column of the table, you can type a range (from highest to lowest separated by 3 dots) or use the slider input to set a mark range that you’re interested in.





Notional boundaries, Upper A, A and C, are noted in the far right column with relevant rows highlighted in blue.

When downloading the following table please do not save to a shared network drive. This document must be destroyed at the end of the awarding period.

Download XLSX

Mark	Count	Cumulative Count	Percent	Cumulative Percent	Notional Boundary
All	All	All	All	All	All
110	0	0	0.0%	0.0%	
109	0	0	0.0%	0.0%	
108	0	0	0.0%	0.0%	
107	0	0	0.0%	0.0%	
106	0	0	0.0%	0.0%	
105	0	0	0.0%	0.0%	
104	2	2	0.0%	0.0%	
103	3	5	0.0%	0.0%	
102	3	8	0.0%	0.1%	
101	2	10	0.0%	0.1%	

Show 10 entries

Previous 1 2 3 4 5 ... 12 Next

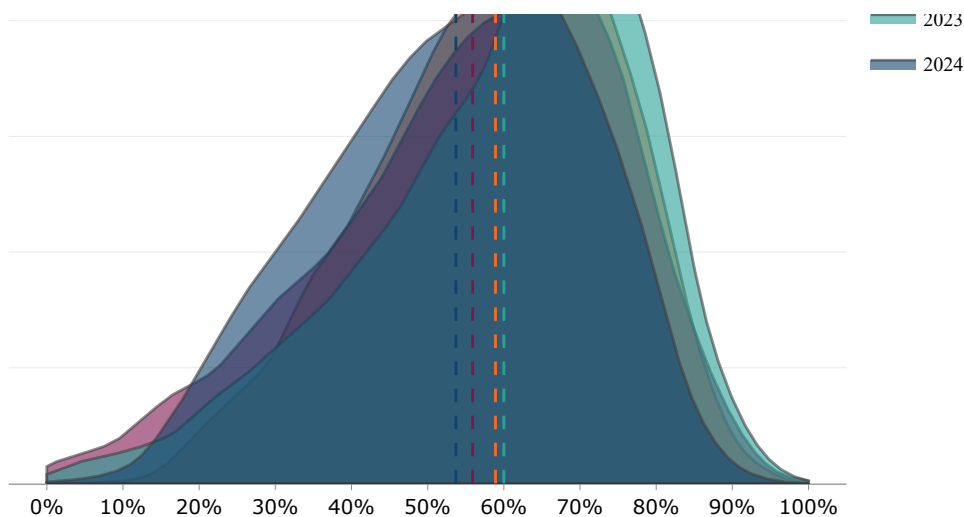
Comparison with previous years

- The mean mark (as a percentage of the maximum mark) was lower in 2024 than 2023.
- The spread (standard deviation) of candidates was lower in 2024 than 2023.

Percentage of Maximum Marks		Actual Marks				
Year	Entries	Maximum Mark	Mean Mark	Standard Deviation	30th Percentile	70th Percentile
2019	9,801	110	58.9%	15.7%	50.9%	69.1%
2022	9,626	80	55.9%	18.8%	47.5%	67.5%
2023	9,972	80	60.0%	17.9%	52.5%	71.3%
2024	10,006	110	53.7%	16.8%	44.5%	64.5%

- Hover over the density plot outlines to observe the year and the mean mark.
- The mean mark for each year is denoted by the vertical dashed lines and are colour coded to match that of the corresponding density plot.
- Years can be removed/added by clicking the year under the legend on the right hand side of this plot.

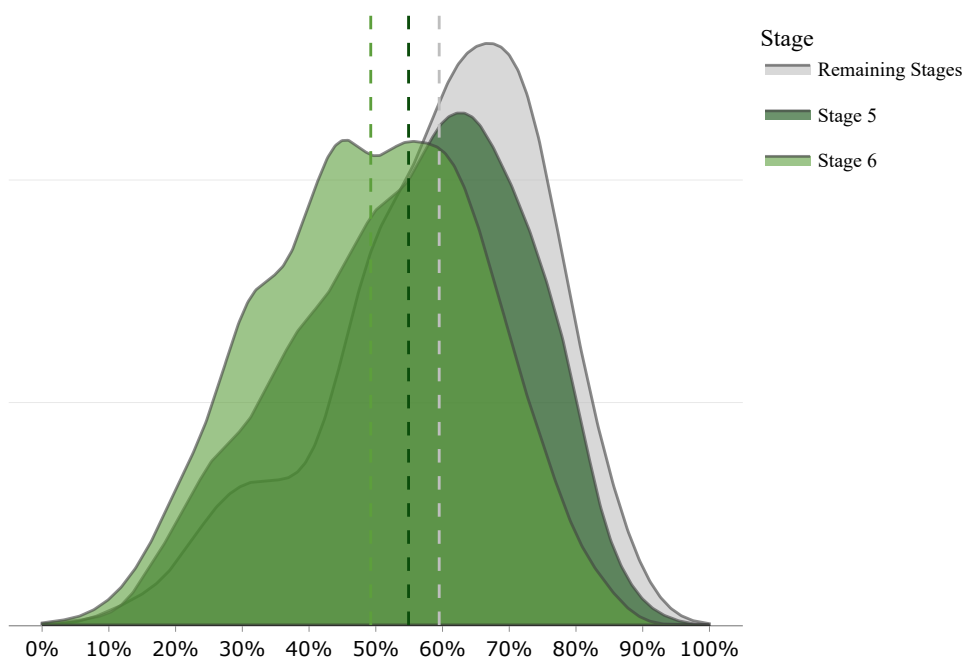




Comparison of cohort stage

The mark distribution of candidates (as a percentage for comparison through the years) is displayed as a function of their current stage.

- Stages containing at least 10% of the total entries are shown.
- Stages with less than 10% of the total entries are grouped together as 'Remaining Stages'.
- Hover over the density plot outlines to observe the year and the mean mark.
- The mean mark for each year is denoted by the vertical dashed lines and are colour coded to match that of the corresponding density plot.
- Years can be removed/added by clicking the year under the legend on the right hand side of this plot.



Grades

Grade boundaries and distributions for both historic and 2024 data.

Historic Grade Boundaries

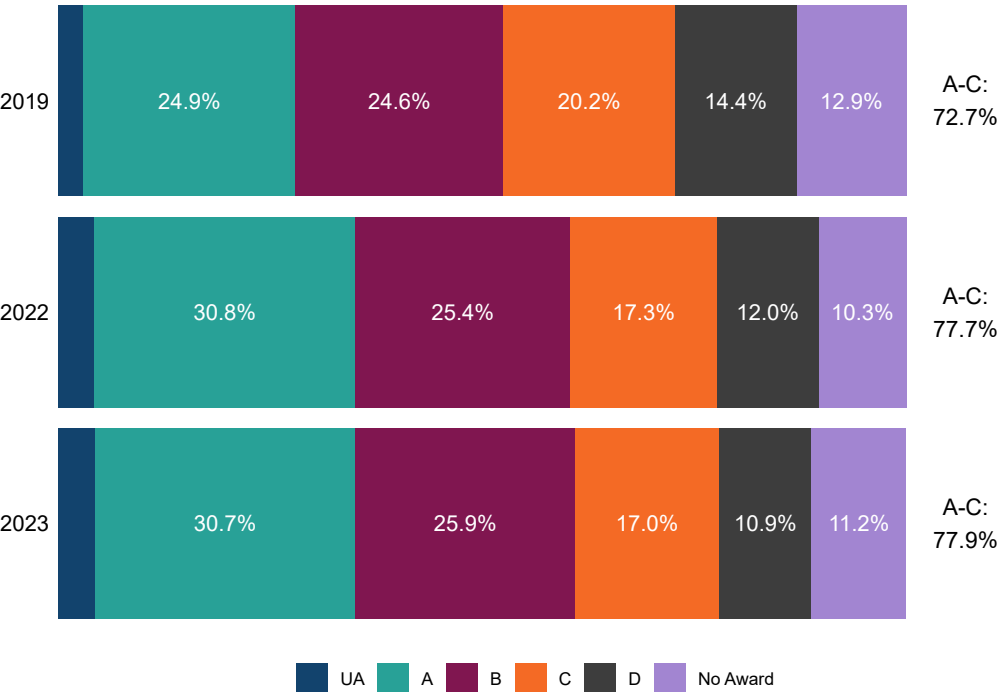
For reference, historic grade boundaries from 2019 to 2023 (excluding 2020 and 2021) as both actual marks and percentages.

Actual marks		Percentages				
Type	Max Mark	Upper A	A	B	C	D
2019 boundaries	110	93	77	66	55	44

Type	Max Mark	Upper A	A	B	C	D
2022 boundaries	80	67	53	43	34	24
2023 boundaries	80	68	56	47	38	29

Historic Grade Distributions

Grade distributions for 2019 to 2023 (excluding 2020 and 2021).



Year	Upper A	A	B	C	D	No Award	A-C
2019	3.0%	24.9%	24.6%	20.2%	14.4%	12.9%	72.7%
2022	4.2%	30.8%	25.4%	17.3%	12.0%	10.3%	77.7%
2023	4.3%	30.7%	25.9%	17.0%	10.9%	11.2%	77.9%

2024 Potential Grade Boundaries

Tables highlighting potential grade boundaries, as both actual marks and percentages.

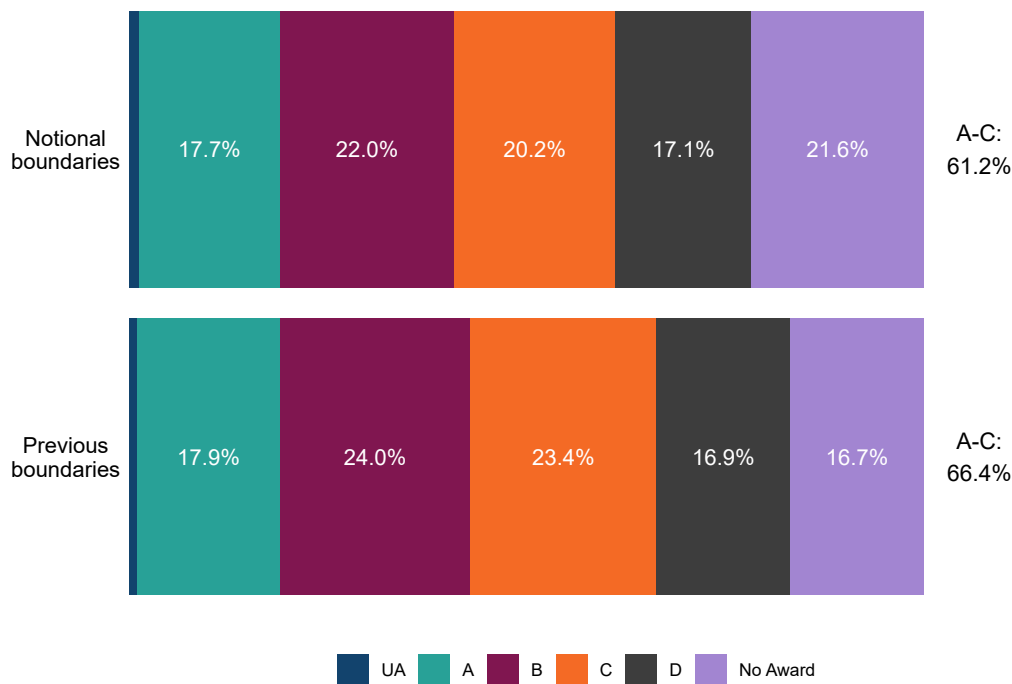
- *Notional - if notional boundaries are set.*
- *Previous exam year boundaries applied to this year (effectively exam unchanged) - applies 2023 boundaries to this year - resulting in movement in grade distribution.*
- *Previous exam year grade distribution applied to this year (effectively cohort unchanged) - applies 2023 grade distribution to this year - resulting in movement in grade boundaries.*

Actual marks		Percentages					
Type	Max Mark	Upper A	A	B	C	D	
Notional	110	93	77	66	55	44	
Previous exam year boundaries applied to this year (effectively exam unchanged)	110	94	77	65	52	40	
Previous exam year grade distribution applied to this year (effectively cohort unchanged)	110	87	68	56	44	32	

2024 Potential Grade Distributions

- *Notional boundaries - if notional boundaries are set.*

- Previous boundaries - applies 2023 boundaries to this year - resulting in movement in grade distribution.



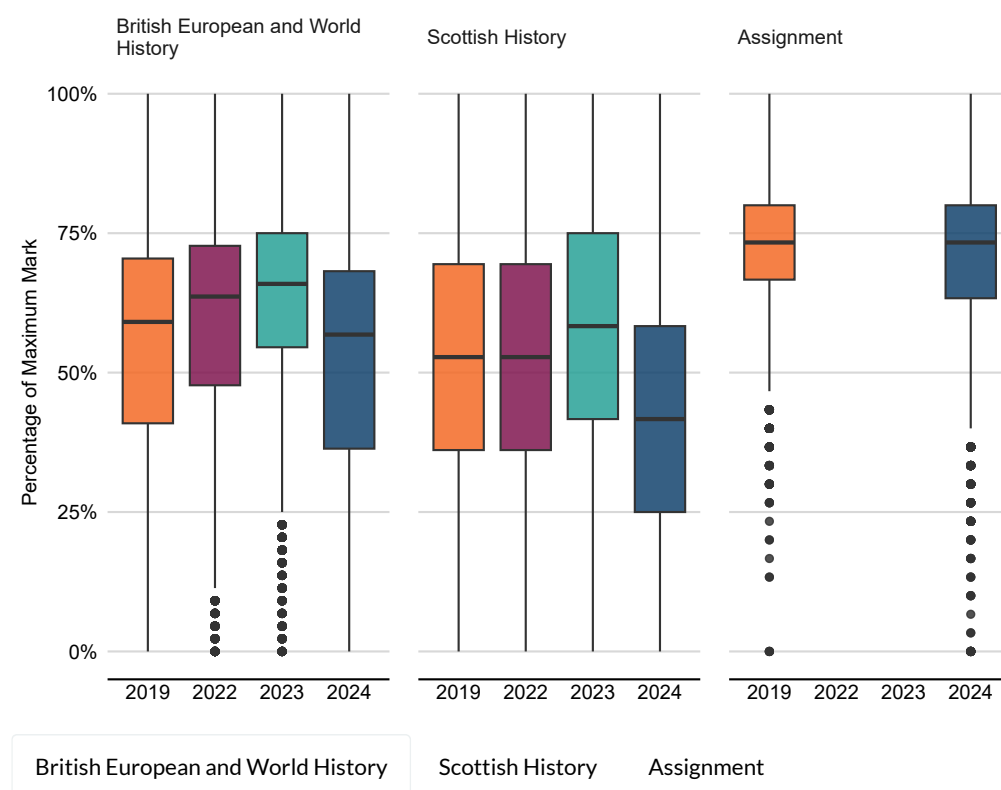
Year	Upper A	A	B	C	D	No Award	A-C
Notional boundaries	1.3%	17.7%	22.0%	20.2%	17.1%	21.6%	61.2%
Previous boundaries	1.1%	17.9%	24.0%	23.4%	16.9%	16.7%	66.4%

Components

For each component, the distribution of marks for each year is shown in 3 different formats:

- Boxplots (highlights marks as percentages).
- Table (marks and percentages).
- Density plots (drop-down menu to select either marks or percentages).

► Click to expand: How to interpret boxplots



- The mean mark (as a percentage of max mark) was lower in 2024 than in 2023.
- The spread (standard deviation) of candidates was higher in 2024 than in 2023.

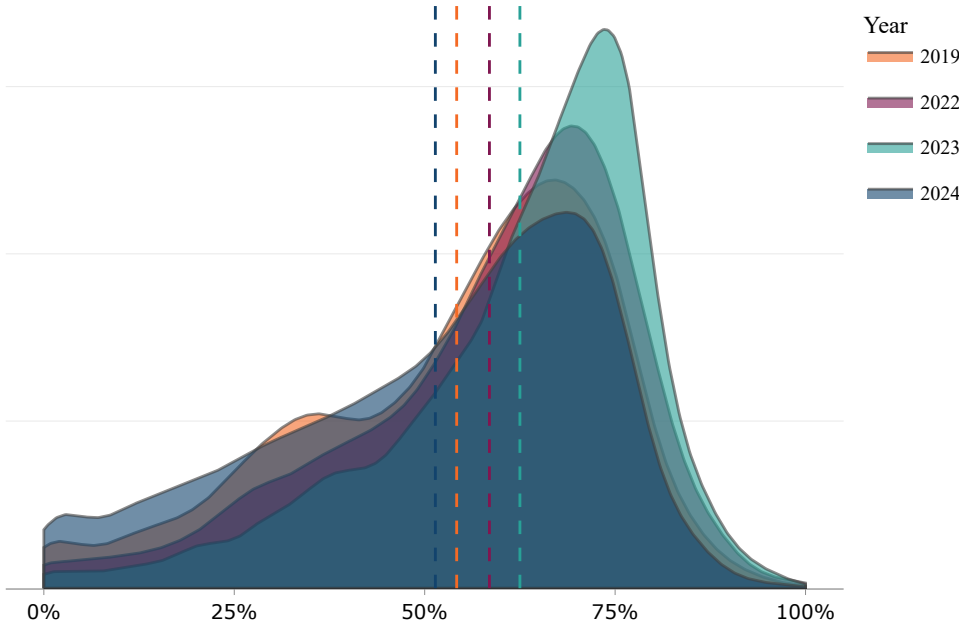
Year	Name	Maximum Mark	Mean Mark	Standard Deviation	Mean Mark (%)	Standard Deviation (%)
2019	British European and World History	44	23.8	8.8	54.2%	20.1%
2022	British European and World History	44	25.8	8.3	58.5%	18.8%
2023	British European and World History	44	27.5	7.6	62.5%	17.3%
2024	British European and World History	44	22.6	9.4	51.4%	21.3%

▼

Percentage of Maximum Marks

- Hover over the density plot outlines to observe the year and the mean mark.
- The mean mark for each year is denoted by the vertical dashed lines and are colour coded to match that of the corresponding density plot.
- Years can be removed/added by clicking the year under the legend on the right hand side of this plot.

British European and World History Mark Distribution (%)



Item Analysis

For each component, where available the item analysis is shown below (only components where item marks are captured electronically are presented here).

X837

X872

British European and World History

Scottish History

Assignment

Summary Table

Download XLSX



Item	Max Mark	Mean Mark	% Mean Mark	Discrimination	Learners Sampled	% Learners Sampled	Not Attempted	% Not Attempted			
				All			A	A			
Q1	22	1.8	8.1%	35	83	0.9%	59	71.1%			
Q2	22	12.8	58.0%	18	32	0.3%	0	0.0%			
Q3	22	10.5	47.5%	60	42	0.4%	0	0.0%			
Q4	22	NA					0				
Q5	22	NA					0				
Q6	22	3.0	13.6%		2	0.0%	0	0.0%			
Q7	22	3.7	16.9%	60	21	0.2%	0	0.0%			
Q8	22	4.5	20.5%	53	8	0.1%	0	0.0%			
Q9	22	7.7	34.9%	64	16	0.2%	0	0.0%			
Q10	22	8.4	38.4%	53	651	6.7%	0	0.0%			
Show 10 entries					Previous	1	2	3	4	5	Next

Column	Description
Item	Item Label
Max Mark	Maximum available mark for the item
Mean Mark	Mean mark per item as well as percentage of maximum mark
Discrimination	Correlation between scores on item and scores on the remainder of the test (Range -100 to 100)
Learners Sampled	Number and proportion of learners
Not Attempted	Number of learners that made no attempt to answer the item (Candidates that have not answered the required number of optional items, have had the remaining requirement marked as not attempted for the first available optional items(s))

Item Mark Frequency Table (%)

Download XLSX

Item	0	1	2	3	4	5	6	7	8	9	10	11	12	13	14	Distribution
Q1	86	0	0	0	0	0	1	0	1	2	0	1	1	1	1	
Q2	6	0	0	0	3	0	3	0	6	3	0	9	6	12	9	
Q3	2	0	2	2	5	5	7	2	7	10	10	7	5	7	5	
Q4	0	0	0	0	0	0	0	0	0	0	0	0	0	0	0	
Q5	0	0	0	0	0	0	0	0	0	0	0	0	0	0	0	
Q6	50	0	0	0	0	0	50	0	0	0	0	0	0	0	0	
Q7	29	10	19	10	5	10	0	0	0	0	0	10	0	10	0	
Q8	12	0	50	12	0	0	0	0	12	0	0	0	0	0	0	

Q9	31	0	6	6	0	0	0	0	0	6	0	12	6	6	12	
Q10	13	9	8	5	4	4	3	2	2	2	3	5	7	6	6	

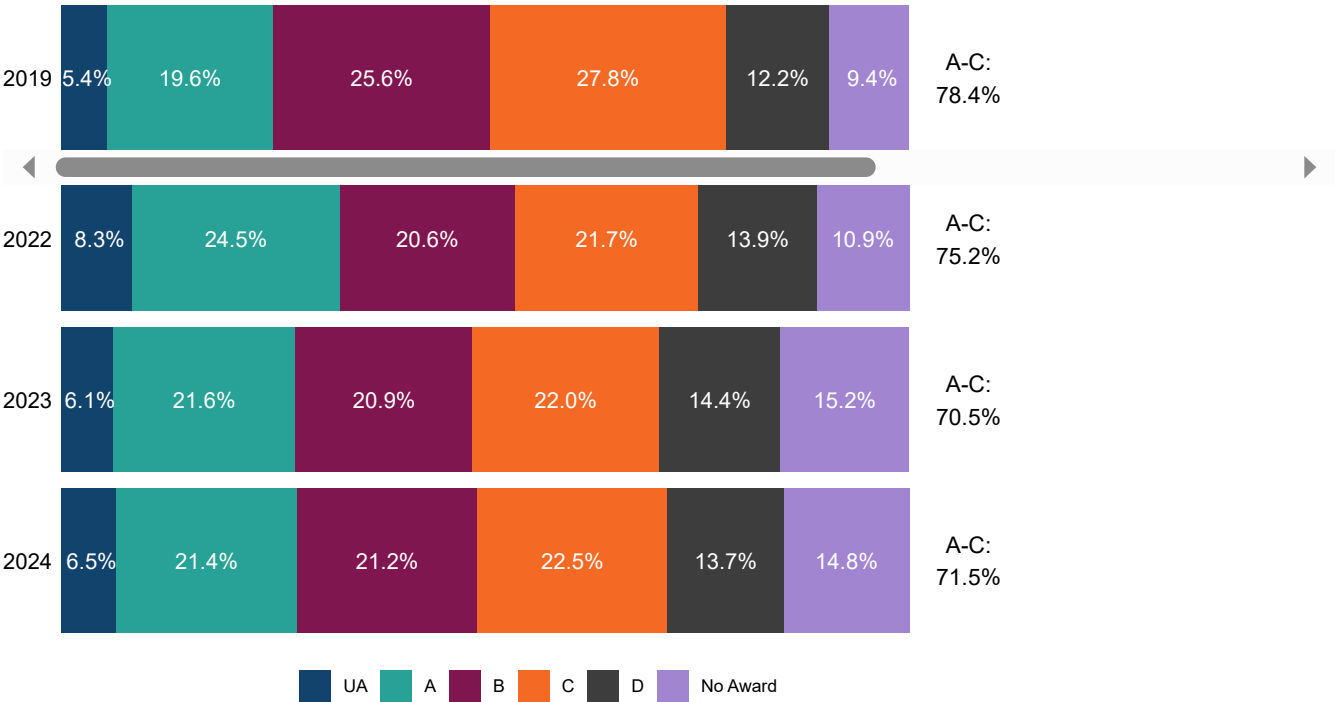
Show10▼entries

Previous12345Next

Sparklines at the far right of this frequency table show the mark distribution for each question as a bar chart. If downloading this data table, these sparklines will not be part of the output.

Estimates

The following bar chart and table displays grade estimates submitted by centres for each year.



Year	Upper A	A	B	C	D	No Award	A to C
2019	5.4%	19.6%	25.6%	27.8%	12.2%	9.4%	78.4%
2022	8.3%	24.5%	20.6%	21.7%	13.9%	10.9%	75.2%
2023	6.1%	21.6%	20.9%	22.0%	14.4%	15.2%	70.5%
2024	6.5%	21.4%	21.2%	22.5%	13.7%	14.8%	71.5%